

**BETA SIGMA PHI
CELEBRATES 48th ANNIVERSARY**

Beta Sigma Phi, a social, cultural and service organization for women, plans the celebration of the 48th anniversary of its founding.

Beta Sigma Phi is the largest women's sorority in the world. Celebrations will take place in the 30 countries in which the organization's 250,000 members in over 12,000 chapters exist. The organization is non-academic, non-political and non-sectarian. The keynote to Beta Sigma Phi is friendship.

Chapters of five different degrees meet the growing needs of various age groups. Members are active in small chapter groups. Each chapter adapts the plans for social, civic, and service and cultural activities to fit the interests of its members.

When Beta Sigma Phi events or civic endeavors are larger than one chapter can plan alone, all chapters in a city or area may combine their strength. There are state conventions each year which any member may attend.

Internationally, the chapters have created several special funds: The International Loan Fund, through which members help one another; The International Endowment Fund, which has donated over one million dollars to cancer research, cystic fibrosis, homes for under-privileged children, and many other causes: The Exemplar Fund, which helps to support Literacy Village in India; and a college scholarship fund for members or their sons or daughters.

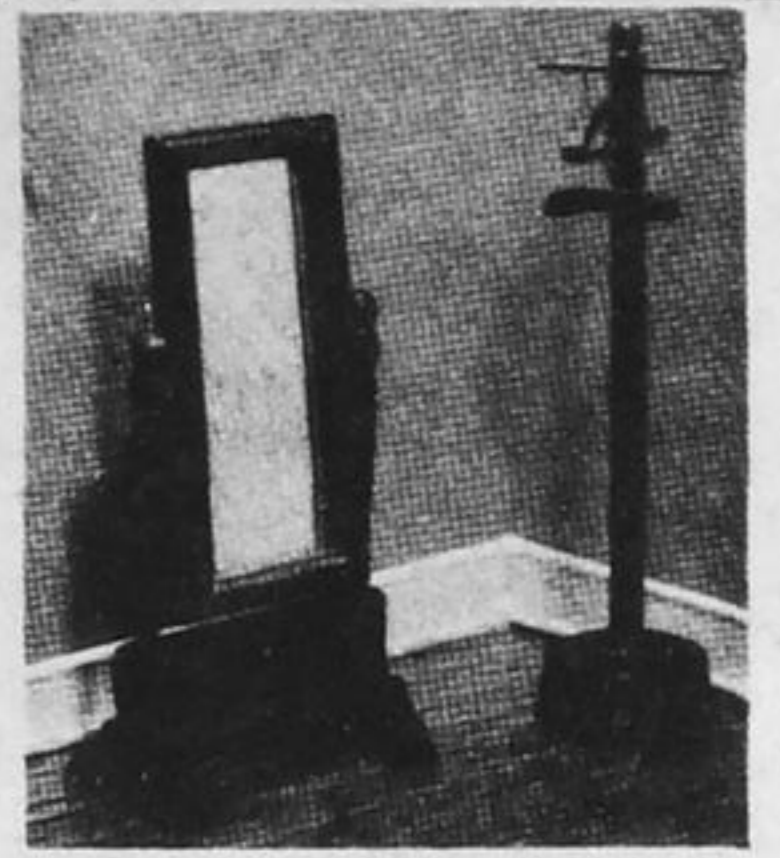
PRESENTED WITH PRIDE BY

Whitneys General Store

MORTON

**THE
CONCORD[®]
COLLECTION**

popular priced one inch to one foot reproductions
for the Serious Collector, and the Dollhouse Enthusiast.



STANDING MIRROR/COAT TREE
Perfectly detailed from the tilting glass mirror to the miniature coat hangers on the coat tree. Each piece Individ. Boxed.
#1853 Standing Mirror - 4 1/2" high.
#2175 Coat Tree - 5 1/2" high.

Outstanding projects and activities of the local chapter are: Dental work for a needy child, financial aid to fire victims, sending a student to government seminar, financial assistance to area students year end trips. We also are co-sponsors, with Rideau Civinettes, Rideau Medical Centre and the Cancer Society, of a Breast Self-Examination Clinic. Our Annual Fashion Show in the Spring has been very well attended each year. In the fall we usually hold a garage sale at Pedherney's and provide a delicious lunch for the Rideau Crafts Market at Christmas time. The Founder's Day celebration

on Wednesday April 25 at Kemptville marks the 48th anniversary of the Founding. The organization was founded in Abilene, Kansas, by Mr. Walter W. Ross. The anniversary will be observed by the chapter here in Westport-Portland-Elgin and by all other chapters around the world.

DID YOU KNOW...

The Trans-Canada Highway is the longest paved road in the world. When it was officially opened in 1962, it measured nearly 7,700 km, from St. John's Newfoundland to Victoria, B.C..

**Frank Chinnery's
GREENHOUSES**

Est. 1962 Lyndhurst 928-2410

**10,000 Boxes of Spring
Bedding Flowers & Vegetables**

Beautiful Hanging Baskets

Pick out your Mother's Day plant now.



Custom Made Redwood Planters

Open 7 days a week 8 AM - 8 P.M.