

ON
POINT

Continued from Page 4.

but they did not replace horses, because they were of no use in the winter. Horses and cutters with sleigh bells were the only means of winter transportation until the 1930's when trucks with snow plows came on the scene.

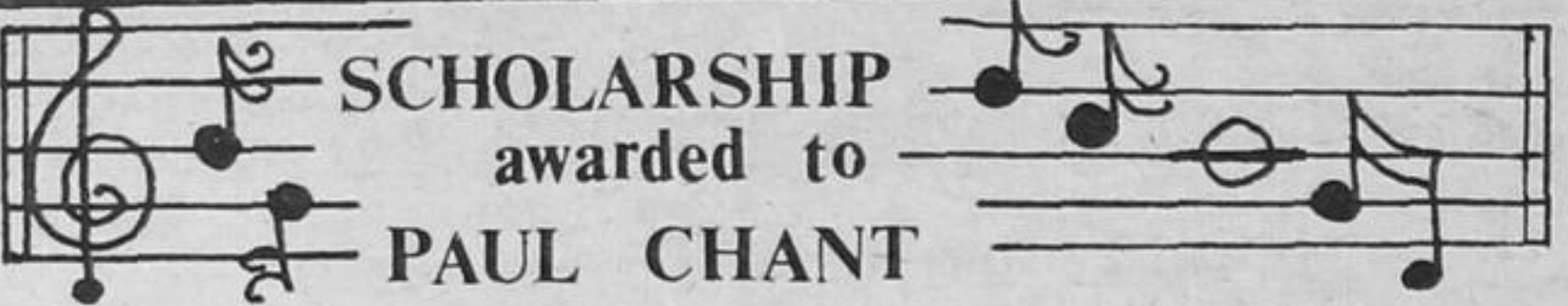
Beginning in the 1940's the Cow and Gate dairy plant in Gananoque began buying milk in the hinterland, which was picked up by truck. Farmers who became patrons of this factory were offered a year-round income for the first time. By 1951 the local cheese factory was no longer a viable business and it was closed. By the terms of the property lease from the O'Connor family, the factory had to be removed within a year of its ceasing operation. That landmark disappeared in 1952.

Hydro lines came to Long Point in 1949. Radio and television made the concerns of Long Point the concerns of the world.

In 1960, Rideau District High School in Elgin opened and the high school students from Long Point, who had attended Lyndhurst Continuation School since 1937, were taken by bus to Elgin. S. S. #5, Long Point was closed and the public school students were taken by bus to Lyndhurst.

In 1959 construction began on the new county road. The iron bridge at Black Rapids was demolished in 1960 and replaced by a concrete arch. Black Rapids Hill was straightened out and cut down and the hill on the east side of the river, which had dictated the course of the road for 140 years, was removed in a few weeks.

Now traffic crosses Long Point in about 3 minutes, and I am sure many drivers don't even realize they have crossed a bridge in the process. Within the memory of the author, walking to Long Point school in the morning, there were milk cans on milk stands at every driveway along the road, and Shel Hollister's familiar milk truck offered a welcome warm ride. Now a bulk truck picks up milk from the 2 remaining farms and I think if I tried to flag him down for a ride, he'd be half way to Lyndhurst before he could stop.



Paul Chant of Delta has been informed that he is a winner of a George N. Maybee Memorial Scholarship.

The Scholarship has been established by friends and admirers of George N. Maybee, D.Litt., F.R.S.C.M., late distinguished teacher, organist and Master of Choristers at St. George's Cathedral, who made an outstanding contribution to the religious and musical life of Kingston over many years. His church choirs in particular gained a world-wide reputation.

Paul is enrolled in B.Mus. course at Queen's University and is organist and choir master of Wall St. United Church.

BASTARD AND BURGESS (S)

PORTLAND DAY CAMP '80

Length of Program	-	June 23rd. to July 18th.
Registration Time	-	Monday, June 23rd. at 11:00 - 2:00
Registration Place	-	Portland Community Hall
Hours Per Day	-	9:00 a.m. to 4:00 p.m.

The program will consist of various sporting activities, as well as arts and crafts. Several events will be scheduled such as baseball games, low organized games, hikes, treasure hunts, scavenger hunts and special events like track and field meets.

Children should bring a lunch or some money to buy something to eat at a nearby snack bar. They may also bring their swimming suits for a supervised swim period.

We would like to have a safe and enjoyable summer for all.

DELTA DAY CAMP '80

Length of Program	-	July 21st. to August 22nd.
Registration Time	-	Monday, July 21st. at 11:00 - 2:00
Registration Place	-	Day Camp Centre in Park
Hours Per Day	-	9:00 a.m. to 4:00 p.m.

The program will consist of the above-mentioned activities, as well as the use of the Beverley Elementary School gym. The approach may differ slightly according to the needs of the area, the children and the enthusiasm of the staff involved. Floats may be entered by each Day Camp in the DELTA FAIR PARADE.

Further information may be passed along at a future date.

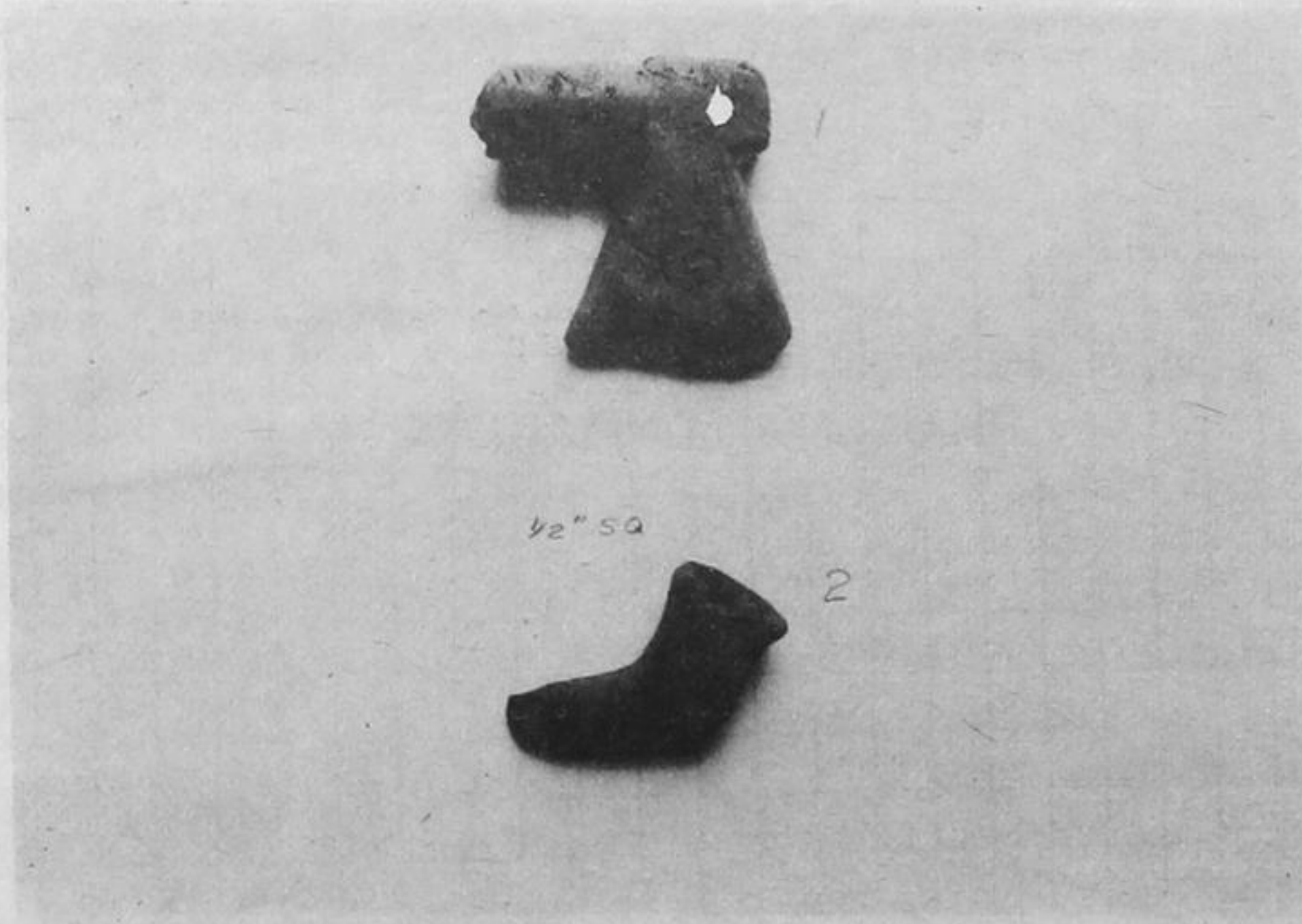


Photo 1 (from June article)

Finely carved soapstone hatchet and roughly fashioned clay pipe found at Rice's Narrows by Clark Tye.

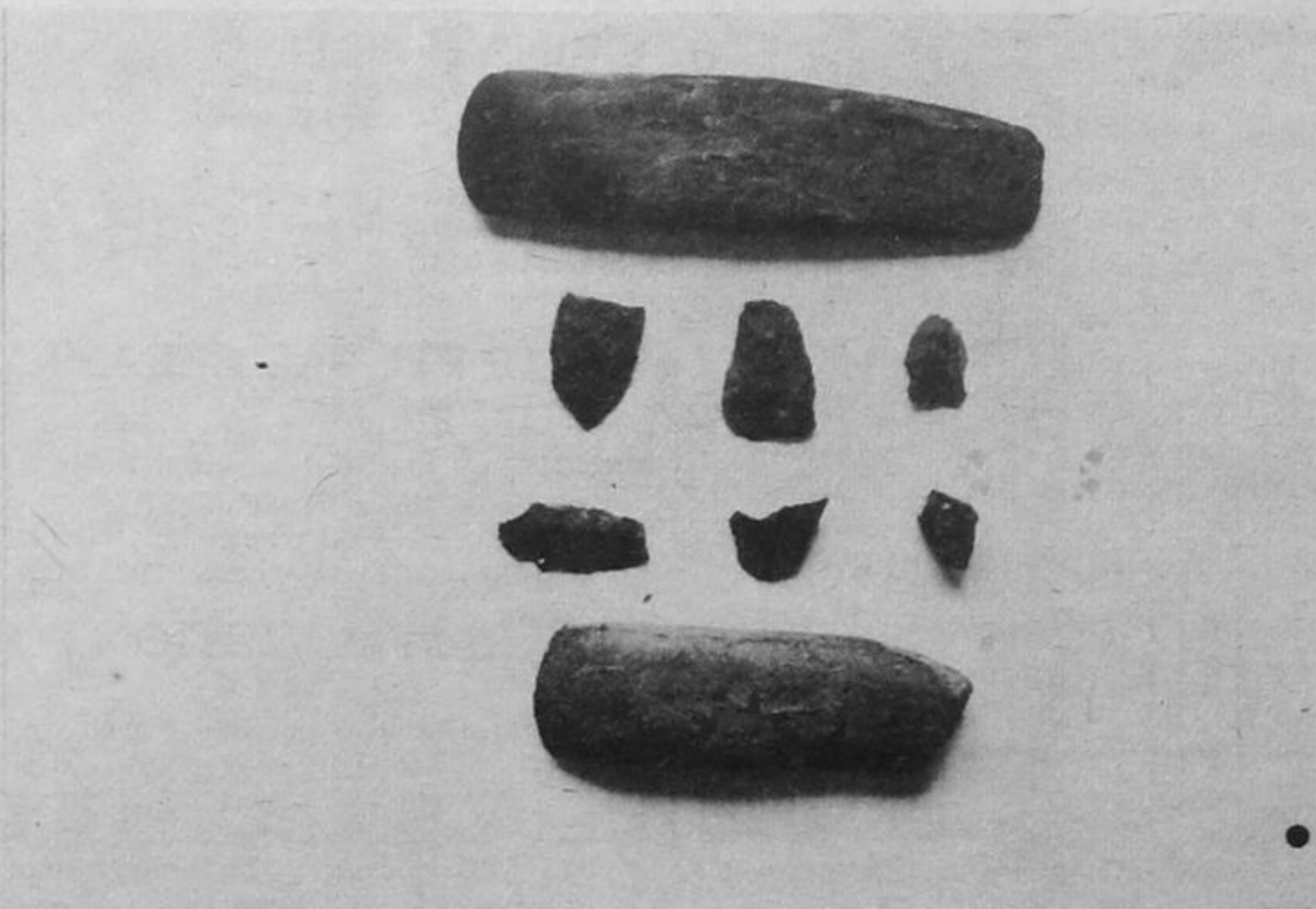


Photo 2 (refer to June article)

These items were discovered by Elmer J. Bryan while ploughing his farm on Long Point. Items 5 and 6 are chunks of unfashioned obsidian which could only be obtained by trade with other Indian tribes.