

Following this discouraging report, the interior of Leeds County was disregarded as an area in which to settle Loyalists, and only the first few concessions along the river, which had been surveyed in 1781 and 82, were open.

The concession lines in the rear of the township were marked by Lewis Grant and his party in 1796. In the area of Long Point, the survey consisted of running the line for the front of the seventh concession and the front of the ninth concession, and marking, with a steel pin, the corners of each lot on the concession line. After that date, the area was open to settlement and a prospective settler was required to lay out his own boundaries by measurement. A more detailed survey must have been done at a later date, but there

seems to be no record of it.

Unlike the days of the U.E. Loyalists, when properties were assigned by drawing numbers from a hat, it was customary by 1800 for a prospective settler to travel about and choose a piece of land and then apply for the grant of it. Most of the settlers in those days were officers and soldiers of the British Army, many of whom had fought in the revolutionary war. As they left the military, they were given land according to their rank. Gersham French took up 5 lots, or 1000 acres, in the Rear of Yonge Twp. between Athens and Charleston Lake in 1806.

The first land to be taken up in the Long Point area was in 1814 when Charles Langlade received the grant of lots 9 and 10 in the 8th concession. These lots are not farm land or shoreline and it seems odd in retrospect that he should choose this location unless he picked it out on a map rather than on the site.

In 1816, John and Hannah Anderson claimed the parts of lots 6, 7 and 8 in the 8th that lie south of the river. This parcel included the river front from Shawmere to Glen Bean's and it is possible that Anderson had designs on the water power at Black Rapids, which was in the middle of this tract. The land registry shows that the Andersons remained until 1854, when they sold the last of their holdings to William Plunket. They may have resided elsewhere, however, because the name is not recognized by any of the present natives of the area.

The settlers who stayed and built the community of Long Point, began to arrive from Ireland in 1828.

\*\*\*\* To be continued \*\*\*\*

SORRY

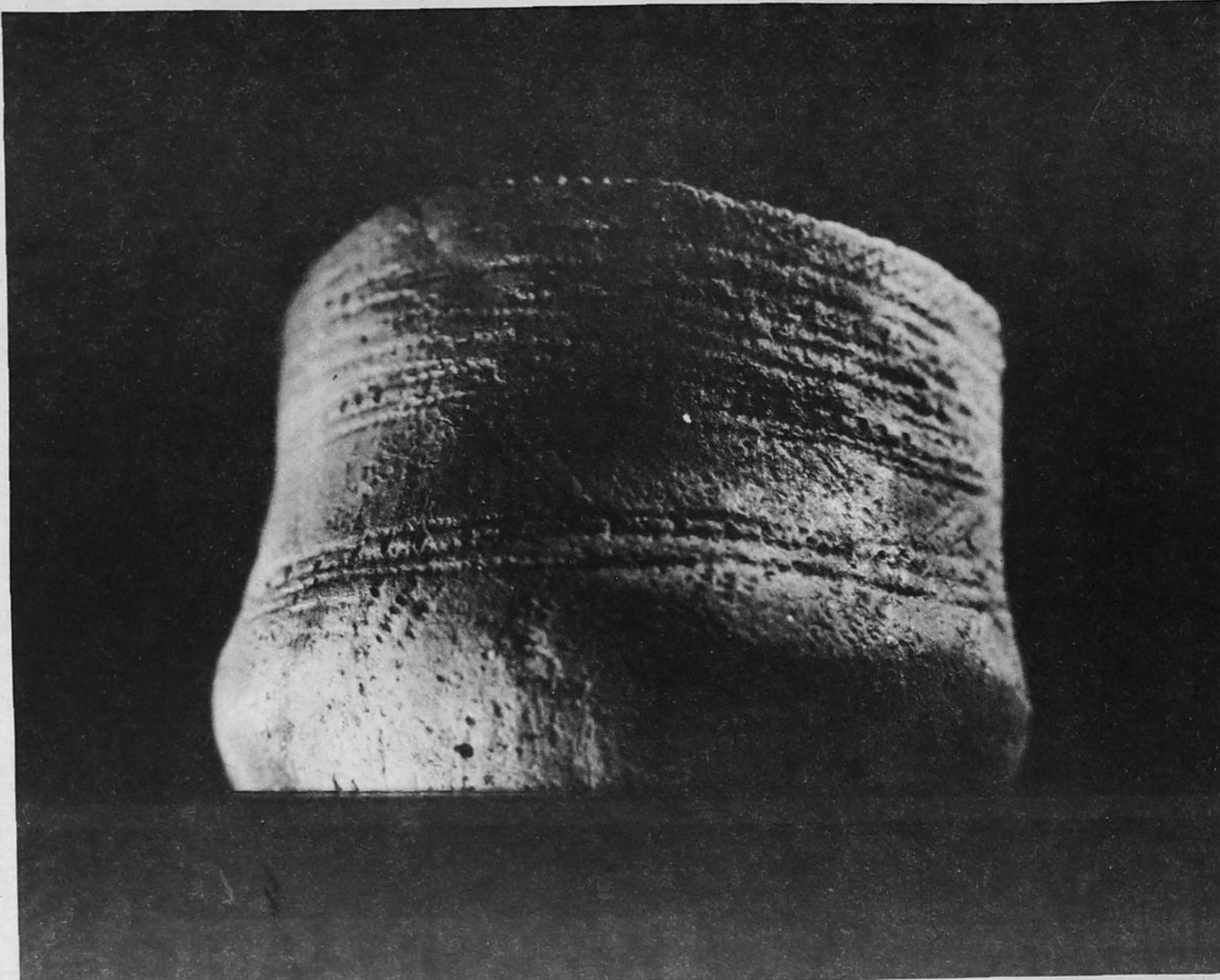
Photos #1 and #2 will be available in next month's paper.

?? Appliance Problems ??

Repairs available to all makes and models  
Refrigerators, Stoves,  
Freezers, Washers, Dryers,  
and Air Conditioners

\* Fast Efficient Service \*

**Seward Refrigeration**  
272 - 2767



This pottery bowl of native origin, was found by archeologists diving in Charleston Lake at the eastern terminus of the portage from Red Horse Lake.

**DEWELL'S GENERAL STORE**  
CHANTRY 928-2710

on County Rd. #8 between Toledo & Phillipsville

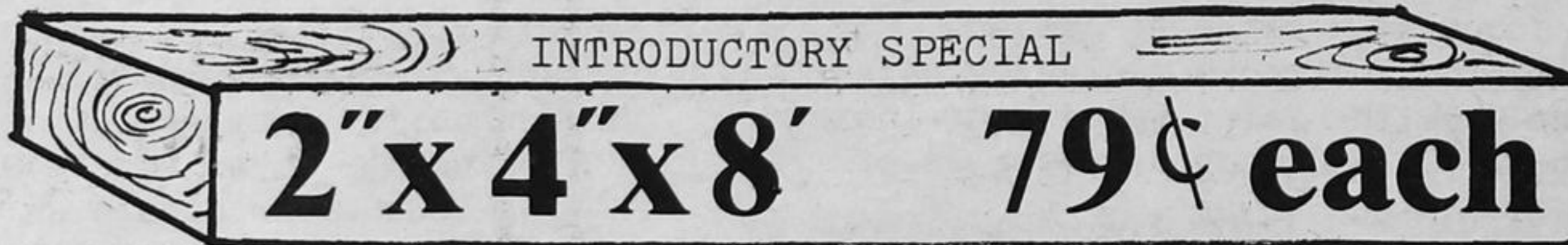
"EVERYTHING FROM NUTS TO BOLTS"

We have added something New



**CASH & CARRY**

**LUMBER**



Economies

We are also carrying cement, roofing shingles, 1"x 2"x 8', 1"x 3"x 8', 2"x 6"x 8', plywood, aspenite, insulation (styrofoam & fiberglass), galvanized roofing, cement blocks, foundation coating, black joe, paint, electrical supplies, bolts, and hand tools. Other items available on 24 to 48 hour delivery include paneling, carpeting, and cushion flooring. Check our prices today.

"The place to shop with just one stop!"