

FASHION REVIEW

SWING INTO SPRING

Women from throughout North Leeds flocked to Rideau District High School last month to learn what's new in fashion this year. "Swing into Spring" was this year's showing of over 100 spring and summer fashions sponsored by the Eta Tau Chapter of Beta Sigma Phi Sorority. All fashions were from Wright's of Gananoque and Dorie's Den of Westport.

Fashions tend to the cool and comfortable this year. Many outfits were suitable for casual or festive wear.

A variety of skirts were shown, with the popular tiered skirt in vogue. The walking slash or pleat is also back in fashion.

Delicate print fabrics are touched with open work or eyelet for a truly feminine look. The drawstring waistline

is the height of fashion this year—adorning many dresses and tops.

The dominant colour for summer wear this year is cream. Red, white and blue are also popular for sporty wear. At-home casuals were shown in rich shades of velour.

Easy care washable fabrics are the rule for summer wear. Most outfits were in the \$25-45 price range.

For the very young, a delightful series of little girl's dress outfits were shown. These are handcrafted by Dorie and retail for only \$15.

"Swing into Spring" is one of Beta Sigma Phi's fund raising events. This year money is being raised to sponsor the work of a Homemaker in North Leeds. Two Homemakers are presently working under a Canada Works grant which expires in August. The Sorority has taken on the task of seeking continued funding for this valuable service.

**PAINTING
& REDECORATING**

PAINTING DONE REASONABLY
INTERIOR & EXTERIOR
WALLPAPERING

Free Estimates

PLEASE CONTACT NICK

272-2704

THE STORY OF OUR LIBRARIES

by June Greenhorn

The Eastern Ontario Library System became involved in a project to establish a County Library in Leeds and Grenville in 1970. Demonstration libraries were placed on a rotating basis for three month periods. The first was located in Elgin, South Crosby Township. This unit flourished. South Crosby Council passed the necessary by-law and the unit was established as a permanent library.

A bookmobile was supplied by the Eastern Ontario Library System in conjunction with Brockville Public Library Board in 1972, taking library service to 28 communities. This service was disbanded in Dec., 1974.

In the meantime, a citizen's committee headed by Mrs. Mary Warren addressed all the Councils in Leeds and Grenville to arouse interest in County Library. In order to form a County Library Board at least one half of the municipalities, having a combined population of 25,000, must request it. Due to lack of support from several Townships, the motion to form a County Library was defeated in 1974.

Three adjoining townships and a separated village wished to continue library service. Union Library was the most viable alternative. In February 1975, representatives from South Crosby, Rear of Leeds and Lansdowne, Bastard and S. Burgess Townships and the separated Village of Newboro met to explore the possibility of Union Library. On March 12, 1975, the Union Library was formed and a Board appointed with Mrs. Warren serving as the first Chairman.

After countless hours of work by innumerable volunteers, Rideau Lakes Union Library became a reality in June 1975. Branches were opened in Delta, Lyndhurst, Newboro, Portland and Seeleys Bay. Elgin Library, having been open for several years, became the central unit, housing the Union shelf. Mrs. Pat Little was hired as Co-ordinator of services. She works out of headquarters in Elgin Branch, regularly visiting each of the Branches.

The concept of Union Library proved to be successful. Membership and book circulation grew steadily. It became apparent that Union Headquarters needed more space if the high standard of service to Branch Libraries was to be maintained. Plans were drawn up for an addition to Elgin Library. The Board conducted a campaign to raise the necessary funds to match a Wintario grant.

Construction on the new Union Headquarters began in the fall of 1977. After experiencing several delays caused by weather and late delivery of materials, the addition was completed this spring.

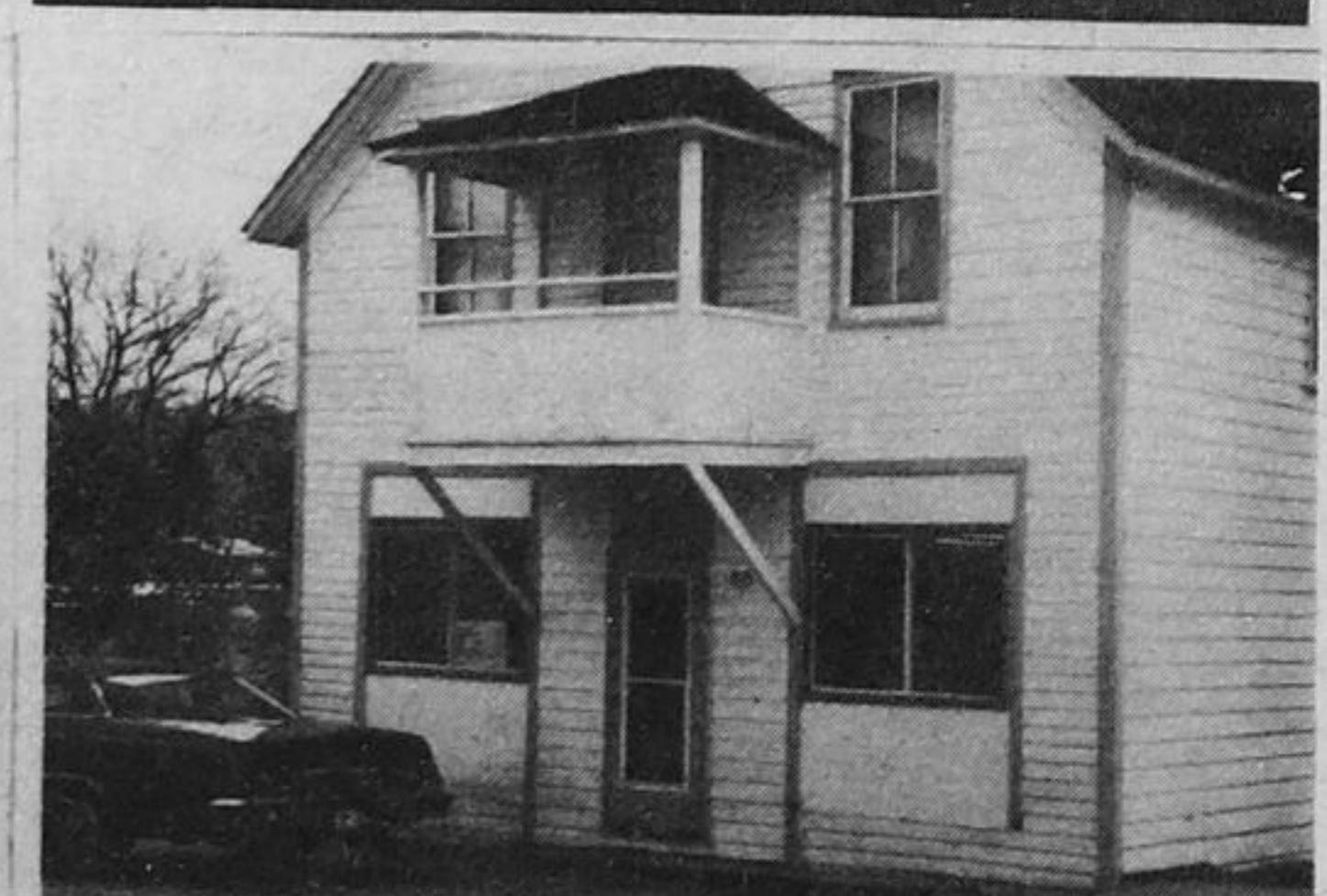
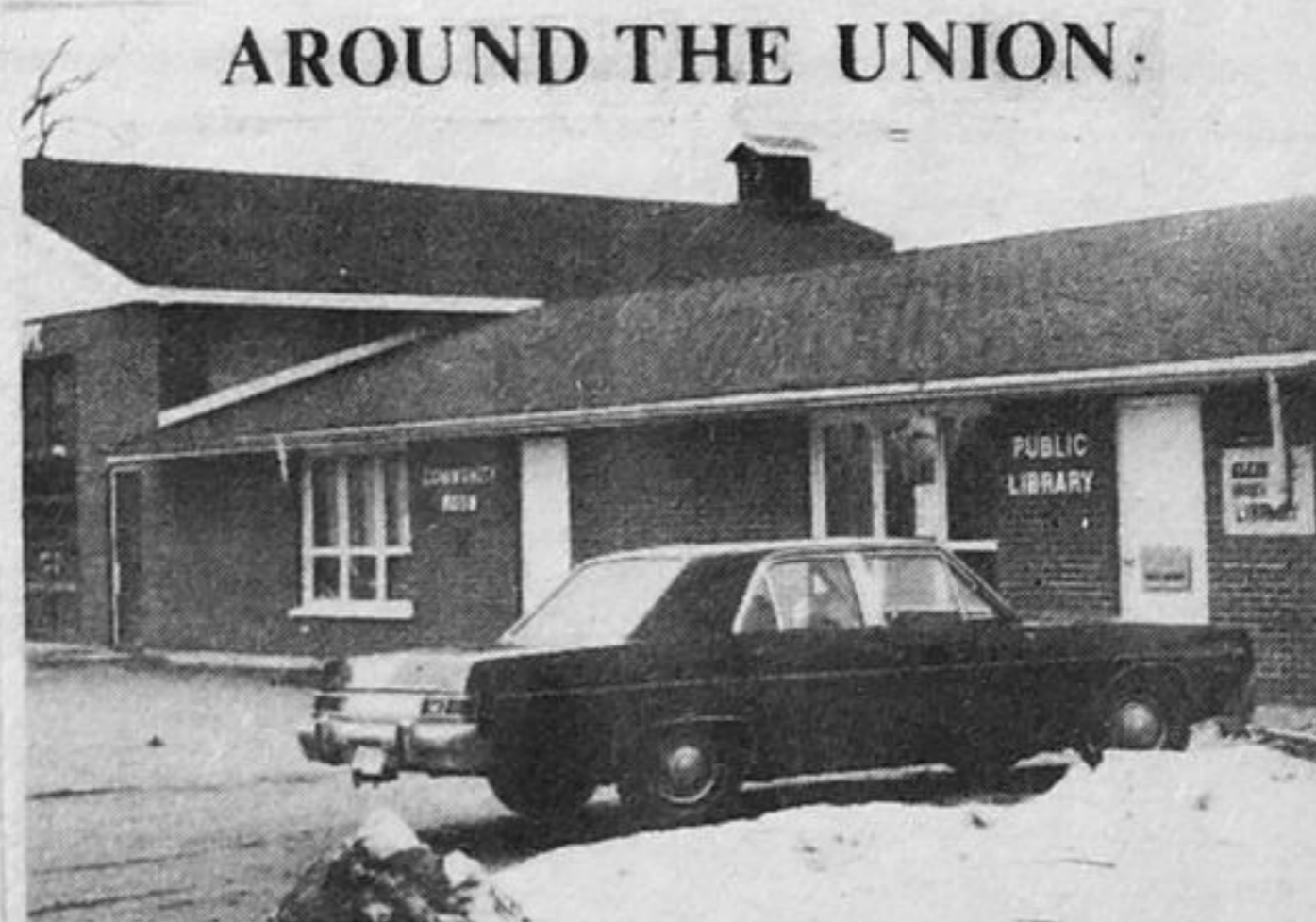
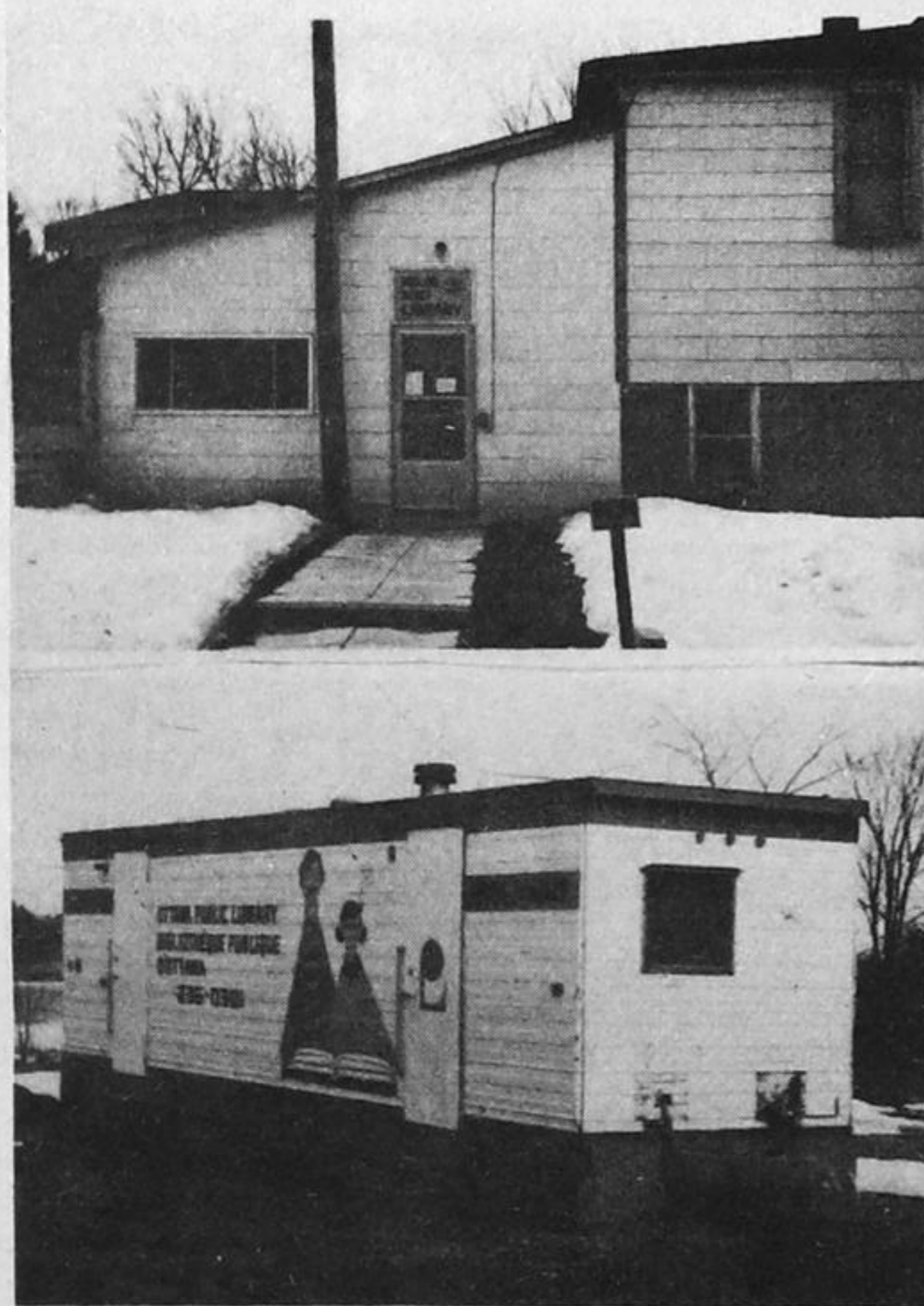
Thus, three years after its inception the Rideau Lakes Union Library is well established in the community. Its success is eloquently revealed by the figures below:

MEMBERSHIP: 1975- 1,278	BOOK CIRCULATION: 1975- 14,216
1976- 1,874	1976- 26,015
1977- 2,200	1977- 30,484

BEING FAIR AT THE FAIR

A two day learning session in Fair judging was made possible to four members of the Rideau Crafts. The fee of five dollars per person was paid by the association so that fellow artisans could become better judges not only of their own works but of others considering entry to County Fairs. These sessions held in Lombardy and organized by Mrs. Hunter and assistants from the fair judges of Toronto and Aylmer. They took their instruction very seriously and through in a few problems for the novice. After the first day of class everyone came away convinced that all good looking food is not the best to taste. Points were won too on how well they stuck to the specifications set down by the Fair Committees. Books were given out to assist everyone, experienced or not, in the ever increasing demand to upgrade the fair exhibits. A junior class was talked about in their efforts to keep the flow of exhibitors sure for the years to come. Knitting, quilting, sewing and many other subjects were put before the student judges who had to judge works in other exhibits. Throughout it all the 33 students enjoyed the exchange of information so valuable in being "Fair at the Fair". The instructors from Ont. were glad to share their many years of experience with those willing to learn new ways of judging fairs.

AROUND THE UNION:



Six Branch Libraries: (Top) Portland, Elgin, Newboro (Bottom) Lyndhurst, Seeley's Bay, Delta.