

# EDITORIAL PAGE

Dear Readers,

This month I would like to say a few words about local government. It is the talk of the day and a function that I confess I have always taken very much for granted.

As I think back on previous elections in our area, I realize that I have not been alone in my apathy. In a time when decentralization is the theme in many areas of business and government, we see our traditional forms of municipal government being converted to large regional governments. Why is this happening? Should we be concerned?

Having read my confessions above, you know you won't find the answers to these questions here. However, in this issue of the Lantern you'll find the first in a series of articles on local government. You will also be made aware of an evening seminar coming up in Portland at which these problems will be discussed.

In this election year, we urge you to learn about the operation and activities of your local government. Ensure that your voice is heard when the decisions which affect you are being made.

## Letters to the Editor

In the last issue of the Lantern, in the article on energy conservation, most club members felt it was unfortunate that a snowmobile be shown as wasting energy. We would like to defend our sport. Many pictures could have been chosen other than snowmobiles, such as the hundreds of vacationers travelling to warmer climates for the winter. They are not only consuming energy (gas) but are also spending their money in another country. We would like to stress that we don't mean to single out these persons, but feel we have to defend our sport.

We realize, of course, our sport does consume more energy than cross country skis and snow shoes, but would like to also point out the difference in monies being spent on this sport as compared to the less consuming energy sports. Snowmobilers spend millions of dollars every year in Ontario alone, paying taxes on every single item they buy. Registration fees alone amounted to \$2,278,000. in 1977. Snowmobiling creates vast employment and is enticing more and more tourists to spend their winter holidays here. Organized clubs are helping to make this sport more respectable. Snowmobilers are constantly striving to better public relations, and that is why we felt we had to answer the picture we saw in the last issue of the Lantern.

Linda Pyné,  
R.R.R. Secretary

### The Lantern's Reply

Clubs such as the Ridge Riders are to be commended for their role in promoting safe and responsible use of snowmobiles. However the recreational use of snowmobiles is one example of North America's carefree consumption of dwindling natural resources. Certainly there are, and always will be, worse offenders. It is up to each of us as individuals to do our part by choosing a conservationist lifestyle and we should do it while we still have a choice.

## INSIDE:

Local government	p.3
Lantern profile	p.4
History of Lyndhurst	p.14
Kids page	p.15
Classifieds	p.15

The North Leeds Lantern is distributed free of charge to all households in the Townships of North Crosby, South Crosby, Bastard and South Burgess, Rear of Leeds and Lansdowne; Newboro and Westport.

The Lantern is published on or before the first of every month. It is produced by a committee of volunteers and receives support from most of the townships of North Leeds.

Subscriptions are available to those outside the area at a cost of \$3/year.

Please address all correspondence to P.O. Box 89, Westport.

Editor	Doug Roantree	387-3143
Reporter	Jan Robson	387-3967
Elgin	Marilyn MacLennan	359-5723
Delta	Lucy Hensley	928-2435
Harlem-		
	Chantry Doris Vonhone	924-2539
Lyndhurst	Mrs. Olivo	928-2841
Morton	Fred Whitney	387-3300
Newboro	Sue Chamberlain	272-2158
	Colleen McLellan	272-2168
Portland	Judi Pattinson	272-2736
Seeleys Bay	Helen Sweet	387-3569
	Shirley Weaver	387-3570
Westport	Lucille Bresee	273-5704
Farm News	Doris Crowe	272-2561
Photos	Lloyd Stone	359-5292
Graphics	Hans Schaitrowsky	387-3609

## \* The Lakeland Players

Paul Osborn's "Mornings at 7"

The residents of North Leeds were treated to a charming piece of local theatre this month. The play, a rather simple comedy, was well received by full audiences in Westport, Elgin and Portland.

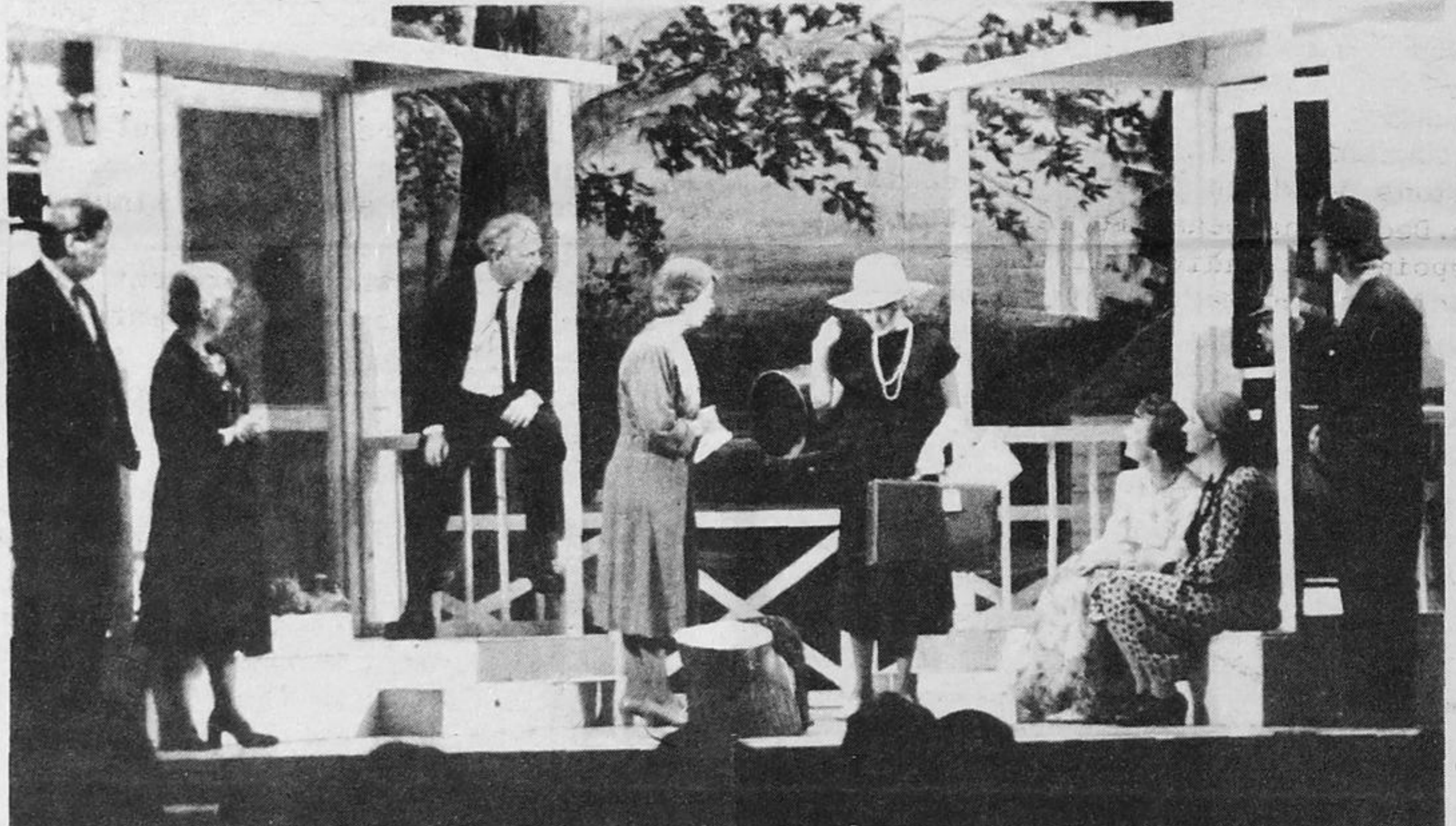
The actors were well cast in a broad range of character types. While the acting was uneven in places, overall the parts were played convincingly and with force. Considering that the Lakeland Players is a novice group, a fine job was done.

The play was well interpreted and its movement was not allowed to drag - too often a sign of amateur theatre. The play's somewhat dated humour added to its charm and warmth.

Most of the humour of "Mornings at 7" rested on the performance of several comical characters: the idiot/genius Carl, the painfully shy Homer, his over-eager financé Myrtle, and David, the pompous and eccentric intellectual. These parts were carried off very well by Graham Baldwin, Ted Landon, June Boston and Thomas Scovil respectively.

Director June Greisamer was pleased by the interest and support shown by the public. She reports that the play was able to break even financially in spite of the high cost of the set.

Director, cast and production staff of the Lakeland Players are to be commended for their entertaining production. We look forward to more in the future!



THE LAKELAND PLAYERS: (1. to r.) Ted Landon, Lorraine Colford, Ross Patterson, Marlene Thake, Bev Patterson, June Boston, Mavis Rogers, Thomas Scovil, and Graham Baldwin.

# Whitneys General Store

EST. 1855

MORTON, HIGHWAY 15

WE'RE MAKING  
EASTER BASKETS  
FOR THE KIDS



TWO SIZES  
AVAILABLE  
\$2.50 \$3.50

GOOD VALUE

TO RESERVE PHONE 387-3300 OR DROP BY ANYTIME

OPEN MONDAY TO SATURDAY 9AM-9PM