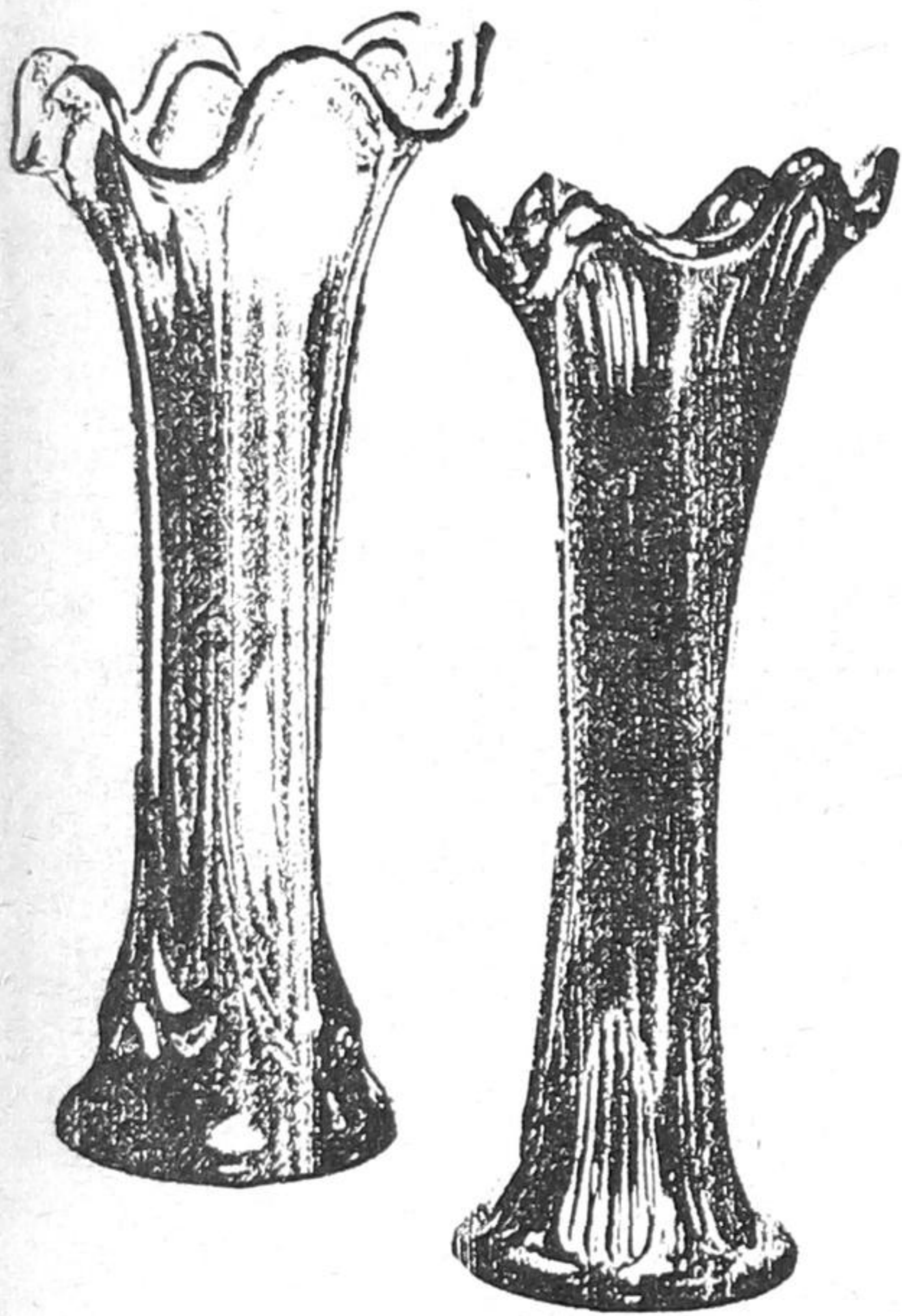


North Leeds LANTERN



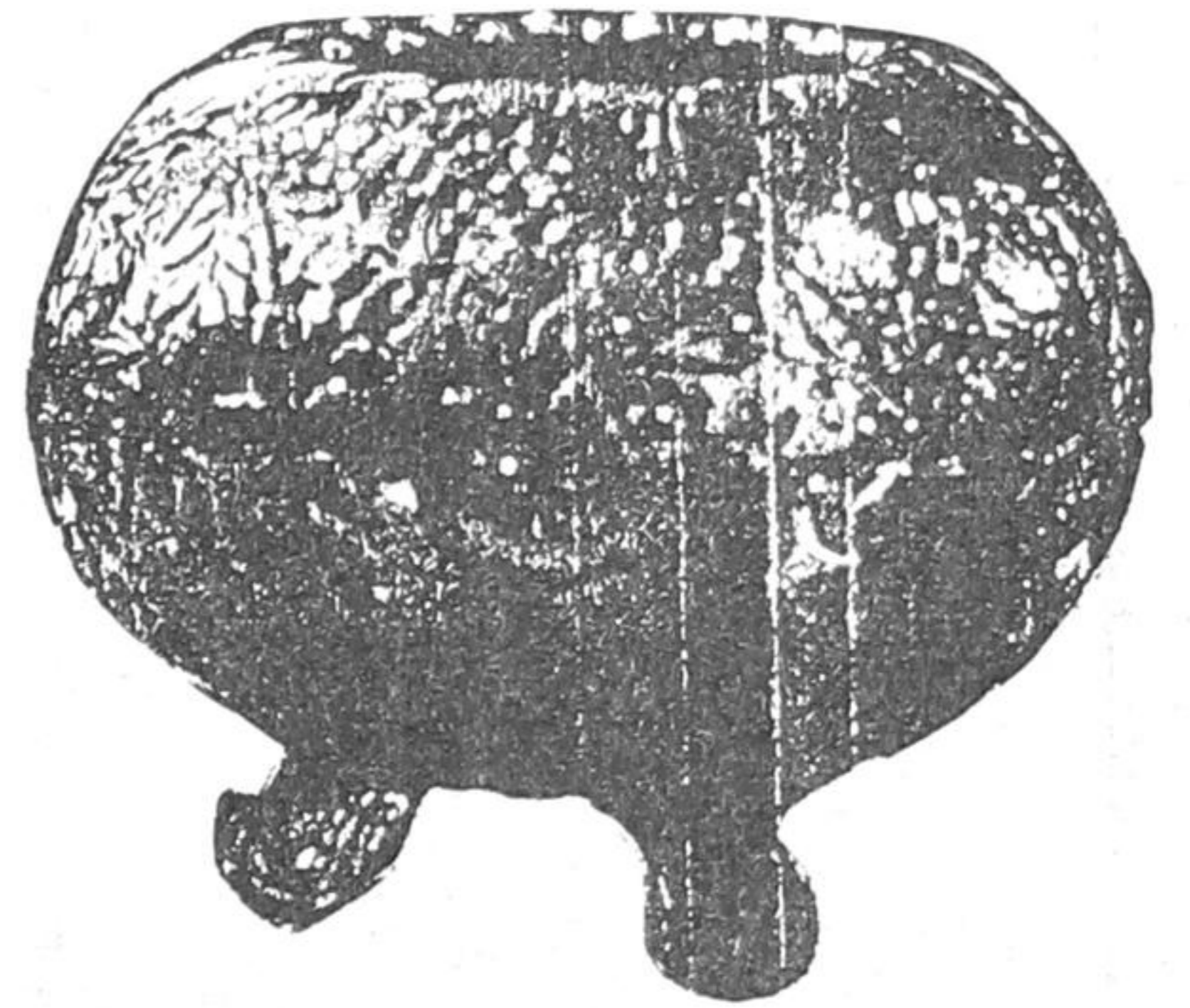
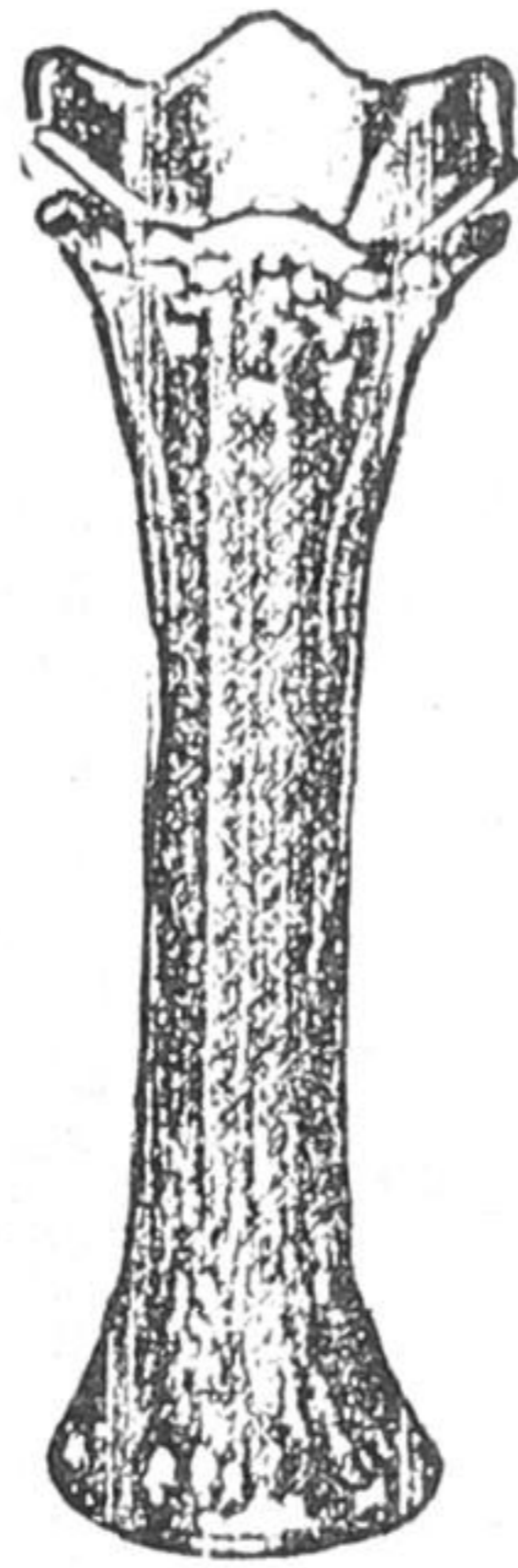
VOLUME 9 NUMBER 7/8 JULY/AUGUST 1985



*Swirled Flute, Green,
Diamond and Rib, Amethyst,*



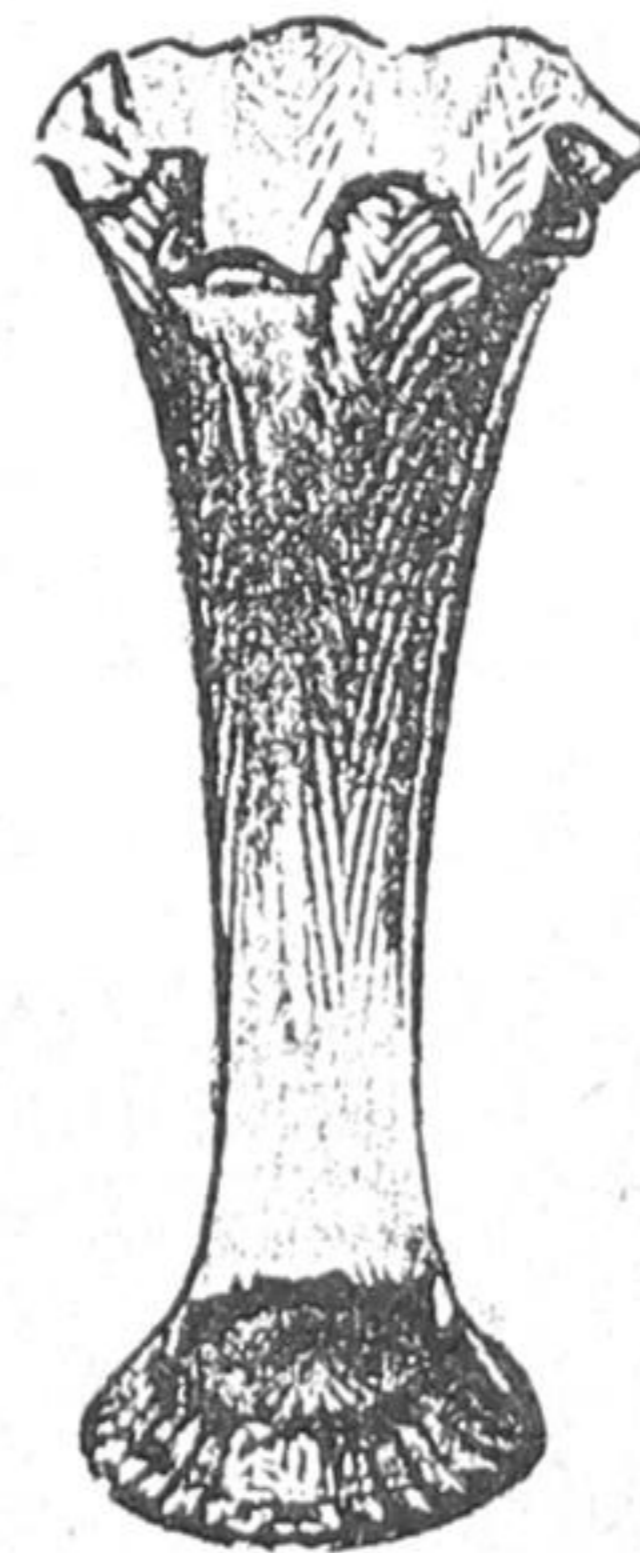
*Lined lattice, dark Purple,
April showers, Blue,
Spiralex, Blue,*



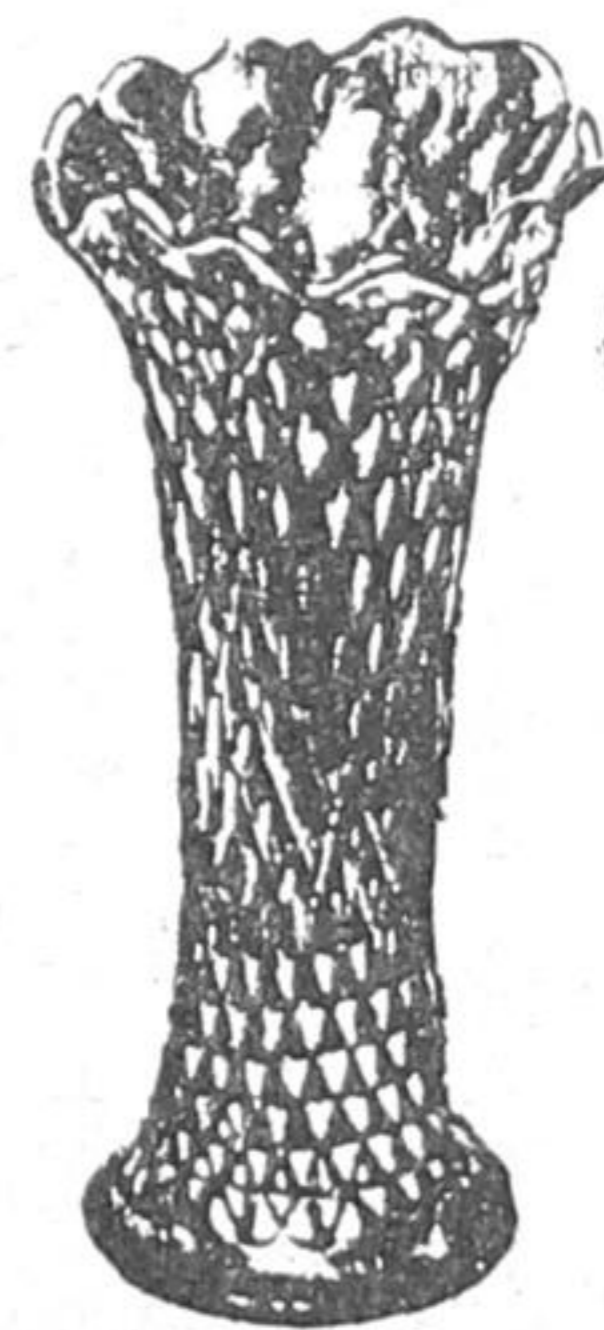
Louisa, Green,

Carnival Glass Flower Holders

by Lawrence Hartnell
reprinted with kind permission
of The Upper Canadian



*Feathers, Green,
Point, Amethyst,
Panels, Green,*



*Diamond
Plume*