

FOCUS

THE NORTH LEEDS LANTERN

A little background: First issue, a set of duplicate sheets of paper containing news of the area, distributed throughout the North Leeds district February 1977.

First editor: Doug Roantree, who set the example for all those who followed, when he accepted "somewhat reluctantly".

Current editor: Doug Roantree, who was still somewhat reluctant, 10 years later. Doug is also one of the layout night regulars and the one who makes sure the Lantern gets to the printers on time.

and now...the Current situation..DUE TO CIRCUMSTANCES BEYOND OUR CONTROL. Doug can no longer give us his time and energy on "layout night", although he has somewhat reluctantly, agreed to stay on as editor.

WE ARE GOING IT ALONE THIS MONTH
DO WE HAVE ALL THE ADS ?
WILL JANSJE FIND ALL THE TYPOS ?
WILL BETTY FIND THE PRINTERS ?

IF YOU FIND ANY "GREMLINS" DON'T WORRY. IF EVERYTHING GOES ACCORDINGLY THEY SHOULD BE JUST IN TIME FOR "HALLOWEEN".

TO
ALL ADVERTISERS
ORGANIZATIONS
READERS & SUBSCRIBERS
& Users of the Lantern:

EFFECTIVE IMMEDIATELY:

ALL Material -
Ads, Notices, Articles,
Coming Events, etc.
including
Enquiries for Information, etc.

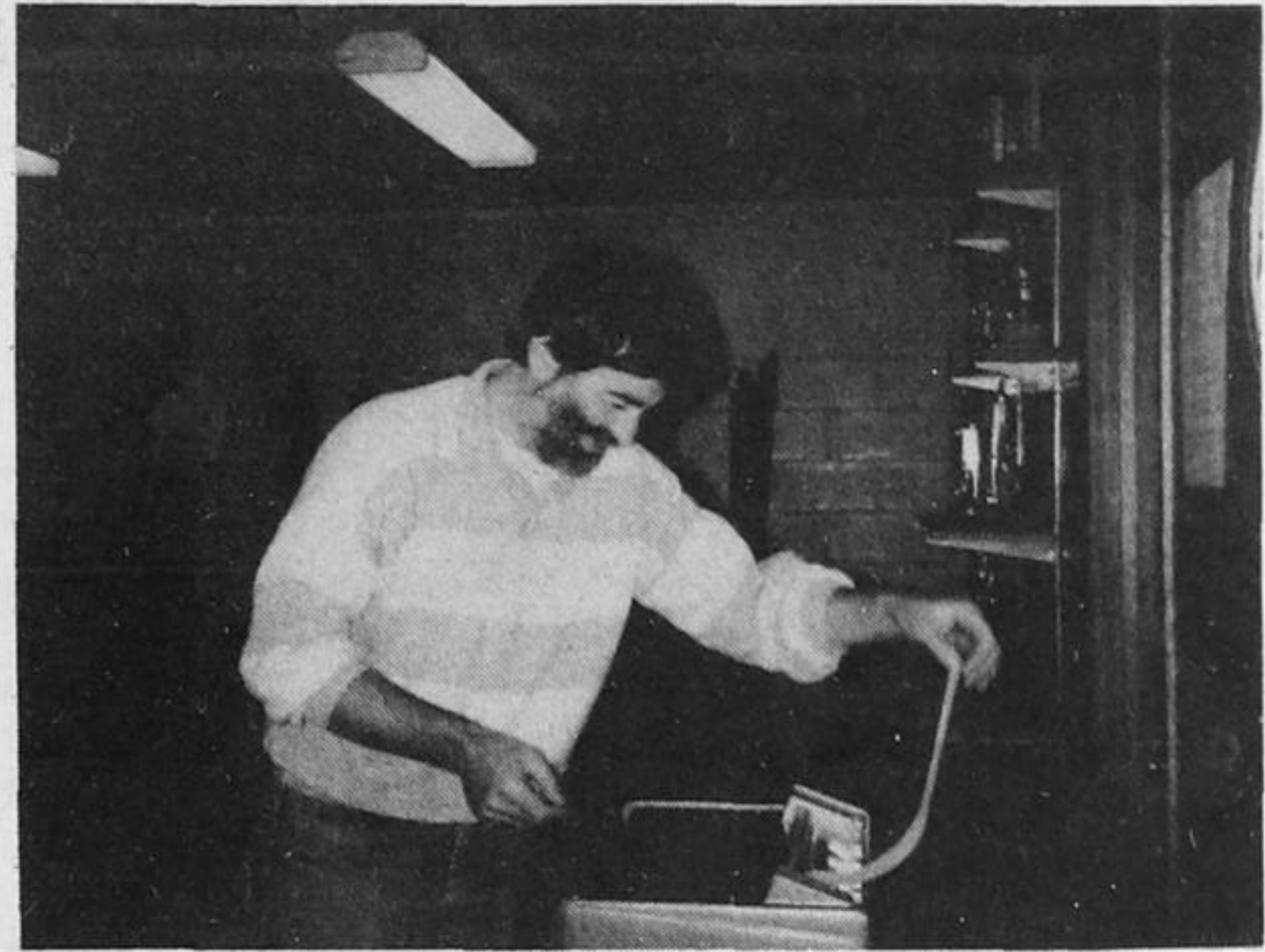
SHOULD BE DIRECTED TO:

North Leeds Lantern
P.O. Box 136
Elgin, Ont.
K0G 1E0

PLEASE NOTE

There will be no January issue in 1988. Deadline for December/January is November 18.

DO YOU HAVE A CONCERN REGARDING THE LANTERN??
PLEASE CALL BRYSCOVIL AT 272-3315



NORTH LEEDS LANTERN

Box 136, Elgin K0G 1E0

Hints to Help Us get your Ads RIGHT!

- 1) Make sure we can READ your copy.
- 2) Indicate the SIZE you wish to insert.
- 3) DO NOT write directly on logos, art work, illustrations, etc you wish us to use - write your required copy on a separate sheet indicating where you wish it inserted.
- 4) We DO NOT have an Art Department - requested illustrations will be as close as possible. If sending in "illustrations" logos etc. please remember: ONLY BLACK & RED CAN BE REPRODUCED Blue, and other pale colours DO NOT photograph. (Our printer uses a photographic process)
- 5) If you take an ad (yours or another companies) from another newspaper, you are required to get permission to use it from that paper.
- 6) MAKE SURE YOUR AD IS IN BEFORE THE DEAD-LINE (The Wednesday BEFORE the LAST Tuesday of each month)

Thank you for your co-operation.

