



CHAFFEY'S LOCK WI

The October meeting of Chaffey's Lock Women Institutes met at the home of Lola Timpany there were 14 members present, Most Summer members (snow birds) have returned down south.

President Marion Chester opened the meeting with the Ode and Mary Stewart Collect.

Roll Call was "Have you had an embarrassing moment speaking in front of a group? Tell us about it. Members recounted some amusing incidents, such as forgetting their speech and one member recalled how the wig she was wearing was accidentally pulled off revealing her hair in pincurls.

Member Linda Pyne who is a member of The Limestone City Toastmasters Club explained the duties of the various Toastmasters such as Jokemaster, English Master and Table Topics Master. Being a member gives a person confidence in themselves. Toastmaster Club was started in Russia and now has hundreds of branches world over.

Meeting continued with the secretary reading the minutes of the last meeting. Thea Warren forwarded a motion to donate \$200. to the Hall board. It was seconded by Lorie Truemner and passed.

It was agreed to sponsor the 4 H club again this year.

Nancy Hughes is celebrating 22 years as leader of the Elgin group. A committee was formed to start preparations for the annual Christmas party. President Marion closed the meeting and Thea thanked Lola for the use of her home and the hostesses for their refreshments.

Anne Willoughby

SOUTH CROSBY FRIENDSHIP CLUB NO. 577

Following our usual delicious pot luck dinner on November 11th twenty-six members answered the roll call after the meeting was opened with the Lord's Prayer. The minutes and the treasures report were read and approved. Flo Goldup was presented with an Honorary membership certificate. Georgie told of their visitations and passed around cards to be sent to various shut-ins. A motion has passed for the club members to wrap christmas gifts that are given to the township office for distribution.

A contract to repair the roof was discussed and approved. A decision was made to provide our own Christmas dinner rather than have a caterer. The Monday afternoon euchres have been very well attended and seem to be enjoyed by all.

June Gamble

Discover

Birkenstock

Step into Birkenstock footwear and find a remarkable blend of comfort and style. Contoured footbeds provide cushioning and support, while your feet remain free to move naturally.

Make Walking A Pleasure!

- 25% Off Suggested Retail Value
- Wide Selection of Styles, Colours & Sizes
- Special Orders Welcome

CALL TODAY!
Nancy Ross 928-2575 after 6:00 p.m.



HAMBLEN CHRISTMAS TREES
924-2090

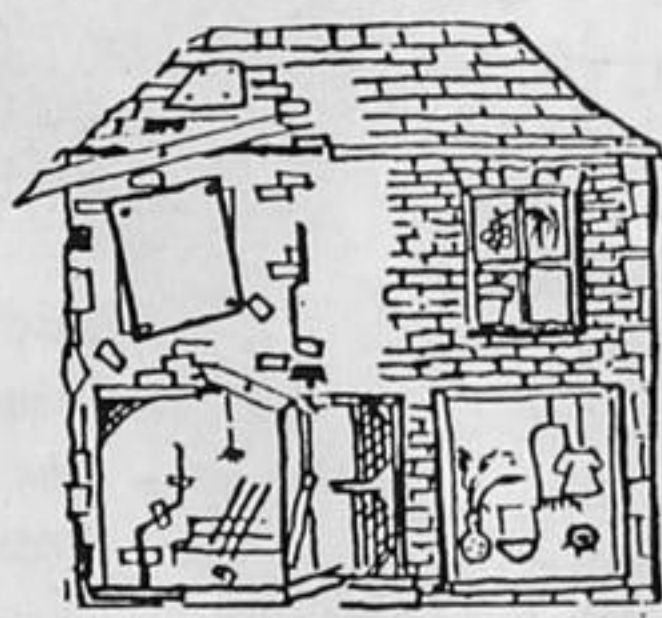
**Hard Island Road (Paved!)
3 km. North of Athens
9 a.m. - 4 p.m. Daily**

**Have your tree wrapped in plastic netting for easy handling
Over 5000 trees for your selection
Pine and Spruce**

**Bring this ad. with you for a draw for a free tree next year.
Wreaths and Crafts Available**

NAME:
ADDRESS:
PHONE NUMBER:

1991 Winner-
Judy Lowe, Brockville
This ad is worth \$1.00 off with purchase of tree



NORTH LEEDS COMMUNITY DEVELOPMENT CORPORATION
BOX 137 ELGIN, ONTARIO
K0G 1E0
(613) 359-1071

Proposed Garden for the Handicapped and Seniors at Guthrie House

The North Leeds Community Development Corporation is seeking funds to develop the present garden at Guthrie House to make it accessible to handicapped persons and seniors.

The design includes paths and a patio suitable to those using wheelchairs. There would be a shaded area with seating and plantings of shrubs and flowers to provide a pleasant small park atmosphere.

It is anticipated that the garden will be used by persons attending clinics and meetings at Guthrie House as well as seniors and visitors in the area as it is only a short distance from shopping and other facilities in Elgin.

The North Leeds Community Development Corporation has applied for government funding which could meet part of the cost, but fundraising for this project is now underway.

One of the first events will be a Christmas Tea Wednesday, the 9th of December 1 - 4. Admission: \$2.50.

Please join us at Guthrie House for some Christmas fare and a little browsing at our Craft Table.

Other donations can be made at Guthrie House or mailed to Box 137, Elgin, Ontario, K0G1E0 and are tax deductible.

Dear Editor,

I hope your many readers will study this comparison before purchasing a Christmas tree this year.

Artificial Tree	Compare to	Real Tree
Hong Kong, Korea	--made--	Grown locally
Petroleum/Chemicals	--made from--	Sun, Soil, Water
Same tree each year	--selection--	Many sizes, varieties; different each year
None	--odour--	Pleasant scent
Plastic burns, with toxic fumes	--fire--	Fresh tree is resistant when kept in water
Takes up space throughout the year	--storage--	Returns to nature

With the growth of Christmas trees we are renourishing the soil of dormant farm land and encouraging wildlife habitation.

By choosing a real tree, you are contributing to environmental renewal.

Why not visit a Christmas tree farm this year to select a fresh tree. Some of the old Christmas traditions are the ones which give our children the happiest memories in years to come.

Sincerely,

Bill Hamble

HUGHSON FLOORING

SELLING ALL GRADES OF:
**Carpet & Vinyl
Quarry Tile
Ceramic Tile**

AT REASONABLE PRICES
**Call Anytime
387-3235**

**INSTALLATION AND REPAIRS
STEAM CLEANING**

Ask for FREE Estimate Satisfaction Guaranteed