

PROFESSIONAL CARDS.

R. GAGE, ARCHITECT, OFFICE—Montreal Street. ADAM MARTIN, ACCOUNTANT, OFFICE—Clarence Street, at King St. POWER AND SON, ARCHITECTS and BUILDING SURVEYORS, OFFICE—Wellington Street, Kingston. L. CLEMENTS, DENTIST, DIRECTLY OPPOSITE THE POST OFFICE, WELLINGTON STREET, ESTABLISHED IN KINGSTON, 1850. DR. W. G. ANGLIN, M.R.C.S., ENG., OFFICE—32 Earl Street, near King Telephone communication. JOHN STRANGE, LL.B., SOLICITOR, OFFICE—Catherine Street, opposite the Post Office. MONEY TO LOAN at lowest current rates. WALKER & WALKER, ATTORNEYS, SOLICITORS, &c., KINGSTON, OPPOSITE THE POST OFFICE. RICHARD WALKER, J. JOSEPH B. WALKER, D. E. MUNDELL, B.A., M.D., C.M., PHYSICIAN, SURGEON, &c., OFFICE—Late Dr. McCAMMON'S, No. 25 Montreal Street. H. M. MOWAT, BARRISTER, SOLICITOR, CONVEYANCER, &c., FORD'S BLOCK, BROCK STREET, KINGSTON. MONEY TO LOAN. JOHN HERALD, M.A., M.D., C.M., (SUCCESSOR TO LATE DR. McCAMMON), PHYSICIAN, SURGEON, &c., OFFICE—Montreal Street, between Princess and Brock Streets. WM. NEWLANDS, JR., ARCHITECT, CORNER OF BROCK AND KING STREETS, OVER WADE'S DRUG STORE, ENTRANCE ON KING STREET, NEXT TO THE WHIG OFFICE. SMYTHE AND SMITH, SOLICITORS, ETC., 192 ONTARIO STREET. E. H. SMYTHE, LL.D., CHAS. FRONTENAC SMITH, ROBERT SHAW, BARRISTER, SOLICITOR, CONVEYANCER, &c., OFFICE—CORNER KING AND BROCK STREETS, OVER WADE'S DRUG STORE. DR. ELIZABETH SMITH-SHORTT, C.M., M.C.P., & S.O., LATE OF HAMILTON, 63 WEST STREET, DISEASES WOMEN AND CHILDREN, FEB. 5. DR. ALICE MCGILLIVRAY, DISEASES OF WOMEN AND CHILDREN A SPECIALTY, OFFICE—230 PRINCESS STREET, AT DR. SPARKS' OLD STAND. TELEPHONE NUMBER 196. HOMEOPATHY. C. L. CURTIS, M.D., SUCCESSOR TO DR. JARVIS, PHYSICIAN, SURGEON, &c., OFFICE AND RESIDENCE NEARLY OPPOSITE THE POST OFFICE, WELLINGTON STREET. CALLS IN THE CITY OR COUNTRY PROMPTLY ATTENDED TO. J. H. CLARK, M.D., D.D.S., L.D.S., DENTIST, GRADUATE OF NEW YORK COLLEGE OF DENTISTRY, OFFICE—WELLINGTON STREET, BETWEEN PRINCESS AND BROCK STREETS. PARTICULAR ATTENTION PAID TO THE PRESERVATION OF THE NATURAL TEETH. R. E. SPARKS, D.D.S., L.D.S., DENTIST, OFFICE—PRINCESS ST., BETWEEN MONTREAL AND SYDENHAM STREETS, RESIDENCE, NO. 21 CHARLES STREET. OFFICE HOURS, 9 A.M. TO 6 P.M., AND ON SATURDAY EVENINGS FROM 7 TO 9 P.M. TELEPHONE 196.

FURNITURE, &c.

DON'T WAIT.

IN THE DULL SEASON PAPER HANGING

Have your Paper Hanging Done. Do not wait for the Spring rush. The work can be done better now. An elegant line of Hangings to select from. Always the best selected and most stylish stock in Eastern Ontario to choose from. Give us a call and look over our stock. No trouble to show goods at.

ROBINSON'S WALL PAPER DEPOT

277 Bagot Street. LADIES & GENTLEMEN

If you want a Nice Fancy JEWELRY CASE all at my place and leave your order. Just the Thing for a Nice Present. They are made at my place in every style or design.

115 BROCK STREET, The Picture Frame Factory, P. OHLKE, P.S.—Cheap Show Cases a Specialty.

GARNOVSKY & ANDERSON, Cheap Furniture and Upholsters.

TELEPHONE--38.

BETTER BARGAINS

IN BEDROOM SUITES, PARLOR SUITES, AND SIDEBOARDS.

Than ever before in the city at ANDERSON'S, - 58 BROOK ST.

IF YOU WANT THE Cheapest & Best Furniture

OF ALL DESCRIPTIONS, CALL AT H. BRAME'S,

51 PRINCESS STREET, cor. Sydenham Street, Kingston.

HENRY BRAME, Leading Undertaker and Embalmer, -251 PRINCESS STREET, - Cor. Sydenham Street. Telephone communication.

F. C. MARSHALL, UPHOLSTERER & CABINET MAKER.

PARLOR SUITES AND LOUNGERS of every description made to order. REPAIRING promptly attended to. Chairs re-seated. MATTRESSES restuffed or made to order. CARPETS cleaned and laid.

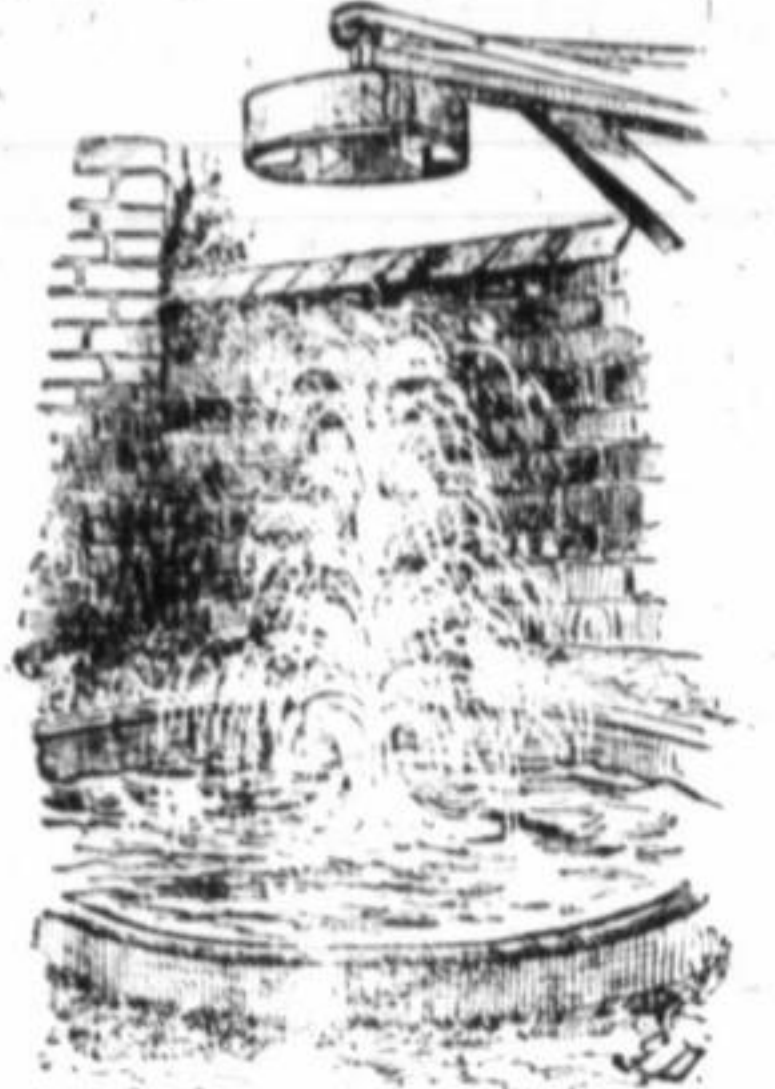
241 PRINCESS STREET.

SCIENCE AND PROGRESS.

REMARKABLE FACTS CONCERNING ANTS AND SPIDERS.

A Compensating Balance for a Watch on Which Magnetism Has No Effect. Description of an Apparatus that Produces an Artificial Waterspout.

At a recent session of the French Academy of Sciences M. Mascart described the apparatus shown in the illustration and the resulting phenomena of an artificial waterspout.



AN ARTIFICIAL WATERSPOUT. A drum 3 feet in diameter is set in revolution by a pulley and belt. It has six radiating pieces, and its rotary velocity at the circumference is from 90 to 120 feet per second. The drum, as a rule, is placed some 10 feet over the reservoir of water. As soon as the speed of rotation rises to the lower velocity (60 feet per second), spirals are observed to form on the surface of the water, which converge towards a center from which a cone steadily makes an appearance, about 8 inches in diameter by 4 inches in height. This first cone is then surmounted by a second cone, but reversed, which is formed of numerous drops, which rise to heights of perhaps 5 feet, and fall back at distances ranging from 3 feet to 10 feet, according to the velocity of the drum. The finest drops or spray will reach as high as the drum itself. Bits of straw or chips of wood placed on the surface of the water are drawn together by the vortex, and form a sort of cord, which will spirally to the axis of the artificial waterspout.

Intelligence of Insects.

An unquestionable fact has been finally established by recent methods of observation on the habits of insects and other animals, and that is, that individuals of the same species vary in intelligence; that they are not automata; that they are not impelled by a blind instinct to perform certain acts with unerring accuracy. On the contrary, affirms Science, they often vary greatly in their ability to provide for their young, in their skill to secure sufficient food, in their wit to avoid danger; in other words, they make blunders and mistakes, and involve their progeny and even their colony in ruin. This individual variation in intelligence is brought out very clearly by a patient series of observations made by Drs. G. W. and E. G. Peckham on the special senses of wasps. They not only repeated many of the experiments of Sir John Lubbock, but many new and ingenious experiments were devised. The studies were for the purpose of investigating the mental power, sense of hearing, color, direction, memory, emotion, power of communication, general intelligence, etc. An interesting result of their painstaking work was the determination of individual differences as to the faculty of memory and power of distinguishing color and direction. This kind of study of the habits of insects has brought to light features of the most surprising character. The remarkable studies of Sir John Lubbock, Dr. Moggridge and others in Europe have been paralleled in this country not only by the observations above quoted, but notably by the labors of Rev. H. C. McCook in his studies of the American ants and spiders.

Non-Magnetizable Watch Balance.

An artist of Geneva, it is announced, has found a method of making a compensating balance for a watch, on which magnetism has absolutely no effect. A watch fitted with a balance of this kind, and with a spring of palladium, and submitted to the action of a very powerful electro magnet, will stop immediately, but so soon as it is removed from the magnetic influence it goes on again without the regulation being in any manner interfered with. An ordinary watch, on the contrary, when subjected to a similar test, becomes thoroughly charged with magnetism, as many a watchmaker has found out to his cost.

A Simple Telephonic Apparatus.

A telephonic apparatus, so simple in construction, as not to cost more than half a dollar has been invented in Paris, which can be fitted to the electric wire of the ordinary ring apparatus at front doors, in interior rooms of houses, everywhere in short, where the ordinary electric buttons are used, by means of which it will be possible to give and receive instructions, to know who is knocking at the door, to communicate, in short, by speaking as well as by ring. On the advantage of this in every day life it is unnecessary to dwell. It is being fitted up on trial in hotels.

Fitting Keys in Keyways.

In fitting keys in keyways an expert advises that the keys should make an easy fit on the straight sides, the locking coming on the tapers. Oil the keyway, and either chalk or red lead the key; enter it, and the abrasion of the lead will show where it binds; ease off slightly with a file, and continue till the tapers bear solid the whole length, then send it home solid. The oiling is important, because if you are fitting into cast iron you will "seize a nut," making ragged grooves in the work, and make it very difficult to drive the key out.

A Lubricant for Fine Machinery.

Put pure olive oil into a clear glass bottle with strips of sheet lead and expose it to the sun for two or three weeks, then pour off the clear oil and the result is a lubricant which will neither gum nor corrode. It is used for watches and fine machinery of all kinds.

The Power of Telescopes.

The most powerful telescopes now in use magnify 2,000 times. As the moon is 240,000 miles from the earth, it is thus practically brought to within 120 miles, at which distance the snow peaks of several lunar mountains are distinctly visible.

Decrease in Gold Production.

According to what are generally adopted as trustworthy reports from Victoria, Australia, the yield of gold of the colony was last year 130,000 ounces less than in 1885.

PHYSIOLOGY AND HYGIENE.

Icecream Poison—Diseases in the Confinery. Open Eyes and Nervous Tension.

Dr. T. H. Hoskins claims that typhoid fever and diphtheria are more common on farms and in villages than in cities, and proceeds to tell why. Prominent among primary causes of these diseases on farms are classed the contamination of wells, the cesspool and vault, the slop hole, imperfect drainage, or none at all, and wet, foul cellars. Typhoid fever, says Dr. Hoskins, has its origin often in well contamination, while diphtheria is pre-eminently a sink spout and slop hole disease. Damp, unventilated locations are the favorite haunts of consumption. The causes enumerated suggest the preventive. Let the water consumed by the family come from wells so situated and protected that they cannot be polluted by the contents of vault, farmyard or cesspool. The slop hole has no excuse for existing at all. Do away with it, and furnish free drains that will carry off the water far enough from the dwelling to insure safety. If pipes or drains are without safety traps see that these are provided. In damp, unventilated locations, in addition to securing perfect cellar drainage, it is advised to remove all trees that interfere with the free access of the sun and air to the dwelling house.

A Hurried Man's Happy Thought.

The inability of professional men, and especially physicians, to be regular in their time of taking meals conduces to the early ruin of the digestion and the breaking up of the system. Not only do such persons suffer from want of food at the proper time, but, after being out many hours, they become too exhausted to digest the full meal they are tempted to take when at length it is obtainable. Recognizing this fact, an eminent doctor has devised a plan which he says has answered admirably and has been adopted by other doctors. He provides himself with a small bottle of lime water, to which, when passing a convenient dairy shop, he adds milk, or he puts a small flask of the mixture into his pocket. He finds that this with a water biscuit keeps him harmless on a long fast and enables him to digest a meal when he can get it.

Open Eyes and Nervous Tension.

We are told to keep our eyes open, but it is often well to keep them shut. One of the chief causes of nervous disease is the straining of the eyes and the constant tension of the mind. When stretched out in the barber's chair do not try to read a newspaper, but close your eyelids under the soothing undulations of the brush or the dreamy sensation of the shampoo. In a railway carriage, instead of staring out your sockets at the landscape or over a brook, fold your arms, bow your head and listen to the whir of the wheels. In the concert room, in place of constantly surveying the audience or watching the singer, shut your eyes at times and let the music sink into your soul and rest your tired nerves.

Tyrotocicon, the Ice Cream Poison.

Professor Vaughn, who has spent much time in investigating in regard to tyrotocicon, the poisonous substance sometimes found in ice cream, regards it as identical with dinitrobenzol, a substance known for many years and first prepared from aniline by a German chemist. He finds that tyrotocicon is caused by a peculiar fermentation of the cream before it is frozen, and can be separated from the cream by treatment with soda and ether, which dissolve the poison, which is entirely destroyed by boiling the ice cream mixture before it is frozen. It is not a property of milk or its products in a natural state, but the result of a mixture of other ingredients therewith.

Watercress for the Complexion.

Watercress is strongly recommended by a physician as a purifier of the complexion. Next to this, which is not always obtainable, come freshly prepared green salads such as dandelion, lettuce, endive, beetroot and the like. These may be dressed with oil and lemon juice if liked, but no vinegar.

Protection from Insects.

According to The London Lancet people may protect themselves, their children, horses and cattle from gnats, mosquitoes, flies, etc., by sponging with a weak solution of carbolic acid. The solution need not be more than 6 or 7 per cent acid, and it may be added to water till the latter smells strongly.

When Baby was sick, we gave her Castoria, When she was a Child, she cried for Castoria, When she became Miss, she clung to Castoria, When she had Children, she gave them Castoria.

Humorous Notes.

The believer in metempsychosis is convinced that after death some men will turn into mules—they are such chronic kickers. England has made the Khedive a Knight of the Bath. Which of the other nations will be the first to send him a cake of soap and a towel?

As yet it is undetermined which is the worse—The man who can sing and won't or the man who can't sing and will.

Courting a girl is like starting a newspaper. It starts out as a weekly, then it becomes a tri-weekly, then merges into a daily.

Henry George preaches that men cannot own land because they did not make it. That theory relieves George of a fearful responsibility as to the ownership of his head.

Try and be Cured.

Lame back and nervous debility, associated with rheumatism, is sometimes met with in every day life, but as a rule we find not more than two of these complaints in the same party. Be this as it may, the only sure and perfect cure is electricity and the best form of administering it is by Norman's electric belts and insoles. W. J. Wilson is agent, and from him you can procure testimonials and circulars relating to any of your complaints.

A Fact Worth Remembering.

Mr. Jas. Binpie, of Toronto, states that his little baby when three months old, was so bad with summer complaint that under doctors' treatment her life was despaired of. Four doses of Dr. Fowler's Wild Strawberry cured her. She is now fat and hearty.

B. Laurance's Spectacles.

The only sure aids to perfect vision, at J. C. King's drug store. Buy none other. See every pair is stamped "B.L." Imitations abound. The frame may sometimes be closely imitated, the lens never.

Reliable.

"I have used Dr. Fowler's Extract of Wild Strawberry, and found it a sure cure for summer complaint. I was very sick, and it cured me entirely." Alexander W. Grant, Moose Creek, Ont.

Be on the lookout for the Japanese art sale by J. E. Hutcheson.

TRAVELLING.

CUNARD LINE.



(LIMITED) NEW YORK AND LIVERPOOL, (CALLING AT CORK HARBOR.)

From Pier No. 40, N.R., New York. FAST EXPRESS MAIL SERVICE.

Table with columns: Ship Name, Day, Date. Includes ETRURIA, AURANIA, UMBRIA, SERVIA, ETRURIA, AURANIA, UMBRIA, SERVIA.

RATES OF PASSAGE:

Cabin—\$60, \$80 and \$100, according to accommodation. Intermediate passage—\$35. Steerage at Very Low Rates. Steerage Tickets to and from London and Queens-town and all other parts of Europe at lowest rates.

Through Bills of Lading given for Belfast, Glasgow, Havre, Antwerp and other points on the Continent and for Mediterranean ports.

For freight and passage apply at Company's Office, No. 4, Bowling Green, New York.

YERON H. BROWN & CO., Or to J. P. Gildersleeve, Agent, 42 Clarence Street.

ALLAN LINE Royal Mail Steamships.

THE - SHORTEST - SEA - PASSAGE, AVERAGE TIME 8 DAYS.

Table with columns: Steamship Name, From Montreal, From Quebec. Includes Circassian, Sardinian, Polynesian, Parisian, Sarmatian.

Rates of Passage by the Mail Steamers: From Quebec to Londonderry and Liverpool: Cabin—\$60, \$70, \$80. Return—\$110, \$130, \$150. Intermediate—\$30. Return—\$60. Steerage \$24. Return \$40.

Rates of Passage by the Extra Steamers: Cabin—\$50, \$60 and \$70. Return—\$90, \$110 and \$130. Intermediate—\$30. Return \$60. Steerage at very low rates.

The Steamships of the Allan Line come direct to the Railway wharves, and passengers are forwarded on by special trains to Montreal and the West.

The last train connecting at Quebec with the Mail Steamers, sailing from that port on Thursday, leaves Kingston on Wednesday at 1:45 p.m.

The last train connecting with the Extra Steamers sailing on Friday, leaves Kingston on Thursday at 1:45 p.m.

Passengers desiring can be booked via R. & O. N.Y. Co. Steamers, enjoying the scenery of the 1,000 Islands and the Rapids of the St. Lawrence.

For Tickets and every information apply to THOMAS HANLEY, World's Ticket Agent, Corner Johnson and Ontario Streets, GRAND TRUNK CITY PASSENGER STATION.

BAY OF QUINTE STEAMBOAT ROUTE.

DAILY LINE TO PICTON, DESERONTO AND BELLEVILLE.

The Fast and Elegant STR. CAHERO,

(C. H. NICHOLSON, MASTER.)

Will, until further notice, leave Gunn's Wharf at 3:30 p.m. sharp for Bay of Quinte ports, arriving at Picton at 7:30 p.m. and going through to Deseronto and Belleville every night except Friday, when she stops at Picton over night.

Returning leaves Belleville Monday, Wednesday and Friday at 6:00 a.m. sharp; Deseronto 7:30 a.m., and Picton 9:30 a.m.; leaves Belleville Tuesday and Thursday at 6:00 a.m.; Deseronto 8:30 and Picton 7:00 a.m. On Saturday leaves Picton at 3:00 a.m.

On Saturday, during July and August, this steamer makes a special excursion trip to 1,000 Islands, leaving Kingston at 2 p.m. and returning leaves Kingston for Bay ports at 8 p.m. Magnificent accommodation for passengers and lowest freight rates given.

Full information given by applying to the Captain on board, or to A. GUNN & CO. J. P. GILDERSLEEVE, Freight Agents, Pass. Agents.

TRI-WEEKLY TRIPS BETWEEN KINGSTON & SMITH'S FALLS.

THE STEAMER RIDEAU BELLE,

(D. NOONAN, MASTER.)

Will leave Kingston every Tuesday, Thursday and Saturday at 11 o'clock a.m., calling at all intermediate ports, and will arrive at Smith's Falls at 12 o'clock p.m.

Returning, will leave Smith's Falls every Monday, Wednesday and Friday morning at 5:45 o'clock and Jones Locks at 6 o'clock, calling at all intermediate ports, arriving at Kingston 6:30 o'clock p.m.

All day trip, giving opportunity of seeing the splendid scenery of the Rideau and other lakes both ways. Passengers will have nearly two hours at the picturesque Jones Falls, one of the most romantic spots on the continent.

Every attention paid to the comfort of passengers. Freight handled with care and despatch. Through freight consigned to our care will have prompt attention.

For further particulars apply to the proprietors, Noonan & Bujis, Capt. A. Foster, Smith's Falls; or James Swift, Kingston.

MONTREAL AND WAY PORTS

Fast, Commodious, Upper Cabin Steamer "ALEXANDRIA,"

(CAPT. SMITH, MASTER.)

Will leave Gunn's wharf every Monday evening at 7 o'clock, for Montreal, calling at Gananoque, Brockville, Prescott, Ogdensburg, Morrisburg, etc., running all rapids, and arriving in Montreal early Tuesday evening.

Returning, leaves Montreal Thursdays at 12 o'clock noon, for Kingston, arriving Friday night, leaving Kingston for Trenton and Bay of Quinte ports on Saturday mornings at 4:30 o'clock a.m.

Passen for accommodation unsurpassed. Return tickets at reduced rates. Freight rates as low as the lowest. For tickets and other information apply to A. GUNN & CO., Agents. May 6th.

NEW GOODS AT HORSEY'S HARDWARE HOUSE. Refrigerator, Ice Cream Freezers, Lawn Mowers, Hose Reels, Garden Hose, Iron Beds, Door Mats, Agate Hose and Brass Ir Cages. Ready Mixed Paint \$1.25 a gallon. R. M. HORSEY & CO.

TRAVELLING.

KINGSTON & PEMBROKE CANADA PACIFIC RAILROADS.

New, Direct, Shortest, Quickest, Cheapest and Best Equipped All Rail Route to Maritoba, the North West, and British Columbia points.

THE BEST AND CHEAPEST ROUTE

Between Kingston, Peterboro, Toronto, St. Thomas, London, Ottawa, Montreal, Quebec, and all points east and west.

TRY IT ONCE AND YOU WILL TAKE NO OTHER. Elegant Drawing Room Cars are run on all Express Trains between Kingston and Sharbot Lake.

No. 3 Express leaves Kingston at 12:10 p.m. Arrives Toronto 8:30 p.m.; Ottawa, 6:25 p.m. Montreal, 8:15 p.m.; Renfrew, 4:10 p.m. Passengers leaving by this train will reach Winnipeg in 40 hours.

No. 1 Mixed leaves Kingston 7:30 a.m.; arrives at Sharbot Lake 10:00 a.m., and Renfrew 2:45 p.m., connecting with C.P.R. Express for points east.

No. 4 Express leaves Kingston at 4:15 p.m.; arrives at Sharbot Lake at 7:10 p.m.; Renfrew at 10:45 p.m.

No. 7 Express leaves Kingston at 11:45 p.m., connecting with C.P.R. Night Express Train at Sharbot Lake for all points east and west.

J. H. TAYLOR, F. CONWAY, B. W. FOLGER, Asst. Supt. Ass. Gen. Pass. Agt. Supt.

DOMINION AND INDUSTRIAL EXHIBITION, TORONTO.

Richelieu & Ontario Navigation Co.

This Company will issue First-Class Return Tickets for \$6.50, Meals and Berths included; or \$4.95, Meals and Berths extra.

Exhibitors, on presentation of Certificate signed by Mr. H. J. Hill, full fare up and Return Free. Deck passengers \$3.00.

The steamers will leave Kingston daily (Mondays excepted), at 5 P.M. for Toronto, calling at Cobourg, Port Hope and Bowmanville, (weather permitting).

At 5 A.M. for Montreal and Quebec, calling at Clayton, Alexandria Bay, Brockville, Prescott, Cornwall and Coteau, passing through the beautiful and romantic scenery of the lake of the Thousand Islands and the Rapids of the St. Lawrence by daylight.

For Tickets and any other information apply to the undersigned, Office—Foot of Johnson Street. C. H. HATCH, Agent.

TORONTO EXHIBITION.

Return Tickets From Kingston to Toronto

—VIA— K. & P. R. and C. P. R.

From Sept. 6th to 16th, at \$4.80.

All Tickets good to return until 19th September.

Trains leave Kingston 12:40 p.m., 11:45 p.m. Trains arrive Toronto 8:20 p.m., 7:28 a.m.

J. P. GILDERSLEEVE, Ticket Agent, 42 Clarence St.

INSURANCE.

Liverpool And London And Globe INSURANCE CO'Y.

ONE of the best and Safest companies doing business in Canada. Insurances effected at as low rates as any other good Company.

Invested Funds, \$35,200,700. Net income for the past year was \$8,854,300. This enormous Premium Income ought to convince assured of the desirability of placing their Insurance in a Co'y so perfectly secure.

The Company still maintains its claim to doing the largest Fire Business in the world. The Company has actually paid since its information the following large sums:—

For Life Losses \$25,000,235 For Fire Losses \$107,930,510 THOMAS BRIGGS, Agent.

SUN LIFE ASSURANCE COMPANY.

Nearly all the litigation and resisted settlements in Life Assurance arise from clauses and conditions in the policies. They often read "Indisputable after two years from any cause whatever," "provided only," that the conditions are kept intact. The "SUN" is absolutely UNCONDITIONAL, and therefore absolutely indisputable after two years. We have no "provided only."

Surplus over all liabilities \$94,432.97 Total surplus to policy holders 394,432.97 Assets 1,573,027.10 New Life business for 1888 3,114,788.40 LIFE AND ACCIDENT. For rates apply to E. C. HILL, 304 GORDON STREET

THE METNA INSURANCE COMPANY, HARTFORD CONN.

Cash Capital \$1,000,000.00 Total Assets, January 1st, 1882 3,302,272.90 Losses paid in 83 years 53,400,000.00

The leading Fire Insurance Company on the Continent. Its Annual Premium Receipts in Canada and the United States are larger than those of any other Company, and it has an unblemished record of 83 years.

August 9. JAMES SWIFT, Agent.

GUARDIAN ASSURANCE COMPANY.

Subscribed Capital \$2,000,000 Total Invested Funds upwards of \$3,901,000 Total Income \$2,768,000

Insurances against Loss by Fire accepted at the lowest current rates and claims settled without reference to the Board at London.

W. H. GODWIN, Agent for Kingston, British Whig Office, Mch. 18.

ALFRED R. MARTIN Insurance Agency.

Ford's Block, Brock Street. FIRE—City and County Agent for the Glasgow and London Insurance Company. LIFE—General Agent from Kingston to Prescott for the British Empire Mutual Life Insurance Co. of England. May 14.

MIDLAND CENTRAL FAIR! KINGSTON.

Crystal Palace Grounds, SEPT. 27th, 28th, 29th & 30th.

OVER \$6,000.00 IN PRIZES! SPECIAL ATTRACTIONS EACH DAY.

Prize Lists can be obtained from the President, J. B. Walker; Vice-President, J. Rodden, or from the Secretary, at this office, Opera House block, Princess St., Kingston. I. J. WALKER, Secretary. Kingston, Aug. 9th, 1887.