

INSURANCE.

GLASGOW AND LONDON FIRE INSURANCE CO.

CAPITAL -- \$1,500,000.  
 THE GLASGOW AND LONDON INSURANCE COMPANY transacts the second largest business of all British Companies in Canada, deposit annually with the Canadian Government \$100 of assets for every \$100 of liability as calculated by the Government. PAYS ALL LOSSES EQUITABLY AND PROMPTLY without waiting the usual sixty days, resulting in the Company never but once having at end of any one year outstanding losses exceeding \$5 10/100.  
 W. G. BROWN, STURWART BROWNE,  
 Chief Inspector, Manager for Canada,  
 Toronto. Montreal.  
 J. T. WHITE, City Agent,  
 92 BRICK STREET.

CITIZENS' INSURANCE CO.

INCORPORATED 1864.  
 Capital Subscribed, -- \$1,009,800 00.  
 Government Deposit, -- 122,000 00.  
 Losses Paid, -- 3,000,000 00.  
 Claims promptly and equitably adjusted.  
 Loss by lightning covered whether fire ensues or not.

J. S. R. McCANN, Agent  
 OFFICE: AT POLSON'S DRUG STORE.

LIVERPOOL AND LONDON AND GLOBE FIRE AND LIFE INSURANCE COMPANY.

This Company is one of the best in the world. Its available funds amount to \$43,822,139. In addition to which is the unlimited liability of shareholders.  
 The yearly premiums for fire risks alone amount to \$6,447,880.  
 Insurance effected on Farm and City Property at the lowest possible rates.  
 Three year policies issued on private dwellings and farm buildings at low rates of premium.  
 Losses paid promptly.  
 THOMAS BRIGGS, Agent.

THE AETNA INSURANCE COMPANY, HARTFORD CONN.

Cash Capital, \$4,000,000.  
 Total Assets, January 1st, 1882, 8,902,372.90  
 Losses paid in 63 years, 53,400,000 00.  
 The leading Fire Insurance Company on the Continent. Its Annual Premium Receipts in Canada and the United States are larger than those of any other Company, and it has an unblemished record of 63 years.  
 JAMES SWIFT, Agent.

GUARDIAN ASSURANCE COMPANY.

Subscribed Capital, £2,000,000.  
 Total Invested Funds upwards of £3,901,000.  
 Total Income, £ 768,000.  
 Insurances against Loss by Fire accepted at the lowest current rates and claims settled without reference to the Board at London.  
 W. H. GODWIN, Agent for Kingston, BRITISH WHIG OFFICE.

MONEY TO LOAN. INSURANCE.

MONEY TO LOAN in large or small sums on farm or city property.  
 WANTED.—Persons having money to invest can always obtain first-class mortgages of the undersigned at six to seven per cent.  
 LONDON & LANCASHIRE FIRE INSURANCE COMPANY. Capital \$9,000,000. Premium income \$2,500,000. E. C. HILL, Real Estate Agent, Brock street, Market Square.

GROCERIES, LIQUORS.

ANY DOG

CAN MAKE BOTH ENDS MEET BY TAKING HIS TAIL IN HIS MOUTH.  
 WE TAKE OUR TALE IN OUR MOUTH TO SHOW YOU  
 HOW TO MAKE BOTH ENDS MEET  
 Our tale's true, and if you heed it, it will enrich you. Be economical and trade with

JAMES REDDEN, CHINA TEA STORE, PRINCESS STREET, FERGUSON'S BLOCK.

THE CELEBRATED COOK'S FRIEND BAKING POWDER IS A PURE FRUIT ACID POWDER.

It contains neither alum, lime, nor ammonia and may be used by the most delicate constitutions with perfect safety. Its great success arising from its being intrinsically THE BEST VALUE IN THE MARKET, as well as thoroughly adapted to the wants of the kitchen, has excited envious imitations of its name and appearance. Beware of such.  
 No addition to or variation from the simple name:  
 COOK'S FRIEND IS GENUINE.  
 Trade Mark on every package

JUST - RECEIVED

Two Car Loads of the Ontario Brewing and Malting Co's superior ALE AND PORTER  
 In Pints, Quarts and Small Kegs, which judges pronounce the finest in the city.

R. THOMPSON, No. 10 CLARENCE ST., OPPOSITE BRITISH AMERICAN HOTEL.

THE PEOPLE'S Up-Town Grocery.

S. W. DAY'S, PRINCESS STREET, ABOVE SYDENHAM-ST

A LARGE STOCK, BOTTOM PRICES, DESIRE TO PLEASE, MUST ATTRACT ATTENTION.

THE MANITOBA FLOUR, FEED AND SEED STORE, NO. 12 MARKET SQUARE.

Warehouse: Old Kingston and Pembroke.

FULL STOCKS OF FLOUR, OATMEAL, Mill Feed, Feed Grain, Seed Grain and Grass Seeds. CASH PAID for Buckwheat, Oats, Marrowfat Peas and Raw Furs.  
 TELEPHONE NO. 106.  
 W. F. BARRER, Commission Merchant.

BRISCO HOUSE, NAPANEE, ONTARIO C. A. CORNELL - PROP.

This House has just been re-modelled, and refitted, and no pains will be spared to secure the comfort of Guests.  
 Commodious Sample Rooms for Commercial Travellers.  
 The best yard and stables in town.  
 ONE DOLLAR PER DAY.

B. BARNEY & CO., 35 PRINCESS STREET, Kingston.

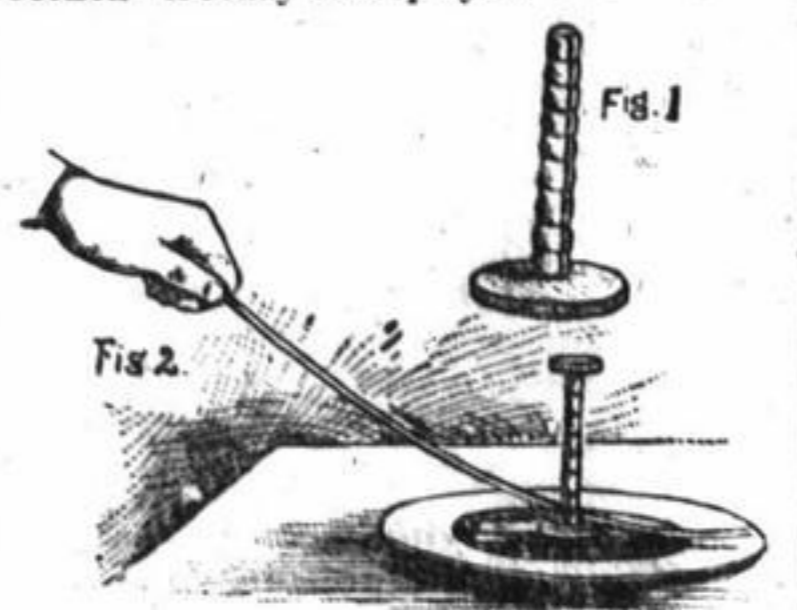
HIGHEST CASH PRICE PAID FOR OLD IRON (cast or wrought), Brass, Copper, Lead, Rope, Bones and Rags.

SCIENCE AND PROGRESS.

SUBJECTS OF INTEREST TO PROGRESSIVE WOMEN AND MEN.

A Scientific Recreation Known in France as the Game of Lobecheon, and Less Easy of Solution Than It Appears to Amateurs.

Roll a piece of flannel into a cylindrical form, tie it tightly together and sew it upon a circular piece of thick felt, as is illustrated in Fig. 1 in the cut. If properly made the roll of flannel will be stiff enough to hold a coin upon the top. Place the whole arrangement in a soup plate and the game of "lobecheon" is ready to be played.



SCIENTIFIC GAME OF LOBECHON.

The feat required to be performed is to take a flexible stick or twig in one's hand, and with it to push the "lobecheon," coin and all, out of the plate, without removing the stick from it. It is not necessary that the coin shall remain in its place, but only that it shall not fall into the plate. The problem seems extremely easy, but in fact it will take many trials before the "lobecheon" can be pushed out of the plate without leaving the coin behind. Popular Science News, from which the annexed cut is reproduced, tells how it can be done. Take the twig in the hand and press the end down upon the plate so as to bend it into an arc of a circle (see illustration). Move it till the summit of the arc rests against the angle formed by the flannel roll and the felt. Move it slowly sideways until the "lobecheon" reaches the edge of the plate. Then continue the side movement, but at the same time extend the arm quickly and push the twig from you. This movement will cause the roll to bend outwards, so that the coin falls outside the plate, and a second quick movement of the arm is all that is necessary to send the "lobecheon" after it.

Machine and Hand Made Watches.

The two rival methods of machine and hand work have both received great impetus in Switzerland during the past few years. Though American competition has put the Swiss on their mettle and obliged them to introduce improvements in all branches of the craft, there still remain two distinct methods of manufacture. The French speaking population are generally bound to the hand system, and all their progress has been along the line of perfecting the watchmaker, while, to a great extent, the American machine system has been adopted by the German speaking cantons. From a general point of view, says Jeweler's Circular, it must be admitted that while machinery has vastly cheapened the cost of production, and at the same time preserved a good degree of accuracy in the essential qualities of a timepiece, the part the skilled watchmaker plays in the perfecting of fine watches has not and probably cannot be filled by any labor saving device. Both methods have produced good results; the one by affording a serviceable article at a low price, and the other by attaining to a grade of excellence nearly, if not quite, commensurate with the higher price a more expensive process entails.

Oil of Sassafras.

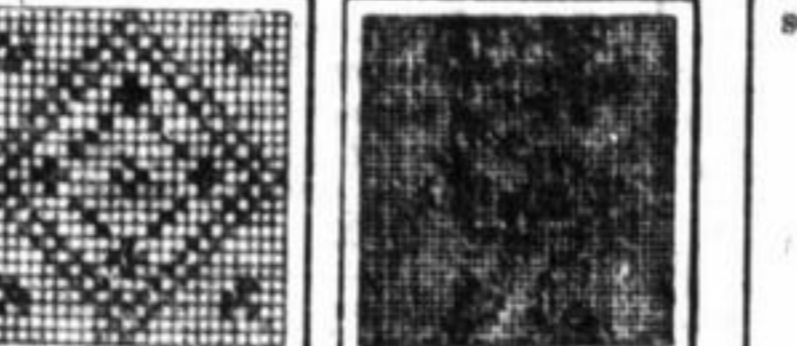
The manufacture of the oil of sassafras is becoming an important industry in some sections, and especially in the southern states, where this tree is common. Only the roots are used, these are chopped up into small pieces by a machine constructed for the purpose, the oil being then distilled from the chips by the aid of steam. About one gallon of the oil, weighing nine pounds, is obtained from 1,000 pounds of the chips. The uses for which the oil of sassafras can be employed are numerous and varied. It is a favorite perfume for soaps and candies; it is used as a solvent for different gums, and as a liniment. It is also very largely employed in the manufacture of several popular proprietary medicines.

Origin of Fish in Isolated Ponds.

A Boston correspondent in Science says on this much vexed subject: "Nothing seems simpler than that the birds, alighting on the edge of first one pond, then another, should carry on their feet the eggs, larvae, or whatever it may be, of one to the other. In digging wells in a quite desert region in Arizona, many miles from other wells, I was at first surprised to find them peopled after a short time with animals (frogs, if I forget not) which could not possibly have hopped or crawled from the nearest water, across the burning sand in mid-summer, with the thermometer rising above 115 degs. F. But I soon saw the above easy explanation."

Producing Designs on Wire Cloth.

An experiment showing a phase of capillarity is illustrated, by the annexed cuts, re-engraved from Scientific American. This experiment, explains a writer in the journal quoted, was originally intended for illustrating tapestry and other designs formed of small squares, in colors, upon the screen; but it has another practical application, which is capable of considerable expansion. For projection, a piece of brass wire cloth, of any desired mesh, say from 12 to 20 to the inch, is mounted in a metallic frame to adapt it to the slide holder of the lantern, and the wire cloth is coated lightly with lacquer and allowed to dry.



DESIGNS ON WIRE CLOTH.

The slide thus prepared is placed in the lantern and focused. The required design may now be traced by means of a small camel's hair brush, colored inks or aqueous solutions of aniline dyes being used. The small squares of the wire cloth are filled with the colored liquid, and show as colored squares upon the screen. Different colors may be placed in juxtaposition without liability to mixing, and a design traced without special care will appear regular, as the rectangular apertures of the wire cloth control the different parts of the design. The colored liquid squares are retained in the meshes of the wire cloth by capillarity. A damp sponge will remove the color, so that the experiment may be repeated as often as desired. In this experiment the colored squares have the appearance of gems. These designs may be made permanent by employing solutions of colored gelatine.

BLAINE'S WASHINGTON HOME.

A Historical Mansion Where Traditions Still Lurk.

More than fifty years ago, Commodore Rogers, of the navy, built a three story mansion of red brick in Washington. As regards design nothing could be plainer. The only principle of architecture about it is the laying of one brick plumb upon another. When the commodore died his big mansion became a boarding house. Later it was used as a club, and Barton Key used to sit at an upper window and watch for the waving of a handkerchief from the window of the Sickle's house across Lafayette square. When the handkerchief was waved, Key understood that Sickle had gone out, and that he could leave the club and meet the faithless wife. One day, having seen the signal, Key left the club to meet Mrs. Sickle, but the husband was waiting for him across the street, and upon seeing him first, fatally wounding him. Key was carried back to the club house, where he died. Two years later the house was rented by William H. Seward, who lived there for eight years, while secretary of state under Lincoln and Johnson. The convenient location of the house was probably his reason for renting it. It was in one of the upper chambers of this mansion that Secretary Seward was lying, slowly recovering from a severe accident, when Payne, the fellow conspirator of Wilkes Booth, entered the house on a pretext of delivering an important message. The would be assassin rushed into the room, sprang at the secretary and struck at his throat, but the blade of the knife glanced upon some of the surgical appliances with which Mr. Seward's jaw was being held in place while healing, and only wounded him. Leaving his deadly work unfinished, Payne started for the door, meeting Mr. Seward's son, with whom he had a struggle, escaping only after using his knife again. Mr. Seward and his son lay for weeks in their

rooms before they recovered. Mr. Seward's only daughter, who had witnessed the assault, and had given the alarm, received such a nervous shock that she gradually lost health and died. The next occupant of the house was Gen. Bellinap, Grant's secretary of war after Rawlins died, and for a season it was the special headquarters of the Grant regime. After the death of Mrs. Bellinap the general gave up the mansion, and once more it became a boarding house. But the story got out that it was haunted and ill fated, and, notwithstanding the fine location, with the park in front and the White House in full view to the south, people would not take the rooms. For a while the old mansion stood unoccupied. There was some talk of remodeling it with a mansard roof and other modern improvements. Finally the government took the mansion, and for a dozen years used it for the offices of the commissary general while the new war department building was going up. Some months ago the commissary general moved to the new building, and since then the house has been an elephant on the agent's hands. Mr. James G. Blaine is the latest one to take the mansion, having rented it for a term of years at very low rent. Thousands of dollars will be required to put the mansion in shape, but for a cabinet house the location is beyond comparison. Mr. Blaine will live in the residence, which is within the smallest radius from the White House. If he and his family are not superstitious there seems no reason why the mansion should not prove satisfactory in every respect.



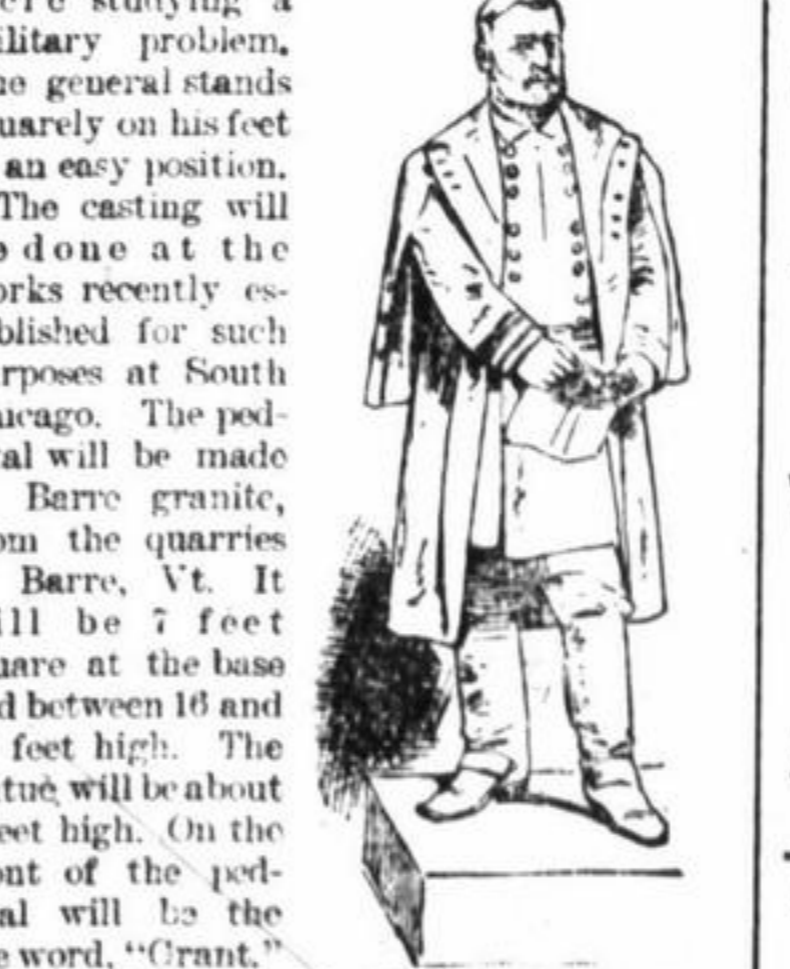
THE OLD SEWARD MANSION.

Leavenworth's Grant Statue.

A cut is here given, taken from a photograph of a model of a statue to be erected to Gen. Grant at Leavenworth, Kan. The artist, Mr. Lorado Taft, of Chicago, has depicted the general as he would appear in winter in the field. He is attired in uniform with an overcoat, and holds in his hand a chart. The expression on the face is grave and thoughtful, as though the great commander were studying a military problem. The general stands squarely on his feet in an easy position. The casting will be done at the works recently established for such purposes at South Chicago. The pedestal will be made of Barre granite, from the quarries at Barre, Vt. It will be 7 feet square at the base and between 16 and 17 feet high. The statue will be about 9 feet high. On the front of the pedestal will be the one word, "Grant." There will also be LEAVENWORTH STATUE, a bronze panel, showing some incident in Grant's life, in relief. The statue will occupy a triangular lot, with three granite entrances.

John C. Klein.

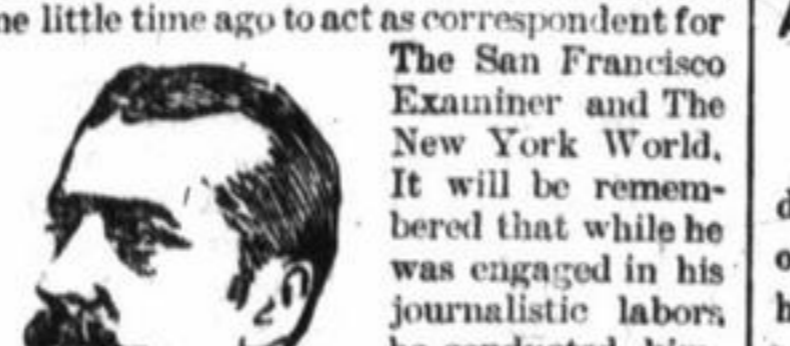
Here is a portrait of John C. Klein, the American who went to the Samoan islands some little time ago to act as correspondent for the San Francisco Examiner and The New York World. It will be remembered that while he was engaged in his journalistic labors he conducted himself in such a way as to bring down upon his devoted head the charge that he was no friend of the Germans—that, in fact, he helped the natives in their resistance. Mr. Klein denies all this, of course, and has returned to America. It having been rumored that the German government would demand Klein's punishment for his alleged evil conduct, The New York World has uttered a valiant "def" at Bismarck, assuring him that Klein would be protected, and threatening, if the demand for the correspondent's punishment is repeated, to urge upon him the necessity of self defense—in the slang formula, "Johnny, gitcher gun!" However, there seems to be no probability now that Germany's demand will be pressed.



JOHN C. KLEIN.

JOHN C. KLEIN.

JOHN C. KLEIN.



JOHN C. KLEIN.

JOHN C. KLEIN.

COME AND SEE

OUR GRAND DISPLAY OF NEW HATS AND CAPS.

Latest Styles and Lowest Prices.

Cousineau, Quinn & Corrigan,

SUCCESSORS TO F. X. COUSINEAU & CO.

OUR NEW EMBROIDERIES.

They have arrived and are sure to please. More attractive than any advertising can make them. We won't try to touch them up with words. Come and see them. They speak for themselves.

A. J. McMAHON, 102 Princess-st.

DRESS GOODS.

We invite inspection of the largest stock of Dress Materials for spring we have ever shown.

All the New Colors, All the New Materials, at Prices always the Lowest

In Both Double and Single Width, and a wholesale stock to select from at

MURRAY & TAYLOR'S.

BEAUTIFUL SHADES IN NEW SPRING GOODS.

SPENCE & CRUMLEY

Have Opened This Week Their Special Importations for Spring of Fine Wool Henriettas, Robed Dress Goods, etc. As these goods cannot be repeated, ladies should see them at once and make their selections before the range of colors are broken.

The New Colors—Saturnelle, Copper, Mahogany, Old Rose, Crushed Strawberry, Chocolate, Russian Blue, Nile and Gray Greens, Electric.

SPENCE & CRUMLEY'S, 132 and 134 Princess Street.

The Manufacturers' Life Insurance Co.

PRESIDENT,  
 Sir John A. Macdonald.  
 VICE-PRESIDENTS,  
 George Gooderham, Wm. Bell.  
 SECRETARY-TREASURER,  
 J. L. Kerr.

Business Written and Policies Issued over \$7,000,000.  
 Authorized Capital, \$2,000,000.  
 Subscribed Capital, \$621,300.  
 Amount Paid Up, \$127,320.  
 The Surplus on Policy Holders' Account, \$584,402.



JOSEPH F. SWIFT, Agent, Kingston.

GENTLEMEN

Who like something nice in the way of footwear should see our

American Goods.

They are neat, stylish and easy fitting. You would wear no other after wearing one pair.

HAINES & LOCKETT.

NOTICE.

A Great Many Ask Why It Is We Do the Largest Business in the City in Our Line?

SIMPLY BECAUSE WE BUY IN LARGER QUANTITIES, buy for cash, save the discount and give the purchaser the benefit. In the undertaking, as every one knows, the one who does the largest business can do it the cheapest. It requires the same number of horses, hearses, carriages, etc., to do 50 funerals for one year as it does 350. We also do our own engraving which is a great saving. Attend personally to every funeral and with the long experience which we have had can attend to funerals better and cheaper than any one in the business.

JAMES REID, 254 and 256 Princess Street.

R. REID, Manager.

NEW BLACK DRESS GOODS AT WALDRON'S.

NEW BLACK HENRIETTA, all wool, 70c, 75c, 90c, \$1.  
 NEW BLACK SILK WARP HENRIETTA, \$1, \$1.10, \$1.25, \$1.50, \$1.75.  
 NEW BLACK CASHMERE, all wool, 40c, 50c, 60c, 75c, 80c.  
 NEW BLACK FRENCH MERINO, 50c, 60c, 75c, 90c.  
 NEW BLACK INDIA CASHMERE, 40c, 45c, 50c, 60c.  
 NEW BLACK ARMURE CLOTH, all wool, 40c and 50c.  
 NEW BLACK CHEMETS CASHMERE, 25c, 30c, 35c.  
 NEW BLACK STRIPED FRENCH FANCIES, 60c, 70, 75c.  
 NEW BLACK CRAPES, Courland's Best.  
 NEW BLACK VEILINGS, Black Border Handkerchiefs and Black Frillings.