

### SNAIL DRIVERS BAD AS SPEEDING FIENDS

#### A United States Judge Condemns the Habit of Too Slow Driving.

Los Angeles—Judge W. D. McConnell, now handling traffic cases in Los Angeles courts, has started a campaign to rid the highways of the "snail driver."

"There is no excuse for the speeder, but there is also no excuse for the man who congests traffic by hogging the centre of the road, while snail-driving ten or fifteen miles an hour," he says. "I don't want the fast driver to go faster, but I do want the slow driver to go faster."

Judge McConnell pointed out that failure to drive on the right-hand side of the road is a violation of the law, and that traffic officers are now bringing in drivers who poke along in the centre of the road, causing other drivers to either pass to the right or swing over into the left-hand side of the road in order to get by.

The judge who drives a great deal himself said that the practice of driving at a snail's pace on country highways where a speed of thirty-five miles an hour is legal not only congests traffic, but many indirectly cause accidents.

"The driver to the rear, anxious

### 1904 Reo and its Original Owner Engage in an Interesting Reunion in San Francisco



M. Detling, prosperous proprietor of the Del Monte Creamery, walked into the San Francisco sales rooms of the Reo Motor Car Company of California a short time ago. With him were his daughter, Mrs. Elmo Buttle, and her two sons, boys of grammar school age.

The attention of the four, and especially of Mr. Detling, was drawn to an interesting display on the sales floor made up of an automobile of obviously old-fashioned design standing beside a sophisticated

looking sedan, smoothly characteristic of the 1926 motor car perfection.

But Mr. Detling was strangely drawn to the old-fashioned car which had first attracted his gaze. Strolling over to it, he began a closer examination of it, interest increasing as details of its construction suggested something which he was more than ordinarily familiar.

The climax occurred when, upon reading the serial and motor numbers, Mr. Detling discovered that the car was a 1904 Reo that he, himself, had owned 22 years before. Mrs. Buttle remembered the car

well. As a child she had ridden through the streets of San Francisco with her father as he extended to his rapidly growing business. In fact, the "rattle seat" at the back had been built for her to occupy when there were other passengers and she could not ride in front with her father.

Mr. Detling was pleased to hear that his first car runs now just as well as it ever did. For his part, he reported that he is now driving his ninth Reo, having been everlastingly won over to Reos by his first experience as an owner.

**That First "Choke Morning" is when damage starts**

Don't "over-choke" your motor! Experts agree it's the cause of 50 to 75% of all damage to motors.

**PINES AUTOMATIC WINTERFRONT**

shortens the "warming-up" period to seconds—removes the necessity for excessive "choking"—prevents excessive crankcase dilution, corrosion, fouled spark plugs, rapid cylinder wear that results from cold weather operation.

Models for all cars. Priced \$29.25 to \$39.50. Special models for Ford, Chevrolet and Dodge. Priced \$19.50, \$22.95, \$25.95

At Any Garage, Accessory or Auto Dealer

District Distributor  
**Edwin Chown & Son**  
248 Bagot Street. Telephone 241.

to get ahead so that he can resume his normal speed, often takes chances in passing before an approaching car," he said. "Operators should drive at a reasonable speed unless there is plenty of room for those behind them to pass."

Drivers intending to make a left-hand turn should get into the left-hand lane, just before reaching an intersection, and then hold the left arm rigid, in a horizontal position, until the turn has been made. "Drivers intending to make a right-hand turn should use the lane nearest the curb, and hold the left arm up, in a perpendicular position until the turn is completed."

"Drivers going straight through should keep out of the right-hand lane. In stopping or slowing down, drivers should extend the left hand towards the pavement."

**On Car Comfort.**

When going over rough spots in the road it will ease the shock to feet gas with the hand control while gently applying the brakes. The idea is that under this arrangement the car pulls when going "into the holes" and when drawing "out of them," yet without coming into them with a jolt. By keeping the speed of the car constant the jolts are reduced to a minimum.

**Pointers on Lubrication.**

Many car owners probably will be startled to know that the poor riding qualities of their machines are the result of lubricating the springs too generously. It will doubtless shock another set of motorists to learn that lack of lubrication of springs is wasting engine power.

**PRICE**

Only large production could build Champion superior quality at such low prices as 80 and 90 cents.



Champion X—exclusively for Fords—packed in the Red Box 60¢  
Champion— for cars other than Fords—packed in the Blue Box 90¢

**CHAMPION**  
Dependable for Every Engine  
A Canadian-made Product  
Windsor, Ont.

**BRITISH MODELS GET EXPORT PREFERENCE**

The Old Country Motor Cycles Are Very Popular Abroad.

The success of British motor cycles has undoubtedly been largely influenced by their victories in races and trials throughout the world. I read in Motor Cycle that among events recently won by British machines are the French grand prix, the Italian grand prix, the Australian T.T., the French twenty-four-hour road race, and the German solitude road race. In the Austrian T.T., the winning machine was a 3.49 overhead valve B.S.A. similar to that which recently won the three-mile solo championship of Western Australia. In the Czechoslovakian 1,000 kilometre reliability trial, ten B.S.A.'s were entered and ten finished without losing a mark, gaining ten gold medals and the team prize.

Even in those cases in which foreign machines are successful, one frequently finds that the winning cycles are fitted with British engines. Thus the winner of the Donzele Hill climb in Switzerland rode a machine fitted with a Villiers 122 c.c. engine, which attained this success, despite its small dimensions, on a climb having a gradient in places of about 1 in 3. In France a foreign machine fitted with a 172 c.c. Villiers engine has lowered its own world's record for its class for the standing kilometre.

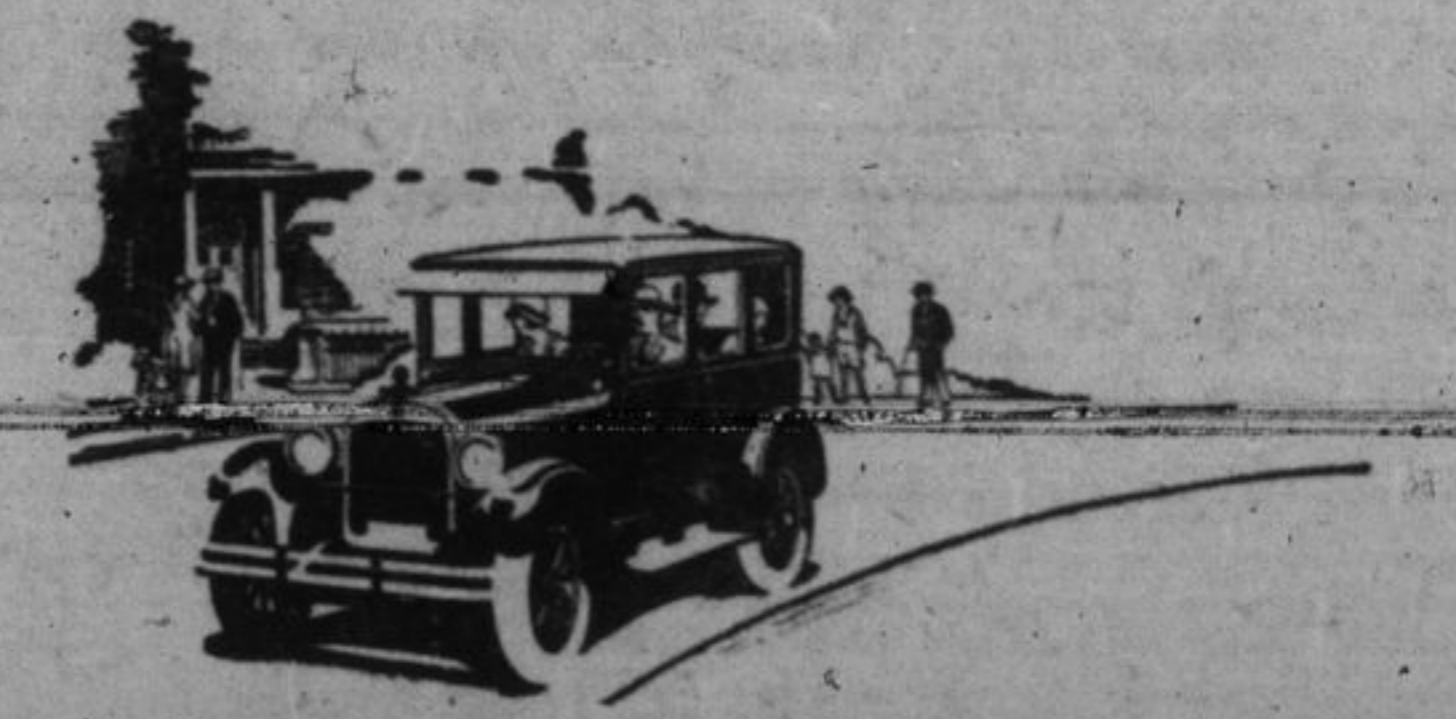
In British motor cycling events the foreigner nowadays seldom makes anything of a show. Particularly in reliability trials, he is up against a very stiff proposition. A fair example of the sort of thing he may expect from his leading British competitors is to be found in the fact that in the 1925 Edinburgh run sixteen "Matchless" machines started and obtained fifteen gold medals. In the London to Land's End run, seventeen "Matchless" machines were entered and seventeen finished, gaining nine gold and eight silver medals and a special prize for silence.

**Breaking-in Used Car.**  
With the possible exception of automobiles which have been employed as demonstrators, the wares of the used car must require special attention until they are properly seasoned and acclimated to their new idea in car ownership, but the need for better service and care for used cars is as old as the first trade-in. Because drivers have their peculiarities, there is no reason to expect that because a car has been a success in the hands of the original owner it will be equally good in the hands of another. Breaking in a used car carefully is as essential as the same treatment in a new machine.

**Ask the Mechanic Why.**  
Towing a car in order to limber up the motor after new bearings have been installed may or may not indicate poor workmanship. When bearings are not made to fit just right one way to wear them in is to tighten them up and tow the car around. If the bearings are properly wrapped to fit, the towing should not be necessary. On the other hand, the repairer may want to tow the car to prevent burring out the bearings by accidental racing of the engine when first turning it over. Make sure just why the mechanic is towing the car.

**Gas Price Probe.**  
The Federal Trade Commission has started an extensive investigation of charges that big oil companies have raised the price of gasoline without due cause at a cost of many millions to motorists.

**Provide Parking.**  
Ninety retail stores in Boston, Mass., give free parking in central garages to customers during the morning hours. One garage used for this purpose has room for 1,500 cars.



## An Important List of Improvements

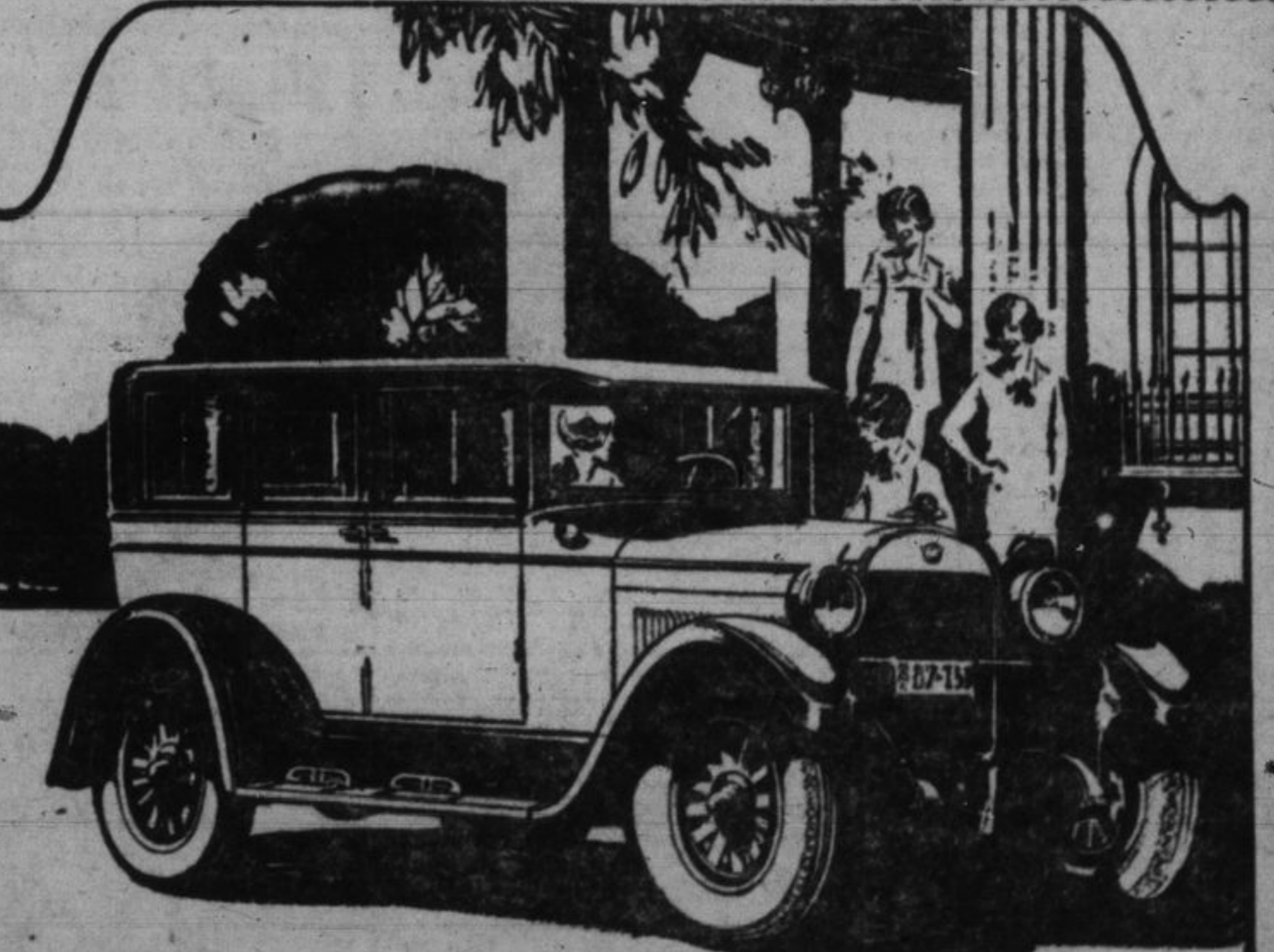
Following a year of unprecedented engineering progress, Dodge Brothers announce another important list of improvements for their complete line of motor cars.

No one who contemplates the purchase of a car should fail to investigate the impressive nature and scope of these improvements at the earliest opportunity.

**M. OBERNDORFFER**  
124 CLARENCE STREET  
**DODGE BROTHERS**  
MOTOR CARS  
MADE IN CANADA

**The Duty of Piston Rings.**  
When an engine lacks power, when the compression is poor, when it pumps oil and uses too much fuel, it is probable that the rings are old and do not fit properly. A piston ring is supposed to pack the cylinder so that the gas does not leak downward and oil upward. In order to be an ideal device, it must do this without exerting too much pressure against the cylinder wall, and the pressure must be evenly distributed all around. The ring must fit the cylinder perfectly; it must fit its grooves in the piston so that it will be neither too tight nor too loose.

**Variety That Is Costly.**  
In buying a used car it should be borne in mind that the care the original owner gives a machine may be of little value to the next owner. One man may be very careful to keep the water pump lubricated and the gas line free of sediment, only to overlook such matters as keeping the universal joints properly greased and the spring leaves free of rust. When the new owner gets down to business these matters quickly come to light.



### Reo "Six" Special Sedan

#### Superfine Quality - Moderately Priced

Distinguished of line and distinctive of finish, the Reo Special Sedan provides motor car excellence without exacting a high-price penalty. Rare beauty combines with established mechanical goodness; richness of furnishing is coupled with completeness of appointments for ultra comfort.

There's a sweeping silhouette—a smart two-tone color treatment—

a nicked radiator topped with a winged cap and motometer—natural wood wheels with big balloon tires—aluminum step plates—genuine mohair upholstery—silken window shades and a host of other fittings included in Reo's fair price.

It's roomy—and easy riding—and high-powered—and a safe car to drive.

**BOYD'S GARAGE LIMITED,**  
129 Brock and 231 Bagot Sts.  
Phone 1000  
**REO MOTOR CAR COMPANY OF CANADA, LIMITED**  
Windsor, Ontario

## TRYING to compare the Chrysler "60" with an ordinary type of Six is like trying to compare two totally different things.

There can be no comparative measure of value, for instance, between the Chrysler "60", with its sixty-mile-and-more-per-hour capacity, and another car offering much less.

Just as sharply defined is the difference in the comfort of these sixty Chrysler-miles and the lesser speed and the less easeful speed of the other.

The vital factor which makes greater value in Chrysler "60" has its source in the one-thing-which-cannot-be-

copied—Chrysler creative engineering and precision manufacturing as expressed in the plan of Standardized Quality.

In the Chrysler "60" it expresses itself especially in qualities which stand out so sharply that you cannot mistake them—the most beautiful riding and handling qualities you have ever experienced, a most amazing agility, and a gushing wealth of power that never halts or hesitates for a single second.

**THE COACH**

**\$1700**

F. O. B. WINDSOR

Chrysler performance, long life and quality. Roomy, luxurious bodies with beautiful mohair upholstery in enclosed models. Attractive new color harmonies. Sixty miles and more, per hour. Lightning acceleration. Amazing economy of 26 miles to the gallon. Characteristic Chrysler smartness and beauty. Phenomenal riding ease. Chrysler four-wheel hydraulic brakes. Oil-filter and air-cleaner. Full pressure lubrication. Seven-bearing crankshaft. Impulse neutralizer. Manifold heat control. Road levelers, front and rear. The new lighter Six Chrysler "60" is the lowest-priced Six ever built which combines all these fine car features.

**CHRYSLER "60"**

CHRYSLER "60"—Touring Car, \$1485; Roadster, \$1550; Cab Coupe, \$1605; Coach, \$1700; Sedan, \$1835

All prices f. o. b. Windsor, Ontario (weight only) to be added, including all taxes, bumpers front and rear, spare tire, three-ways and tank full of gasoline

Chrysler Model Numbers Mean Miles Per Hour

**CLARKE BROS.**  
731 King Street Telephone 2357f.