

In the Automobile World

EXPECT ACCIDENT IN TWENTY YEARS

This is the Average Toll, Experts Tell the Auto Drivers.

Washington, May 7.—The average automobile driver may expect to have a serious accident about once in 20 years. But 1 or 2 per cent. of the drivers should thank their special guardian angels if they don't smash a car or run down a pedestrian every six months, or oftener.

This is the way drivers classify under to-day's standards and conditions, according to Dr. Walter V. Bingham of New York, director of the Personnel Research Federation. One of the large problems of highway safety, he says, is to recognize incorrigibles before they do any

damage, and to banish them from the steering wheel. Accident "repeaters" cannot be picked out by outward physical appearance, psychologists agree. There probably are just as many blonds among them as brunets. They have no distinctive facial characteristics, or other earmarks.

"How, then, can you determine who will be predisposed to accidents before the subject begins driving?" The question was put up to Dr. Bingham, who was chairman of the committee on causes of accidents reporting here at Secretary Hoover's recent safety conference, and also to Dr. F. A. Moss, professor of psychology at George Washington University and secretary of the same committee.

Drivers Are Tested. "There are personal factors which can be revealed by psychology laboratory test of the applicant for a driver's license," answers Dr. Bingham. "You can determine exactly

how long it takes to act after an emergency is perceived.

"The average driver, we have found, requires about one-half a second in emergency to take his foot off the accelerator and put it on the brake. This means the car traveling at 30 miles an hour would go about 22 feet before the driver acted.

"Some types of nervous disorders unfit a person to drive, while others have no such effect. One eminent psychologist says that a person suffering from acute melancholia is one of the safest of all drivers, because he takes extreme precautions against accidents."

D. Moss has made extensive tests into the personal factors which cause accidents. One of his tests was a simple device of "What's wrong with this picture" to determine a person's judgment and perception of danger. He has applied the standard intelligence test to drivers, also.

You Needn't Be "Smart." A high grade of general intelligence is not necessary to be a good driver, he demonstrated, but a sub-normal mentality makes a dangerous driver. He found taxicab chauffeurs with the minds of seven-year-old children, and they were having trouble.

"A small number of people become chilled and quite helpless from fear when confronted by sudden emergency," says Dr. Moss. "We have located them in tests on students in the university.

"It is possible, also, to judge one's eye and hand co-ordination by tests. This is important in passing cars and driving up to curves. These tests are quick and practical and will locate dangerous traits.

"Women are no more dangerous as drivers than men, given equal practice. They have no distinctive psychological tendency to accidents. The influence of fatigue on automobile accidents, according to these authorities, is marked. A tabulation of 28,000 traffic accidents in New York state last year showed that more than twice as many accidents occurred during the evening rush hour as in the morning rush hour.

ONE-DAY TRAFFIC IN THE ANDES MOUNTAINS.

Motorists well acquainted with one-way streets in the larger cities should have little trouble getting accustomed to the one-way, one-day roads in the Andes Mountains. Roads in these Peruvian mountains are so narrow and dangerous that highway regulations permit the use of them in one direction only during specified days. Traffic originating in the upper reaches of the Andes is permitted to move down only on Tuesday, Thursday and Saturday of each week. Up-moving traffic from the lower districts is allowed the use of the roads on the other days.

Railroads Use Buses. Two Colorado railroad companies which have seen a considerable amount of their business go to competing bus lines in the same territory have decided to run buses in competition to the existing bus lines. At first the railroads were bitterly opposed to bus travel but now they have decided to meet the competition at its own game.

Focus Headlights. With the season approaching when many motorists are again seeking the open road, special attention should be given to automobile headlights. Headlights out of focus not only make night driving difficult but endanger the lives of other motorists.

Auto Industry Grows. Canada's automobile business continues to become more valuable to that country. There has been a steady increase in the number of cars manufactured. These machines are for both domestic and export purposes.

Heavy Bridge Traffic. The Queensboro bridge in New York accommodates 35,000 vehicles daily. According to the steady increase in the number of vehicles which go over this bridge, it is believed that the count will soon be 40,000.

Berlin Traffic Plan. Traffic methods in Berlin, which are modeled on American lines, are to be improved by installing turnstiles in the subway, according to reports of the information service of the German Travel Recruiting Bureau.

Makes Huge Tires. The largest tires yet produced for commercial purposes are now being manufactured in England for the new giant air liners. The tire is seven and one-half feet in diameter and weighs about 250 pounds.

Improving Camp Sites. Many cities are realizing the need of modern camp sites and are either remodeling those which they have or building new ones to furnish tourists with all possible conveniences.

Stop Traffic For King. Two automobiles of King George and Queen Mary of England are equipped with blue lights so that traffic officers will know the car and give it the right-of-way at all times.

Warns Children. The Bavarian Automobile Club has followed America's example in training children to practice safety on the streets. Postcards are issued to the children illustrating traffic dangers.

NEW JERSEY HAS STRICT AUTO LAWS

The New Jersey state legislature passed nearly a half hundred bills relating in some way to the operation of automobiles in the state, particularly strict enforcement of traffic laws.

Two of these were directed against drunken drivers and were framed so as to eliminate all technicalities which would prevent action of the courts against offenders.

One of these bills eliminates the provision calling for a summary arraignment of offenders and permits their prosecution at any time within 30 days. In cases of first offense, magistrates are permitted to impose a fine of \$250 or a jail term. For the second or other offenses of the same law a jail sentence is mandatory.

For the guidance of magistrates, the legislature adopted a bill defining reckless driving as "the driving of a motor vehicle in any manner which unnecessarily interferes with the free and proper use of the public highway, or in any manner which endangers the life or limb or property of any person."

AMERICANS NEED NO PASS-PORTS IN CANADA

American citizens need no passports to tour in Canada. If the automobile is to remain in Canada less than 30 days a touring permit is obtainable from the Canadian customs officers at the port of entry, allowing the car to be run in the Dominion for one month without securing a customs bond or depositing duty.

Cross-Mark Autos.

Many leading automobile manufacturers are cross-indexing and marking the autos they manufacture to make them thief-proof. With special markings, it is usually simple to identify automobiles. This is expected to discourage the practice of stealing cars.

A Digest of the BEST in WIT

By Courtesy of ZIFFS MAGAZINE

Aw, Gwan! Joaquin Miller, the "Poet of the Sierras," wrote an even worse hand than Horace Greeley. Miller was once invited to be the guest of honor at a literary society's banquet in Boston, and the Boston committee could not tell whether his reply was an acceptance or a rejection. So a second note was sent to him saying:

"MAKE A CROSS ON A SHEET OF PAPER IF YOU ARE COMING AND A CIRCLE IF YOU ARE NOT, AND MAIL TO US. NO WRITING."

Miller duly sent on the sheet of paper marked as requested, but the committee was left up a tree. They didn't know whether the mark was a cross or a circle!

Certainly! A clumsy young fellow named Babbit. Had a girl, a timid young rabbit. But he kissed her so rough. She exclaimed: "Quit that stuff; You should take a kiss nice—and not grabbit!"

There's many exciting dates that never get into history.

Now, Now! "What's coming off in here?" Asked the Prof. sticking his head in the room where the students were playing strip poker.

ECONOMY

Champion X contributes greatly to the economical maintenance of Ford cars because they cost less and render better service. Replaced once a year they keep the Ford engine at performance peak, and actually save in gas and oil used. Champion has been standard Ford equipment for 15 years.

CHAMPION Dependable for Every Engine A Canadian-made Product Windsor, Ont.



Champion X—exclusively for Fords—packed in the Red Box 80¢

THIRD in the World

and Sales still mounting

During the first three months of 1926 Dodge Brothers, Inc., and their subsidiaries built and sold more motor vehicles than any other manufacturer in the world, except Ford and Chevrolet.

71,189 retail deliveries were made by Dodge Brothers Dealers in the United States and Canada between January second and April third. This represents a gain of 37 per cent over the same period last year and 69 per cent over the first quarter of 1924!

Third largest in the world! And sales CONTINUING to mount week after week to new record breaking levels.

In fact, during the week ending April 24th retail sales reached the remarkable total of 9,566—the greatest single week in Dodge Brothers history!

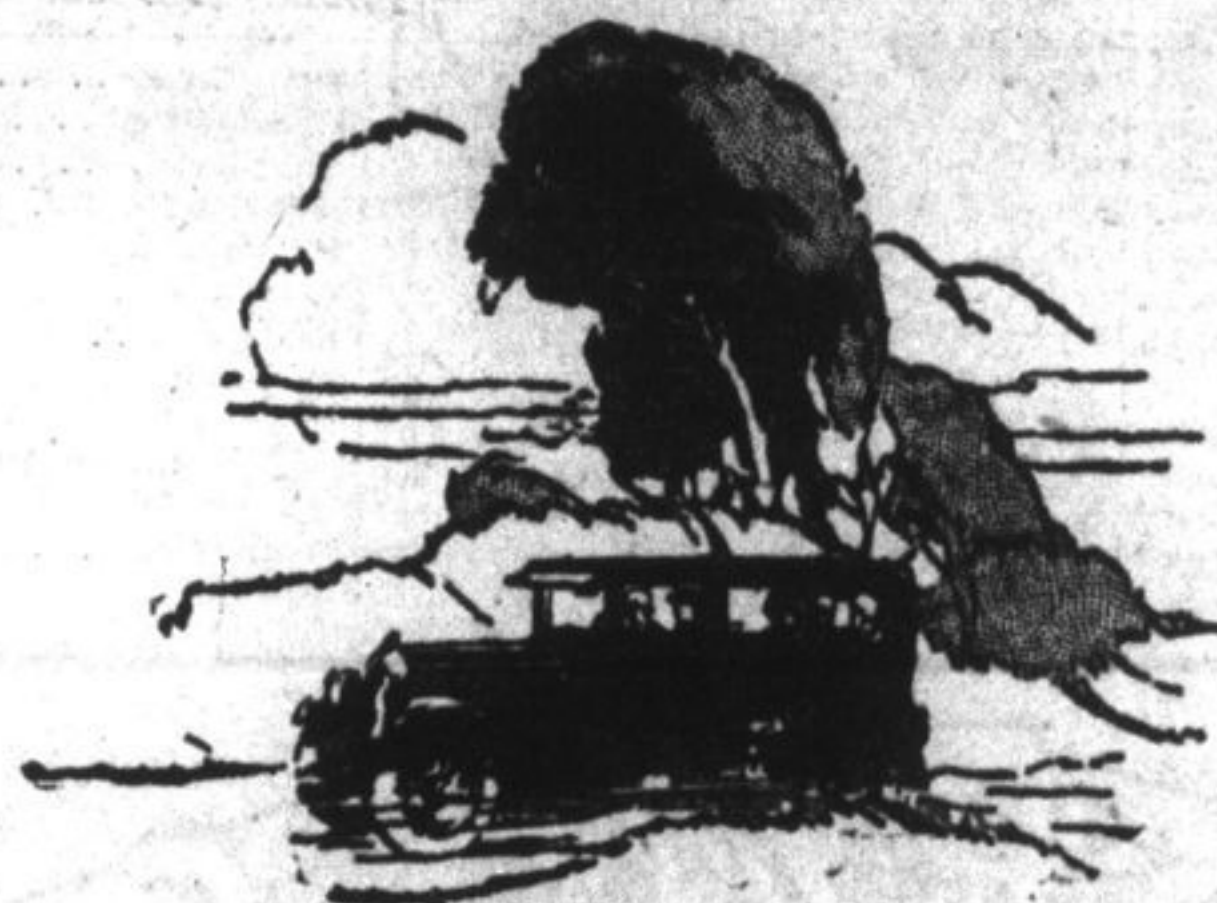
These figures are all the more significant when you realize that the gain of the industry as a whole over last year is only 12 per cent.

There could be no more convincing evidence that today's product is regarded as better than ever before and that the present prices make it the most impressive value Dodge Brothers (Canada) Limited have ever offered.

Touring Car \$1030 Coupe - \$1095
Roadster - 1030 Sedan - 1160
f. o. b. Toronto, taxes to be added

M. OBERNDORFFER
124 CLARENCE STREET

DODGE BROTHERS
MOTOR CARS
MADE IN CANADA



Chrysler "70" Royal Sedan

Unequaled Results With Unexampled Economy

The trend today is toward the Chrysler "70" because the Chrysler "70" is in line with the national trend toward genuine economy.

It satisfies the growing desire to make the dollar go farther—to make it buy more comfort and enjoyment.

The plain fact is that the Chrysler "70" affords all of the roadability, speed, and ease of riding of bulky, cumbersome cars; and to those adds its own inherent advantages.

It is far less costly to buy and to keep. It gives twice the gasoline and oil mileage of many cars which it equals and surpasses in speed.

But Chrysler superiority doesn't stop with a phenomenal performance which permits the maintenance of accurate personal schedules.

It goes deep into materials and manufacturing. No car is built of finer materials; no car is built to finer standards.

The result is that Chrysler "70" stands up without constant mechanical attention in a way that arouses the highest praise of men and women who are used to the very costliest cars.

Let us show you the Chrysler "70". Ride in it, drive it. That is the only way you can fully appreciate its remarkable qualities.

CLARK BROS.
371 King Street. Telephone 2357f.

CHRYSLER "70"

CHRYSLER "70"—20 miles per hour to 25 miles in 7 seconds—48 horse power—hydraulic four-wheel brakes.
CHRYSLER "80"—25 miles per hour—20 miles in the gallon—20 to 25 miles in 8 seconds.
CHRYSLER IMPERIAL "40"—40 miles per hour—can hold—4000 lbs. for 7 passengers—48 horse power—Standard per hour. All models equipped with full ball-bearing tires.



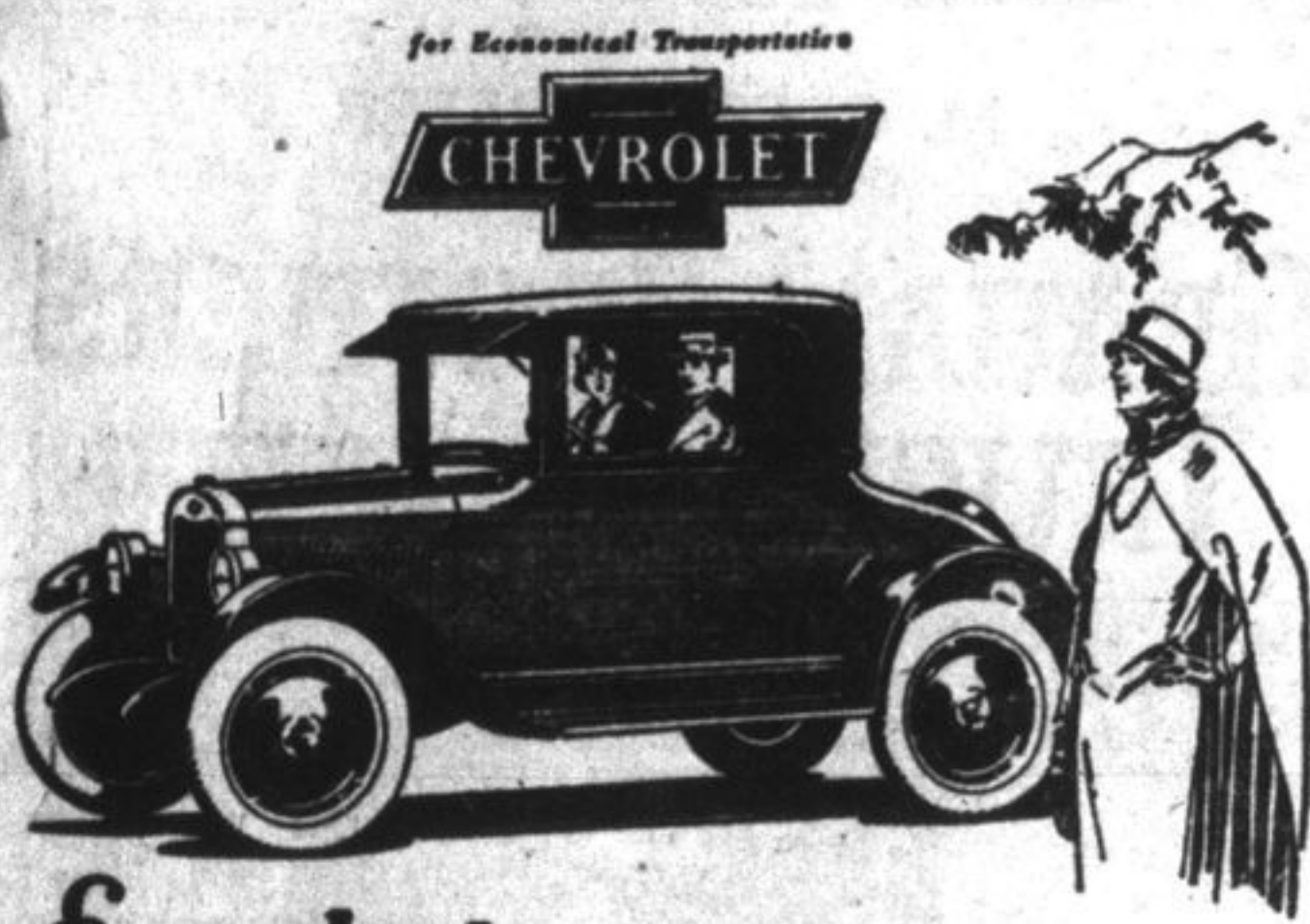
We are pleased to attend to the convenience of transportation. Ask about Chrysler's attractive plan. Chrysler dealers and superior Chrysler service everywhere.
All Chrysler models are protected against theft by the Federal patented car engine locking system, pioneered by and exclusive with Chrysler, which cannot be counterfeited and cannot be copied or removed without conclusive evidence of tampering.

More Motor Buses. There were nearly 70,000 motor buses in use in the United States at the beginning of 1926. This is an increase of 35 per cent. over the number of buses in use at the beginning of 1925.

It is well to test the brake every day to see which of the two rear wheels is the more inclined to lock and slide.

A good grade of oil not only prevents carbon deposit, but will keep the bearing surfaces in better condition.

GENERAL AUTOMOBILE REPAIRS
OIL, GREASE AND ACCESSORIES. ROAD SERVICE.
CYLINDERS HONED ON ANY MAKE OF CAR.
LET US QUOTE YOU PRICES ON ANY REPAIRS.
FOR SALE a National 1 1/2 Ton Truck. No reasonable offer refused.
TEEPLE & HALL
SHOP PHONE 165. NIGHT PHONE 2767.



Everybody says—
"it certainly is good looking" The Coupe.

All the distinction and smart appearance that you would expect to find in a car with body by Fisher, wing low, gracefully proportioned, finished in attractive Ontario Gray Duco, with smart Landau-ows, this coupe—despite its low price—is at once in any company, on any occasion, business or social. In addition, it provides Chevrolet's characteristic economy and the superbly smooth operation of the Improved Chevrolet valve-in-head motor.

Artillery type wood wheels are standard equipment on the Chevrolet Coupe. Disc wheels may be obtained at slight extra cost.

DISTRIBUTORS

CENTRAL GARAGE, LIMITED
CORNER BROCK AND MONTREAL STREETS. PHONE 600.
T. J. ALEXANDER, Arden, Ont. Phone 9.

NEW LOW PRICES

OAKLAND SIX

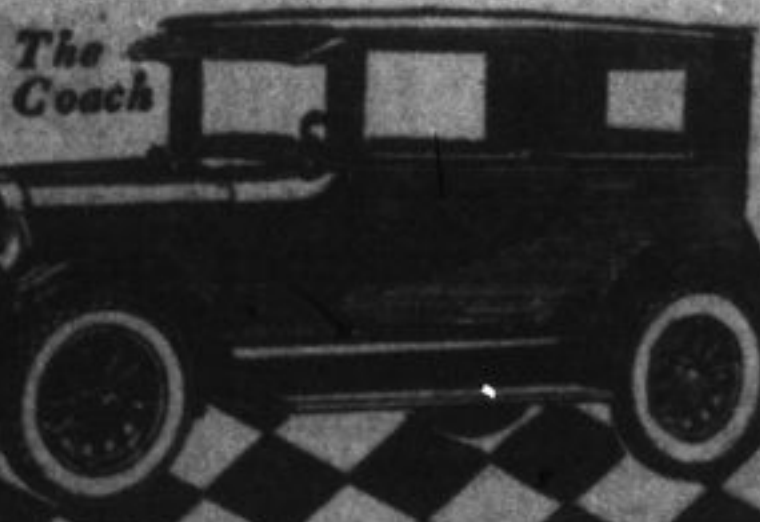
PRODUCT OF GENERAL MOTORS

THE mechanical excellence of the new Oakland Six expresses itself in a spirited performance and an abundance of power for every demand. It rides more smoothly and with less vibration at any speed than cars selling for a thousand dollars more—this is due in part to the Harmonic Balance, a device built into the crankshaft which effectually eliminates torsional vibration, but more particularly to the advanced design and construction of the entire motor and chassis.

The Fisher-built body finished in lustrous, durable Duco, always commands a second glance of admiration, while the handsome interior and comfortable seats belie any previous conception you have had of Coach construction.

And, too, you will be amazed—when you have seen and ridden in it—at the new, much lower price which singles out the Oakland Coach as the logical motor car investment—a demonstration will convince you of this.

HUGHES & BURNS,
Frontenac Garage,
39 Montreal St., Kingston.



Time purchase of Oakland benefit by General Motors own New Time Payment Rate (the GMAC plan).

Os 111