

WARNING REGARDING STOLEN AUTOMOBILES

The President of the Automobile Trade Association Issues a Statement.

The Montreal Automobile Trade Association has issued a warning to the public in connection with the stolen car situation.

Recent legislation passed by the Provincial Government has caused consternation in the ranks of the car thieves, as well as among those who are in possession of cars with unclassified numbers, it says. Referring to this situation, J. E. Smith, president of the Montreal Automobile Trade Association, makes the following statement:

"Information has come to our office that there is a wild scramble being made by owners having cars with false numbers to dispose of them before they are seized by the Government. Dozens of attempts

have been made to trade them in with licensed dealers. Having failed in this, these owners are now trying to dispose of the cars to private purchasers.

"Unless a purchaser knows the person from whom he is buying, he should not take the chance of buying a car that may possibly be seized. To protect purchasers the Government has caused every licensed automobile dealer to put up a bond of \$5,000. The purpose of this bond is to protect the purchaser in case he purchases a car to which a clear title is not obtainable.

"If a used car is offered, and the prospective purchaser has reason to believe it is a stolen car, the authorized local agent of the make of car offered will gladly advise him."

Mr. Smith also makes a plea for better service throughout the province: "In these days service facilities as much as good hotels draw motorists to certain routes," said Mr. Smith. "Boards of Trade and local automobile clubs should endeavor to bring the service stations in their districts to a higher state of ef-

iciency. During April these garages should be cleaned up and made more attractive. There is no excuse for a dirty garage, and the public are getting wise to the fact that the appearance of a garage is a real indication of the calibre of the service given.

"Tourists are bringing millions of dollars to our province every year, and it is up to us to look after them."

Learn Lessons From Accidents.

With some of the most serious grade crossing accidents occurring on side lines where rail traffic is so light as to lead the motorist to imagine that trains run about once a week, it has been suggested by many that it might be well for local motorists to know train schedules as a further help in striving for safety. In majority of instances, however, it is feared that knowledge of train schedules might have the very opposite results. Facts prove that any driver is safer when he figures that it's always train time.

Getting Out of a Mud Hole.

When trying to get a car out of a mud hole, put the engine in low, go slow, and drive straight ahead without turning the steering wheel. If the wheels start spinning, put on the emergency brake just enough to stop the spin. That will frequently enable them to take hold. If it is possible, put any old rope, board, bushes, sacks or even a quantity of paper, under the wheels to help give friction. It is also advised to apply chains before tackling wet or muddy roads.

Champion Spark Plugs—packed in the Red Box 80



Champion Spark Plugs—packed in the Blue Box 90

SUPREME
No matter how fine or well-made the motor car you drive, its satisfactory performance is absolutely dependent on its spark plugs. That is why engineers who design the finest cars made, both in this country and Europe, have selected Champion as standard equipment, and why two out of three motorists the world over buy Champions regularly.

CHAMPION
Dependable for Every Engine
A Canadian-made Product
Windsor, Ontario

Tips on Tires

Learn the correct air pressure for your tires and check it every few days. Four pounds loss of pressure in a balloon tire of a certain size is just as serious as the loss of two or three times that much in a high-pressure tire of a corresponding size.

Avoid overloading your tires—and when it is absolutely unavoidable help the tire to handle the extra load by putting in more air.

Take a careful look to see that your rims may not be causing you the loss of some service from your tires. Make sure that they are true so these tire runs without a wobble.

Scraping a tire against curbs when turning a corner, or when parking, or careless driving over frozen rutty roads, sometimes will wear the rubber off the sidewall and expose the fabric carcass. Water and dirt then enter and rapid destruction of the tire results.

DAZZLE OF HEADLIGHTS

Automobile Club Arranges for Inspection of Lights of Members. In the headlight regulations of the Motor Vehicle Act of the Province, it is stated that "Headlights must be so arranged as not to dazzle or blind the driver of another vehicle coming in the opposite direction."

Every motorist, it was stated at the offices of the Royal Automobile Club of Canada today, is well aware of the annoyances and dangers caused by glaring headlights, and the club in order to assist in remedying the headlight evils has arranged for the convenience of the members for a free inspection service at the Royal garage, where a testing chart prepared by the Bureau of Statistics has been installed for the purpose of lining up the light rays. Similar regulations are also strictly enforced in the bordering states and it is also a requirement of the Motor Vehicle Acts of such states that no headlights shall contain an electric bulb in excess of 21 candle-power.

Free Window Regulators.

Winter is the season of the year when the window regulators of the closed car are inclined to stick. Frequently they will be so stiff that one experiences the sensation that the regular handle will break off unless something is done to remedy the situation. The remedy, however, is a little graphite dropped on the working gears through the window sill opening when the window is fully lowered. Lubricant can be added also through the regulator shaft after the handle and the cap are removed. A mistake, however, is to look for immediate results. The regulator will continue to work hard until the graphite has worked in.

To Detect Defective Battery.

Moisture around the top of a battery and the battery container indicates a crack in the insulation or wax that seals the top of the jars that contain acid. It should be attended to at once, as the acid spills out and is replaced with distilled water, which lowers the specific gravity of the battery liquid and lessens its power.

Indicators—Warning Signals.

Watch the ammeter and oil gauge for any variation, as they are indicators to give warning if anything is wrong with the lubrication or ignition systems or the generator. If the oil gauge shows a decrease in pressure or the ammeter stands at zero or discharges when the engine is running, have the car attended to immediately.

To Correct Faulty Valve.

Valve trouble is often traced to back pressure from the muffler. In case of back pressure remove the muffler and clean the soot and carbon from the plates or tubes or remove one of them. This will give more power to the engine. A slight difference will be noticed in the noise from the exhaust.

Helps to Prevent Skidding.

There will be less danger of skidding, even if chains are used, with lower inflated tires. The flatter the tire the more of its tread will come in contact with the road surface, and the better will be the traction. Remember this some day when a cold rain begins freezing on the streets. It may save a skid.

Run Wiper in Storm.

When parking in an ice storm keep the windshield wiper going, if it is electrically operated. While travelling in the ice storm the wiper should be run at its highest speed. Friction of the wiper against the glass will help to prevent ice from forming over the vision spot of the windshield.

When searching for engine trouble

always try to figure out the probable cause for the trouble before attempting to adjust some part that does not need adjusting. Never make a change in an adjustment without knowing why the change is being made, the effect it will have, and how to restore the mechanism to its original adjustment.

PARKING IN PARK LIMITED

Vancouver, B.C., April 16.—In an effort to prevent the stinging of "petting parties" in Stanley Park, the board of park commissioners yesterday passed a bylaw forbidding the parking of automobiles in the park for longer than 15 minutes later than two hours after sundown.

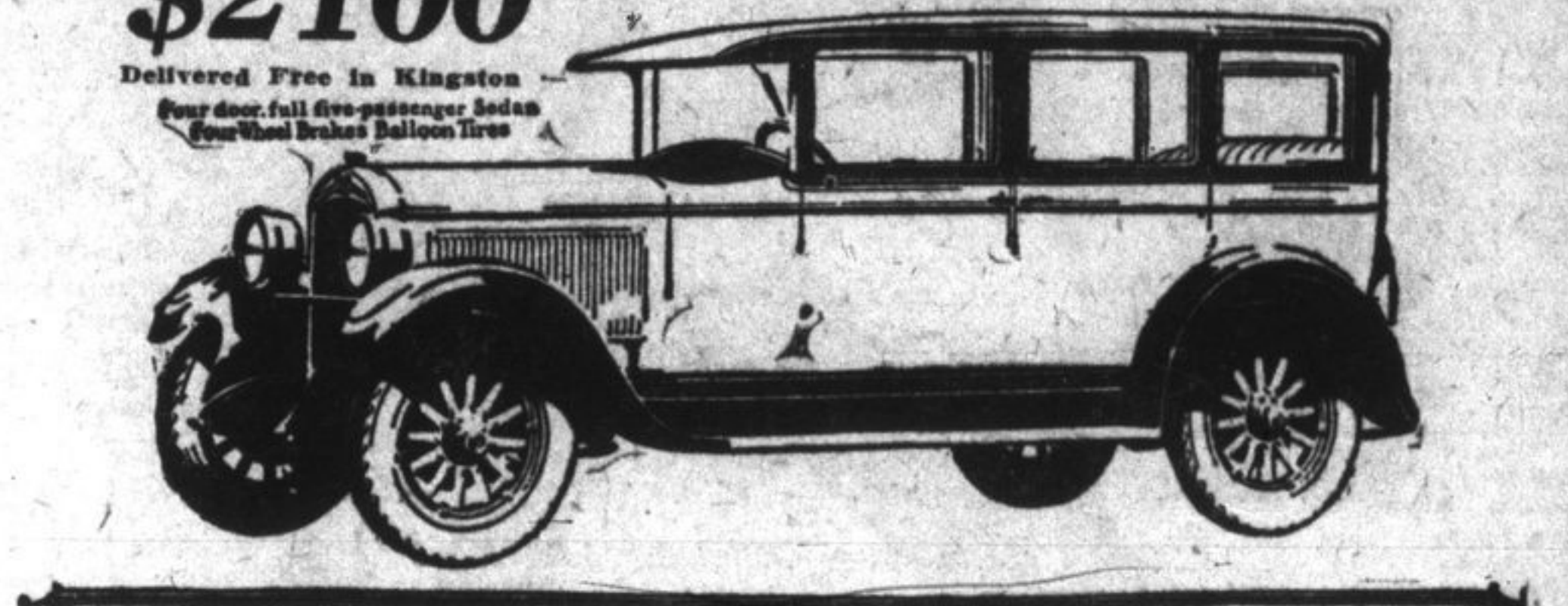
D. B. MacMillan will start on new

Polar expedition in June, financed by F. H. Rawson, Chicago banker. Deposed Fascist Secretary, Farinacci, is said to be keeping up his quarrel with his successor, Turati.

The New Hupmobile

Power--Without Trace of Vibration

Get behind the wheel of this big, roomy, new Hupmobile Six.
Retard the spark and throttle it down to a mile an hour.
Then shoot it up to sixty.
Not a trace of vibration all the way! That's Hupmobile's idea of smooth, flexible power.
A genuine Hupmobile, this Six—with greater performance and longer life than you'll find in any car at anywhere near its low price.



John Morris
Distributor.
29 Brock Street. 'Phone 2444.

for Economical Transportation.



Thousands of testimonials!

In 1925

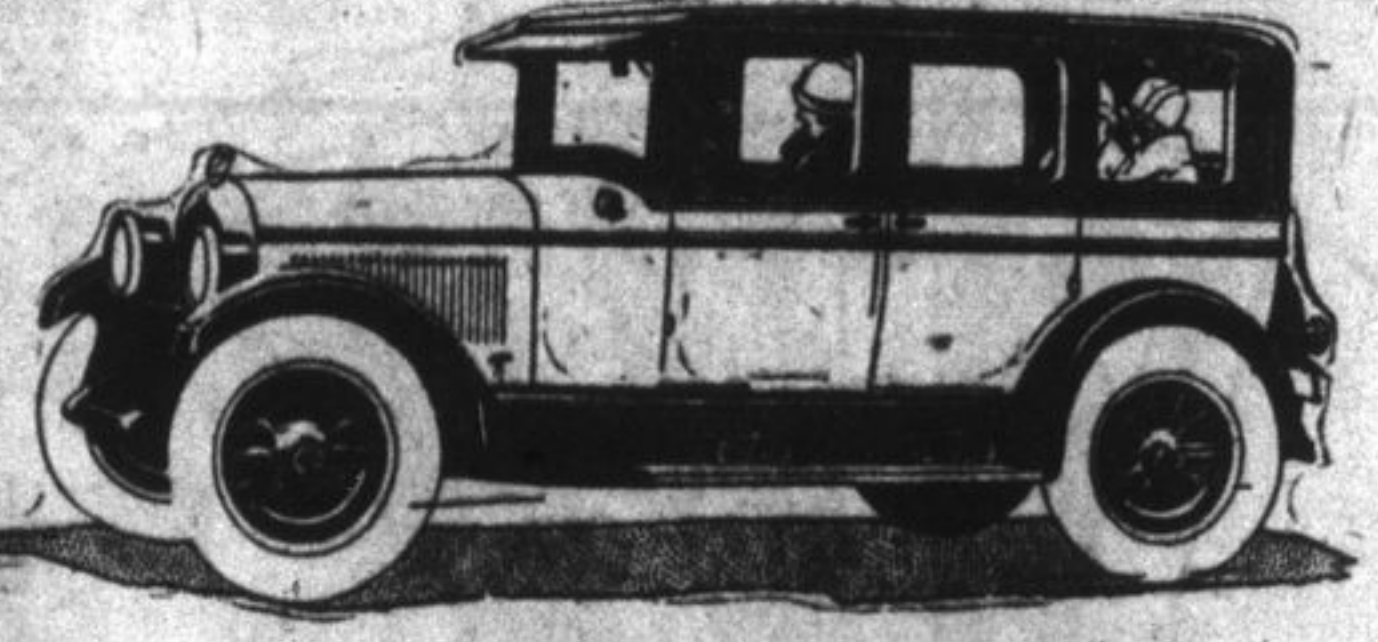
CHEVROLET had its greatest year. During that time literally thousands of testimonial letters were received from satisfied Chevrolet owners—a tremendous avalanche of evidence that the public possesses a genuine appreciation of the car and its performance.

In 1926

Chevrolet offers even greater values than before. With its never-failing standard of quality and the new LOWER prices, Chevrolet is demonstrating to the public, in greater degree than ever, its policy of "QUALITY AT LOW COST".

New Low Prices

DISTRIBUTORS
CENTRAL GARAGE, LIMITED
CORNER BROCK AND MONTREAL STREETS. 'PHONE 600.
T. J. ALEXANDER, Arden, Ont. 'Phone 9.
Greater Quality at Low Cost



Chrysler "70" Owners Get More for Their Money

The trend throughout Canada today is toward the Chrysler "70" because the Chrysler "70" is in line with the nation's trend toward genuine economy.

It satisfies the growing desire to make the dollar go farther—to make it buy more comfort and enjoyment.

The plain fact is that the Chrysler "70" affords all of the roadability, speed, and ease of riding of big, cumbersome cars; and to these adds its own inherent advantages.

It is far less costly to buy and to keep. It gives twice the gasoline and oil mileage of many cars which it equals and surpasses in speed.

But Chrysler superiority doesn't stop with phenomenal performance.

It goes deep into materials and manufacturing. No car is built of finer materials; no car is built to finer standards.

The result is that Chrysler "70" stands up without constant mechanical attention in a way that arouses the highest praise of men and women who are used to the very costliest cars.

Let us show you the Chrysler "70". Ride in it, drive it. That is the only way you can fully appreciate its remarkable qualities.

CHRYSLER "70"

CHRYSLER "70" sells for less—\$2,200 to \$2,500 in this model—than any other car in its class.
CHRYSLER "70" gives you more—more power, more speed, more comfort—than any other car in its class.
CHRYSLER "70" is the only car in its class that has a 70-horsepower engine.
All models equipped with full ball-bearing drive.



We are pleased to extend the convenience of show-rooms. Ask about Chrysler's exclusive plan. Chrysler dealers and expert Chrysler service everywhere.
All Chrysler models are protected against theft by the Federal patented car numbering system, administered by and exclusive with Chrysler, which cannot be copied, altered or stolen or removed without conclusive evidence of tampering.

CLARK BROS.
371 King Street. Telephone 2357f.

MISSIONARY WORK.
Taken Up in Interesting Address Given at Athens.
Athens, April 22.—Helpful addresses were given at the Young People's Society on Monday evening last, when Orval Hollingsworth gave a brief account of the history of missionary enterprise in the island of Trinidad, and in British Guiana, South America, showing that a marvelous transformation had taken place among those colored races, owing to the indefatigable efforts of devoted missionaries. Rev. Mr. Upham, B. Th., pastor of the local Baptist church, gave a helpful address at Sabbath observance. A vocal duet was rendered very acceptably by the Misses Ida Hollingsworth and Goldie Parish; a piano duet by Mrs. H. E. Warren and Miss Geneva Yates; a patriotic chorus by six junior boys, and two Hawaiian guitar duets by Harry and Eric Rowsome, which received such vigorous applause that they contributed two encores in splendid style.
Rear-End Difficulties.
Rear-end trouble is often traced to faulty brakes and grabbing clutches. A sudden start or stop will throw a strain on the driving pinion and master gear. When brakes are applied too suddenly going down hill a jumping of the rear-end results.
Radio station at Rugby, England, running at quarter power, was heard plainly in Java and Hong Kong.
German students have left International Students' Federation, alleging slight on German language.

Again we Say—

what comes after the Purchase Price?

On some cars you save—or think you save—in the beginning.
On some cars you save in the end.
It has long been conceded that Dodge Brothers Motor Cars belong to that small group of dependably built vehicles that prove their superior economy by long life and low cost of upkeep.... vehicles that are more economical in the end.
Now it can truthfully be added that they are also more economical in the beginning—unbelievably so when you consider the high and uncompromising standards of Dodge Brothers quality.
A magnificent array of labor-saving, quality-increasing equipment has been introduced by Dodge Brothers into motor car manufacture.
And the result is the finest product in Dodge Brothers history at the lowest cost.
A product with fashionable new lines, smartly finished in attractive colors, smoothly and quietly powered, quicker in response, sturdier, and providing wider and safer vision for the driver.
In a word, the most impressive value ever offered by Dodge Brothers to the automobile public.

M. OBERNDORFFER
124 CLARENCE STREET
DODGE BROTHERS
MOTOR CARS
MADE IN CANADA