



**THE CANADIAN HOMEMAKER**  
A series of weekly articles  
covering  
PLANNING . BUILDING . FINANCING  
DECORATING . FURNISHING . GARDENING  
Copyright 1926.



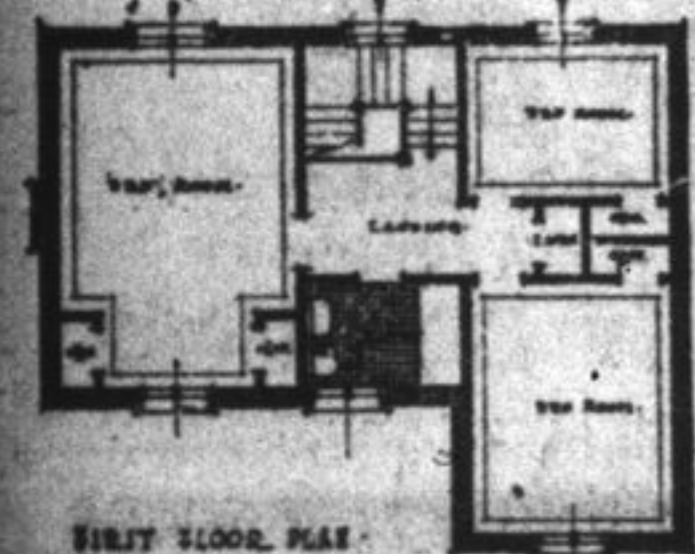
WARREN & McDONNELL  
ARCHITECTS  
HAMILTON ONTARIO

**The Tudor House of Beauty and Convenience**

By Warren and McDonnell, Architects.

Planned for a lot with fifty feet frontage, this house thirty-eight feet by thirty feet, comprises six rooms with the bath room and the dining alcove in addition. The living room with its verandah is the best arranged room as to doors and windows, and leaves very little to be desired for a house of this size. The fireplace, located to give ample space for easy chairs and reading lamps, and wall space for piano and the settee. What might be termed a square hall, with returned stairs and a window on the landing, will make this unusually attractive and homelike. The dining room and dining alcove—which latter has now become a necessary feature in modern house planning—is served directly from the kitchen, which has the trades and basement entrances in close touch.

Three bedrooms on the first floor.



FIRST FLOOR PLAN

with cupboards to each, the larger room being about fourteen feet by fifteen feet. Off the main hall is a roomy bathroom finished with tile and sanitary walls. The basement contains the usual accommodation for laundry, heating plant and storage—well drained and lighted.

The exterior shows a house of Tudor design of much merit; simple, pleasing roof outlines, with eave lines broken by the gabled first floor windows, and interest is added by the careful grouping of the casement openings, and the half timbering of a portion of the first floor. The chimney, carried well above the roof and offsetting the dominating parallel lines by its strong vertical design showing experienced study. Kept snug down on the site the house seems to be a part of the lawn and approaches, an effect not always easily obtained, but very helpful to this style of domestic architecture.

This house will look well built with dark red brick, laid Flemish bond, in white mortar; the roofing of oak stained shingles, and the woodwork painted brown, the half timbered work being left "off the saw," and stained the same color.

A plain Tudor paneled door for the main entrance,—oak preferably and red Dutch tiles for the entrance, will make this a very suitable and attractive entrance.

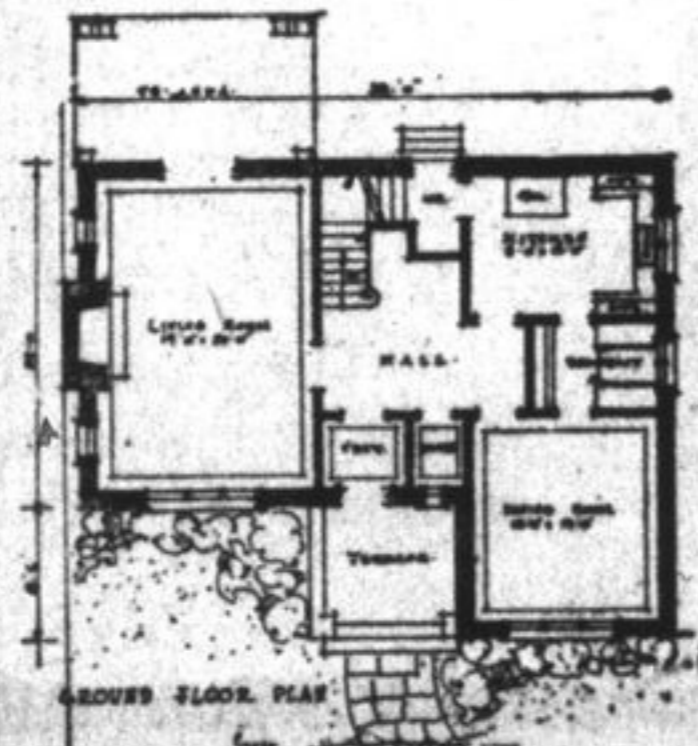
Regarding the interior finish—all the floors are hardwood—oak and birch, stained and floor varnished. Walls throughout with the plaster-

ing finished in fine sand stucco, for cold water paint finish of various tints. The trim, doors and staircase on the ground floor are of plain oak, upper floor in pine, with paint finish.

The plumbing and heating—the latter by hot water—are of the best quality and suitable for this class of a dwelling.

The cost of this house, ready for occupancy, would be about eight thousand, five hundred dollars, exclusive of the land.

Readers desiring further information regarding the plans and specifications of this house should communicate with the architect direct. Address Warren and McDonnell, Home Bank Bldg., Hamilton, Ont. Copyright, 1926, MacLean Building Reports, Limited.



SECOND FLOOR PLAN

**ENVOYS RETURN**



Alanson B. Houghton, ambassador to Great Britain (above) and Hugh Gibson, envoy to Switzerland, in Washington to discuss an arms parity with President Coolidge. Houghton, rumor says, is to become United States Secretary of State.

**ATTENDED GRAND LODGE.**

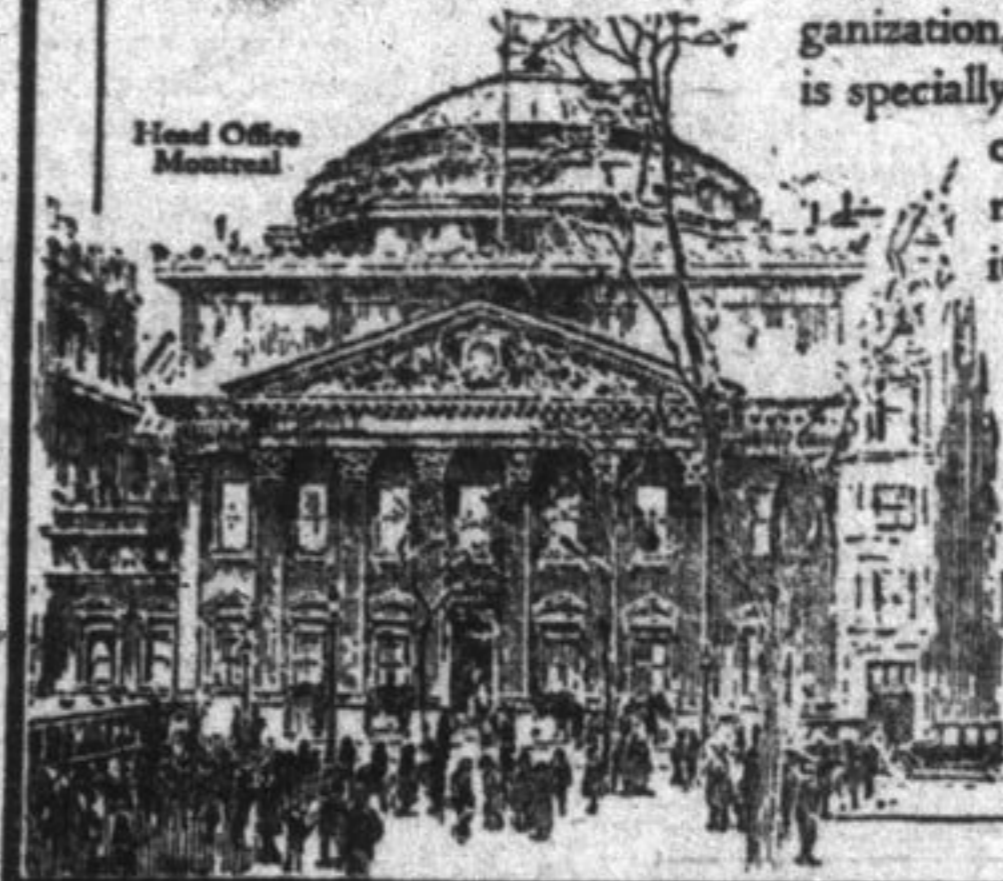
Mrs. William Jackson, Bethel, Was a Delegate.

Bethel, March 25.—The recent rains have left the roads in a bad condition. Mrs. William Jackson was among the ladies who attended the Orange Grand Lodge conventio-

**HELPFUL BANKING SERVICE**

FACILITATING the exchange of money and commodities by the judicious use of credit is one of the primary functions of the Bank of Montreal—an activity which brings it into close and helpful contact with the business interests of Canada.

The Bank of Montreal, because of its resources, organization, experience and widespread connections, is specially well fitted to give its customers the kind of banking service and co-operation which means most to their business, whatever its scope.



**BANK OF MONTREAL**  
Established 1817

Total Assets in excess of \$780,000,000

at Belleville last week. Mr. and Mrs. Perry-Alkenbrack and Mrs. E. Aikenbrack spent Sunday at Mr. Garrison's, Petworth. Mrs. E. Ford, Watertown, N.Y., with her parents, Mr. and Mrs. George Jeffrey, Glenvale, visited at Garnet Jeffrey's on Thursday. Albert Salisbury lost a valuable net Jeffrey.

**Ask Your Wife**

to pass on this  
**Studebaker Big Six Sedan**

—now \$3075 FULLY EQUIPPED  
delivered in Kingston



One-Price prices and Unit-Built construction have made Studebaker Big Six the fastest-selling high-powered car in the world today

YOU will appreciate the Big Six Sedan because it has all the power, speed, stamina and long life that a man could desire in a motor car.

Your wife and her friends will be delighted with the individuality of the Big Six—the sheer richness of genuine mohair—the refinements of finish that exacting women love.

In fourteen months the price of the Big Six Sedan has been reduced \$765. One-Price savings have been passed on to purchasers in three price reductions. As a result the Big Six is out-selling every other car in the world of equal or greater rated horsepower.

**Studebaker's unique facilities**

Few motor car "manufacturers" have foundries, forgings, etc., to make their own engines—yet one-fifth of the cost of an automobile is in the engine. Even fewer build their own bodies—yet one-third the cost of a car is in the body.

Not only does Studebaker make all bodies and all engines used in Studebaker cars, but also all clutches, gear sets, springs, differentials, steering gears, brakes, axles, gray-iron castings and drop forgings. Only Ford in the low-price field and Studebaker in the fine-car field enjoy the benefits of such complete manufacturing facilities.

**One-Price value**

These facilities enable Studebaker to manufac-

ture quality cars on a One-Price basis. They enable Studebaker to eliminate the profits of outside parts and body makers. Many major savings are thus effected and passed on to the ultimate buyers of Studebaker cars, either in the form of higher quality, lower price—or both.

**Unit-Built construction**

Studebaker facilities result, too, in Unit-Built construction—in cars designed, engineered and built as units. The hundreds of parts used in a Studebaker car function together as a unit, resulting in longer life, greater riding comfort and higher resale value. Scores of thousands of miles of excess transportation thus are built into Studebaker cars.

**Always kept up-to-date**

Because all phases of manufacture are directly under Studebaker control, Studebaker cars are constantly kept up-to-date. We add improvements regardless of the calendar—we do not save them up for spectacular annual announcements which make cars artificially obsolete. Resale values are thus stabilized.

**Rock bottom time-payment rates**

We welcome the purchaser who prefers to buy out of current income instead of capital. Any Studebaker can be purchased for a small down payment and the remainder in convenient monthly installments. It is possible that your present car is acceptable as the initial payment on a new Studebaker.

**Studebaker Big Six 5-Passenger Sedan**

**\$3075**

Delivered in Kingston

Under Studebaker's fair and liberal Budget Payment Plan, this Sedan may be purchased out of monthly income for a small initial payment and at very low time-payment rates.

**STUDEBAKER Big Six 5-Passenger Sedan**

To surpass it in rated horsepower costs two to four times as much

THE 5-Passenger Big Six Sedan is powered with the identical engine that carries hundreds of Studebaker buses at high speed over some of the most mountainous and difficult-to-travel roads in America—hence we urge you to compare its thrilling performance with that of any eight-cylinder car. It is luxuriously comfortable, beautifully finished, elaborately equipped.

Based on the rating of the National Automobile Chamber of Commerce and the Society of Automotive Engineers, only seven American cars equal this Big Six Sedan in power. But they sell for two to four times its price.

It is richly upholstered in genuine mohair, which is indicative of the fine quality body construction you cannot see. Body pillars are of northern white ash—cross-members of hard maple.

It has an automatic spark control, safety lighting switch on the steering wheel, gasoline gauge on the dash. There's also an 8-day clock, automatic windshield cleaner, rear-view mirror, cowl ventilator, stop light, air cleaner, gasoline and oil filters, inspection light on 10-foot cord.

Ride in it, feel the surge of power from the smooth, silent engine, compare its performance with any eight-cylinder car, and you will know why the Big Six out-sells all other cars of equal or greater rated horsepower.

**MODERATE PRICED HOMES**  
Before you build make your selection from the many exterior and floor plans shown in the MacLean Builders' Guide. Designs by Canadian Architects only. Interesting articles on building, decorating, furnishing and gardening. 20 cents a copy, post paid. MacLean Building Reports, Ltd., 331 Adelaide St. West, Toronto.

**KEEP YOUR SCALP Clean and Healthy WITH CUTICURA**

**If Ruptured Try This Free**

Apply it to any Rupture, Old or Recent, Large or Small and You are on the Road That Has Convinced Thousands.

**Sent Free To Prove This**

Anyone ruptured, man, woman or child, should write at once to W. S. Rice, 418 E. Main St., Adams, N. Y., for a free trial of his wonderful stimulating application. Just put it on the rupture and the muscles begin to tighten; they begin to bind together so that the opening closes naturally and the need of a support or truss or appliance is then done away with. Don't neglect to send for this free trial. Even if your rupture doesn't bother you what is the use of wearing supports all your life? Why suffer this nuisance? Why run the risk of gangrene and such dangers from a small and innocent little rupture, the kind that has thrown thousands on the operating table? A host of men and women are daily running such risk just because their ruptures do not hurt nor prevent them from getting around. Write at once for this free trial, as it is certainly a wonderful thing and has aided in the healing of ruptures that were as big as a man's two fists. Try and write at once, using the coupon below.

Free For Rupture  
W. S. Rice, Inc.,  
418 E. Main St., Adams, N. Y.  
You may send me entirely free a sample treatment of your stimulating application for rupture.  
Name .....  
Address .....  
State .....



**DEVELOPS ERYSIPELAS CURE**

A serum that he believes will prove as effective in curing erysipelas as anti-toxin has proved in diphtheria cases has been developed by Dr. Kenrad E. Birkhaug at the University of Rochester School of Medicine, Rochester, N.Y. The serum was developed after two years of research by Dr. Birkhaug.



**A STRAIGHT TALLOW DIET**

Up in the north woods they figure tallow as an important foodstuff—for dogs, anyhow. Photo shows a prospector, mushing north from Hudson, Ont., to the Red Lake gold fields, feeding one of his huskies with tallow. The dog is all for it, too.

**PAIN from Bladder Irritation**  
Soon eased by Santal Midy  
Remedy of Irritation  
Look for the word "MIDY"  
Sold by all druggists

A British town has a non-skid roadway made of wooden blocks with projecting rubber insets.

**W. O. Hagerman**  
12-14 Queen Street Phone 22