

# In the Automobile World

## Hints for Motorists

A closed car is not locked until the windshield is fastened on the inside. Many cars are stolen because a hand can be poked through the windshield until a front door handle is reached.

Alcohol injures laquer finishes. Every precaution should be taken against having the radiator boil over in winter.

If the engine stalls when crossing railroad tracks step on the starter

but don't shift into neutral. The starter motor will help pull the car to safety.

Many drivers do not realize it, but they race the engine in second and often do as much damage to it as they would if they drove like mad in high gear.

A loose front end drive chain, for instance, may not jump a sprocket until the car is running at fifty miles an hour. But if the owner runs up to thirty miles an hour in second the chain will do just what it would do at a greater speed in high.

The car should be run while after water is added to the storage

battery in order to start chemical action in the direction of charging.

The idle gear in the front end drive, of an engine is placed between the crankshaft and water pump (or accessory shaft) gears, thus enabling the latter to be geared for a greater number of revolutions per minute than the crankshaft.

Off-set cylinders offer a means of reducing side thrust on cylinder walls without lengthening connecting rods and increasing the stroke of the engine.

The main requirement of any oil or chemical used as an engine fuel is volatility. The fuel must vaporize quickly.

## Tire Tips

Learn the correct air pressure for your tires and check it every few days. Four pounds loss of pressure in a balloon tire of a certain size is just as serious as the loss of two or three times that much in a high-pressure tire of corresponding size.

Avoid overloading your tires—and when it is absolutely unavoidable, help the tire to handle the extra load by putting in more air.

Anything which causes a tire to drag with more or less side motion, instead of running true, will grind the rubber tread away faster than is normal. A brake which drags will cause rapid tread wear, also.

See that your skid chains are not so tight that they gouge into the tread and fabric carcass of your tire.

Scraping a tire against curbs when turning a corner, or when parking, or careless driving over frozen rutty roads, sometimes will wear the rubber off the sidewall and expose the fabric carcass. Water and dirt then enter and rapid destruction of the tire results.

Take a careful look to see that your rims may not be causing you loss of some service from your tires. Make sure that they are true so the tire runs without a wobble.

Probably no one thing causes tires to be scrapped before they have given full service more than a break or crack in the fabric body of the tire, commonly called a stone bruise. Usually the tire can be saved if such injuries are promptly remedied by a good vulcanizer.

Can You Invent These Devices? Motorists of a mechanical turn of mind may be interested to learn that there is a big demand for more automotive inventions. Possibly it might stimulate inventive genius to know what some of the needed improvements are.

There is ready money waiting for the person who can work out a simple method of eliminating the poison gas fumes from the motor exhaust. The method must be simple.

When a clever mind conceives a means of attaching the air hose direct to the dust cap of the tire, without the annoyance of unscrewing or removing the cap, there will be some new encouragement for inventors.

One of the biggest opportunities, according to a successful inventor, lies in the field of self-starters. He contends that no self-starter, to date, has equalled the whipping effect of hand-cranking.

## ALCOHOL FOR MOTORS IS RELIABLE FUEL

Experts Give Opinion On Much Discussed Question.

Three years of study by American chemists into the possibilities of alcohol as a motor fuel have brought them to the following conclusions:

These would be the advantages: 1—It generates less heat by combustion and consequently, requires less cooling water.

2—The cylinder temperatures are lower, thereby decreasing cylinder lubrication difficulties.

3—The rate of flame propagation is less, and the pressure more nearly uniform through the entire stroke of the piston, resulting in smoother operation, less vibration and less knocking.

4—The engine develops from 10 to 20 per cent. more power than with gasoline, and at any one compression gives a greater heat efficiency.

5—Alcohol can be used at much higher compressions than gasoline without danger of pre-ignition. The best compression pressure of gasoline is about 70 pounds to the square inch, compared with 180 pounds for alcohol.

These are the chief disadvantages of alcohol as a motor fuel:

1—Having low volatility, it is hard to obtain an explosive mixture of air and alcohol in cold weather; hence difficulty in starting when cold.

2—Alteration of carburetor adjustment is necessary because of great differences in the explosive mixture.

3—The explosive mixture is formed within narrower limits than gasoline and air, therefore the engine has a much lower flexibility.

The explosive mixture with gasoline is between 15 and 23 of air to one of gasoline. With alcohol it is 9.5 to 11.5 of air to one of alcohol.

Cuba sees many autos run on alcohol. The reason is alcohol is much cheaper there than gasoline.

A Toronto painter is to receive \$65,000 for painting three generations, taking in 14 persons.

# Buy with Care!

Three Things Determine Whether the Price You Pay for Your Automobile is High or Low—

### Check Value For Value

Check the value in the car you buy on the basis of the advertised f.o.b. price. Chevrolet quality, power, appearance, easy riding, dependability and economy provide the reasons why over 2,000,000 people have bought Chevrolet cars.

### Investigate the Cash Delivered Price

The purchaser of any automobile pays for freight, tax and handling charges. Chevrolet's low delivered price includes these charges—there is no padding.

### Check Time Financing Charges

The financing charges when buying a Chevrolet on time are the lowest in the world. And these minimum charges include financing and fire and theft insurance. No other charges—no side notes to be signed.

Because of Chevrolet's low cash delivered price and the lowest of financing charges, you obtain the greatest value at the lowest cost, whether you pay cash or buy your CHEVROLET on the GMAC Time Payment Plan.

Come in—Let us show you how we can save you money in buying a Chevrolet on time.

DISTRIBUTORS

**CENTRAL GARAGE, LIMITED**  
CORNER BROOK AND MONTREAL STREETS. PHONE 600.  
**T. J. ALEXANDER, Arden, Ont. 'Phone 9.**

It's Easy to Pay for a Chevrolet

## The Story the Years Tell

In these days of value-seeking, the knowing motorist, looking for proven dependability over the years, can see nothing to it but "DUNLOPS." To-day DUNLOP is giving you a Balloon Tire greeted everywhere as the "Real Goods."

Go back Five Years and Dunlop was giving you the first Tip-Top Cord Tire.

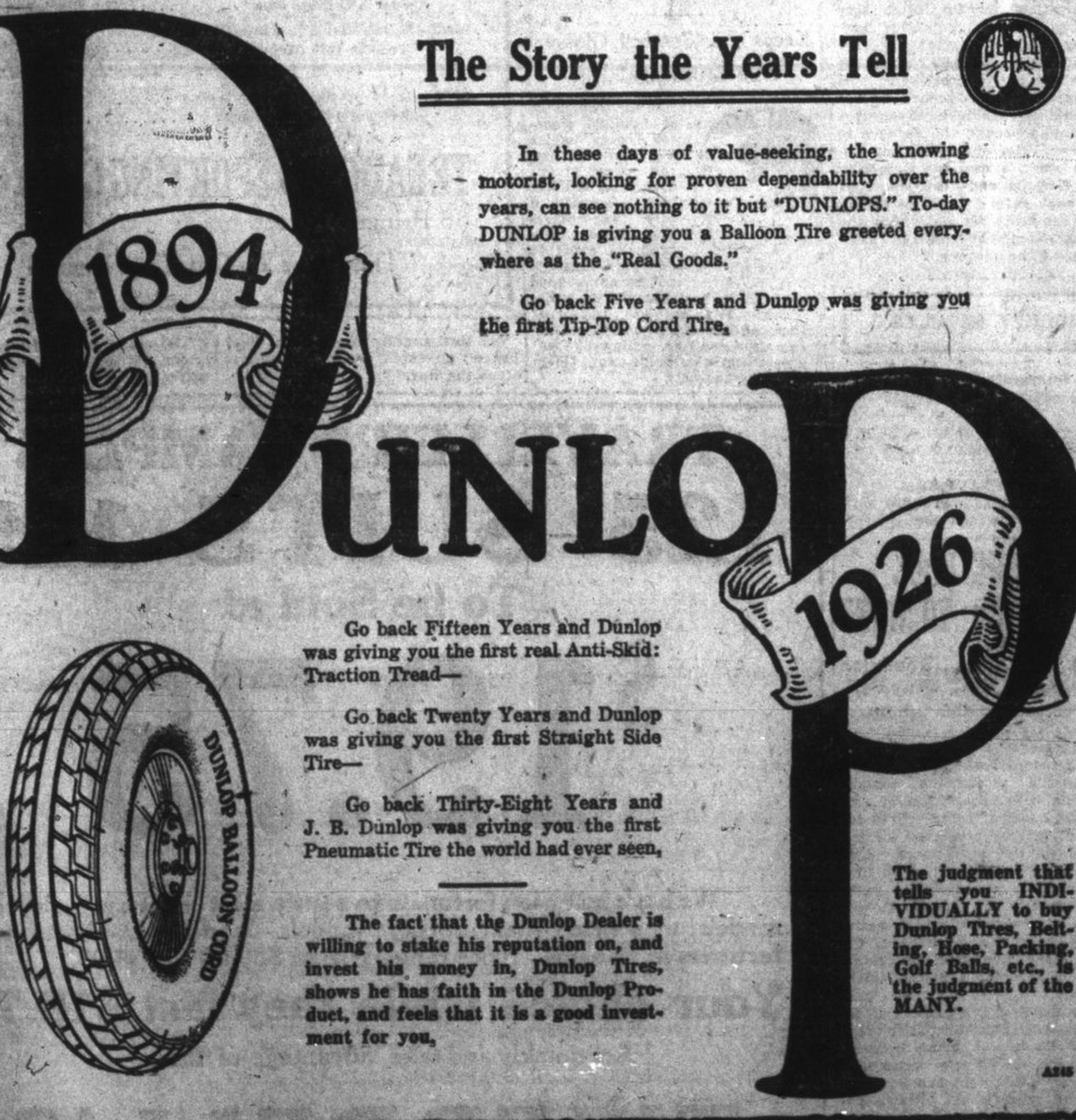
Go back Fifteen Years and Dunlop was giving you the first real Anti-Skid: Traction Tread—

Go back Twenty Years and Dunlop was giving you the first Straight Side Tire—

Go back Thirty-Eight Years and J. B. Dunlop was giving you the first Pneumatic Tire the world had ever seen.

The fact that the Dunlop Dealer is willing to stake his reputation on, and invest his money in, Dunlop Tires, shows he has faith in the Dunlop Product, and feels that it is a good investment for you.

The judgment that tells you INDIVIDUALLY to buy Dunlop Tires, Belting, Hose, Packing, Golf Balls, etc., is the judgment of the MANY.



SOLE DISTRIBUTORS FOR DUNLOP TIRES  
**ATTWOOD & DINE** 277 Bagot St. 'Phone 902-m.

## Only in Chrysler "70" You Find Cause for Such Pride

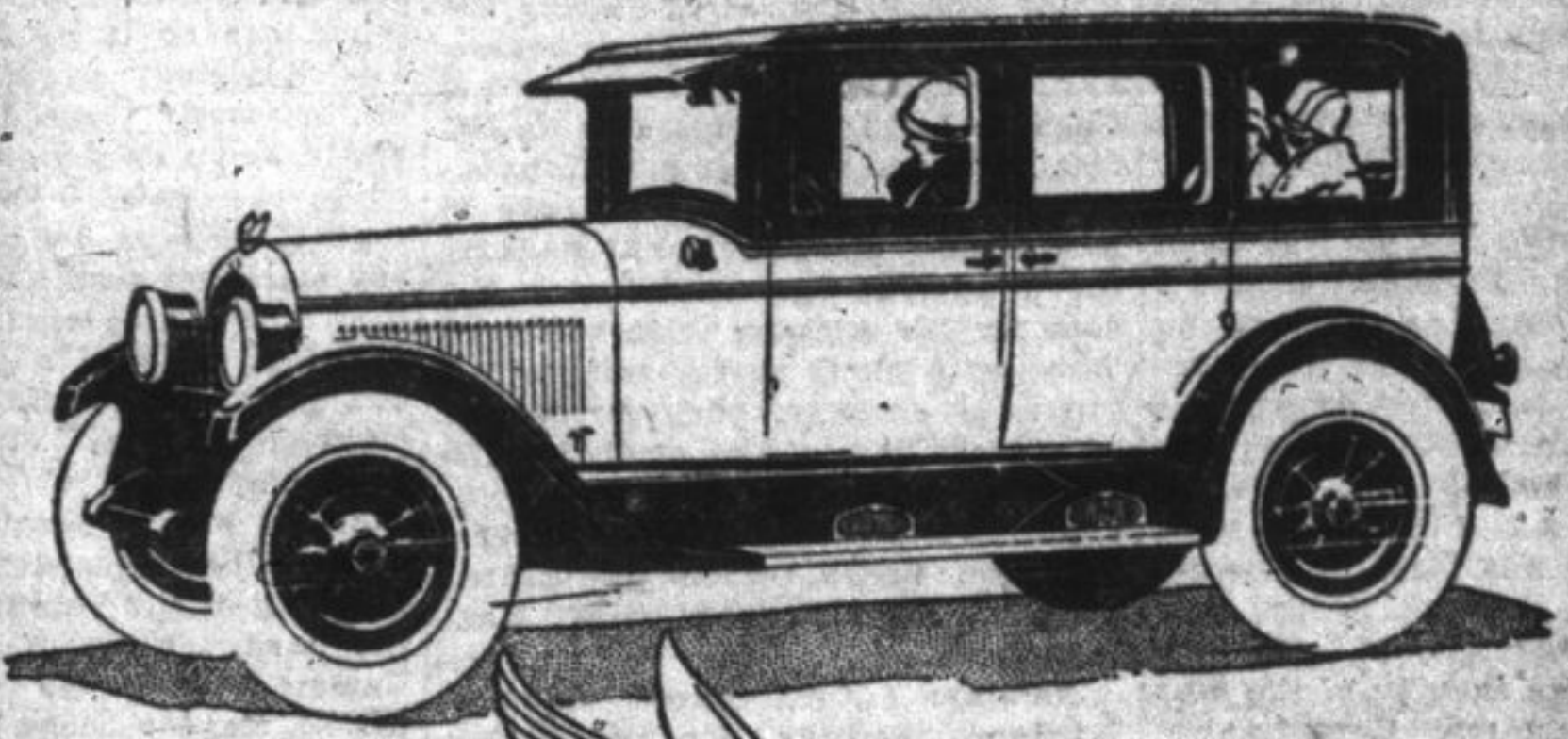
If you talk to a man or woman who drives a Chrysler "70", you discover at once a degree of enthusiasm far beyond the ordinary owner-opinion of a motor car.

The Chrysler owner frankly glories in the brilliant super-performance of his car. You find him proud of its economy, its comfort and beauty, its velvety handling ease, its freedom from mechanical drudgery.

Not with a Chrysler owner here and

there would you encounter such a feeling, but with one after another, and those who have the longer acquaintance with this car will tell you of durability proved by thousands and tens of thousands of miles.

We are eager to give you the ride in a Chrysler "70"—the precise body type you like—which will reveal the justification of this unbounded enthusiasm by all its many thousands of owners.



CHRYSLER "58"—58 miles per hour—30 miles to the gallon—5 to 25 miles in 8 seconds.

CHRYSLER "70"—70 miles per hour—5 to 25 miles in 6 1/2 seconds—68 horse-power—hydraulic four-wheel brakes.

CHRYSLER IMPERIAL "80"—As fine as money can build—Almost luxury for 2 to 7 passengers—92 horse-power—80 miles per hour.

Deals by Fisher on all Chrysler enclosed models. All models equipped with full balloon tires.

We are pleased to extend the convenience of time-payments. Ask about Chrysler's attractive plan. Chrysler dealers and experts Chrysler services everywhere.

All Chrysler models are protected against theft by the Fedco patented car numbering system, exclusive with Chrysler, which cannot be counterfeited and cannot be altered or removed without conclusive evidence of tampering.

# CHRYSLER

CLARK BROS.  
371 King Street. Telephone 2357f.

## Now the Public Knows!

Just One Year Old—  
60,000 Supremely Satisfied Owners.



# Overland Six Coach

\$1275  
F.O.B. Factory  
Taxes Extra

FOR such success as this, there can be but one reason—a measure of value far and away beyond anything price would indicate.

Open the door. Step in. Sit back in this big oversize car, and relax. Note the spaciousness of it due to its extra-long wheel-base—leg and elbow room in abundance for 5 full grown people. The luxurious velour upholstery is but an indication of the superb quality which prevails throughout.

A car for men—fast, powerful, substantial. A car for women—beautifully, tastefully appointed, easy to handle. A 38-horse-power engine, brimming with power. It whisks you in and out of traffic and sweeps you over steep hills or throttles down to six, four, two miles an hour when you want it to.

From water cap to tall lamp, here is a car of spectacular beauty. With more snap and style, more pep and power than you can get in any other car anywhere near the price.

Let us prove it. Come in. We want your judgment.

R. H. PAUL,  
146 Sydenham St. (Near Princess),  
Kingston.