

# WELCOME BACK

INSTEAD OF SERVICE ONCE A WEEK AT THE OLD BRICK CHURCH, WE NOW HAVE SERVICE ALL THE TIME. :: :: ::

## THE CENTRAL GARAGE Ltd.

BROCK AND MONTREAL STREETS

TELEPHONE 600.

WE NEVER CLOSE.

STUDEBAKER OLDSMOBILE CHEVROLET

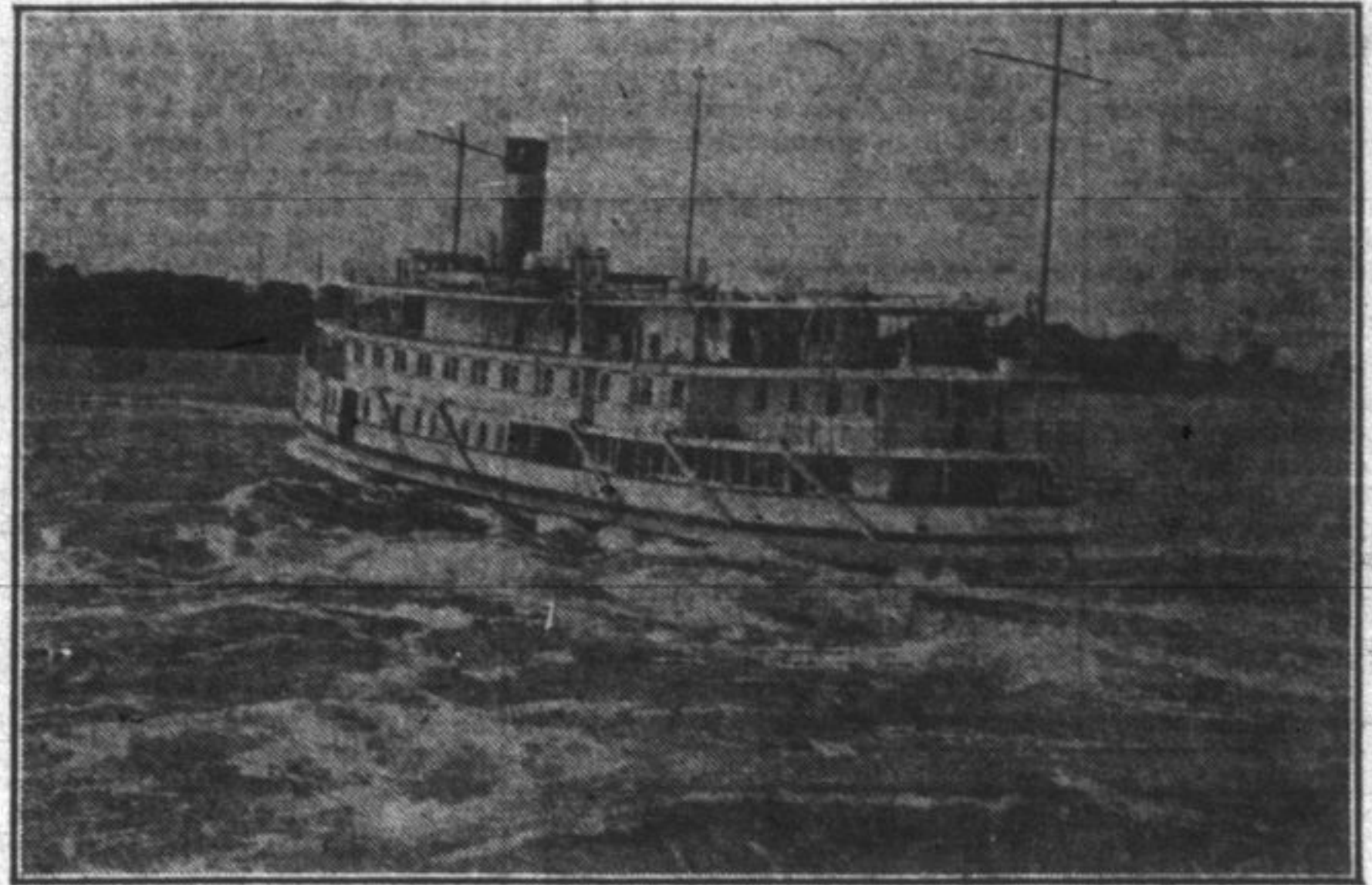
### Drop in and see if We Remember You

GEORGE BAWDEN	JOE CLARK	JACK BAWDEN
BILL PETERS	HAROLD ALLEN	ALBERT HUGHES
JOE MILLER	BILL McCARTHY	EARL O'CONNOR
TOM DISNEY	HAROLD TAYLOR	CLIFF HUNT
OLIVER MARTIN	FRED HALL	BOB HAZELTON

## Donnelly Salvage & Wrecking Co. Ltd.

Phones: Office 528. Kingston, Ontario  
 Dock 1500.  
 Res. 437.

TUGS, LIGHTERS, DIVERS, STEAMPUMPS, ETC. Supplied on shortest notice



S. S. Rapids Prince stranded in Lachine Rapids, July 30th, 1922. Salvaged by the Donnelly Salvage & Wrecking Co., Sept. 9th. Naval experts consider this the greatest feat in the history of Salvage operations on the St. Lawrence River.

STR. "CORNWALL"—Powerful, light, draft steel Steamer; outfitted with a 40-ton steel derrick; fitted with clamshell outfit; 3 12-inch rotary steam pumps and boilers, diving outfits, air compressors, lifting jacks, 11-inch wrecking hawsers; syphons, 2 6-inch and 1 4-inch steam connections and steel hose for steam pumps.

TUG "MARY P. HALL"—Screw, powerful Lake and River Tug.

SCREW TUG "FRONTENAC"—Fitted with 100 tons pulling steam winch, 3 ton anchor and 3,500 ft. of 1 1/4 inch steel cable, syphons, 1 6-inch and 1 4-inch steam connections and steel hose for steam pumps.

TUG "DONNELLY"—Fitted with 100 tons pulling steam winch, 3 ton anchor and 3,500 ft. of 1 1/4 inch steel cable, syphons, 1 6-inch and 1 4-inch steam connections and steel hose for steam pumps.

SCREW TUG "WILLIAM JOHNSTON"—Fitted with 100 tons pulling steam winch, 3 ton anchor and 3,500 feet of 1 1/4 inch steel cable, syphons, 1 4-inch and 1 3-inch steam connections and steel hose for steam pumps.

LIGHTER "COBBOURG"—(1,300 tons capacity) Fitted with McMyler clamshell outfit.

LIGHTER "MAMIE"—(900 tons capacity). Fitted with McMyler clamshell outfit.

LIGHTER "HARRIETT D."—(850 tons capacity). Fitted with McMyler clamshell outfit.

The Donnelly Salvage & Wrecking Company is devoted exclusively to salvage work. The above outfits are on board the wrecking steamers at all times, and are ready to go at a moment's notice to any vessel requiring assistance, night or day.

JOHN DONNELLY, President and General Manager.

# WELCOME—OLD BOYS AND GIRLS

We are right glad to see your familiar forms and faces again on our streets and highways

BETTER STAY OVER AND VISIT KINGSTON'S NEXT BIG ATTRACTION

## THE INDUSTRIAL EXHIBITION

SEPTEMBER 15th to 19th, 1925

The city people will all be there—the country people will all come to town for the greatest annual re-union of all.

Exhibits this year will be bigger than ever, and will include such as are found only at the Canadian National Exhibition.

Horse Races—\$3,000 in Purses.

Baseball Games—Daily.

Snappy Vaudeville Acts before Grand Stand

Big Poultry Show, Dog Show, etc.

Big Carnival each night, Music Galore.

Arthur Day,  
 President

R. J. Bushell,  
 Sec.-Treas & Mgr., Bath Road P.O.