

**TIMELY TALKS WITH
AUTOMOBILE OWNERS**

In wet weather there should be less brake band clearance so that there will be less possibility of the brakes becoming water-logged. If you cannot adjust the bands without sacrificing equalization the next best thing is to take up on the turn-buckles or the foot pedal position so that as much leverage as possible can be obtained when using the brakes. In other words, if the bands can't be made tight enough to keep out the water at least see that the brakes are efficient enough so that the water can be quickly squeezed out when you want to stop. This rule applies as well to hydraulic four-wheel brakes. Bands for four-wheel brakes are usually adjusted for greater clearance than for the two-wheel variety, but to drive out the water in stopping, the brakes should be adjusted so that there is no slack in the foot pedal. With the hydraulic system simply pump up the pressure from the reserve tank under the hood.

Mysterious Knocks.

One of the most baffling troubles a car owner can encounter is having his engine knock regularly for 50 miles and then purr like a dream for the next 50, or vice versa. Reason tells him that the cause of the knocking must be of a temporary nature, but he is usually unable to imagine what could be so seriously wrong with a motor as to cause so decided a knock to appear in normal running and then disappear again. One motorist with such trouble finally discovered that the piston pins were of the floating type. That is, the upper ends of the connecting rods were free to adjust themselves in the most

suitable position on the piston pins. It happened that this freedom was hindered in one instance by reason of a slightly irregular pin in one of the pistons.

Stretching the Gallons.

If you think car ownership has resolved itself into a few cut and dried rules or that there is nothing new to learn here is a little stunt in gasoline economy worth trying:

The next time you take a trip over the open road or through the city make no effort to coast nor to tamper with the carburetor. Instead, eliminate unnecessary stopping. Drive the car as though it had no brakes. Rather than take a chance proceed cautiously.

You'll be surprised to find that your gas mileage will be the best you have ever obtained. It will convince you that stretching the gallons means to stop stopping. Killing momentum costs money.

Grease Needed Here.

Your radiator shutter device should have a little greasing now and again if it is so to work efficiently. It may seem as though a little grease on the shutter bearings should last for a long, long time, but you forget that there is often considerable heat at this point. Ordinary oil will quickly thin out and run off. Then, too, in extremely cold weather the grease may get gummy and hard so as to interfere with efficient operation of the device. The answer is to see that the shutter ends are always clean and lubricated in accordance with weather and driving conditions.

BATHING GIRLS ARE BANNED OUT IN B.C.

Recently in these columns mention was made of how Guelph is taking the joy out of life by prohibiting

motorists driving to fires. B. C. is a joy killer of a different type for by recent order-in-council bathing girls and other stickers are proscribed by law on motor vehicle rear windows and windshields (except the lower portion of the latter) and motorists are forbidden to equip or have their cars or trucks equipped with sirens similar in tone to those used by the police and fire departments.

STUDEBAKER BROUGHAM ON BIG SIX CHASSIS

Luxurious New Five-passenger Car Just Received by Local Studebaker Dealer.

It has the privacy and quiet luxury of the deep davenport in a club library—the new Big Six 5-passenger Brougham, latest addition to the Studebaker line which is now being shown for the first time by the Central Garage, Limited, local Studebaker dealers.

The production of this new Brougham will be limited. It is designed to appeal to the buyer who seeks the utmost in distinction and exclusiveness—without extravagance. The body, a masterpiece of Studebaker craftsmanship, establishes a style standard that is unexcelled by leading European and American custom body-builders. The price is \$3,555 f.o.b. Walkerville, Ont., exclusive of taxes.

The distinctiveness of the Brougham is emphasized by elimination of rear-quarter windows, thereby affording a privacy to rear-seat passengers not hitherto attained in any model.

Lacquered in Blue and Black.
The lower section of the body is finished in Studebaker royal blue lacqueroid while the top is lacquered in black.

Upholstery is in rich broadcloth, taupe in color with a blue stripe effect for cushions and sides, and in a monotone taupe for headlining. The velvet carpet, inlaid American walnut door panels, walnut garnish moulding, and instrument board are high spots of appointments within. Fittings are in butler silver of striking design and quiet dignity.

Special equipment outfits the car completely. This includes a steel trunk, bumpers fore and aft, snubbers, deluxe motometer, an extra balloon tire, tube and tire cover with thief-proof lock, and a combination stop-and-tail light; these are outside.

Within are an automatic windshield cleaner, rear-view mirror, silken toggle grip to support egress from the car; opalescent rear-quarter lamps, a silken shade to shield the rear window, and an inspection lamp with extension cord.

The one-piece, fully ventilated windshield is shaded by a sun-proof visor. Arm-rests in the rear compartment are built in as part of the substantial framework of the car body.

Dimmers Controlled From Steering Wheel.

All instruments are grouped beneath one oval glass, indirectly lighted, against a silvered background. Dimmers are controlled from the steering wheel, so eyes need not be taken from the road to grope for a switch. The engine controls its own spark advance, eliminating the advance lever on the wheel and providing one less control for the driver to watch.

Like all Studebaker bodies, the new Brougham body is built in Studebaker plants, and is mounted on the regular Big Six chassis of 127-inch wheelbase with 75 horsepower engine. Natural wood wheels and big, full-size balloon tires add the final quality touch.

Soft, secluded luxury; great power, comfort and assurance; dignified appearance—these mark the new Studebaker Big Six 5-passenger Brougham.

REO AGAIN EXCEEDS ALL SALES RECORDS

Shipments During April Were Greatest in Entire History of Company.

Notwithstanding the fact that shipments from the Reo Motor Car Company during the month of March established a new record, this veteran manufacturing company again exceeded all previously attained figures with its shipments for April. April is now going down in the books as the greatest month in the history of Reo sales. March, 1925, and May, 1923, are

recorded in order as the next two largest months in Reo history. The largest April prior to 1925 was enjoyed in 1917, but shipments for the month just closed were more than 10 per cent. higher than those in April, 1917.

During all of 1924 April was one of Reo's outstanding months, but April, 1925, was 15.9 per cent. above April of last year.

In spite of this very substantial increase in shipments to which Reo has held during the past two months, dealers from all parts of the country continue to clamor for additional Speed Wagons, passenger cars, and busses.

A large share of the cars that leave the shops in Lansing each day are sold to retail buyers before they leave the assembly line, and dealer stocks continue to be unusually low.

Reo officials attribute the unprecedented buying to the continued popularity of the Speed Wagon for practically all types of business, and to a greatly increased demand for Reo passenger models and busses. The Speed Wagon, while it has been one of the world's leading sellers among commercial cars since its introduction in 1914, is more than keeping pace with the accelerated sale of all motor vehicles during the current year.

TRAFFIC NOTES

1. Keep your brakes properly adjusted. (To stop in time saves lives and property.)
2. Look out for children. (You can never tell what they will do and you're always wrong if you hit one.)
3. If it's a risk—don't take it. (Better a minute at a crossing than a month in the hospital.)
4. Don't race with the other fellow. (If you must speed, do it where it won't kill anybody but yourself.)
5. Be careful when you change your course. (A sudden change, even with a signal, may result in a bad accident.)
6. Signal with your hand. (The other driver cannot read your mind.)
7. Read and obey traffic and warning signs. (They are not put up as ornaments.)
8. Don't hinder the traffic officer—help him. (He's there for your good, and he's got a tough job.)
9. Don't make a left hand turn if you can avoid it. (Drive around the block and save the price of a new car.)
10. Don't try to buck traffic. (You always end up in a jam.)
11. Don't pass a standing trolley. (Others have done it to their sorrow.)
12. Dim your lights. (Don't try to light the street—pillar lights are for that purpose.)

NOTICE TO CAR OWNERS

Have your car inspected and gone over before the spring rush.

We absolutely guarantee all work done.

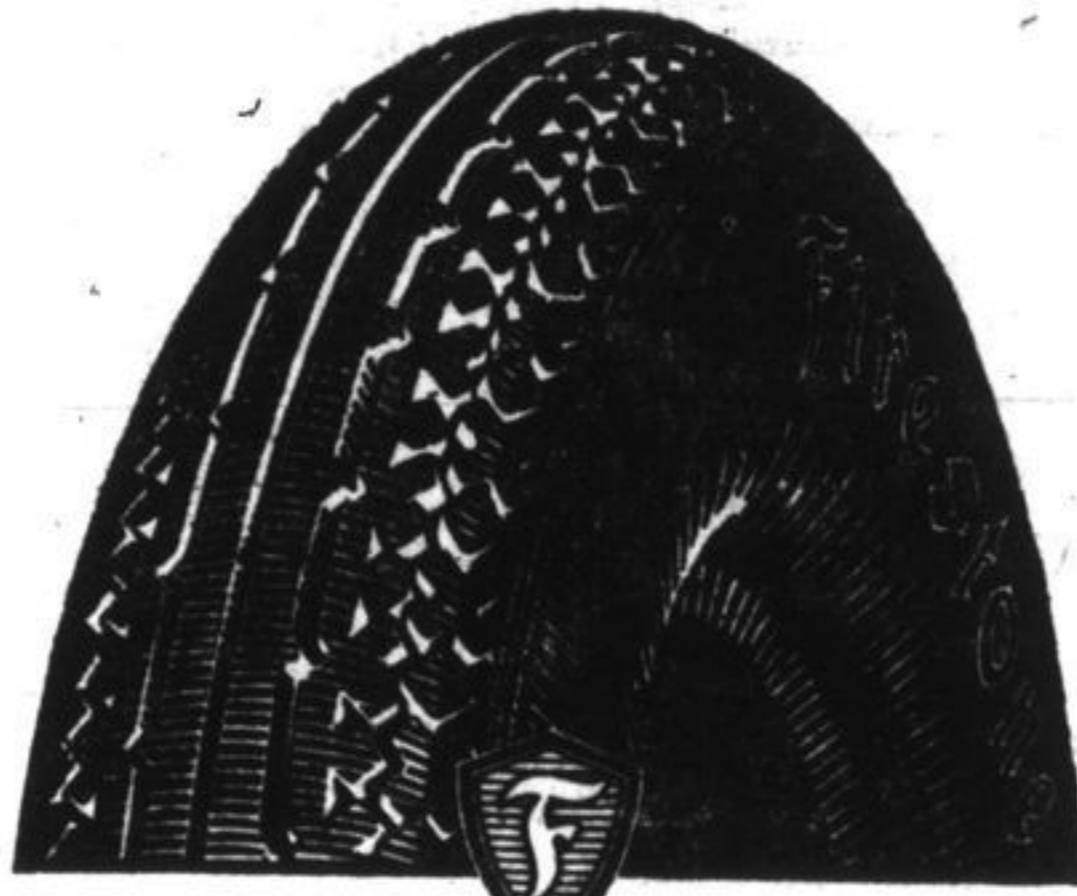
EDWARDS' AUTO SERVICE
25 MONTREAL STREET
PHONE 2344w.

**Be Sure You Get
Gum-Dipped
BALLOONS
Built Only by
Firestone**

Thousands of Firestone Balloon-equipped cars are rolling off many miles of splendid performance.

Car owners, everywhere, are praising the safe, skidless driving—the wonderful control—the luxurious comfort—the high mileage records

—the lower cost of motoring—the advantages made possible by the exclusive process of Gum-Dipping—the very foundation of balloon tire success.



For Gum-Dipping insulates every fibre with rubber—and adds great strength to each cord. Real balloon tires must have light, strong, flexible walls—Gum-Dipping gives this extra strength and flexibility.

Insist upon Gum-Dipped Balloons—full-size!

The Firestone dealer will make your changeover—do it quickly—at low cost.

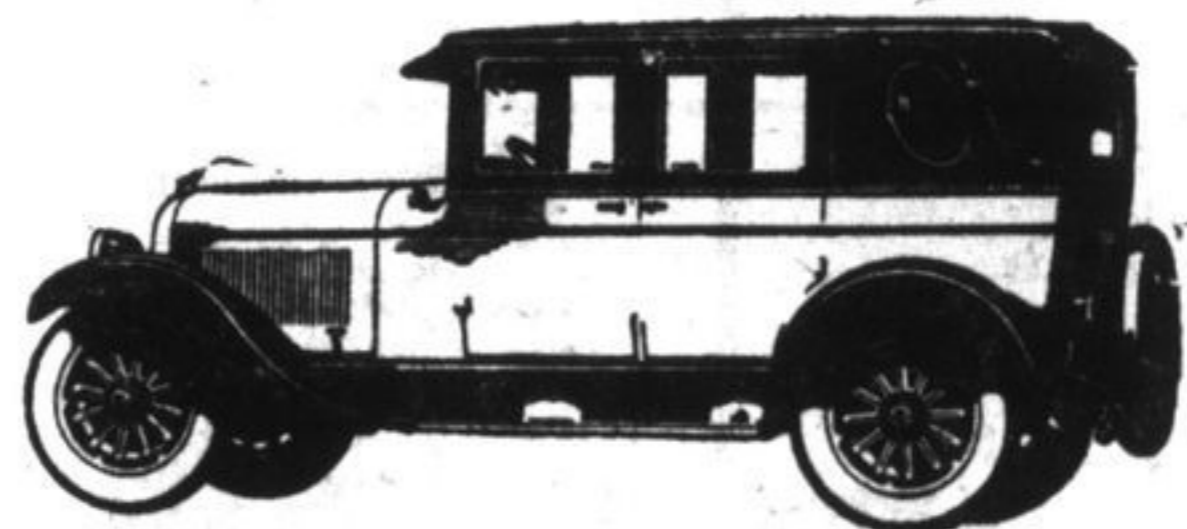
MOST MILES PER DOLLAR

THE ONLY GUM-DIPPED CORD MADE IN CANADA IS BUILT BY FIRESTONE

BOYD'S GARAGE

DISTRIBUTOR FOR FIRESTONE TIRES

129 BROCK STREET



The Crown-Imperial

Only One Car Delivers Results Like These

There is only one car that delivers Chrysler results and that car is the Chrysler Six itself. Consequently Chrysler popularity continues unabated. You are invited to study these results at first hand.

First you will observe that the tremendous power is vibrationless at all speeds. It represents a step forward in motor smoothness and efficiency as important as the overlapping power stroke of the six in contrast to the old two-cylinder—opposed engine.

You will also experience new riding

qualities. A new type of spring mounting, with rear springs mounted close to the hubs and parallel to the wheels, makes it possible to drive the Chrysler around turns at 50 miles an hour. Side-sway and road-weaving are eliminated.

All these qualities, as well as many other features that distinguish the Chrysler Six from all other cars, are properly appreciated only when you ride in the car. For that reason we are always eager to demonstrate Chrysler results. A telephone call is all that is necessary.

CHRYSLER SIX

CLARK BROS.
371 King Street. Telephone 2357f.



Colorado wife shot and killed her husband when he refused to come home to dinner. A quantity of beer in bottles, some jamies of the Maryland peninsula, was located by High Constable Peters of Kent, in a private motor camp near Wheatly, owned by Henry Long.



McLaughlin Buick owners are assured of prompt and efficient service on their cars—old or new models.

Central Garage
LIMITED

Brock and Montreal Sts.

We use only GENUINE PARTS

AUTOMOBILE REPAIRING
Cylinder Blocks honed separately if required.
Exide Battery Service Station.

ELLIOTT & WILLIAMSON

210 DIVISION STREET PHONE 1089.

SPRING IS COMING!!

Do not invite trouble by fixing an old Battery.

Avoid it by purchasing a new **MONARCH** for your Auto or Motor Boat.

Order NOW and help to keep KINGSTON MEN EMPLOYED.

Sold by all dealers. Guaranteed by the makers.

Monarch Battery Co. Limited
KINGSTON

ANNOUNCEMENT

COOK'S AUTO SERVICE

Announces the Opening Of its New Garage and Showrooms for DURANT, STAR AND FLINT CARS AND MASON ROADKING TRUCKS

QUEEN & BAGOT STS.

(Formerly the Blue Garage)

We will operate our former garage at 12-14 Queen Street as a Service Station.

Cook's Guaranteed Service At Both Places.

TELEPHONES - - 634-2768