

1847

Dress Well and Succeed

1925

DO YOUR CLOTHES REFLECT YOUR SELF RESPECT,

GOLF HOSE

GOLF SWEATERS



Our Golf Clothes

Tailored to Your Measure

We just ask the opportunity to show, you our display of Harris Homespuns, Donnegals, Bannockburns, Mahoneys and a very large range of Scotch Tweed effects so adaptable for sport purposes, which we

Tailor to Your Measure

AT PRICES THAT PLEASE,

LIVINGSTON'S

75-79 BROCK STREET

"IF OFF YOUR ROUTE, IT PAYS TO WALK"

A SUMMER COURSE IN LIBRARY SCIENCE

Is to Be Conducted at Queen's University by Dr. Nathan VanPatten.

Queen's University announces a 6 week's summer course in library science which will be conducted in the Douglas library from July 8th to August 19th. In nothing is the progress of the university reflected more than in the gradual addition of new courses and departments to the curriculum. Such a course as the one now announced would have been impossible under the arrangements prevailing in the old library, but the Douglas library contains unsurpassed facilities for library study.

The course will be intensive and practical. It is intended for persons wishing to enter for the first time upon library work, for library workers in school and public libraries who have had little or no formal training for students and teachers wishing systematic instruction in bibliography and for special librarians working in scientific and industrial libraries.

HON. GEORGE P. GRAHAM SPEAKS THIS EVENING

At the Big Liberal Rally in the City's Memorial Hall.

Great interest is being taken in the Liberal rally to be held in Memorial Hall at 8 o'clock Tuesday evening, when the chief speakers will be Hon. George P. Graham, minister of railways and canals, and Hon. Duncan Marshall, former minister of agriculture in the Alberta government, both of whom are orators and will have interesting messages for the people of Kingston and district. The programme will also include some local speakers.

An orchestra will be present and provide a choice programme of music during the evening.

An invitation has been extended to the members of the Women's Liberal Association and also the Liberals throughout the Kingston district, and a bumper crowd is expected to attend.

To Construct New Floors.

It has been decided that new hardwood floors will be put down in the first and second halls of Queen's old Arts building which at the present time is used by Queen's theological college and the department of biology. New floors will also be placed in three of the class rooms.

The biology department is located on the first floor while the Theological College is on the second floor of the building.

Theological Appointments.

Of the class which graduated on Monday evening at Queen's theological convocation, Mr. D. McInnis will go to an appointment at Foxboro, north of Belleville, Mr. N. R. Wright will complete his term with the union church at Portsmouth, Mr. R. Megaw will go to Ottawa presbytery and Mr. J. M. Miller to the charge at Bondfield for the summer.

To Speak in Ottawa.

Dr. Nathan Van Patten, librarian of Queen's university, is going to Ottawa to address the Ottawa Library Association on Saturday. His subject will be "Scientific and Industrial Research." Dr. Van Patten has recently published a book in which he has collected references in all current literature as well as in older books bearing on the subject of corrosion or rust of metals.

Hear Hon. George P. Graham and Hon. Duncan Marshall at Liberal Rally in Memorial Hall to-night.

A detachable fur collar that ties with a satin bow is a feature of some of the new coats, making them practical for early spring and summer alike.

"Willow Dale Bricks," Gibson's Empty the vacuum cleaner bag in a large paper sack instead of shaking it into a newspaper. This eliminates flying dust.

Dancing frocks of vari-colored chiffon give a lovely opalescent effect. They are newer than the shaded models.

Officers will be nominated at the Liberal Rally to be held in Memorial Hall to-night. All welcome.

"Strong Camphor Balls," Gibson's

DAILY MEMORANDUM.

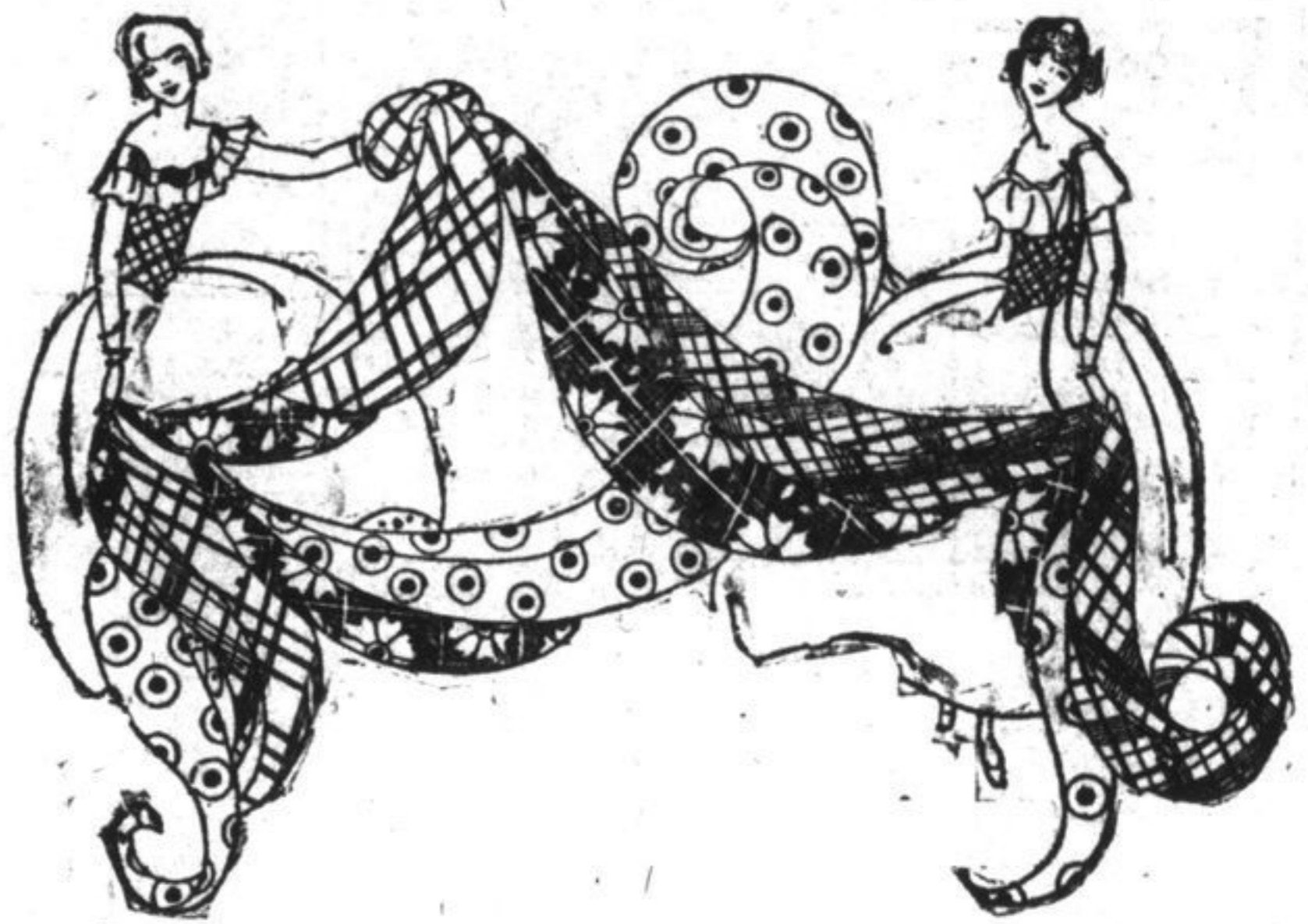
L.O.L. No. 4, refresh and dance, Orange hall to-night. Refreshments.

Refreshments.

PRINTING IN ALL ITS BRANCHES Moderate Prices Job Dept., BRITISH WHIG Telephone 2614

The Newest in Wash Fabrics

To Keep Your Sewing Machine Humming



Normandy Voiles 69c yd.

A large variety of shades in Normandy Voiles, 38" wide, in Orchid, Lavender, Crab-apple, French Rose, Powder Blue, Almond Green, Copen Blue, Nile Green, Harvest and Black and White . . . . 69c. a yard.

Colored Dress Linens, 90c & 95c yd

The newest in Colored Dress Linens, 36" wide. The smartest style materials for Spring and Summer wear, in shades of Harvest, Canary, Sand, Almond Green, Crab-apple, Pelican Gray, Tangarine, White, Orchid, Lavender, Copen Blue, in plain colors or stripes . . . . .90c. and 95c. yard

38" Ratines and Homespuns

Now is the time to make your selection of the popular dress materials in Ratines and Homespuns. The assortment of stripes, checks and overprintings is now complete and we advise you to make an early choice. The quality is excellent and popularly priced at \$1.00, \$1.25, \$1.50 and \$1.95 yard.

Dress Ginghams 25c and 35c yard

32" Dress Ginghams in all the newest shades of Checks, Plaids and plain Chambrays, in Black and White, Blue and White, Red and White, Lavender and White, Yellow and White, and many other colorings too numerous to mention. These Ginghams are of the best quality and priced at 25c. and 35c. yard.

English Broadcloths 95c to \$1.25 a yd.

The most popular material for the Summer Wash Dress is the English Broadcloth, 38" wide, in shades of Brown, Green, Lavender, Black, Orange, Navy, Canary, Tangarine, Yellow, in all the latest and newest stripes of contrasting colors. 95c. to \$1.25 yard.

Make Your Spring and Summer Dresses with the aid of the Deltor

What is the DELTOR? A wonderful dress-making guide, included with Butterick Patterns that shows you with pictures how to make each dress from start to finish. Buy your patterns at our Butterick Pattern Department, consult each pattern envelope for the kind and amount of material to use, and then visit our Wash Goods counter. Here you will find all the soft, new Spring and Summer materials in all the newest shades.

ANDERSON'S

MARKETS

CREAMERY BUTTER AND THE BEST 38c. lb.

MAIN STORE—Cor. Princess and Division Sts. PHONES: Retail Order Dept. . . . . 2900 Mr. Anderson's Office . . . . . 365v. Accountant's Office . . . . . 365j. Wholesale Department . . . . . 1787 BRANCH STORE—288 Princess Street. Phone 2481.

NEW SEASON'S Maple Syrup Quarts 60c. Gallons \$2.00

2000 lbs. Choice Dairy Butter Prints & Rolls . 34c

Fancy Milk-Fed Veal Stewing Cuts . . . . . 6c. to 8c. Fillet of Veal . . . . . 22c. to 25c. Crown Roasts . . . . . 22c. to 25c. Loin and Rib Roasts . . . . . 22c. Loin of Veal, chump end . . 25c. Rack of Veal . . . . . 18c. Shoulder Roasts . . . 15c. to 18c. Shoulder Chops . . . . . 18c. Loin and Rib Chops . . . . . 25c. Fancy Veal Cutlets . . . . . 35c.

Smoked Cottage Roll, per lb 29c Smoked Picnic Hams, lb. . . 23c. Smoked Ham—whole, lb. . 32c. Shank end, lb. . . . . 32c. Butt end, lb. . . . . 35c. Sliced, lb. . . . . 40c. Smoked Breakfast Bacon — By the piece, lb. . . . . 32c. Sliced, lb. . . . . 35c. Peamealed Back Bacon — By the piece, lb. . . . . 40c. Sliced, lb. . . . . 42c.

PUMPKIN 3 for . . . . . 49c. PEAS Special, ungraded— 18c., 2 for 35c. TOMATOES 3 for . . . . . 49c.

New Season's Spring Lamb Cut to order — Front quarters, hind quarters, Legs and Loins.

French Peas McLaren's Jelly Powders, Raspberry and Strawberry . . . . . 3 for 20c.

Palm Olive Soap 3 for 29c, 1 Free

Fresh Roasted Peanuts, lb. . . . . 15c. Dorothy Brand Evaporated Milk . . . 2 for 25c. Gold Dust Washing Powder . . . . . 3 for 15c. Floor Wax—Hawes' 1 lb. tin, reg. 35c., for 40c. Canned Pineapple, sliced, special, 2 lb. tin 25c. Orange Marmalade, 1 lb. glass jar . . . . 35c. Pure Fruit Jams—1 lb. glass jars . . . . . 25c.

OUTDOOR FRUIT AND VEGETABLE MARKETS ATTRACTIVE VALUES

Tuesday and Wednesday—1,000 dozen, large, ripe BANANAS—reg. 80c., for . . . . . 65c. Sweet Mexican Oranges, large size, regular 40c. Green, for . . . . . 35c. California Navel Oranges—Kiddies' size . . 24c. Medium size . . . . . 24c. Grapefruit, Sealsweet—special . . . . . 4 for 25c. Grapefruit, Sealsweet—reg. 12 1/2c., for . . 10c. Red Ripe Tomatoes, lb. . . . . 35c. Bread and Butter Onions, large bunch . . . 10c. 2 bunches for . . . . . 25c.

John Laidlaw & Son, Ltd. 170 Princess Street