

In the Automobile World

THE RESPONSIBILITY FOR AUTO ACCIDENTS

Mutual Realization of Responsibility Makes for Safety When Traffic is Heavy.

Mutual responsibility makes for safety, says A. B. C. Hardy, member of the Traffic Planning and Safety Committee, N. A. C. C., and well known in the trade, in a recent article. The most careful driver of a motor vehicle is never safe from the danger of injuring the careless pedestrian; and the most careful pedestrian is never safe from the danger of being injured by the careless driver.

What we are aiming at, in the work that is being done by so many organizations interested in establishing improved safety conditions, is to secure real co-operation from every one concerned in the production and operation of motor vehicles. The maker, the driver and the pedestrian are all responsible; and public safety depends very largely on how their responsibilities are assumed.

Maker's Duty.

The automobile maker owes it to himself, as well as to the public, to make his car safe to drive; this means that it must be strong, that it can be promptly stopped in emergency, and that due notice of its approach is given, day and night. Increased factors of safety, improved brakes, dependable lights and signals are the rule in automobile manufacture. It has come to be a matter of course that the modern automobile will deliver mileage in safety over a long period of time.

The driver owes it to himself to have his vehicle under control at all times. He must know that his brakes are working and must have more interest in them than in his accelerator. Nowadays, the average driver is sane; he knows the distance in which he can stop his car at various speeds, and he keeps within the speed called for by conditions. The driver with his car under definite control keeps out of court, out of jail, out of the hospital, and out of the clutches of remorse for unavoidable accidents.

The Pedestrian.

The pedestrian owes it to himself to walk alertly; to observe traffic regulations, and have his safety in mind; to remember that there are very few accidents nowadays that occur in traffic in which the pedestrian is wholly free from blame.

Starting The Long-Idle Engine

Re-Installing The Battery

THE BATTERY, which is almost always removed from a laid-up car, should be replaced just as it was taken out, so far as the positions of its positive and negative terminals are concerned, and should be securely fastened into position by the hold-downs or other means provided. If it be left loose it will be injured. Its terminal posts and the insides of the cable clamps should be scraped clean, the clamps attached and tightened securely and the parts then coated with vaseline. All switches should be "off" when this is done and if a spark is produced when a clamp is touched to a terminal post, the connection should not be permanently made, as a leak in the wiring is thereby indicated.

Watching For Oil Circulation

When the engine has been gotten into action, by means of the starter, the oil pressure-gauge should at once be consulted and if pressure is not indicated within a minute, the engine should be shut down and the trouble located. If the oil pump has become air-bound, as it may have done—especially if the oil-pan was emptied at laying-up time, additional oil should be supplied from a can into the system, through the capped or plugged orifice provided for this purpose, for instance, at the oil relief-valve or by-pass. This applies especially to pumps that are not located in the oil pan.

Oil Pressure Must Be Normal

Upon the establishment of oil pressure, unless it is of normal amount, investigation is in order, for if it is higher than it should be, considering speed, temperature and other factors, obstruction of certain oil passages to bearings may be suspected and if it is too low or fluctuating, clogging of the strainer may be indicated. If the engine has overhead valves, not automatically lubricated, they should receive a thorough hand oiling or greasing at once and if pocketed valves are used, it is well to remove the valve-compartment cover and oil everything therein with a gun, before starting the engine, as these parts may become pretty gummy after long disuse.

OBSTRUCTED RADIATOR PASSAGES



from a garden hose. Otherwise the passages are obstructed.

BATTERY QUESTIONS



J. F. E. writes: The cooling system of my car gives serious trouble from overheating, and water is freely sprayed from around the radiator filler-cap when speed reaches 25 m. p. h. This makes me suspect that circulation is impeded, but my mechanic says that this is not the case. I have to refill the system four or five times in a 150 mile trip. Please give me your opinion.

Answer: No doubt you are right as to the cause of this trouble, for if there were no obstruction, the pump would not build up pressure in the top of the radiator sufficient to spray out water. The presumption is that the radiator passages are clogged and we suggest that you clean the radiator with soda solution and that, if this is not effectual, you have it treated by a professional radiator repairer. With both upper and lower rubber connections detached and the inflow plugged, water should run out the outflow in a full stream, when it is supplied to the filler opening.

Questions of general interest to the motorist will be answered by Mr. Clough in this column, space permitting. If an immediate answer is desired, enclose self-addressed, stamped envelope.

The absent-minded pedestrian, or the untrained pedestrian, constitutes a grave element of danger. And training should begin with a

child as early as he is able to walk. It should be constantly continued at home and at school.

There is a mutual responsibility—and mutual penalty. Many people suffer in every accident, not alone those immediately involved.

Communities and organizations everywhere today are spending time and thought and money in undertaking to regulate traffic so as to protect property, limb, and life. But no amount of effort can result in wholesale protection unless everybody co-operates. The thoughtless man, in the driver's seat or in the highway, will always be a menace to himself and to others; constant education will make for co-operation and this, in turn, for safety.

A CHEAP REPAIR FOR CLUTCH SLIP

On some cars which have been in service for years, trouble is sometimes experienced with the continual slipping of the clutch. This is generally due to oil leaking into the clutch housing from the crankcase, through the end bearings. The proper way to prevent this leakage is to properly fit the bearings.

However, on an old car, the owner may feel that the expense involved will not be justified. In such cases, the following simple arrangement often gives good result: A heavy felt or leather washer is placed over the breather pipe cap, so that when it is screwed down tightly it will be air-tight.

A piece of small copper tubing is then attached between the breather pipe and the intake manifold. In this manner, whenever the engine is running, a partial vacuum is created in the crankcase, which is of sufficient strength to keep the oil from running out of the bearing.

One-Fifth Laid To Auto.

Practically one-fifth of all fatalities from accidents in 1935 were the result of automobile mishaps, according to the United States Department of Commerce. The total number of fatalities was 74,131, of which 14,411 were auto accidents.

Care of the Battery.

An occasional examination of the storage battery is essential to its continuance of performance. If the separators have ceased to function, the plates will suffer, short circuit and buckle, finally destroying this costly element.

To Remove Broken Bolt.

When the head of the bolt is broken off, the broken part can be removed by cutting a slot across its face with a back saw. A screw-driver is all that is necessary to remove the remaining part of the bolt.

Kerosene squirted over the distributor coils and spark plugs will keep water from causing a short circuit. Distributor points and spark plugs should be cleaned and spaced every 30 days to give best results.

NOTICE TO CAR OWNERS

Have your car inspected and gone over before the spring rush.

We absolutely guarantee all work done.

EDWARDS' AUTO SERVICE

25 MONTREAL STREET
PHONE 2844w.

MONARCH SPRING IS COMING!! MONARCH

Do not invite trouble by fixing an old battery.

Avoid it by purchasing a new MONARCH for your Auto or Motor Boat.

Order NOW and help to keep KINGSTON MEN EMPLOYED.

Sold by all dealers. Guaranteed by the makers.

Monarch Battery Co. Limited
KINGSTON

FOR TEN YEARS—DEPENDABLE

Exceptional dependability has been a characteristic of Dodge Brothers Motor Car since the day the first of these sturdy cars was marketed.

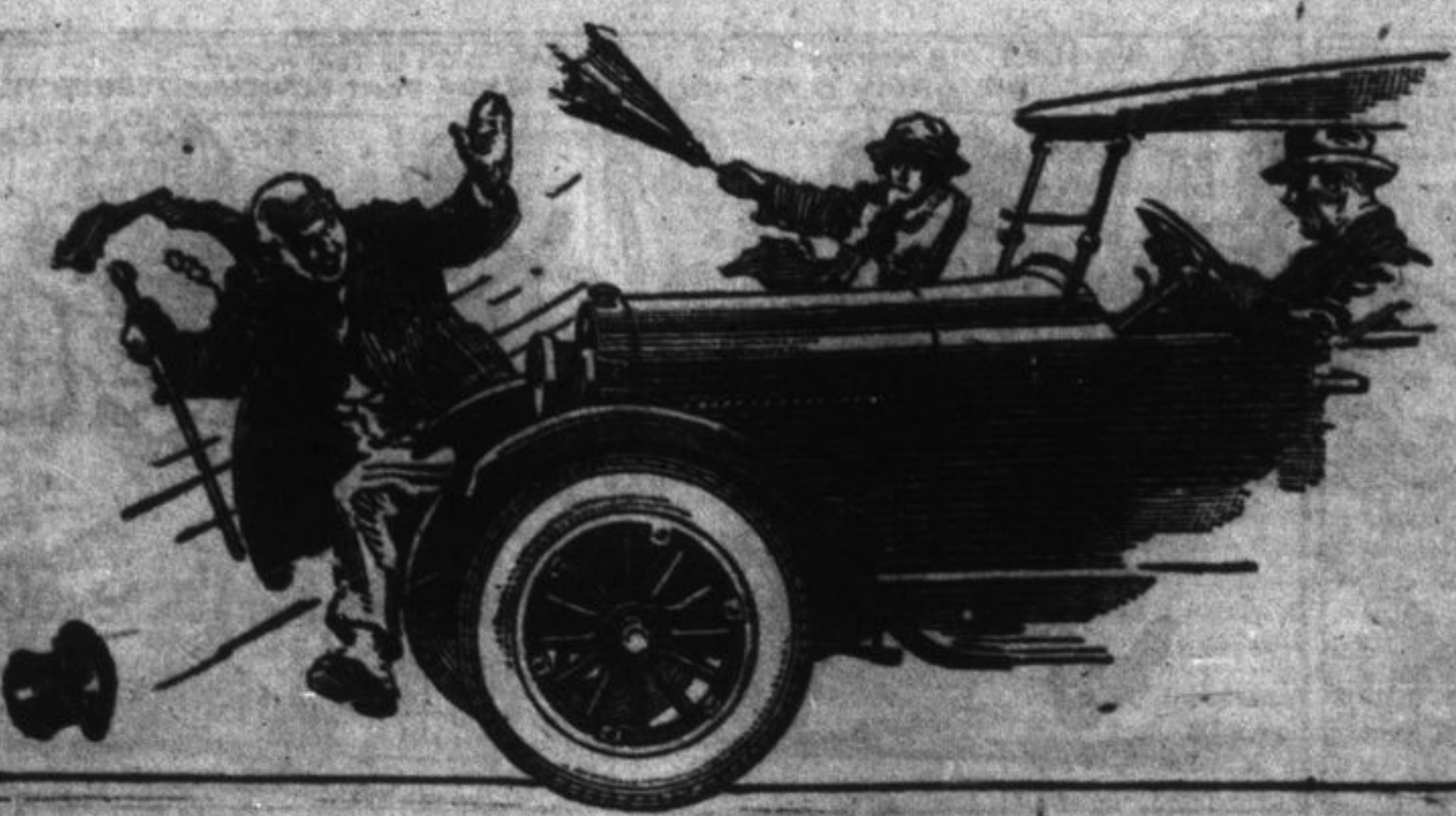
Not once in a decade has it failed to uphold and enhance its reputation for faithful performance.

The reason for its consistent goodness and continued betterment points directly back to the ideals of the founders.

Instead of fluctuating between an endless series of annual models, they determined to concentrate on the perfection of a single chassis.

Dodge Brothers Motor Car today is the embodiment of that ideal—an ideal that will endure as long as the institution itself.

M. OBERNDORFFER
124 CLARENCE STREET.



WILLYS-OVERLAND FINE MOTOR CARS

\$105
REDUCTION
MAKES OVERLAND

World's lowest priced four door Sedan

with Sliding Gear Transmission



The most widely talked about closed car of the year... a tremendous value at an amazingly new low price... unit power plant brimming with big power... the advantages of an advanced disc-type clutch... wonderful riding smooth-

ness, with patented Triplex Springs... reliable, rugged axles and a sturdy chassis... rich upholstery... extreme economy in upkeep... a car light in weight and beautifully balanced... see it... and ask about the easy terms.

OVERLAND

ARTHUR CALLAGHAN
210-214 Wellington St.,
Kingston

A Top Repair.
Shellac is the best substance to use in top repairs. Clean the torn parts thoroughly and then roughen slightly with sandpaper. The patch is applied by using the shellac as a cement, pressing the patch down firmly.

Never stop on the road to carry on a conversation with a friend. Invite him into the car and keep moving.
Ignition breaker points must be set correctly. A clean flat surface is very important.

ROICE RADIO TUBES \$2.75

Universal Tire and Battery Service,
284 Ontario Street (Corner Queen Street) Phone 681.

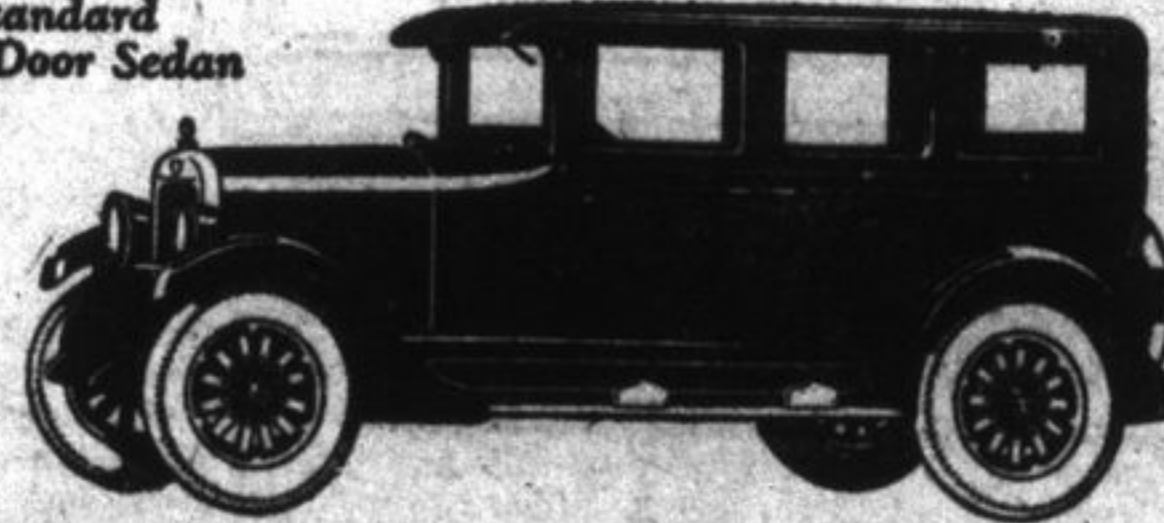
AUTOMOBILE REPAIRING

Cylinder Blocks honed separately if required.
Exide Battery Service Station.

ELLIOTT & WILLIAMSON

210 DIVISION STREET PHONE 1089.

Standard Four-Door Sedan



More for the Price Than You Ever Bought Before

The popularity of the new good Maxwell has simplified the buyer's task, for such marked public favor is sure indication of definite superiorities thoroughly demonstrated.

Some of these superiorities you will see at a glance the first time you look at a new good Maxwell. You'll note, of course, that in good looks, fine appointments and roomy comfort the new good Maxwell gives more than you were ever able to buy before at the price.

You'll learn, also, how the new good Maxwell is made and built, almost to the smallest detail—all in the great Maxwell plants. You'll appreciate how

much that means in greater quality, reliability and economy.

But neither we nor any good Maxwell owner can give you an adequate idea of how much finer this car is in results than any four you have ever known. You must experience these results for yourself.

When you have driven the new good Maxwell 58 miles an hour, rushed from 5 to 25 miles in 8 seconds and enjoyed its remarkable ease of riding, you will begin to understand how superior in values this car really is. We are eager to prove these Maxwell superiorities in a demonstration.

We are pleased to extend the convenience of time payments. Ask about Maxwell's attractive plan.

CLARK BROS.
371 King Street. Telephone 2357f.

The New Good
MAXWELL