

# Steacy's Fall Fare Refund and Mail Order Comparison Sale

Starts Saturday and continues throughout Fair Week

This great annual event offers many exceptional economies on wanted, new, seasonable merchandise. Every department is represented in this great store-wide sale event, and stocks are now at their best.

## We Refund Fares to Out-of-town Customers

No matter what your conveyance or the distance you come from—one way or return—according to the size of your purchase. All refunds made in cash. Full particulars gladly given at information bureaus on the Main and Second Floors.

### Flannelette Night Gowns

At 98c., \$1.39, \$1.49, \$1.69

75 doz. White Flannelette Night Gowns, made of good quality Flannelette in regular and extra large sizes. The styles are high-neck and long sleeves and round neck with kimona sleeves. Outstanding values in the trade at these special sale prices.

### Satinette Bloomers

\$1.39 PAIR

300 pairs of English Striped Satinette Bloomers in colors Pink, Mauve and Blue—well made and reinforced to give maximum wear. Reg. \$1.75.

### PENMAN'S SILK AND

Wool Hose  
98c. PAIR

360 pairs of Penman's Silk and Wool Hose, in colors Black, Brown and Grey—sizes 8½ to 10. Regular \$1.50 pair.

### Black Cashmerette Hose

25c. PAIR

600 pairs of Black Cashmerette Cotton Hose—all sizes—8½ to 10. Regular 35c. pair.

### ENGLISH WOOL

Sport Hose  
\$1.00 PAIR

296 pairs, imported English All Wool Sport Hose—the colors are Sand, Beige, and Grey. Regular \$1.50 values.

### English Silk and Wool Hose

\$1.49 PAIR

288 pairs, Silk and Wool Hose in colors Black, Grey, Brown, Beige and Sand—all sizes. Regular \$2.00 values.

### Boys' Wool Golf Hose

75c. PAIR

240 pairs, pure All-Wool Golf Hose with fancy roll top—in the wanted heather and lovat shades. Regular \$1.25 pair.

### Children's School Hose

25c. PAIR

480 pairs, of Ribbed Cotton School Hose, in colors Black and Brown. Sizes 6 up to 9½.

### Carpet Sweepers

\$2.48 EACH

24 only, imported Carpet Sweepers, fitted with extra good brush, cyco bearings and steel casing. Regularly sold at \$4.25 each.

### Flannelette Blankets

\$2.98 PAIR

800 pairs of lbex first quality, largest double-bed size Flannelette Blankets, in Grey and White, with colored borders of Blue and Pink. Regular \$3.75 pair.

### Bed Comforters

\$2.98 EACH

50 Chintz Covered Cotton-Filled Bed Comforters—good size and weight—regular values at \$3.75.

### Curtain Scrim

13c. YARD

2,000 yards of White and Cream Curtain Scrim with finished borders—full 36 inches wide and sold regularly at 18c. and 20c. a yd.

### Japanese Mats

67c. EACH

60 Jap. Bedroom Mats—sized 2½ x 4½ ft, in a good choice patterns and colorings.

### Rubber Stair Treads

15c. EACH

200 Rubber Stair Treads in Brown, Mahogany shade with corrugated surface—size 7½ x 18 inches.

### Wool Tapestry Rugs at

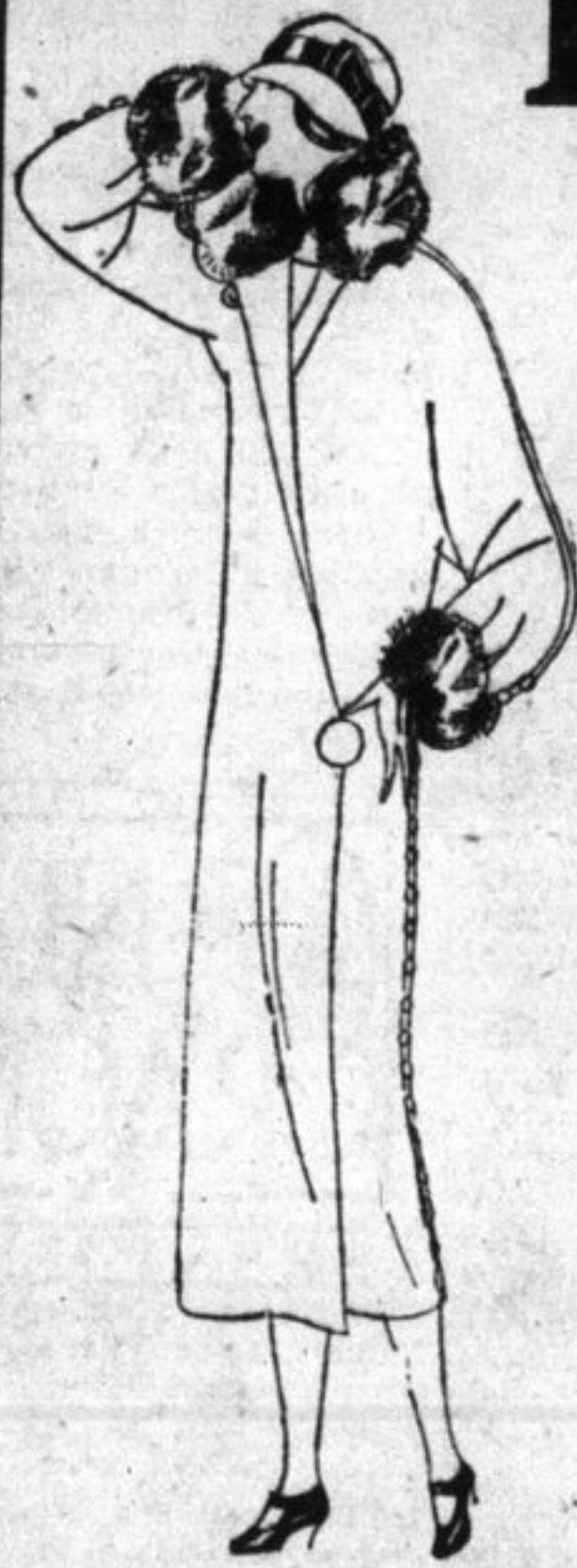
\$20, \$22, \$25 EACH

36 Seamless Tapestry Rugs, all new designs and colorings in Floral, Oriental and Conventional patterns. The sizes are 2½x3 yds., 2½x3 yds. and 3x3 yards.

### Chintz Covered Cushions

39c. EACH

60 Novelty Chintz Covered Cushions, well filled with sanitary Cotton Filling—regular 60c. values.



## 1000 NEW WINTER COATS

The largest, best assorted and most popular priced showing in Eastern Ontario. Let us prove this statement to your satisfaction by a comparison with all other values.

Every new style is included in this stupendous showing of Fur-trimmed and Un-trimmed models—and every new fabric such as Flamingo, Cut Velours—and Duvels, Marvellas, Pan-Doris, Camel-Hair and Normandy Cloths in a full range of new shades.

PRICES RANGE AS FOLLOWS:

from \$14.95 to \$19.95  
\$22.50 to \$29.95  
\$32.50 to \$39.75  
\$45.90 to \$75.00

others up to \$150.00

## New Tailored Suits

100 beautifully Tailored Poiret Twill, Tricotine and Charmeen All Wool Cloth Suits. Every Suit is handsomely lined with Silk, Satin and Crepe. Navy Blue and Black are the season's favored shades for Fall—and the straight-line Silhouette is most noticeable.

Priced from \$27.50 to \$50

## New Fall Dresses

800 new Dresses for Street, Afternoon and Evening wear, offers an easy solution for the woman with a new Fall Dress in view. Dresses of Flannel, Poiret Twill, Charmeen, Crepe-back Satin, Georgette and Trico-Sham are here in an endless variety of style and color.

Priced from \$9.75 to \$75.00

## Autumn Millinery

A new Hat or two is essential to top off your new fall wearing apparel! Our showing is most complete and offers a broad choice. The popular Cloche is as much to the fore as ever, as well as many new shades and fabrics in higher-crowned Directoire models, which New York has stamped with her approval.

Priced from \$6.50 to \$25.00

New Waists and other Dress Accessories are complete in detail at popular prices throughout.

### Table Damask

98c. YARD

200 yds. of extra heavy, Bleached Table Damask, full 66 inches wide—all new Linen Damask patterns. Regular \$1.50 yd.

### Linen Table Cloths

\$3.98 EACH

24 only, pure Linen Table Cloths—size 64x64 inches—new patterns just received. Regular \$4.75 values.

### Linen Towelling

5 Yards for \$1.00

500 yds. of extra heavy, pure Linen Towelling—regular 25c. a yard.

### Linen Huck Towels

43c. EACH

25 doz. pure Linen Huck Towels—size 18x36. These are special values at 60c. each.

### White Terry Towels

48c. EACH

25 doz. White Terry Bath Towels with Colored borders of Blue and Pink. Size 20x40. Regular 65c. ea.

### Wabasso Pillow Cotton

43c. YARD

300 yards of the celebrated Wabasso Pillow Cotton in 40, 42 and 44 inch widths. Regular 50c and 55c. yard.

### Bleached Sheeting

At 49c. and 50c. YARD

1,000 yards of heavy, Bleached Sheeting, in seven and eight quarter widths—regular 60c. and 75c. a yard.

### Pillow Slips

49c. EACH

25 doz. Hemstitched Cotton Pillow Slips, with a fine linen finish. The widths are 40, 42 and 44 inches. Regular 60c. each.

### Unbleached Cotton

25c. YARD

2,000 yards of extra heavy fine, needle-finished Grey Cotton, full 38 inches wide and worth 35c. a yard.

### Men's Fleeced Lined Underwear

90c. EACH

50 doz. Penman's Fleeced Lined Shirts and Drawers—extra fine quality. Sizes from 34 to 44.

### Men's Merino Underwear

\$1.00 EACH

35 doz. Penman's Natural Merino Shirts and Drawers—a nice, soft, non-irritating quality of medium weight. Sizes 34 to 44.

### BOYS' WOOL SCHOOL SWEATERS

89c. and 98c.

25 doz. All Wool Pull-over Sweaters in the brown heather. Sizes 26 to 32. Regular \$1.25 each. 15 doz. Brown Heather Sweater Coats with Shawl Collars. Sizes 26 to 32.

### Men's Wool Sweaters

\$2.29 each

18 doz. V neck Wool Cardigan Sweaters in colors Grey, Heather and Fairway Green. All Wool—sizes 34 to 44. Regular \$3.00 values.

### Men's Wool Sweaters

\$1.89 EACH

144 All-Wool Sweater Coats in brown heather with Shawl Collars. Sizes range from 34 to 44. Regular \$3.00 each.

### Ladies' Winter Vests

75c. EACH

600 Zenith Fall and Winter weight Vests, with long sleeves, in cream only—a regular \$1.00 value.

### LADIES' BLOOMERS

90c. PAIR

360 pairs of Fleece-lined Bloomers, in colors Grey, Navy, Beige, Black and White. All sizes. Regular \$1.25 pair.

### STEACY'S SPECIAL CORSETS

69c. PAIR

300 pairs of Steacy's Special Corsets in the \$1.00 value in the trade—two models in Flesh and White—with four strong elastic garter supports and reinforced fronts. All sizes up to 28.

### STEACY'S SPECIAL WOOL

12½c. BALL

3,000 one-ounce balls of Two and Four Ply Knitting Wool in eighteen of the new Fall shades. A special value at 15c. a ball.

# STEACY'S - Limited

"KINGSTON'S SHOPPING CENTRE"