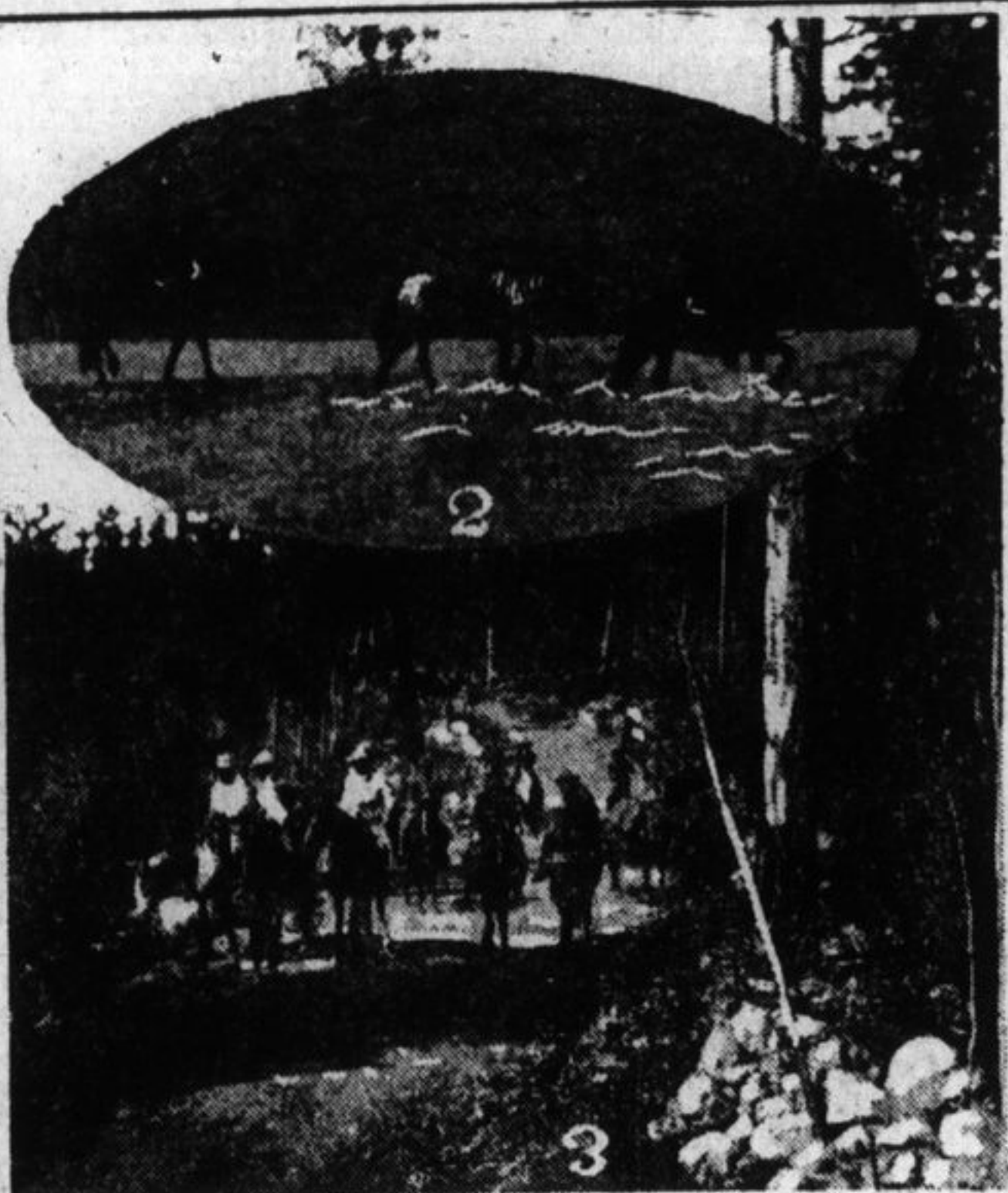
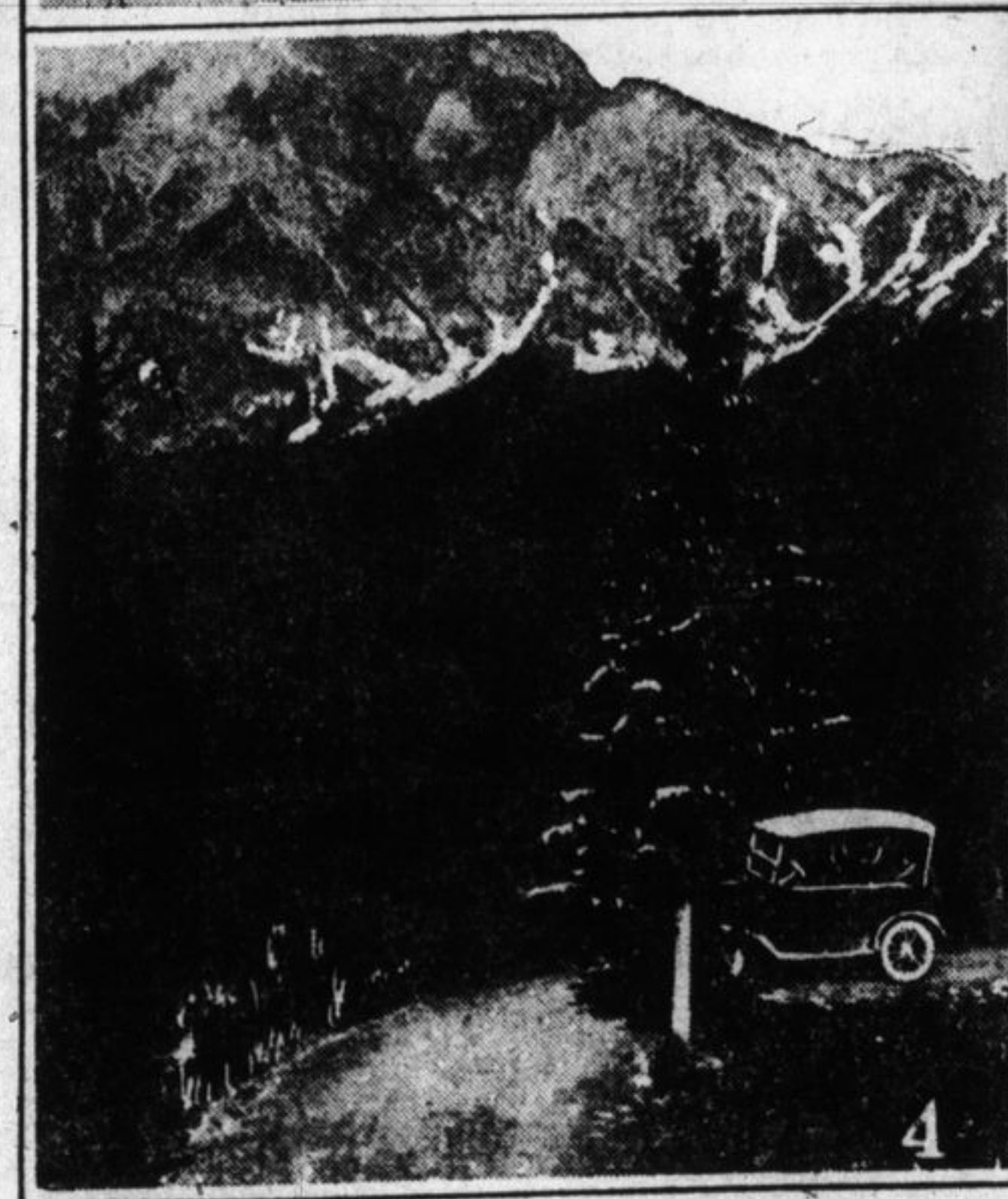


IN THE AUTOMOBILE WORLD

BY MOTOR AND PACK HORSE THROUGH CLOUD WONDERLAND



For the man or woman in search of healthful recreation, rest for jaded nerves, and a thoroughly enjoyable holiday, the world offers nothing more entrancing than a holiday in Jasper National Park, Canada's wonderland of scenery, where mountain, crag and torrent vie with one another in claiming the attention and where scenic nature is at her best. Towering peaks rise to the north, south, east and west; mirrored in the beauty of placid lakes whose shores provide shelter for the myriad wild life for which the largest of all Canada's National Parks is famous.

Whether the tourist goes sight-seeing by motor car or by the more romantic pack pony, Jasper National Park offers him the best that can be found anywhere. Motor roads and pack trails radiate in every direction from Jasper Park Lodge, the magnificent cabin hotel of the

Canadian National Railways, and the tourist may engage either ponies and guides or an automobile, and thus see the mountains at his pleasure.

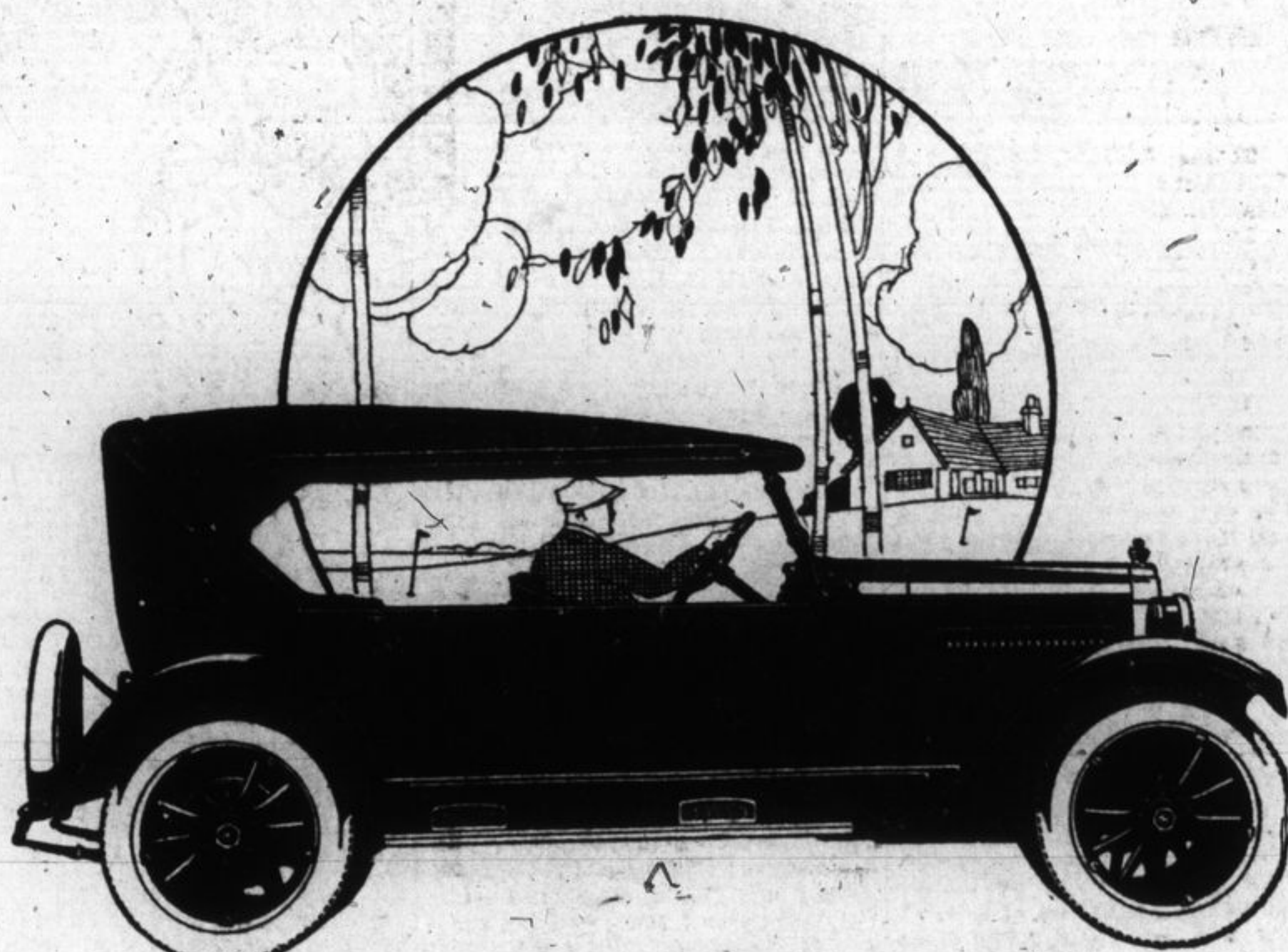
Mount Edith Cavell, named to honor the memory of Britain's heroic nurse, rises by the side of Mount Sorrow, within a short drive of the Lodge, and is one of the favorite drives of visitors to the Lodge. The Cavell highway, smooth-surfaced, winds up toward the very foot of the Ghost Glacier, presenting to the visitor a new vista of scenic wonders at every turn. As one rides toward the foot of the glacier, the Athabasca Valley far beneath presents an attractive picture of calm loveliness, while here and there a lake, reflecting blue sky and sunshine, adds its touch to the beauty of the landscape. There are other drives which may be taken in comfort—one may go in an hour for instance, to the wonderful Maligne

Canyon, one of the natural wonders of the entire Rocky Mountain region, where rushing waters go tumbling and boiling through a narrow aperture below the feet of the tourist as he or she stands on one of the footbridges which span its narrow width. At any turn of the road the visitor may find himself face to face with a bear or a deer, walking calmly across the highway, while on the sides of the mountains he may see mountain sheep or goats grazing.

The tourist to whom riding appeals will find plenty to hold his attention. Pack trails may be followed for miles. When in the company of an efficient guide, one may set forth to explore regions which are beyond the reach of the motor tourist. The wondrous Maligne Lake and Medicine Lake, with their quota of mountains reaching down almost

to the water's edge, draw more and more tourists every year.

For years the wonder of Canada's National Parks have been better known outside of Canada than they have been to Canadians, but year by year Canadians themselves are realizing that they have, in their own country, scenic attractions which are not surpassed anywhere in the world, and consequently the number of Canadians registering at Jasper Park Lodge is showing remarkable increases. Comfortable, steam-heated cabins are provided for their accommodation, an excellent cuisine is maintained at the main Lodge, where surroundings and service are of the world-famous Canadian National Railways standard, and every care is taken to see that visitors to Canada's largest and finest National Park enjoy their outing to the full. Satisfaction is the keynote of the service.



The Motor-Wise and Money-Wise are turning to the Knight

Men who have driven different makes of cars and who have learned what to look for, are turning to the Willys-Knight. They have tired of annually trading in their old cars for new ones—and have made up their minds finally to own a car they can keep and enjoy for years.

Years only season the Willys-Knight. The longer you drive it the more you are proud of it. The wonderful Willys-Knight sleeve-valve engine is quiet as a whisper—and it actually improves with use!

Willys-Knight owners report 50,000 miles and more without ever a mechanic touching the engine. You may never want to drive all over the map, as many Willys-Knight owners do—but it is a mighty big satisfaction to own a car with an engine that has never been known to wear out. Certainly a wonderful investment!

There are seven beautiful Willys-Knight models, ranging from the roadster with its long, graceful, sweeping lines to the sedans, distinctive and luxurious, each priced within reach of the man of moderate means.

WILLYS-KNIGHT

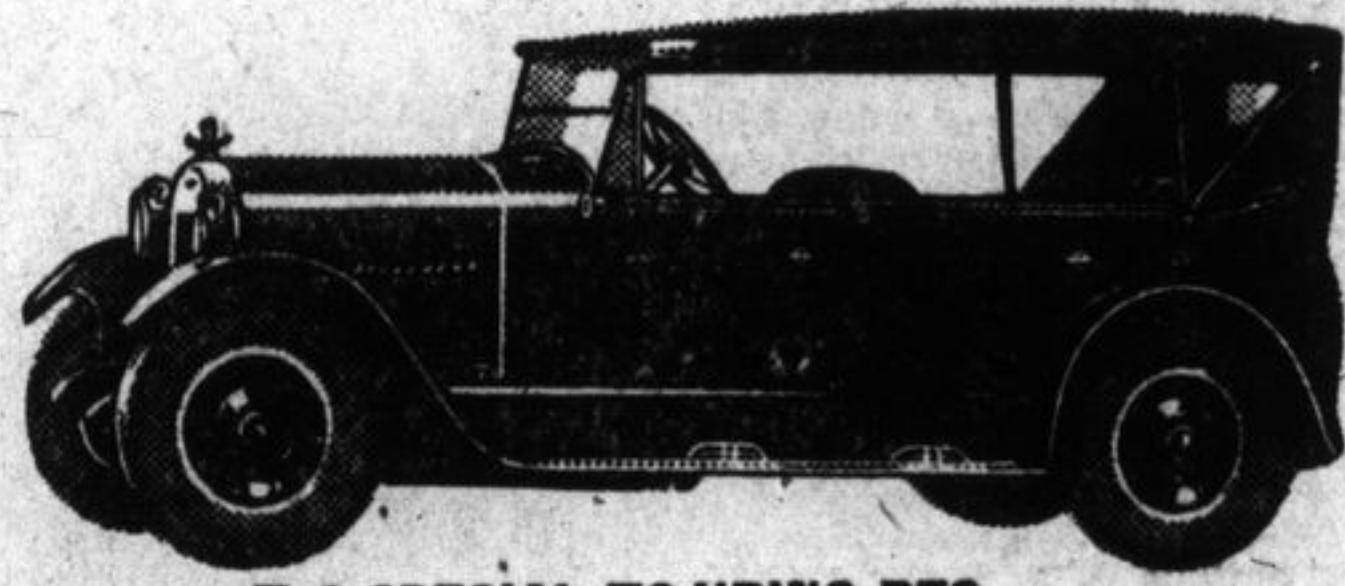
Touring \$1725

ARTHUR CALLAGHAN
210-214 Wellington Street, Kingston

Did You Know?
That you can try semi-balloon tires on the rear wheels first as an experiment if you do not wish to invest in a complete set without giving them a trial?
That the throttle should be open-

ed fairly wide in starting, in order to have it cause as little interference as possible to the spray of raw gas? If the throttle is only slightly open the raw gas will strike against the throttle valve, collect together again and run back into the carburetor.

T-6 SPECIAL TOURING ADDED TO THE REO PASSENGER LINE



T-6 SPECIAL TOURING REO

A jaunty model, completely equipped with having balloon tires as standard equipment, made its bow this week when the "T-6 Special" Touring Reo was announced by the Reo Motor Car Company. This model, which replaces the Phaeton Reo is the first of the popular line of passenger cars on which balloon tires have been made standard. Reo has been offering balloon tires as optional or selective equipment at additional cost, on all closed cars for several months.

Mechanically the T-6 Special Touring, as its name indicates, has for its power unit the time-tried and refined T-6 engine on which the Reo Motor Car Company has standardized for its passenger line and its taxicab. The chassis, too, is the standard mounting for both the open and closed Reos, including such features as the double-frame seating for the engine, dual foot control, and oversized brakes.

Two options are offered with the new model. It may be finished either in the standard Reo Blue or in the color known as Reo Deep Gray. Its upholstery may be either a gray Spanish leather or the standard black leather.

The lines of the model, suggesting a thoroughbred, alert and filled with energy, were designed to express outwardly the mechanical characteristics and ability of the Reo. The low-hanging effect not only adds to the car's road-holding tendency, but also expresses this characteristic of the model. A certain sturdiness which means reserve power to fill every need is indicated by the close-coupled, low outlines of the body.

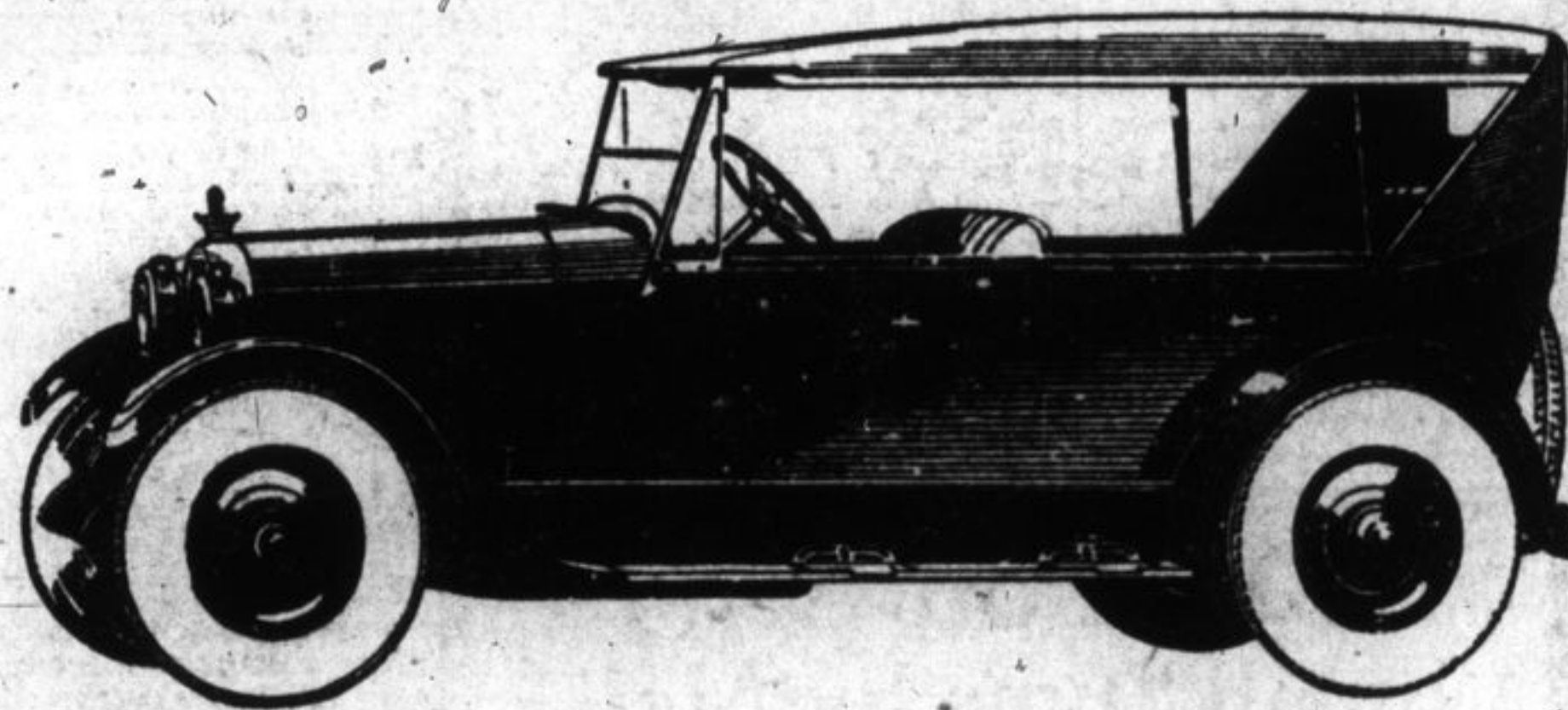
Fleetness is expressed by the harmony that exists in the complete assembly.

Many of the extra appointments which add comfort to the lot of the motorist are included as standard equipment with the T-6 Special Touring. On the nicked radiator is mounted a winged radiator cap topped with a Motometer. Drum-type headlights with nicked balls are used on the model as are step-plates and the side-wing windshields. In addition to the regular equipment on the dash, a cigar lighter and an electric clock are included.

The entire job is enhanced in appearance and serviceability by the balloon or "comfort" tires and disc wheels. It is priced with all equipment, plus freight, all taxes paid.

Price Tag on Safety.
Depreciation, that worry of car owners, is much less feared if considered as the price of safety. Every new car that comes on the market or new model of standard make, is safer than its predecessor, both in construction and in new features of design. When a motorist decides to sacrifice his old car in order to acquire the new, he is, in effect, investing in additional security on the streets and highways. It is somewhat the same principle that encourages a business house to tear down its frame building and erect a fireproof structure.

He who laughs overmuch may have an aching heart.
A silent man's words are not brought into court.



Canadian Touring Means More with Balloon Tires

BALLOON tires supplement the natural buoyancy of the new Touring Reo. To careful car balance, low hung chassis and gently resilient springs is added the riding ease which accompanies travel on low-pressure air.

REO

- The Reo Line
4-Passenger Coupe
5-Passenger Sedan
4-Door Brougham
Touring Car
Speed Wagon
Reo Taxicab
Passenger Bus
Speed Wagon
Parcel Delivery

Powered, and with inbuilt endurance qualities for long distance travel, the Touring Reo has flexibility and ease of control for the tangles of traffic. Dual foot control, oversized brakes, smooth steering and fingertip position of controls—all contribute toward safe and easy driving anywhere.

An abundance of comfort is insured by extra tonneau roominess, superb upholstery, large-dimensioned cushions and metal-framed storm-proof curtains.

REO MOTOR CAR COMPANY OF CANADA, LIMITED
WINDSOR, ONTARIO

Boyd's Garage Ltd.
129 Brock St.

We Can Re grind Your Cylinders

square with the base round and true with a heavy duty cylinder grinding machine, giving perfect work in every respect.

Automotive Grinders Limited
225 Wellington Street

Auto Tops and Seats Recovered

Side Curtains, All Kinds of Bevelled Glass Lights

R. SINCLAIR
300 BARRIE STREET
PHONE 1084.

Willys Knight

Canada's Most Popular Car

ARTHUR CALLAGHAN

Distributors

210-214 Wellington Street

THE MONARCH BATTERY

Has proven its high qualities. For that reason the leading dealers recognize its superiority, and now stock them and recommend them to Automobile Owners and Radio Fans.

Ask for the Monarch

MADE IN KINGSTON.

The Monarch Battery Co. Limited

275 ONTARIO STREET, KINGSTON, ONT.
PHONES 836-837.