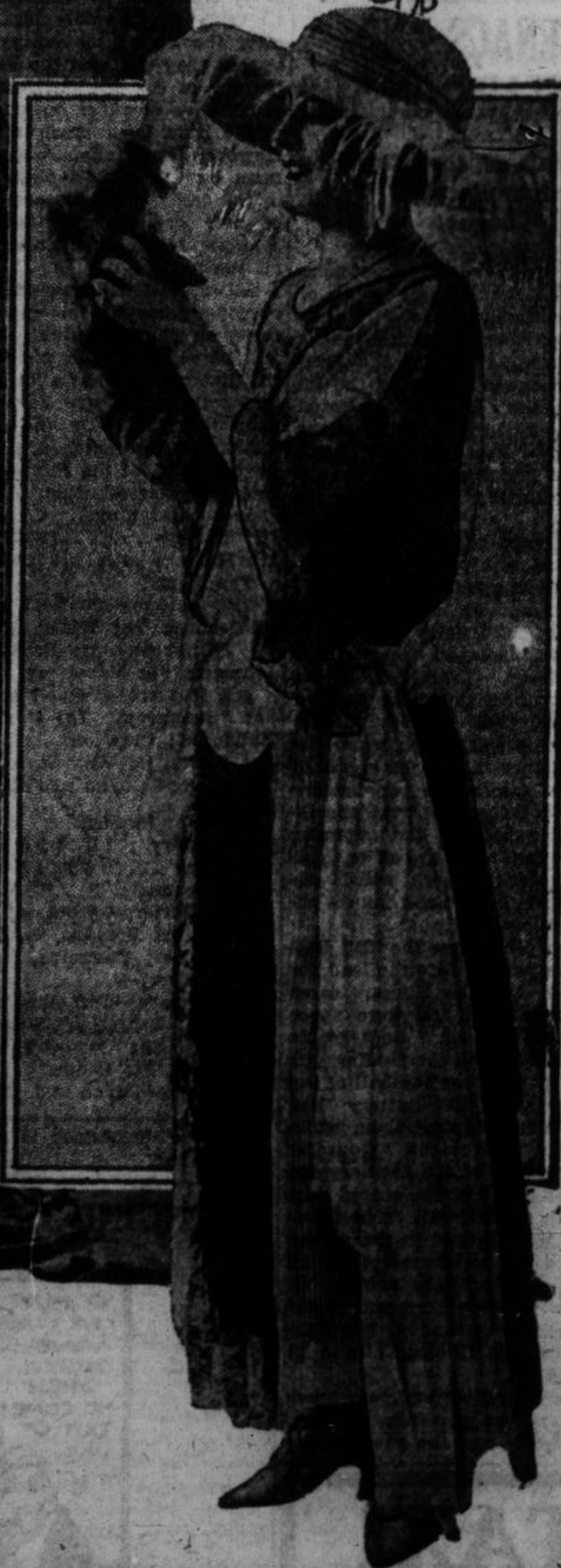


Lace Interprets the Mode



Dorrit Teller & Co.

WE have watched the growing popularity of lace in the mode from the charming touch of the berthe collar to the cloudy folds of lace which complete the gown. Its charm will not be easily relinquished by the woman who acknowledges the fascination of this shadowy fabric and the newer mode finds lace in various interpretations.



THE vogue for lace has gained such a wide popularity that fashion has decided to interpret its coming mode with this shadowy fabric. Lace has a charm all its own. It may be soft and clinging and simple in pattern, or it may take a more luxurious note and be woven of gold, silver or copper threads. Lace must be combined with another material this season if it would reach the final demands of the mode.

The large figure displays a gown of Victorian interpretation showing a snug bodice, elongating at front and back into two points. A bias fold of the chiffon velvet which fashions the bodice is shirred at the lower edge of the pointed waistline. And a spray of silk lace, in charming contrast to the foundation frock, falls in graceful folds, terminating beneath the hem of the under skirt.

Of chun, in its finest thread, another soft lace frock is designed. The slip worn beneath the lace tunic is of lustrous charmeuse, gleaming in fascinating lights through the shadowy lace that is simply folded over in two straight panels. The fullness is confined at the hips by groups of tufted roses.

When Milady goes to the southern resort, she may indulge her fancy for lace by selecting the charming costume shown in another illustration. It is designed of two distinct colors, throwing the lace inserts in exquisite contrast with the shade of georgette which fashions the frock itself. You will notice that the lace yoke at front and back of the blouse falls into the sleeves. Panels of lace alternate with panels of pleated georgette to form the skirt and a wide girde of the filmy material flows at one side into a long cash. One color or the other may be selected for the hat.

Gold lace, in an intricate leafy pattern is the luxurious note which pleasantly contradicts the simple lines of the youthful dancs frock pictured. The bodice is of two straight pieces, joined to the full lace skirt by a band of mink.

Lace interprets the evening accessories. We see it in slipper buckles, kerchiefs, bandeaux and prominently used in fans. The fan of silver lace catches the low lights of the ball room and holds them in a fascinating glimmer.

Copyright, 1912, by International Pattern Service, Inc. Great Britain Rights Reserved.

