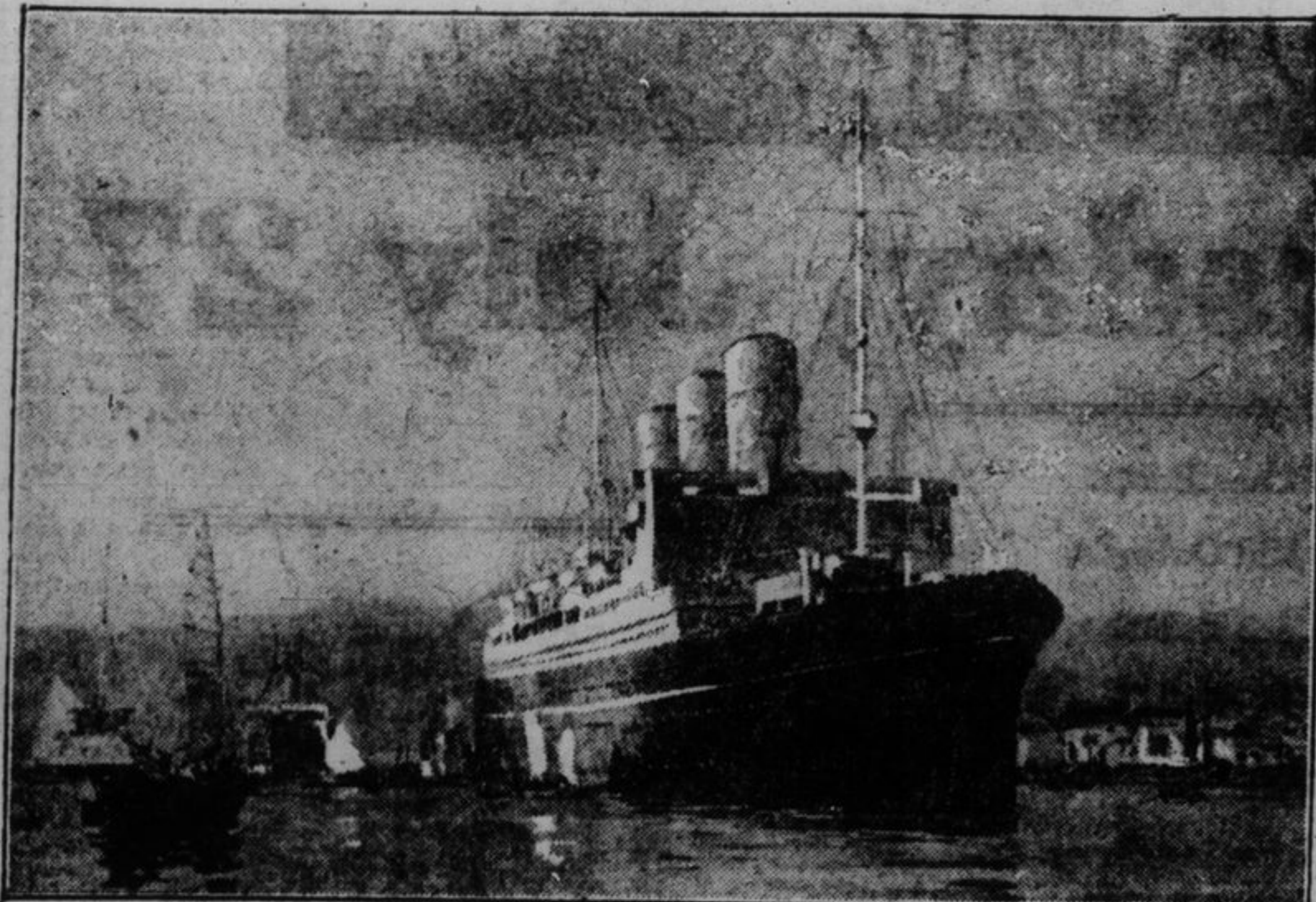


Battle for Marine Supremacy Renewed on Pacific Ocean



The "Empress of Canada," the new C.P.R. liner which opens a new era of development in Canada's trans-Pacific Trade.

The arrival at Vancouver of the "Empress of Canada," the new Canadian Pacific greyhound of the Pacific, was marked at that port as an event of the first importance. Public recognition for the great liner was given and thousands of Vancouver's citizens took the first opportunity of visiting the ship and making a thorough inspection of her splendid appointments.

The "Empress of Canada's" importance as a factor in Canada's trans-Pacific trade was outlined in a message received at Vancouver from D. C. Coleman, vice-president, C. P. R. western lines, on the day of her arrival. Mr. Coleman said:

"The struggle for supremacy in seaborne trade was first fought out in the narrow waters of the Mediterranean, and around its shores and those of neighboring seas, arose great empires, such as Smyrna, Alexandria, Constantinople, Salonica, Venice, Genoa, Naples, and Marseilles. In the sixteenth century, the scene of conflict shifted to the Atlantic, and leadership passed in turn to Spain, to Holland and to Britain. This brought added riches to London, Antwerp and Hamburg, and laid the foundation of the greatness of New York, Boston, Baltimore and Montreal. In the opinion of many, the twentieth century will see the battle renewed on the waters of the Pacific, and there we may expect an area of breathless competition. British navigators, and British traders led the way there, and if the Empire is to remain in the lead, the Dominion of Australia, New Zealand and Canada must be alive to the greatness of the issue and the immensity of the possibilities. As an evidence that Canada is ready to meet all comers in friendly rivalry, the Canadian Pacific sends to the North Pacific one of the finest products of the shipyards of the Empire. It is our hope and our expectation that she and her sister ships will be deemed worthy of the flag which they fly, and that during their lives they will contribute greatly to the upbuilding and advancement of Canada's Pacific ports—Victoria and Vancouver."

The "Empress of Canada" is 21,517 tons gross register, 627 ft. long, 77 ft. 6 in. beam, with a cruiser stern, three funnels, and two pole masts, and is the second largest vessel in the world to pass through the Suez Canal. She has accommodation for 600 first, 100 second, and 240 third-class passengers, and special, carefully equipped quarters for 925 Asiatics, while her full crew comple-

ment is 550. She is propelled by two sets of Brown-Curtis turbines, and, though her estimated sea speed was 18-19 knots, on the run round from the Clyde to Falmouth, she actually attained a maximum of 22 knots. She is the largest ship ever built at the Fairfield yards on the Clyde and cost about \$3,500,000.

Especially notable features are 2,000 feet of oak parquet flooring for dancing in the main reception-room; the dining-room, another noble apartment, seating over 300 at a time; also a verandah cafe, a gallery of 100 ft. long, and 13 ft. wide, giving access to all the principal public rooms. The total length of the first-class promenade deck is 440 ft., 100 ft. of which is enclosed so as to be available in bad weather. The ship will encounter various climates on her transpacific run, and while there are exceptional ventilating arrangements and electric fans, attractive fireplaces are features of the heating arrangements, and another feature is a swimming pool thirty feet long, eighteen feet wide, with a maximum depth of eight feet.

The "Empress of Canada" sails via Honolulu, to Yokohama, Kobe, Nagasaki, Shanghai, Manila and Hong Kong.



DOLLAR DAY SPECIALS

Thursday, July 27th

IS A GALA DAY OF BARGAINS AND PRIZES AT

"Robinson's Stores"

MAIN STORE: Cor. Princess and Barrie Streets.

To the persons making the largest purchases here on \$ DAY we will give 3 prizes.

- 1st Prize . . . 5 lbs. Tea
- 2nd Prize . . . 10 lbs. Sugar
- 3rd Prize . . . 1 lb. Coffee

WITH EACH \$3.00 ORDER WE OFFER **10 LBS. GRANULATED SUGAR** for **69c**

GUESSING CONTEST

With every purchase you are entitled to guess at the number of Beans in a jar in the window.

- 1st Prize . . . 1 bus. Potatoes
- 2nd Prize . . . 1 bag Flour
- 3rd Prize . . . 5 lbs. Sugar

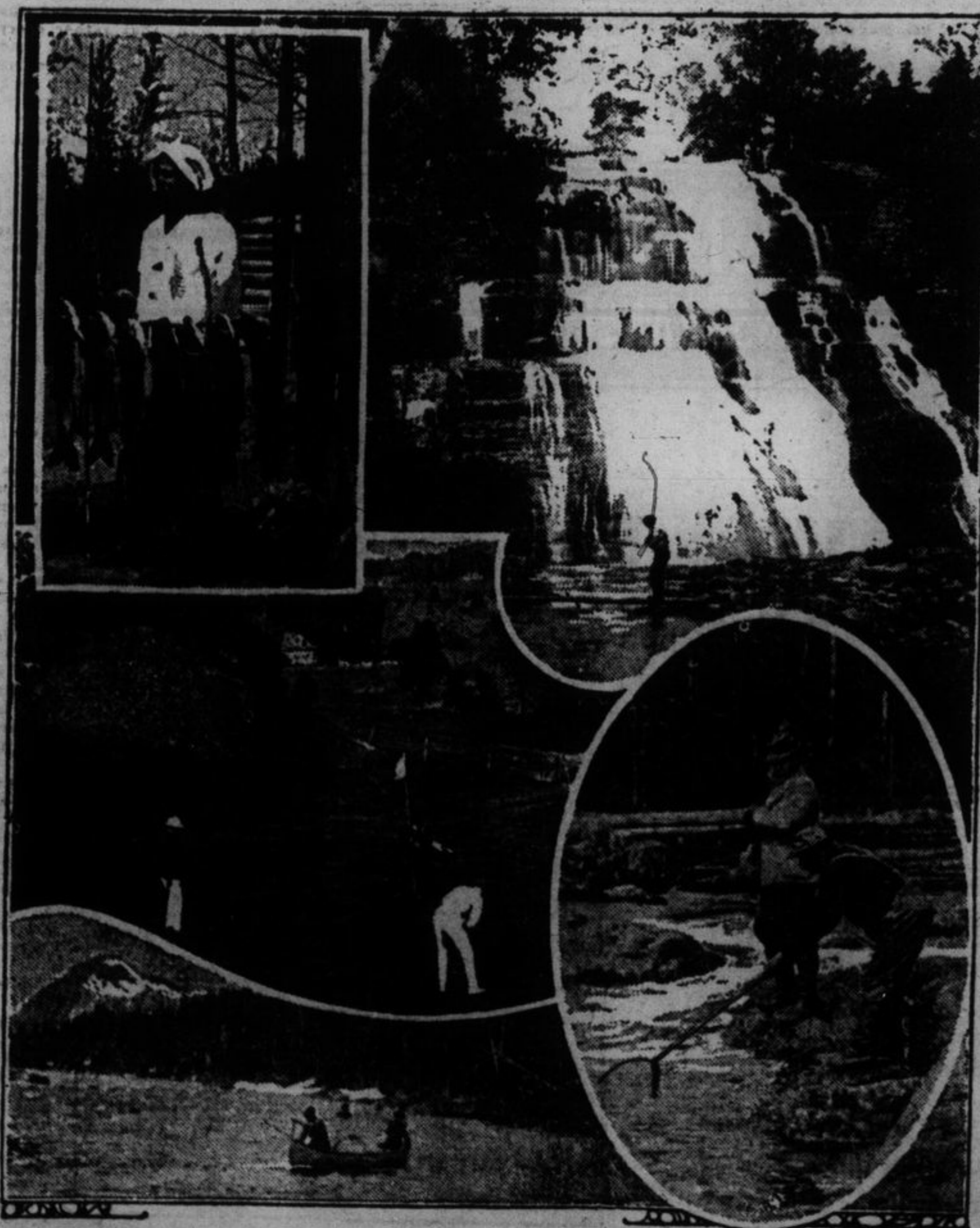
The following are merely a few of the many items we are offering at Special Prices. Take advantage of them, and remember we deliver them to you **PLEASE SHOP AS EARLY AS POSSIBLE TO AVOID THE RUSH.**

SHIRRIFF'S JELLY POWDERS . . . 12 for \$1.00	2 in 1 POLISH 2 for 25c.	CORN SYRUP, 5 lb. pails . . . 39c. pail
SODA BISCUITS 7 lbs. \$1.00	CORN FLAKES 10 for \$1.00	JAM—4 lb. pails 2 for \$1.00
AMMONIA, pkgs. 3 for 25c.	KIPP SNACKS 3 for 25c.	CORN, PEAS, TOMATOES 8 tins \$1.
MAGIC BAKING POWDER 3 for \$1	BROOMS 37c. each	STARCH 11 lbs. for \$1.00
VANILLA EXTRACT 3 for 25c.	MACARONI, large, 7 pkgs. for \$1.00	COFFEE 3 lbs. for \$1.00
SALMON—large, pink 7 for \$1.00	BISCUITS—1,000 lbs. to go at 17c. lb., or 6 lbs. for \$1.00	PALMOLIVE SOAP 18 for \$1.00
SALMON—large, fancy, pink, 10c tin	CORN STARCH 3 for 25c.	CAMPBELL'S SOUPS 7 tins \$1.00
CASTLE SOAP 7 for 25c.	MIXED FEED \$2.69 Cwt.	EAGLE MILK 25c. each, 5 for \$1.00
SARDINES 5 for 25c.	TEAS	CARNATION MILK 7 for \$1.00
CHICKEN HADDIES 6 for \$1.00	SALADA 2 lbs. for \$1.00	SOAPS—Gold, Surprise, etc. 15 bars for \$1.00
RAISINS 23c. lb., 5 lbs. \$1.00	LIPTON'S 2 lbs. for \$1.00	OLD DUTCH 11c., 10 for \$1.00
LIBBY'S RED SALMON, 4 for \$1.00	OUR OWN BLEND 2 1/4 lbs. \$1.00	MATCHES 9 boxes for \$1.00
BABBITS 14 for \$1.00	H. A. OLEO 5 lbs. for \$1.00	COCOA, large tins 4 for \$1.00
SOAPS—Polo, etc. 6 for 25c.	LEMONS 20c. Dozen	PRUNES 8 lbs. for \$1.00
MONARCH PICKLES—large, 39c. bottle	POTATOES 20c. Peck	
	PORK & BEANS (Clark's) 6 for \$1	

Robinson's Stores

"STORES OF BETTER VALUE"
Phone 1471. Corner Princess and Barrie Streets.
BRANCH STORES:
Corner Regian Road and Montreal Street.
175 Princess Street.

Summer on the Lower St. Lawrence



Canada has been blessed with many noble rivers, but queen of all the rivers of the Dominion, and the most historic, is the broad, steel-blue St. Lawrence.

Both shores of the lower St. Lawrence from the quaint old grey-walled city of Quebec to where the river enters the Gulf, are lined with delightful French villages, many of which have developed into decidedly popular and fashionable summer resorts.

Along the rugged north shore, with its purple headlands behind which rise the darker purple Laurentian hills, are to be found Murray Bay, Cap à l'Aigle, St. Irene and Baie St. Paul. Here the French customs and language together with the charm and hospitality of the habitants, have a peculiar fascination for the Anglo-Saxon.

The scenery is magnificent, the river is so wide that the opposite shore appears like a busy blue line on the horizon, there is the tang of the sea in the air, the hills are studded with lakes abounding in trout; hotel accommodation is good and whether the tourist chooses Murray Bay, the rendezvous of wealth or fashion, or one of the quieter little French villages, he is bound to have a worth-while holiday.

The south shore, while less rugged, is equally enticing with its long white sandy beaches. Rivière du Loup, Cacouna, Bic and Metis Beach are among the most popular, all offering the best of boating, bathing and fishing amid rare natural scenery. There are excellent golf courses on both the north and south shores.

Those, however, who would escape from all traces of civilization, will find sanctuary in the great forest-clad back country of the Province of Quebec, which abounds in lakes and rivers. Lake-St. Joseph, Lake Edward and Lake St. John regions and Laurentides National Park abound in fish and game.

All this territory is served by the Canadian National Railways.

OUR BARGAINS ARE BETTER THAN EVER



THE EARLY BIRD CATCHES THE WORM. BE AT OUR STORE SHARP AT 8.30 a.m.

BOOTS AND SHOES FOR ALL THE FAMILY

100 pairs high cut White Canvas Boots. All styles and sizes in the lot. **2 PAIRS FOR \$1.00**

25 PAIRS CHILDREN'S BOOTS \$1.00 A PAIR

50 pairs Ladies' Dong. Kid Tie Oxfords, each **\$1.00**

50 pairs Ladies' Black Patent Boots. A Pair **\$1.00**

FURNISHINGS
MEN'S SPORT SHIRTS With COLLARS Attached. Each **\$1.00**

STRAW HATS
We offer any Straw Hat in stock for **\$1.00**

LUSTRE COATS
Just the thing for Summer. Each **\$1.00**

SUSPENDERS
2 PAIRS for **\$1.00**

ITALIAN SILK NECKWEAR
Beautiful patterns. TWO for **\$1.00**

SUITS FOR MEN IN ALL STYLES AND SIZES

With every Man's and Boy's Suit purchased on DOLLAR DAY, we will make a present in CASH of \$1.00 for every \$10.00 spent in the purchase. COME AND SAVE MONEY ON A BRAND NEW SUIT.

Louis Abramson

336 PRINCESS STREET