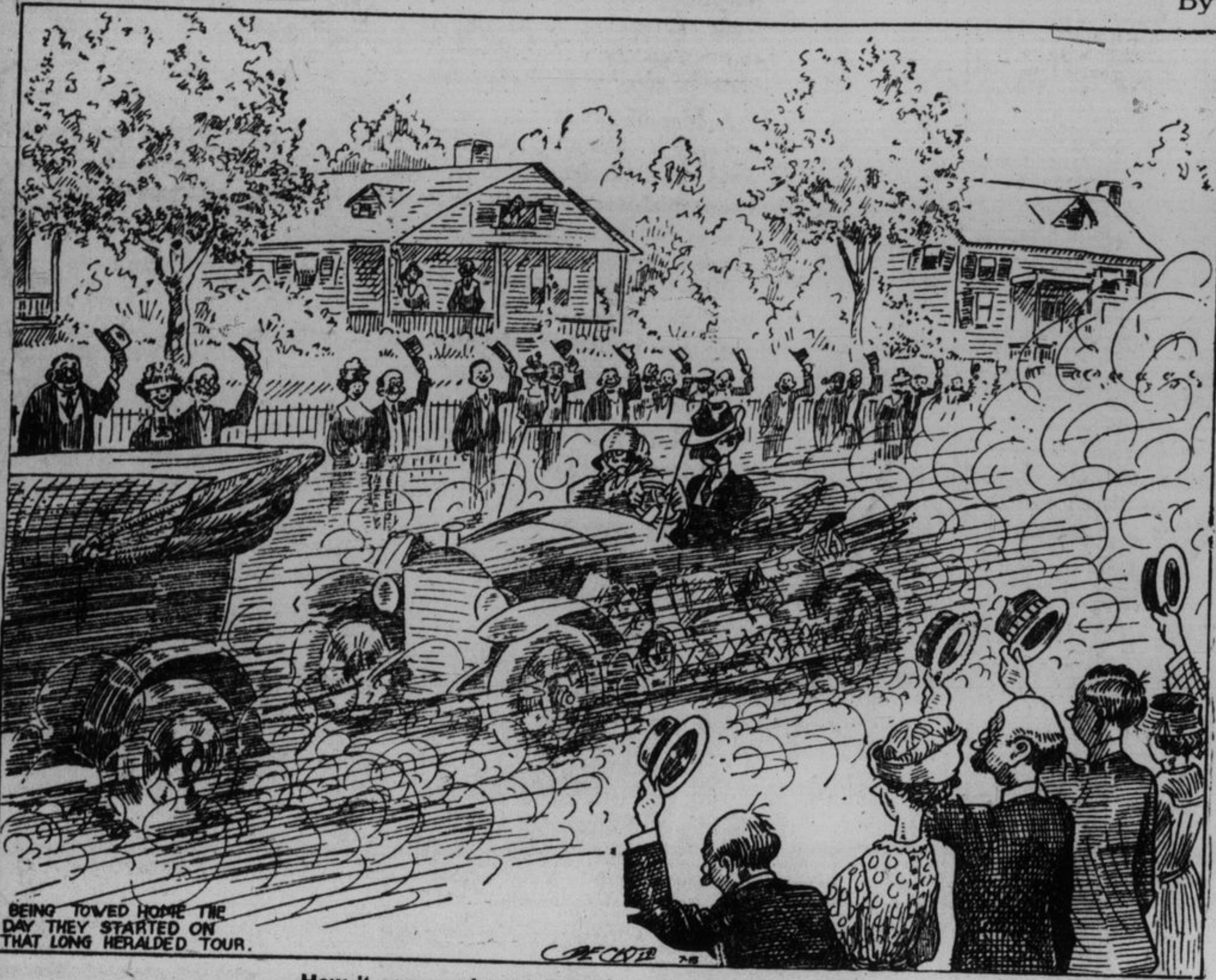


In the Automobile World

DOWN THE ROAD

By Beck



BEING TOWED HOME THE DAY THEY STARTED ON THAT LONG HERALDED TOUR.

How it seems when you don't want to meet any friends.

MOTOR NEWS

Engine Knocks.

One of the simplest plans for locating engine knocks is to employ a short rod or even a screw driver as an improvised stethoscope. One end of the stick is held between the teeth quite firmly and the other is brought into contact with the engine at various points until a point is reached where the noise sounds loudest and the ring is most clear. When this point has been located it is almost certain that the trouble will be due to looseness in some part

of the mechanism adjacent to that locality.

Covering a Bad Scratch.

A deep gouge in the body of an automobile may be filled and covered with beeswax and resin, melted together, smoothing off the surface, and repainting to complete the repair.

Bolts and Screws.

The difference between a bolt and screw is determined by the heads of each. The bolt has a hexagonal head, while that of the screw is shaved either round or flat, with a slot for a screwdriver.

Underinflation Costly.

In spite of the intention of nearly

all automobile owners to keep their tires at normal pressure, the damage to their tires from under-inflation runs into millions of dollars in this country each year.

The Demountable Rim.

There are three causes if difficulty is experienced when putting rims on wheels—the rim may be bent or the wheel warped, there may be rust on the rim of felloe band; the valve stem may not be in the center of its hole in the rim.

When Washing the Car.

A fairly stiff spray of water from the garden hose serves well to wash the wheels, running gear and mud guards, but will drive sand and dirt into the varnish of the body, ruin-

ing its lustrous finish, so that no amount of polishing and rubbing will restore it.

Simple Rules for Hand Signals.

1. To signal your intention to stop, extend the arm with the back of the hand to the rear of the car.
2. To signal your intention to turn to the left, extend the arm and point the first finger to the left.
3. To turn completely around, circle hand forward to indicate a turn to be made to the right, and backward to indicate turn to the left.
4. To signal your intention to back up, extend arm with palm to rear and motion backward.

The "S" Wrench.

When the handle of a wrench is

too long for the capacity of the jaws, there will be danger of stripping threads. For this reason, the mechanic's "S" wrench is the safest to use, as the length of the handle is scientifically proportioned to the work demanded of the tool.

Squeaky Doors.

In cars fitted with old style tops, door squeaks are sometimes caused by pulling the top straps too tightly. This causes the doors to bind, and when going over a bump or other irregularity in the road a most irritating squeak results.

Proper Tube Insertion.

To prevent a tube from getting pinched when placing it in the casing, the first rule is to graphite all rim parts, then put a little air in the tube before insertion. If a flap is used, be sure that it is exactly in place. After the tire is mounted, pound it heavily all the way round before inflating.

Spark Plugs.

If the spark plugs are dry but sooty, the lubrication of the engine is correct, but the carburetor mixture is too rich. If the plug is oily, it indicates too much oil being drawn into the combustion chamber past piston rings. If the plug is both sooty and oily, there is a combination of too much gas and oil being consumed.

Causes of Porcelain Cracks.

Spark plug porcelains crack from a variety of causes. A chance blow from a wrench while tightening, pulling too hard on the ignition wire, dropping the plug, or a defect in manufacture, are frequent causes. The usual trouble, however, is from screwing them too hard into the cylinder. As the plug heats up and expands, it cracks the porcelain.

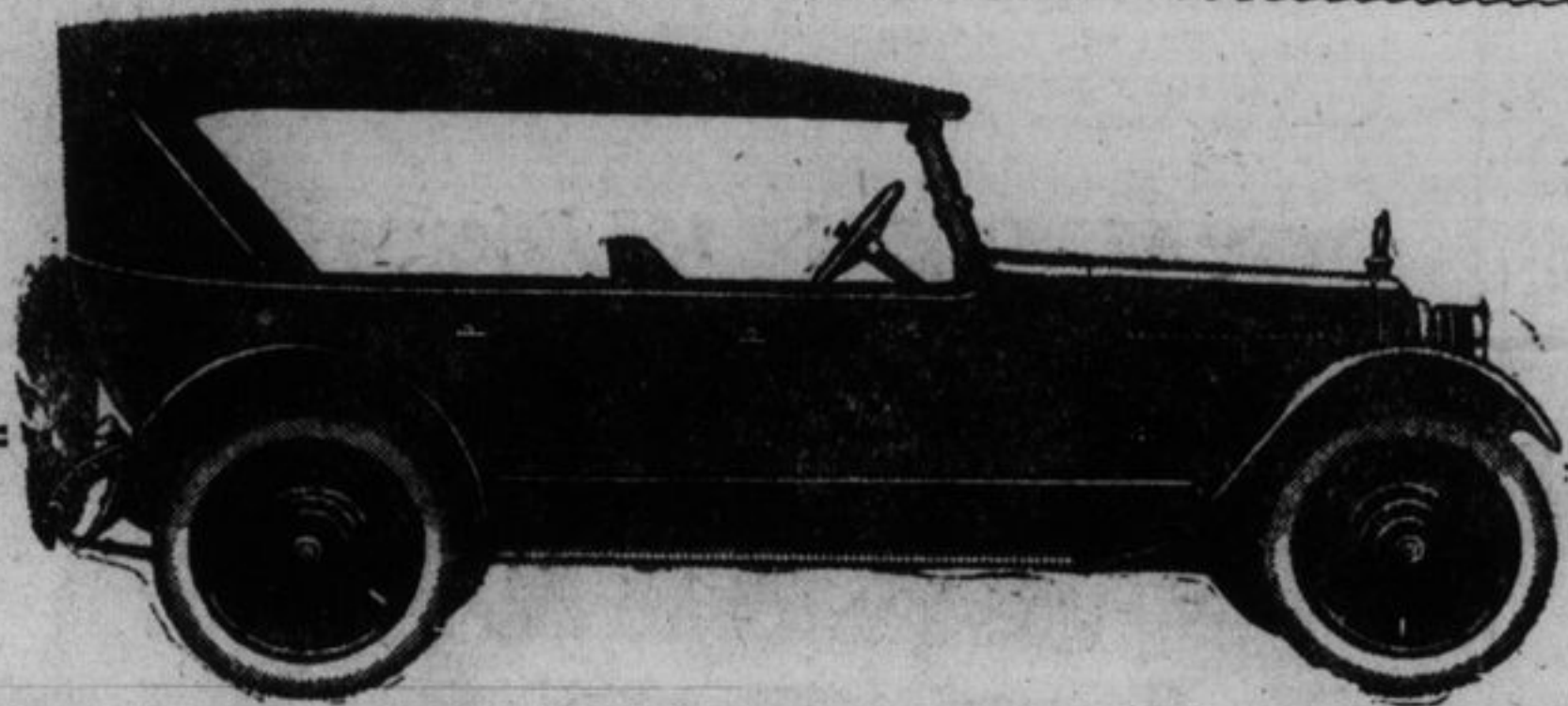
A Few Reminders.

Use the starting crank to test the compression of the cylinders. An engine operating at its greatest efficiency will produce no smoke. To buy a used car wisely and intelligently, a buyer should give the car a rigid test before closing the deal. Turning corners at high speed strains the tires, spokes and axles, and may result in skidding, followed by an overturned car. Oil which drains into the gear compartment can be filtered and used again for lubricating spring leaves and brake connections. Two of the most common causes of the engine suddenly going dead on the road are an empty gas tank and a break in the ignition circuit.

Mysterious Punctures.

Those mysterious punctures which so frequently follow after a tube has been repaired are invariably due to failure on the part of the repairer or the car owner to inspect the inside of the cover before putting it in place, for he may be sure that something is probably still in the casing and must be removed. The most generally overlooked bad actor, however, is the break in the inside of the casing. Unless a blowout patch is used to cover such a spot the tube will most certainly be pinched, particularly when the car is driven on the open road, where the driver is likely to use more speed.

Electricity for lighting a car is furnished by one of three different methods—the generator and storage battery system, which is the most common, or by the independent generator, or by the independent storage battery system.



The Columbia & Overland Sales Service

S. S. ROBINSON

S. ZACKS

Wish to announce that we have taken over the Columbia franchise for Eastern Ontario and also the Overland and Willys-Knight Agency.

Owners and prospective owners of these Cars are invited to see the new models on display at our Showrooms, 335 KING STREET.

The new Columbia Six with a 50 h.p. Continental Motor and timken equipped is wonderful value at

\$1595 all taxes paid

We are prepared to give you service on these cars, and we are stocking parts of all models of Overland.

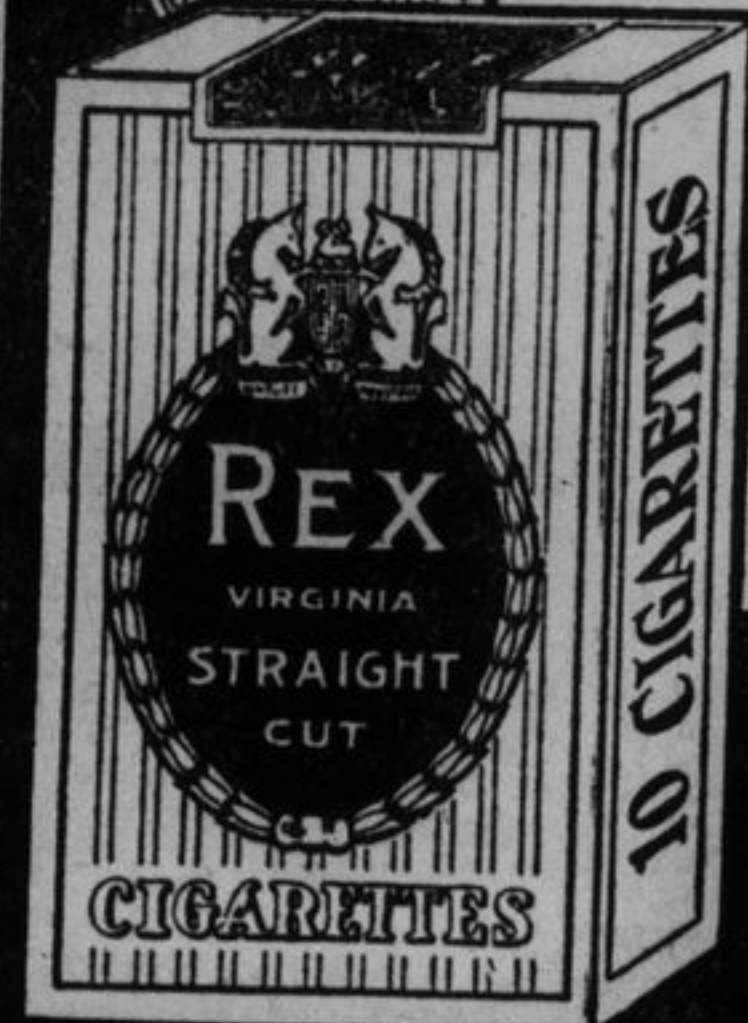
The Columbia & Overland Sales Service
335 KING STREET

COLUMBIA SIX

OVERLAND Willys-Knight

REX

King of Cigarettes



10 for 15¢

WHO WOULD CARE for your family if death should suddenly overtake you.

A POLICY IN THE DOMINION LIFE ASSURANCE COMPANY will give them SURE PROTECTION at LOW COST.

Apply NOW to:—

ARCH THOMSON, BRANCH MANAGER, Box 232, Kingston, Ont. Office: 56 Brock St. Phone 68.

GRAVES BROS.

PLUMBING, TINSMITHING, STEAM HEATING, HOT AIR AND HOT WATER HEATING

All work given our personal careful attention.

HOUSE FURNISHING HARDWARE

211 Princess Street

Phone 332

NOTICE

We have been very fortunate in securing the Eye-glass prescriptions of the Optical Department of R. J. RODGER, late of 183 Princess Street.

As these will be of great value to Mr. Rodger's former patients in repairing broken lenses, etc., we hope to be of service to them in the future.

R. ARTHEY, R.O.

VISION SPECIALIST

148 PRINCESS STREET

DAINTY CAFE

The place where dining out is truly a delight

PRINCESS ST.

OPPOSITE BIBBY'S

European Plan Dining Room
Service De Luxe

CHATEAU BELVIDERE

141 King E.

Phone 1743

M. C. FENWICK, Prop.