

SCHOOL STUDY SPORTS

THE JUNIOR BRITISH WHIG

BIGGEST LITTLE PAPER IN THE WORLD

HUMOR PLAY WORK

THE SHORT STORY, JR.

The Butterfly Princess



LL THE GIRLS in the village of Rion were fluttering with excitement. It was none other than the day of the summer carnival, when all Rion turned out for the games and pageants.

The Pirates' Cave

Ollie Clark's big brother went out camping with the gang of us boys. We were going to stay longer, only Sam Finney ate too much and got sick, and Joe Taylor's aunt came to visit them and his mother made him come home, so that sort of broke things up. Anyway, we're planning to go again soon.

Then you can gather the larger branches and driftwood to keep the fire going. "This will make a nice fire for cooking. Then after the cooking is done, and while we're washing up things, the fire for the night can be fixed.

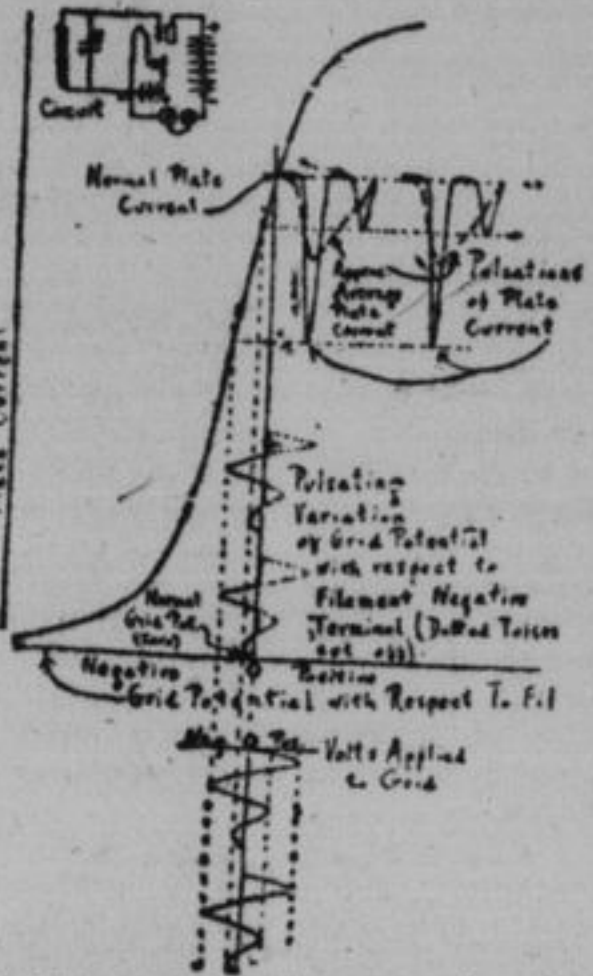
RADIO EXPLAINED

By E. H. LEWIS INSTRUCTOR NEW YORK Y.M.C.A. RADIO SCHOOL

SIMPLE DETECTION IN A VACUUM TUBE CIRCUIT.

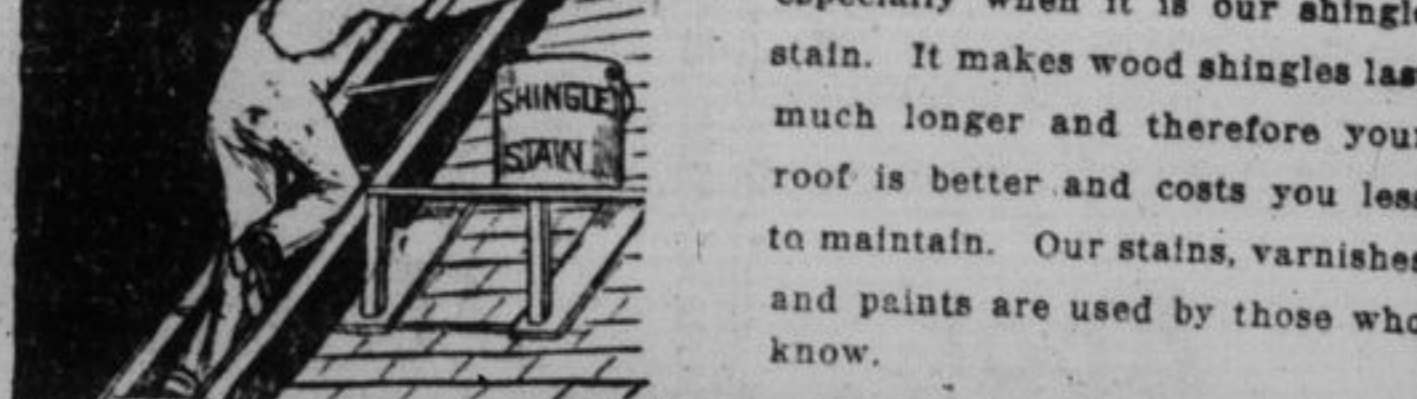
When a battery whose voltage is variable is placed in series connection with a fixed resistance (a simple series circuit) the strength of the current flowing depends directly upon the battery voltage according to Ohm's Law. That is, doubling the battery voltage doubles the current. By referring to the characteristic curve of a given vacuum tube under given conditions of plate potential and

If the grid is connected directly to the negative end of the filament through the coil there will be no current in the grid circuit. There will be a plate current of a certain value, however, since the plate is positively charged by the plate battery. If an incoming wireless signal causes an induced voltage in the grid circuit this voltage will be alternately positive and negative. The grid will then likewise be alternately charged positively and negatively. When the positive electrons will go to the grid and a grid current flows which increases in strength with the positive charge. It is important to note, however, that when the grid current flows electrons are going to the grid, and, being negative charges, are cancelling the positive potential applied to the grid. The actual potential of the grid does not, therefore, rise to as high a value as that of the potential applied. In fact, when the tube is operated in this manner the positive applied potential does not cause much increase in plate current because the actual positive grid potential does not increase much, if any. When the grid is charged negatively during the next half cycle of alternating applied voltage no electrons can reach the grid and the actual negative potential of the grid increases with the applied voltage. The plate current then decreases more than it increased in the previous case. During successive alternations of applied potentials the same thing occurs over and over, so that if the applied voltage is eventually damped out, the plate current eventually returns to its normal value because the grid potential has returned to zero. It is to be noted that when the grid is positive and a grid current flows the alternating current in the coil and condenser circuit is more rapidly damped and the tuning quality of that circuit is impaired.



filament current, however, it will be seen that plate current does not increase directly with grid potential. At some points the increase of plate current will be comparatively large for small increase in grid potential, while at others it will not be so large. Instead of being a straight line, then, this characteristic curve is bent and considerably more so at its lower and upper ends than at its middle portion. In fact, it may be comparatively straight at its middle part. The curve is a graphical representation of the variation of plate current, with grid potential changes.

GOOD PAINT PRESERVES



especially when it is our shingle stain. It makes wood shingles last much longer and therefore your roof is better and costs you less to maintain. Our stains, varnishes and paints are used by those who know.

SERVICE AT THE RIGHT PRICE OUR MOTTO

Allan Lumber Co. TEL. 1092 VICTORIA ST. KINGSTON, ONT.

Some of the attractive features of a

Briscoe Light-Weight Touring Car

- 1. A strongly built Car with seven inch frame. 2. A quiet-running motor. 3. Low Gas consumption. 4. Non glare lens. 5. Smart pleasing body lines. 6. Easy riding and comfort due to long springs. 7. A price several hundred dollars below its actual value in the automobile market.

ANGLIN BROS. Bay Street, Kingston, Ont.

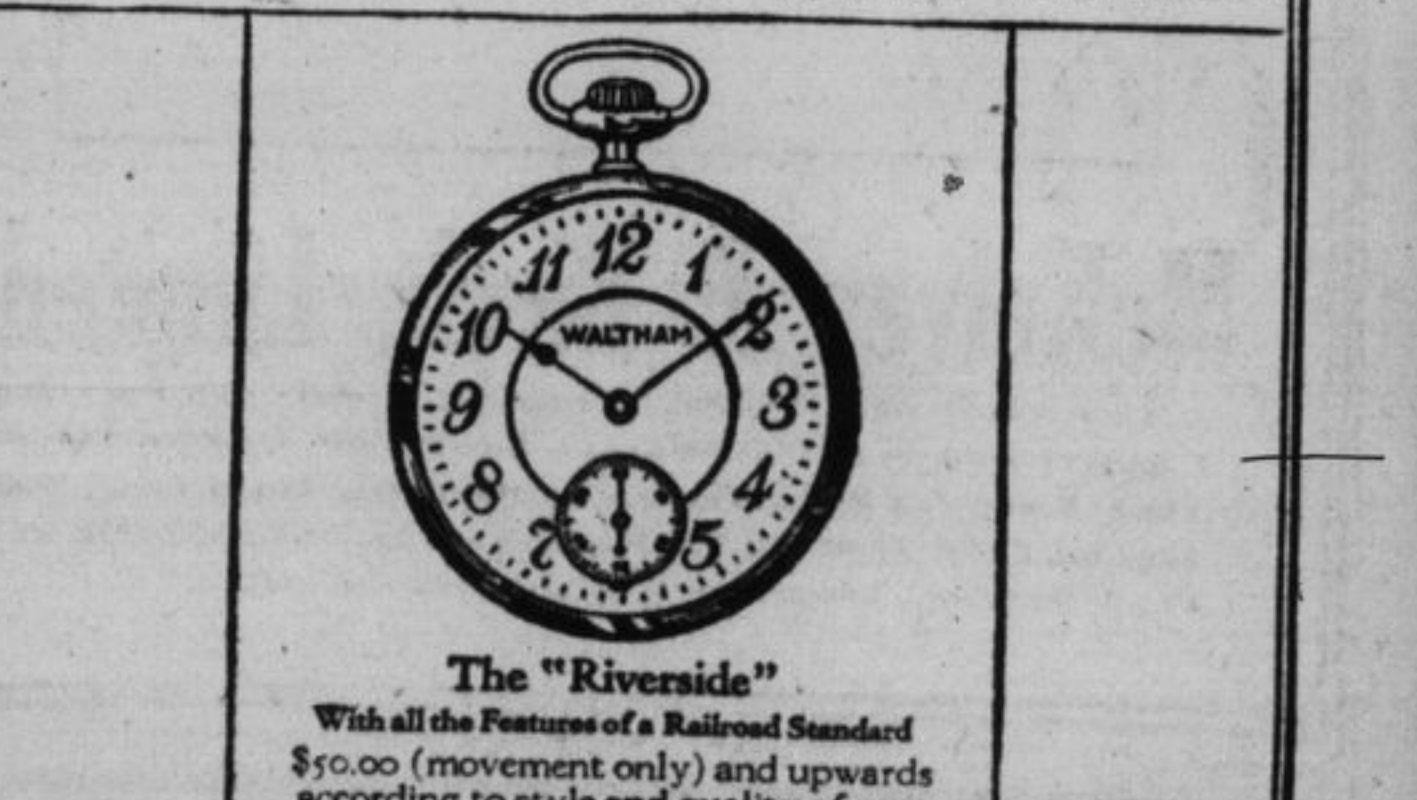
Mathieu's SYRUP OF TAR & COD LIVER EXTRACT STOPS COUGHS. Sold in generous size bottles by all dealers. THE J. L. MATHIEU CO., Proprietors, SHERBROOKE, P.Q. Makers also of Mathieu's Nervine Powders the best remedy for Headaches, Neuralgia and Feverish Colds.

SUGGESTIVE PRESENTS FOR JUNE BRIDES

Pretty Electric Table Lamps, Boudoir Lamps, Electric Irons, Toasters, Curling Tongs, Percolators, Vacuum Cleaners, Grills, Washing Machines.

H. W. NEWMAN ELECTRIC CO. Phone 441. 167 Princess Street

THE SCIENTIFICALLY BUILT WATCH



The "Riverside" With all the Features of a Railroad Standard \$50.00 (movement only) and upwards according to style and quality of case

For Business and Professional Men

A DEPENDABLE "year after year" good looking, time-keeping watch that tells you what you want to know, with accuracy and certainty. This "Riverside" Waltham is a movement that has won the highest watch-making praise for true horological value. It is a watch of the utmost reliability. It will serve you as long as life itself. Its assured low up-keep cost is a part of its exceptional worth. It is a real investment of unexcelled value. Ask your jeweler to show it to you. He knows Waltham watches. Write for a valuable booklet that is a liberal "Watch" education. Sent free upon request, The Waltham Watch Co., Limited Montreal, Canada.

WALTHAM THE WORLD'S WATCH OVER TIME A CANADIAN INDUSTRY Makers of the famous Waltham air-friction quality Speedometers and Automobile Time-pieces used on the world's leading cars. GIFTS THAT LAST

KINNEAR & D'ESTERRE Jewelers 160 Princess St.

APPARATUS AND DEVICES

By RALPH BROWN, RADIO ENGINEER

A NEW LIGHTNING PROTECTOR.

A lightning arrester is a necessity with every radio receiving set and is required by the Fire Underwriters. The one illustrated is somewhat a departure from the ordinary and functions regularly, without any attention or deterioration. It is also very substantial in construction.



The arrester itself is clamped between two copper supports of carborundum. Heavy discharges, such as lightning, cause sparks between the toothed copper edges, and the discharges are also conducted to ground through the carborundum. Lighter discharges caused by static electricity upon the antenna, are conducted through the carborundum to ground. The wheel is not solid carborundum, but is a mixture of pulverized carborundum and clay. The carborundum particles arrange themselves, so that the resistance of the wheel is very high to small signal currents, but allow comparatively heavy currents to pass from particle to particle and thence to ground.

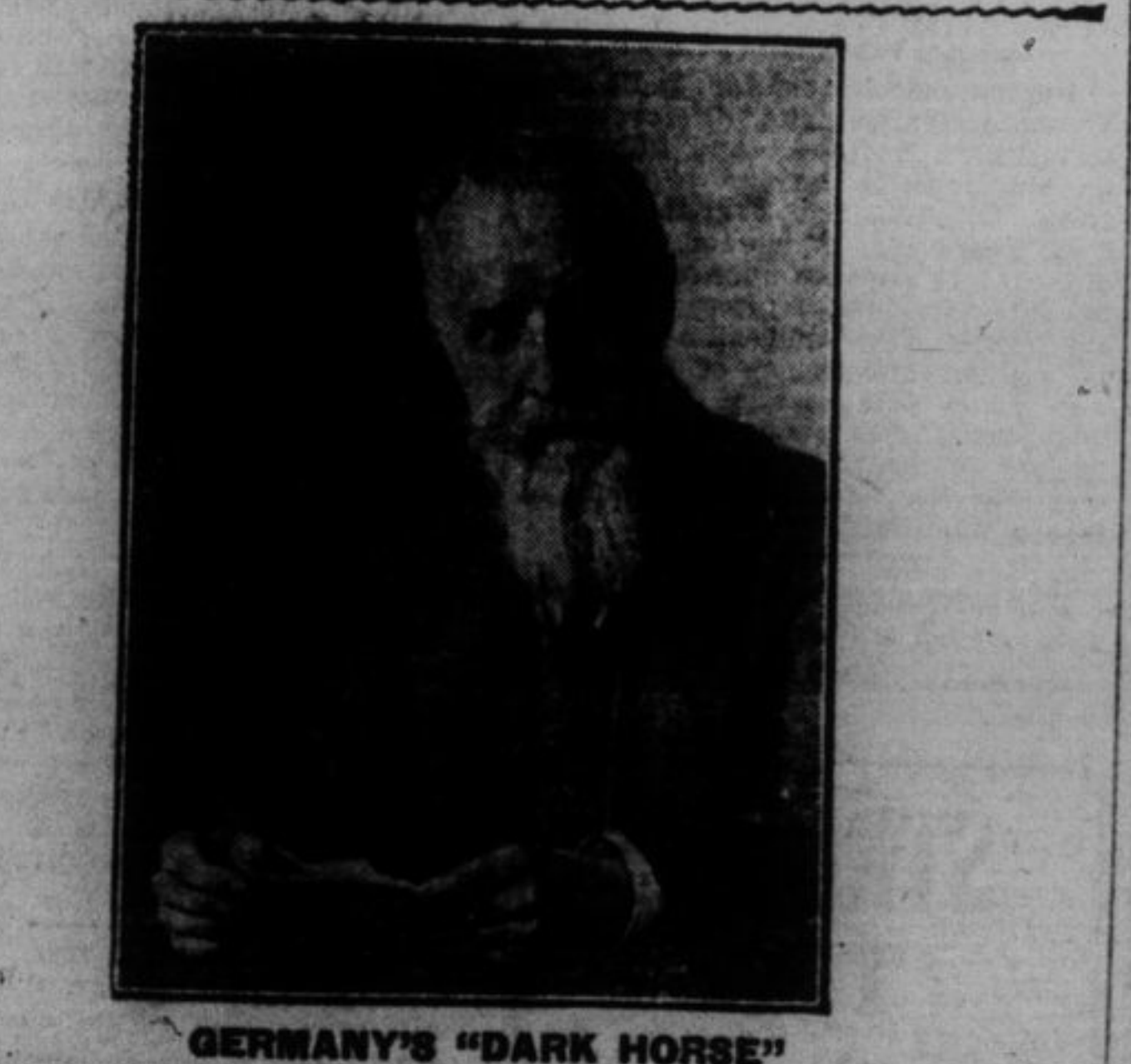
This type of arrester is very sensitive to lightning induction and does its work very well. It is found, however, that when it is used close by a transmitting station there is possibility of some conduction to ground of the signal current. In most cases this would not be disadvantageous, since the signals would be loud enough for all practical purposes. One advantage claimed in this connection is the grounding of static and a diminishing of its effect upon a receiving set. If this advantage is really practical it might well be of considerable benefit in reducing the disturbing noise due to static in the summer time.

A Useful-Sum Feature.

Will readers interested in these radio articles kindly communicate with the editor by mail?

News From Westbrook Westbrook, June 14—On Sunday last some of the people attended the special services at Odessa which were conducted by Rev. Dr. Moore, and Rev. G. I. Campbell. The services are continued all this week. The W.M.S. and Ladies' Aid societies held a meeting in the church on Tuesday. Mrs. Newton Ames is the new president for the former and Mrs. S. M. Burt for the latter. The Sunday school convention is to be held in the church here on June 23rd, the date having been changed for the Woman's Institute delegates who is to be here on the 23rd. This place has been visited by

frost and if the weather continues cool, the garden vegetables will suffer. Mrs. John Morley has purchased a horse. On Sunday two bands of gypsies passed through the village. There should be a law passed to stop these disturbers of the peace on the Sabbath. Mrs. Henry Evans attended the funeral of her brother, Frank Emmons in Kingston last Saturday. Miss Kemp is visiting friends on the island. Diamond mines in South Africa are restricting their output.



GERMANY'S "DARK HORSE" This handsome man is Dr. Adolphe Damaschke, who is the "dark horse" in the coming race for president of Germany. He is backed strongly by the Liberals, and has strong Socialist tendencies, though not a member of that party.

ANSWER TO YESTERDAY'S PUZZLE IS: RUDOLPH. This golfer has just counted his score. What is it?

PASSES AWAY AT ENTERPRISE Following illness contracted at Brother's Death Bed. Enterprise, June 13th—On Sunday, June 11th, after but five days illness, there passed away at his home near Enterprise, one who will be sadly missed, not only by his sorrowing family, but by the whole community, in the person of Percy Thompson.

Odessa, he hastened to his bedside and remained almost constantly with him until the end came. Sadness spread over the neighborhood when it was learned that he had contracted the same disease, as his brother, flu-pneumonia to which he succumbed.

family and remembrances from several neighbors. Besides his wife he leaves to mourn two children, Mary, aged fourteen, and Ralph, aged ten; also two brothers, Thomas of Centreville, and Frank of Enterprise. His remains were laid to rest in the cemetery at Centreville by the side of his mother and brother who predeceased him by a short time.

Aching Limbs. Poisons in the system cause pains, aches and stiffness. The poisons are quickly removed by the use of Dr. Chase's Kidney-Liver Pills. One pill a dose. 25c a box. Dr. Chase's Kidney-Liver Pills

The late Percy Thompson was born in the township of Camden, February twenty-fifth 1882 and was married September twenty-first 1904 to Miss Maude Vannest who survives him. He was a member of the Methodist church and took an active part in everything that pertained to the betterment of community life.

Hiccup Epidemic Prevalent Don't get the habit of hiccups—stop the slightest attack at the beginning. Nothing brings such magical relief as slowly sipping a few drops of Nerviline in sweetened water. For stomach pains, bloating, cramps, diarrhoea, nothing will prove more useful in every home than a 35 cent bottle of good, old Nerviline.

Now On Sale New "His Master's Voice" Victor Dance Hits. Stumbling — Fox Trot Paul Whiteman and His Orchestra 18899 10-inch 85c. Georgia — Fox Trot Paul Whiteman and His Orchestra 18900 10-inch 85c. Kitten on the Keys — Fox Trot Zez Confrey and His Orchestra 18900 10-inch 85c. Pick Me Up and Lay Me Down in Dear Old Dixieland — Fox Trot Club Royal Orchestra 35716 12-inch \$1.50. Popular Songs of Yesterday—Medley Waltz No. 3 International Novelty Orchestra 12-inch \$1.50. Popular Songs of Yesterday—Medley Waltz No. 4 International Novelty Orchestra 12-inch \$1.50. VOCAL Some Sunny Day - American Quartet 18903 Angel Child - Albert Campbell - Henry Burr 10-inch 85c. Ask to hear them played on the Victrola at any "His Master's Voice" dealers Manufactured by Berliner Gram-o-phone Co., Limited, Montreal