

AROUND THE EMPIRE - SERVICE FOR TRAVELLERS



BY COURTESY OF C.P.R.



BY COURTESY OF C.P.R.

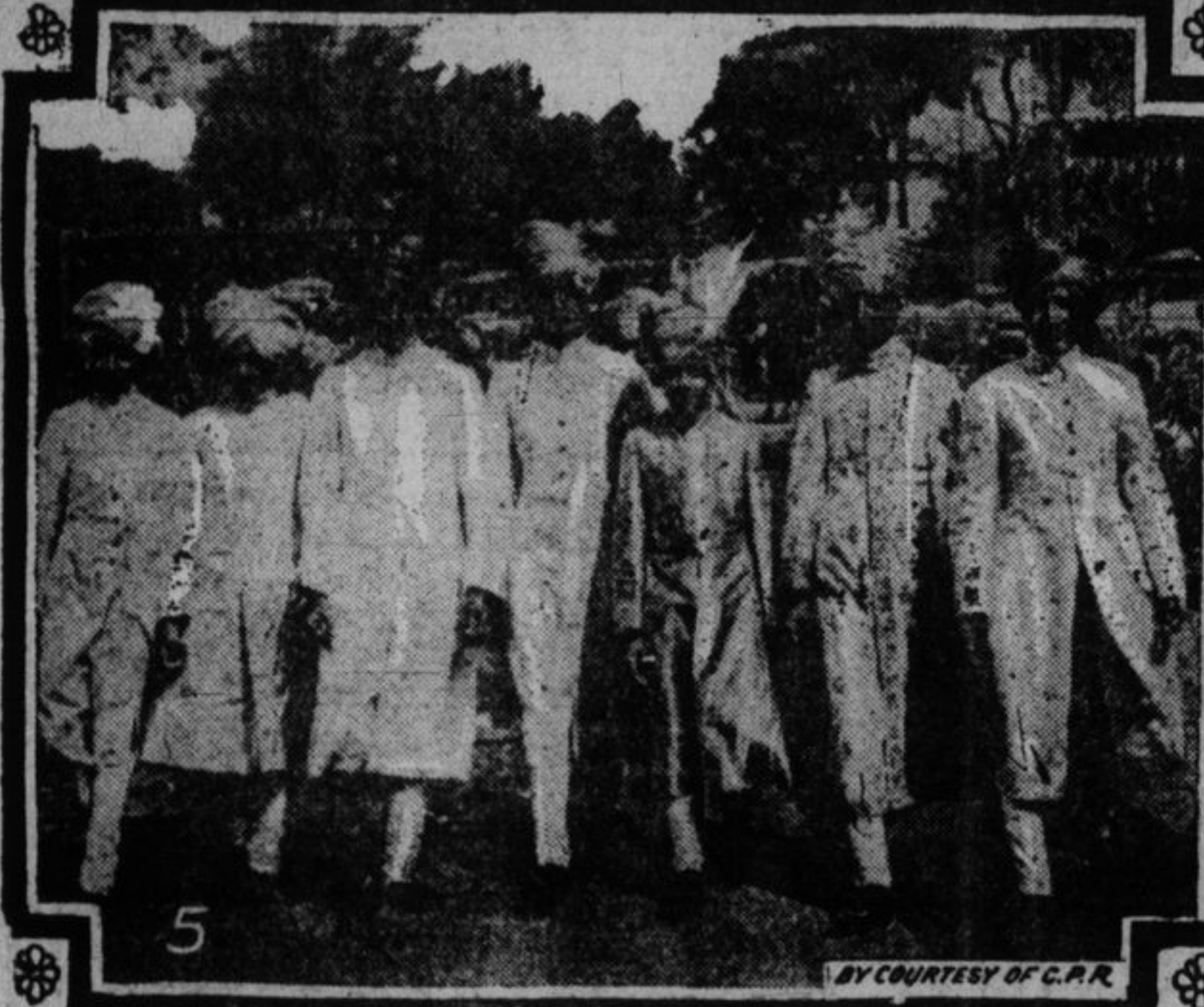


BY COURTESY OF C.P.R.

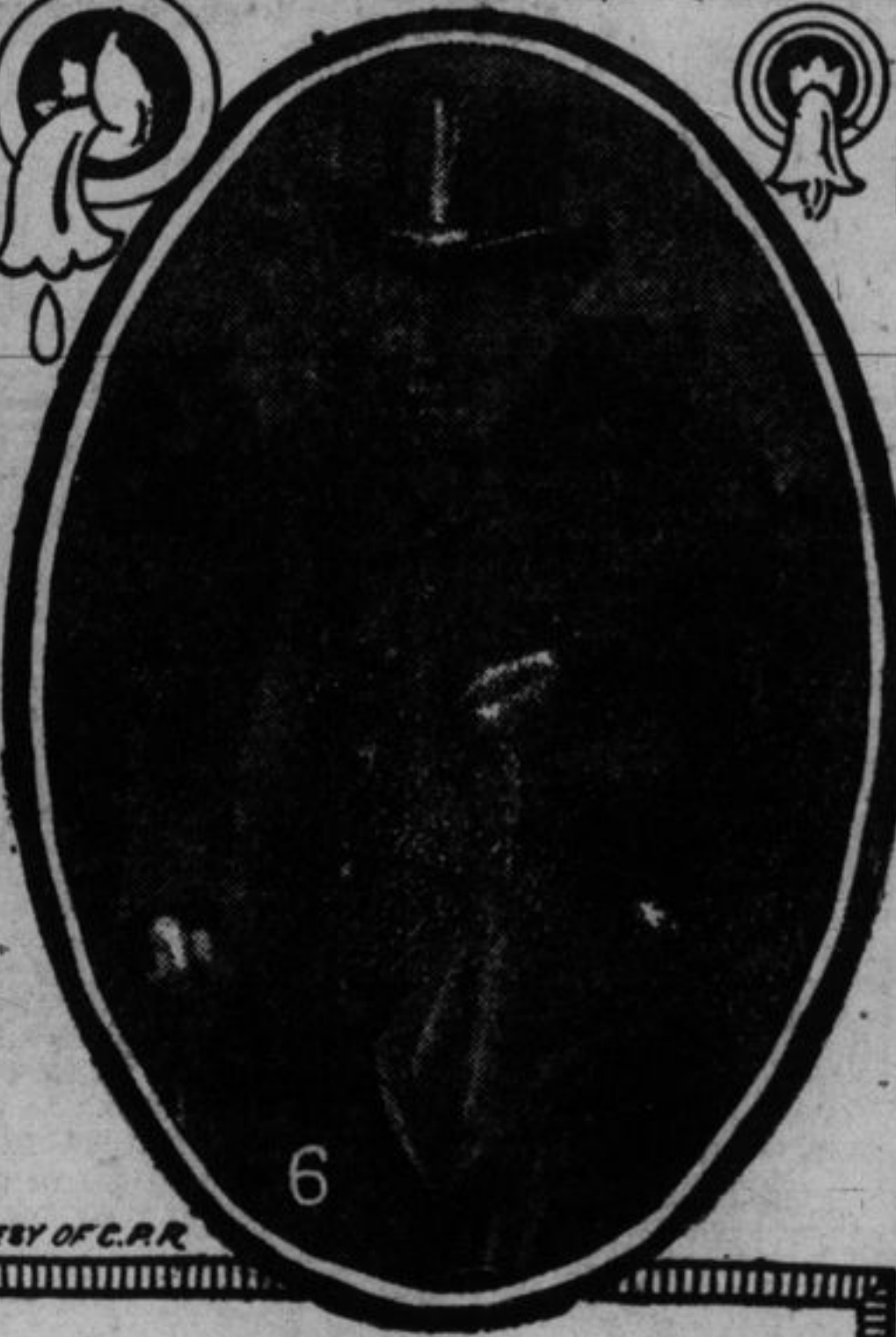
(1) King George greets the King of Norway on his arrival at King's Cross Station, London. Pictures are: From left to right, Princess Victoria, King George, the King of Norway, Queen of Norway and Prince Olaf.
 (2) A Dental Discovery—The London School of Dental Mechanics for Women has discovered an articulator. Dr. Weiss demonstrating his invention with which it is possible to exactly reproduce all the movements of the mouth to which teeth have to be fitted.
 (3) Cattle Show at Agricultural Hall, London, England. One of the King's Highland cattle.
 (4) The Prince of Wales at the inspection of the Bombay police. The Prince saw a number of native police, widows and orphans seated on the ground.
 (5) Indian staff and Ruling Princes on the way to meet the Prince of Wales on the "Renown."
 (6) An exclusive picture of the aged Primate, Cardinal Logue, leaving the Irish Peace Conference of Archbishops and Bishops at University College, Dublin.
 (7) U. S. Golfers who played winter golf at Vancouver and Victoria, and two British Columbia golfers who gave them their first beating, two up and one to play. From left to right, Jim Barnes, New York, open golf champion; Jock Hutchison, Chicago, British open golf champion; P. Taylor, Victoria Golf Club; Dave Black, Shaughnessy Heights Golf Club, Vancouver, professional golf champion of Canada.



BY COURTESY OF C.P.R.



BY COURTESY OF C.P.R.



BY COURTESY OF C.P.R.



BY COURTESY OF C.P.R.

Serving the Traveller at Windsor Station, Montreal



View of one of the counters of the new service depot for the accommodation of the travelling public, opened in one of the main entrances to Windsor Street C. P. R. Station, Montreal.

The Canadian Pacific Railway has just completed the remodelling of the main entrance to the Windsor Street Station in Montreal. Some time ago the Natural Resources Exhibit in one of the entrances was beautified and enlarged, many new products of the country being added, so that now it is one of the finest exhibits of its kind in the world. Hitherto the spacious main entrance which in years gone by was part of the ticket office, was used merely for traffic, a large space on each side being more or less waste ground.

With a view to providing increased facilities for the convenience of the travelling public the space that was formerly unused in the main entrance has been converted into a service depot. Here persons hastening to a train or returning from a trip may supply themselves with various requisites without having to walk an extra step outside the building, or take the trouble usually taken to procure these requisites. The new departure might be called a service-on-the-way depot.

Not one inch is taken from the passage way, but on each side in the formerly unused space a beautiful counter and exhibition shelf have been placed. The general furnishings of the depot are of the prettiest and most artistic design. Beauty and utility went hand in hand in the construction work. A special feature is the electric lighting. A number of artistic lamps hang from the arch above, while the counters and shelves are illuminated by a system of hidden lights whose rays, without any glaring effects, light up the station with the most pleasant lustre.

The articles sold in the service-on-the-way depot will be confined to those that are usually required by tourists and other travellers.

The greatest pains have been taken to ensure that all articles will be preserved in the best condition, a humidifier is provided for preserving the tobacco, cigars and cigarettes. The heating system is also perfect. The depot will be open all day and in the evening—all the time it might be required for the convenience of

passengers to and from the trains. The new depot will not in any way interfere with the existing overhead stand in Windsor Street Station which will continue as usual. However, it is likely that the new service-on-the-way depot will considerably relieve the congestion that there used to be around the news stand, particularly at train times.

Though always imposing, the appearance of the entrances to Windsor Street Station has been considerably improved by the remodelling that has recently taken place. In the most delightful atmosphere, those who have some moments to spare previous to train departures can amuse and interest themselves in viewing the wonderful exhibition of natural resources in one of the entrances.

In selecting the books which will be available for the travelling public, it has been decided to pay special attention to the fiction by Canadian authors, a policy which is being adopted generally all over the Canadian Pacific system.