

# Topical Picture News - - - Montreal Port



BY COURTESY OF C.P.R.



BY COURTESY OF C.P.R.



BY COURTESY OF C.P.R.

(1) Princess Mary was presented with a hunt wedding present by members of the West Norfolk Foxhounds when they met at Sandringham.

(2) White Lodge, Richmond, Eng., which it is said, Viscount Farquhar will vacate for the Prince of Wales when he returns from the East.

(3) The big tiger shot by Prince of Wales in India. View of the hunting party.

(4) Madame Clara Butt, the famous English contralto, expected on a concert tour through Canada.

(5) Kennerley Rumford, an English baritone favorite. Husband of Clara Butt.

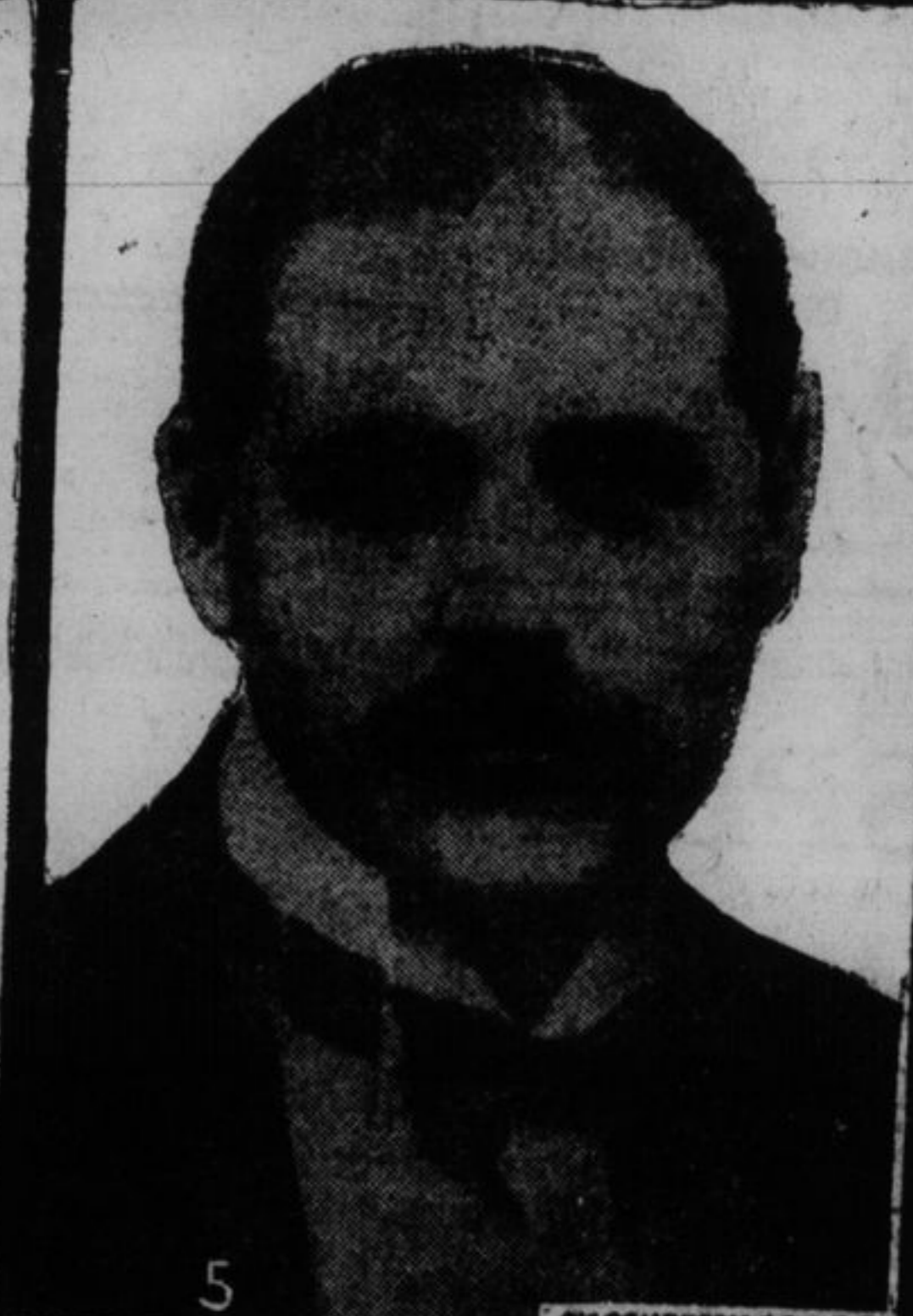
(6) Visitors at Quebec slide. They are off.

(7) Walter Scanlan, the young Irish actor and singer, in the new comedy "Irish Eyes," touring Canada over the C. P. R.

(8) Canadian Pacific expansion-picture of Canadian Dock in Liverpool, showing "Empress of France," "Empress of India," "Empress of Britain," "Metagama," in dock together.



BY COURTESY OF C.P.R.



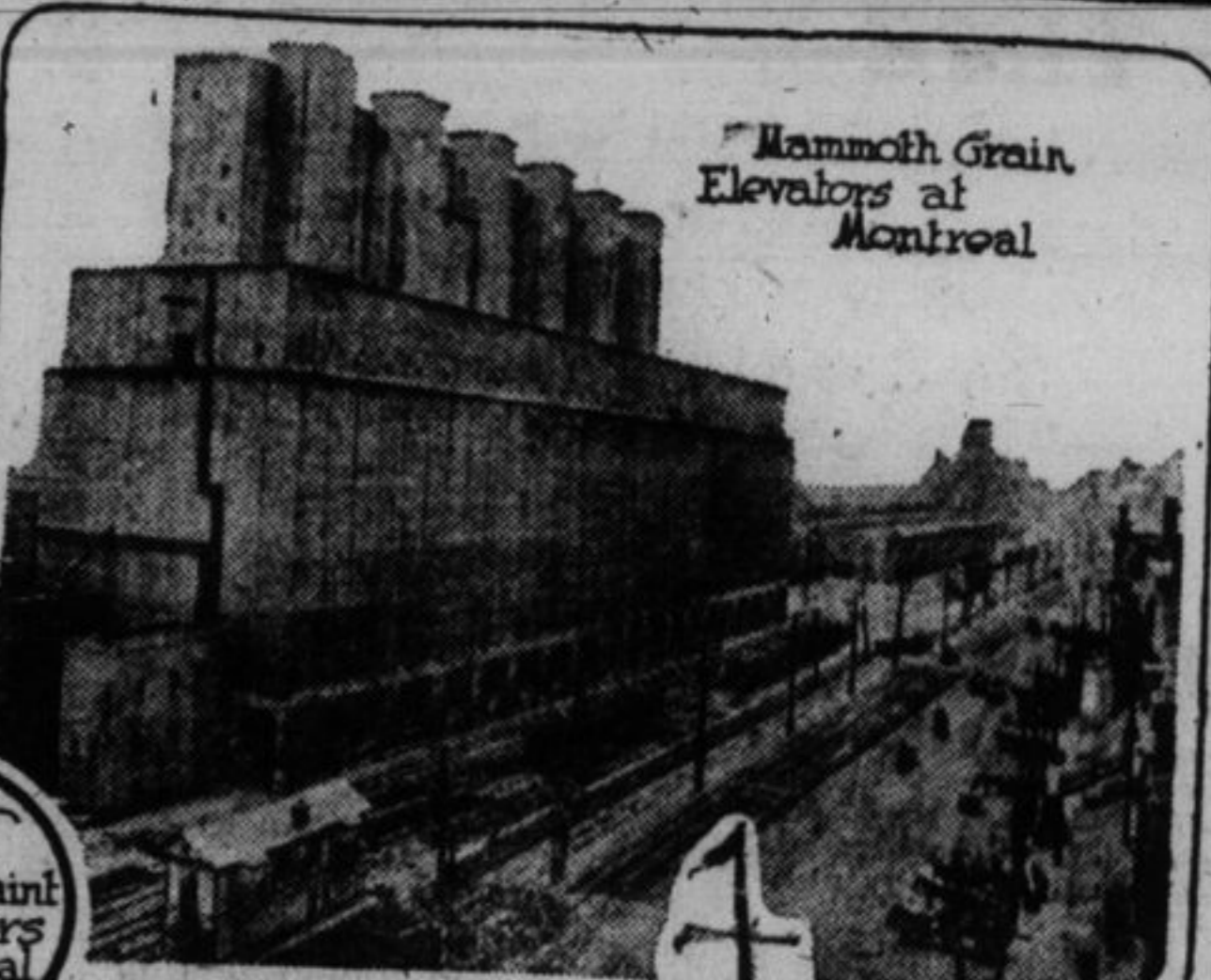
BY COURTESY OF C.P.R.



BY COURTESY OF C.P.R.



One of Many Quaint Old Corners in Montreal

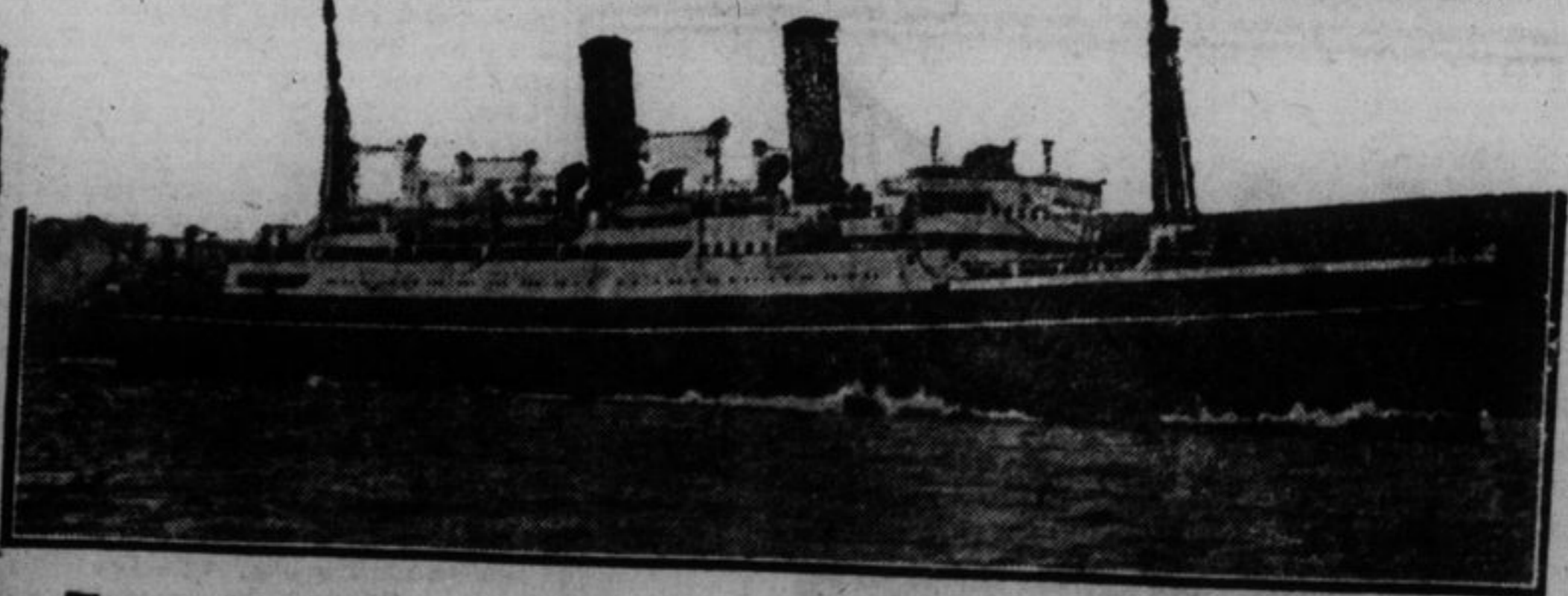


Mammoth Grain Elevators at Montreal



8

BY COURTESY OF C.P.R.



The new Canadian Pacific liner "Montcalm" 16,200 tons, will run between Montreal and Europe next season.

That the second largest port in America is five hundred miles from an ocean, may appear an impossibility to many. However, it is a fact. Montreal, the metropolis of Canada and the fifth city of North America is this port on the St. Lawrence River, 250 miles nearer to Liverpool than is New York. The vast tonnage of grains grown on the western plains of Canada and the United States, a large proportion of which is shipped to Europe, has been the main factor in the development of the Port of Montreal which is to-day the principal American port for the export of grain. This grain is brought by train and lake boats to two mammoth elevators in Montreal and from them loaded into ocean freighters. Nine boats can be loaded simultaneously from these store-houses. In order to handle the millions of bushels of grain expeditiously, this harbor is equipped with sixty miles of railway and twelve miles of wharfage. Harbor improvements have absorbed over thirty millions of dollars and additional improvements have been planned which will call for more millions. To-day the harbor can accommodate one hundred steamships from 350 to 750 feet in length, providing depths of twenty-five to thirty-five feet of water. During 1921 twelve steamship lines used Montreal as a terminal and approximately one thousand vessels arrived at and sailed from this harbor. Montreal has attained her prominence as a great port with the handicap of a seven months navigation season and during this past season exported 119,602,189 bushels of grain. This was more than twice last year's volume and over forty-four millions more than the previous record year of 1914. Export of Canadian cattle is growing to such proportions that more bottoms are needed. About twenty additional trans-Atlantic passenger steamers are scheduled to use Montreal as their western-port and additional cargo steamers are also expected to run between the Canadian metropolis and European ports. This delightful French-Canadian city, whose site was selected by Champlain, and which has been popular with tourists because of its historical features, is fast becoming a great commercial centre.