

Markets Reports

LIVE STOCK MARKETS.

Montreal, Feb. 24.—Cattle: Butcher steers, good \$7.50 to \$8.75; medium, \$6.50 to \$7.50; common, \$5 to \$6.25; butcher heifers, choice, \$6.75 to \$7.40; medium, \$5.50 to \$6.25; common, \$4.50 to \$5.50; butcher cows, choice, \$5.50 to \$6; medium, \$4.50 to \$5.50; canners, \$2; cutters, \$3.25 to \$3.50; butcher bulls, good, \$5.25 to \$5.50; common, \$4 to \$5. Good veal, \$12 to \$12.50; medium, \$9.50 to \$11; grass, \$4. Sheep sold at \$6; lambs, \$9.50 to \$10. Hogs: Off car weights, select \$14 to \$14.25.

Toronto.

Toronto, Feb. 24.—Heavy steers, choice, \$7.25 to \$8; butcher steers, choice, \$7 to \$7.50; do good, \$6.75 to \$7.25; do medium \$6.25 to \$6.50; do common, \$4.50 to \$5; butcher heifers, choice, \$6.50 to \$7.50; do medium, \$5 to \$6.25; do common, \$4 to \$5; baby heaves, \$7 to \$9; butcher bulls, good, \$4 to \$5; do medium, \$2.50 to \$3; butcher cows, \$3.50 to \$5.50; canners and cutters, \$2 to \$3; feeding steers, good, \$5.50 to \$6; do fair, \$12 to \$14; calves, choice, \$12 to \$14; do medium, \$9 to \$11; do common, \$6 to \$8; milch cows, \$50 to \$100; springers, choice, \$50 to \$60; sheep, choice, \$5.50 to \$7.50; do heavy, \$3 to \$3.50; lambs, \$10 to \$14; culled lambs, \$6 to \$7; hogs, f.o.b., \$13.25; do fed and watered, \$14; do to the farmers, \$13; corn-fed hogs, 75c to \$1 lgs.

Buffalo.

East Buffalo, N. Y., Feb. 24.—

Cattle: shipping steers, \$7.50 to \$8.25; butchers, \$7 to \$8.25; yearlings, \$8 to \$9; heifers, \$5 to \$7.50; cows, \$2 to \$5.50; bulls, \$3.50 to \$5; stockers and feeders, \$5 to \$6; fresh cows and springers, \$35 to \$110. Calves, \$3 to \$15. Hogs: heavy, \$10.50 to \$10.75; mixed, \$10.85 to \$10.90; yorkers, light do and pigs, \$11; roughs, \$8.50 to \$8.75; stags, \$4 to \$5.50; Sheep and lambs—Lambs, \$8 to \$16; yearlings, \$10 to \$14.50; wethers, \$9.50 to \$10; ewes, \$2 to \$8.50; mixed sheep, \$8.50 to \$9.

Chicago.

Chicago, Feb. 24.—Cattle—Top heavy steers, \$9; top yearlings, \$8.75; bulk beef steers, \$7 to \$8.05; canners and cutters, \$4 to \$5; strong to 15c higher; veal calves about steady; stockers and feeders firm, bulk, \$6.25 to \$7; bulk fat cows and heifers, \$4.25 to \$5.75; bulk butcher bulls, \$4.35 to \$4.75. Hogs—Top, \$10.65 on sorted 180-pound averages; bulk, \$10 to \$10.50; pigs, 25c higher; bulk desirable 100 to 120-pound pigs, \$9.50 to \$10; some strong weights up to \$10.25. Sheep—Fat lamb top, \$16.10; bulk, \$15 to \$18; good yearlings, \$13.75; woolled fat ewe top, \$8.25; shorn, \$7; shearing lambs, \$13.25 to \$14.

GRAIN QUOTATIONS.

Toronto.

Toronto, Feb. 24.—Manitoba wheat—No. 1 northern, \$1.62 1-2; No. 2 northern, not quoted; No. 3

northern, not quoted; No. 4 wheat, not quoted. Manitoba oats—No. 2 C.W., 61 1-2c; No. 3 C.W., 58 1-2c; extra No. 1, 58 1-2c. Manitoba barley—No. 3 C.W., nominal; No. 4 C.W., nominal. All above on track bay ports. American corn—No. 2 yellow 77c; No. 3, 75 1-2c; No. 4, 74 1-2c; on track, Toronto.

Ontario oats—No. 2 nominal, according to freight outside. Ontario wheat—Car lots, No. 1 commercial, \$1.35 delivered, as asked. Quotations purely nominal, as there is not enough wheat offerings to make a market. Buckwheat—No. 1, nominal, 78c to 80c. Rye—No. 2, 86c to 88c. Ontario barley—No. 2, test 47 lbs., 57c to 60c. Manitoba flour—First patent, \$7.40; second patent, \$6.90. Ontario flour—90 per cent. patent lots, delivered, \$5.10, bulk, seaboard. Millfeed—Bran, \$28 to \$32 per ton; shorts, \$30 to \$32 per ton; good feed flour, per bag, \$1.70 to \$1.80. Hay—Extra No. 2, \$21.50 to \$22; mixed, \$18; straw, car lots, \$12; loose hay, per ton, No. 1, \$25.

Montreal.

Montreal, Feb. 24.—Oats, Canadian Western, No. 2, 66 1-2c to 67c; do, No. 3, 64 to 64 1-2c. Flour, Man. Spring wheat patents, strats, \$8. Rolled oats, bag 90 lbs., \$3 to \$3.10. Bran, \$32.50. Shorts, \$33. Hay, No. 2, per ton, car lots, \$28 to \$29.

Winnipeg.

Winnipeg, Feb. 24.—Wheat—No. 1, hard, \$1.39 3-4; No. 1 Northern, \$1.39 1-2; No. 2 Northern, \$1.34 3-8; No. 3 Northern, \$1.27 7-8; No. 4, \$1.21 3-8; No. 5, \$1.12 7-8. Oats—No. 2 C.W., 50 1-2c; No. 3 C.W., 46 3-4c; extra No. 1 feed, 46 3-4c; feed, 46c; No. 2 feed, 42 3-4c; rejected, 41c; track, 49c. Barley—No. 3 C.W., 63 1-2c; No. 4 C.W., 60 1-4c; rejected and feed, 53c; track, 63 1-2c. Flax—No. 1 N.W.C., \$2.37 1-2; No. 2 C.W., \$2.32 1-2; No. 3 C.W., \$2.09; rejected, \$2.09; track, \$2.37 1-2. Rye—No. 2 C.W., \$1.02 1-8.

Chicago.

Chicago, Feb. 24.—Wheat, No. 6 red, \$1.33. Corn, No. 2 mixed, 56 1-2c; No. 2 yellow, 56 3-4 to 57 1-2c. Oats—No. 2 white, 39 1-2 to 44c; No. 3 white, 34 3-4 to 36 1-2c. Rye—No. 2, 99 1-2c. Timothy seed, \$5 to \$7.50. Cloverseed, \$12 to \$22. Pork nominal. Lard, \$11.42. Ribs, \$10 to \$12.

Minneapolis Grain.

Minneapolis, Feb. 24.—Flour, \$8.20 to \$8.50 a barrel. Cash wheat—No. 1 Northern, \$1.52 to \$1.57; May, \$1.43; July, \$1.33 1-4. Corn—No. 2 yellow, 51 to 51 1-2c. Oats—No. 3 white, 35 1-2 to 36c. Flax—No. 1, \$2.47 3-4 to \$2.54 3-4.

New York.

New York, Feb. 24.—Flour: spring patents, \$7.90 to \$8.50; spring clears, \$5.75 to \$6.25; soft winter straights, \$6.25 to \$6.75; hard winter straights, \$7.25 to \$7.50. Flour—Rye, fair to good, \$6.00 to \$6.35; choice to fancy, \$6.40 to \$6.75. Buckwheat Flour—\$3.10 to \$2.25 per 100 lbs. Cornmeal—fine white and yellow granulated, \$1.60 to \$1.65. Rye—No. 2 western, \$1.14 f.o.b. New York and \$1.12 1-2 c.i.f. export. Barley—feeding, 71 1-2 to 75 1-2c and malting, 71 to 75c c.i.f. New York. Wheat—No. 2 red and No. 2 hard \$1.44 1-2; No. 1 Manitoba, \$1.52 1-2 and No. 2 mixed durum, \$1.36 1-2 c.i.f. New York to arrive. Corn—No. 2 yellow and No. 2 white, 74c and No. 2 mixed, 73 1-2c c.i.f. New York all rail. Oats—Spot market firm. No. 2 white, 49 to 49 1-2c.

GENERAL TRADE.

Toronto, Feb. 24.—Butter, dairy, 45 to 50c; do, creamery, 48 to 53c; eggs, fresh, doz., 60 to 65c; cheese, lb., new, 25 to 30c; chickens, spring, lb., 35 to 40c; fowl, lb., 28 to 30c; ducklings, lb., 30 to 33c; turkeys, lb., 50 to 53c; geese, lb., 32 to 35c.

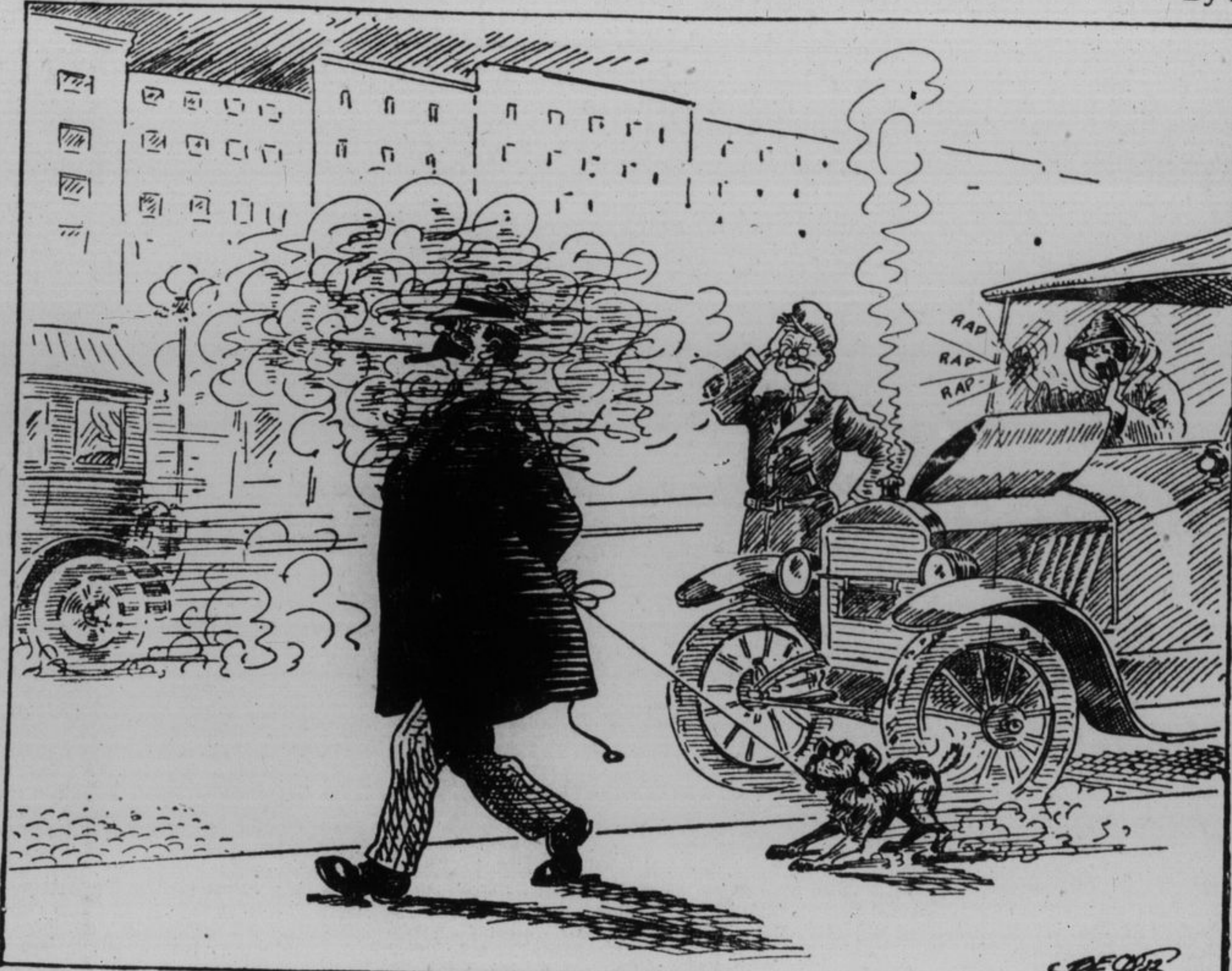
Montreal.

Montreal, Feb. 24.—Butter—Creamery solids, 35c per lb.; prints, 36c per lb.; cooking butter, 29c; oligomargarine, 22c per lb. Eggs—New laid, 47c; specials, 52c. Ham—Large size, 28c; small size, 30c; cooked, 43c lb. Bacon—Windsor boneless, 38c per lb.; breakfast, 28c to 34c per lb. Dressed Poultry—Milkfed chickens, 39c to 42c lb.; selected chickens, 34c to 37c; fowls, 24c to 33c; geese, 28c to 30c; turkeys, 48c to 53c; ducks, 33c to 35c; green ducks, 42c per lb. Dressed Hogs—Fresh killed, abattoir stock, \$19.50. Potatoes—Quebec, white stock, \$1.10 to \$1.15 per bag of 90 lbs., extra track; Reds, \$1 in bulk.

THE KINGSTON MARKET

Kingston, Feb. 24. Poultry. Chickens, lb. . . . . . 25 Hens, dressed, lb. . . . . . 30 Dairy Products. Creamery Butter, lb. . . . . . 35 to 45 Dairy butter . . . . . 32 Farmer's rolls . . . . . 33 Eggs, fresh, dozen . . . . . 50 Oleomargarine . . . . . 25

DOWN THE ROAD



Two days after you sold them the old car.

By Beck

Banking by Mail. MANY and varied are the types of men who conduct their banking with The Standard through the post. Busy men who live far away from any bank find that our plan of banking by mail saves them making special trips to town, and is satisfactory in every way and quite simple. We pay interest at current rates on such accounts.

THE CANADIAN BANK OF COMMERCE. Capital Paid up \$15,000,000. Reserve Fund \$15,000,000. Kingston Branch, Princess & Clergy Sts. Branch. R. T. Brymner, Manager.

Successful Farming is the Backbone of Business. Farming is a business requiring study, foresight, common-sense and close application. The Farmer requires a banking connection the same as other business men. For this reason we invite the Farmer to open an account with this bank. You can submit your statement of assets and liabilities and receive the same consideration in the handling of your account as we extend to other business.

Table with columns for Cheese, Vegetables, Fruit, and other food items with prices.

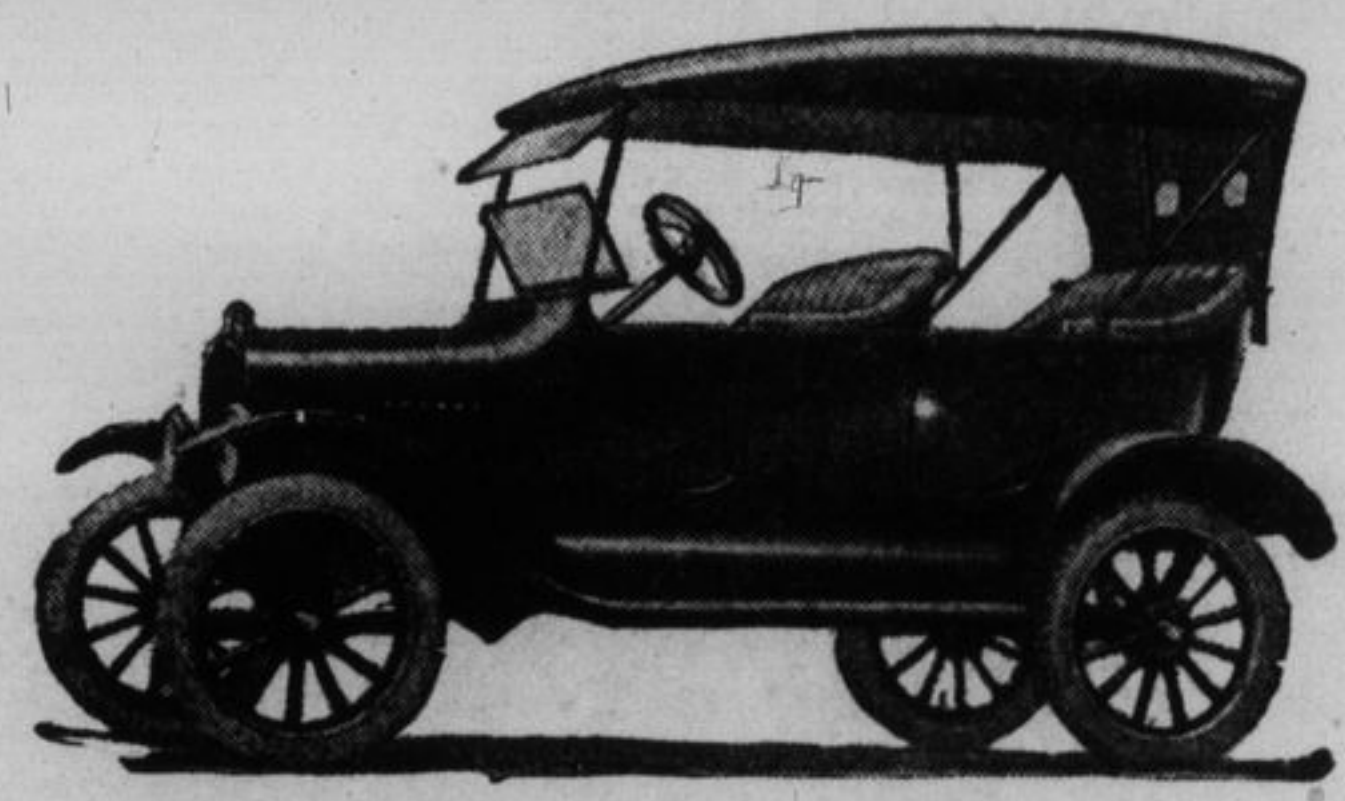
Table with columns for Fish, Meats, and other food items with prices.

You May Have Kidney Trouble And Not Know It. If your back aches and you suffer from dragging pains, it is an evidence your kidneys may not be acting just right. What you need is a course with Dr. Hamilton's Pills.

TAMWORTH HOME BURNED. The House of H. E. Thornton destroyed on Wednesday. Tamworth, Feb. 23.—H. E. Thornton lost his home by fire Wednesday morning. The fire had such a start in the partition upstairs that in spite of the people's efforts the house could not be saved. Most of the contents were saved. The Thornton family have moved over Floyd's store. The teachers and pupils of the continuation school held an enjoyable concert and reception in the assembly hall of the new wing of the school. After an excellent programme of speeches, dialogues and music, a geographical and musical contest was held. The evening closed with dainty refreshments served by the young ladies of the school.

Manslaughter in 2nd Degree. Using a razor—bad stuff—but many people do it for their corns. The only remedy that is painless and sure is Putnam's Corn Extractor, which does remove warts and corns, cleans them right off. Refuse a substitute for "Putnam's." 25c. everywhere.

Not enough Fords to go 'round. IF YOU want a Ford in March or April you are likely to be disappointed unless you make reservation NOW. We can obtain just so many cars for Spring delivery, and a recent survey of our territory shows that the number allotted to us is likely to fall considerably short of our requirements. Order NOW and we will store your car until you are ready to take delivery.



VanLuven Bros. PHONE 1609 - - - 34-38 PRINCESS ST.