

# Now She Turns to Flannels and Leather

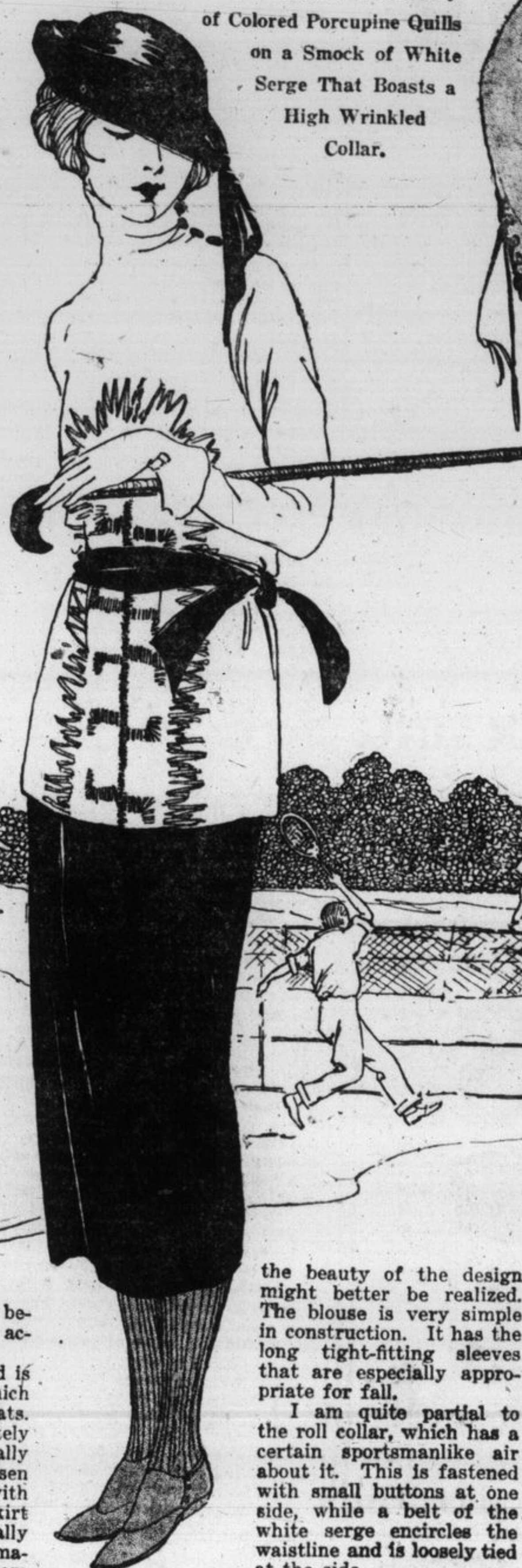
Pioneer Effects in the New Fall Designs for the Tournament Girl Who Is Going in for Leather Trimmings, Kid Hats and Warm Flannel Smocks.



At Left—An Orange Velvet Blouse with an Interesting Neckline Fastens Itself Up by One Sleeve.



At Right—White Kid Embroidered in Gold and Faced with Orange Crepe and a Big White Kid Hat.



At Left—Indian Embroidery of Colored Porcupine Quills on a Smock of White Serge That Boasts a High Wrinkled Collar.



Gray Flannel Blouse Laced Up with Brown Leather Is Worn with a Skirt and Hat of the Leather.

## By Mme. Frances

The Famous Creator of Fashions

THE woman who is interested in sports may welcome some additions to her wardrobe for the varied events which she will attend. Of course such clothes are decidedly different from those worn by the woman who is taking an active part in the different games. These clothes are designed with perhaps more consideration for their beauty than for the practical qualities that a sports-woman finds absolutely essential.

This season there is wide interest in leather and flannel. Sometimes these are combined in most attractive creations or they are used separately with as good results. Leather, too, makes an ideal trimming, and it may be had in all the gray shades as well as those that are more subdued.

It is not confined only to the suit or frock, but is also favored for the smart hat that is worn with such models. Sometimes the dull finish is affected, while equally attractive hats reveal the use of shiny kid.

Illustrated on this page are four of my newest models, and in them I think you may find suggestions that may be of much value to you if you are contemplating some new sports apparel. Of course these are created especially for the spectator, but with some modifications they might be used by the active participant in fall and winter sports.

Decidedly striking is the model of white kid and navy serge. The latter is chosen for the skirt, which is finely pleated. The overblouse is modeled with a square-cut neckline, while the short sleeve is very wide. A delectable touch of color is revealed on the sides, where the blouse is slashed apart and the lining of orange crepe flashes forth.

A large white kid hat gives an inviting finish to this costume for gala sport

events. Of course you might prefer to use a different color combination. If you should have a beige-colored skirt you might like to have the smock of brown suede, which is delightfully pliable, or if you wished to use a white skirt then you might have a bright green or red blouse. When making such changes you would naturally select a hat in keeping with the new color scheme you adopt.

Somewhat more unusual in style is the model with the lap-over skirt, which is cut from brown leather. It, too, is worn with a jumper blouse, which is made of gray flannel. The sleeves on this model are long and tight-fitting, although if you should wear such a creation where balmy breezes invite the shortening of sleeves you could very readily achieve this. All you need do is to remove the lower part of the sleeve, which is joined to the upper by a cord of brown leather.

### Porcupine Quill Embroidery

The trimmings that I have favored on this model are brown leather lacings. They also have a practical mission, as they are used to fasten the blouse. The one-sided fastening lends a note of individuality to this creation, while the long ends of the lace are decidedly decorative. The lacing on the lower sides of the sleeves is more than merely ornamental. You may adjust the sleeve to the exact size of your arm by regulating this fastening.

The neckline favors that which has won the approval of the woman who

dresses well, for it is really most becoming and needs no adorning to accentuate the beauty of its line.

The hat matches the skirt and is developed from brown leather, which lends itself agreeably to flaring pleats.

Flannel is used indiscriminately for skirts or blouses, and is especially good for the former. I have chosen a white flannel skirt to be worn with the orange velvet blouse. The skirt is closely pleated, for this is really the best way of handling such material. Then it allows the freedom that is so desirable, for even those who watch the game may sometimes be tempted to emulate the players.

The orange velvet blouse is cut with a deep V opening, but as if to hold the blouse in position there is a narrow collar band attached to the back of the blouse and fastened at one side of the neck with two gold buttons.

The sleeves reach well over the wrists and show a decoration of gold buttons on the undersides. Buttons also appear on the sides of the blouse and mark the dimensions of the small pocket, that so jauntily holds a kerchief. A white felt hat tops this creation, which will give a distinctive spot of color wherever it may be worn.

While the majority of such models owe their success to the brilliancy of their colors as well as the pleasing lines on which they are fashioned, yet occasionally I find pleasure in evolving something more elaborate.

When planning some new models the other day I chanced to see some exquisite Indian work. At the moment I had been discussing the advisability of using certain leathers, so I suddenly decided that I would use some Indian decorations on the model under discussion.

This is pictured on the page and while you cannot of course see the rich colorings of the original, still I think you will appreciate the Indian design that forms the panel on the blouse. For this I used the porcupine quills and favored the bright reds, blues, greens and white that are so skillfully combined in the Indian's handiwork.

Instead of using leather for the foundation, as I had originally contemplated, I decided to substitute white serge, so that

the beauty of the design might better be realized. The blouse is very simple in construction. It has the long tight-fitting sleeves that are especially appropriate for fall.

I am quite partial to the roll collar, which has a certain sportsmanlike air about it. This is fastened with small buttons at one side, while a belt of the white serge encircles the waistline and is loosely tied at the side.

The hat is a soft draped affair made from beige leather. There is a leather tassel depending from the drape which, of course, is the only trimming, as little is needed to adorn such models.

Topcoats for outing wear are developed in many delightful fabrics. The tweeds, in gray tones or in buff, frequently have very bright colors in the overplaid designs that break their surface. Camel's hair and fleece are also favored for the fashioning of those handsome wraps.

### Slashed Sleeves in Style

One of the most interesting style features in these creations is the introduction of the square sleeve. This has been inspired by the frocks that are modeled on such lines, but it is excellent for the outing topcoat. Raglan sleeves are also used, for they are too well-liked to be readily discarded.

There is variety, too, in the collars.

The tuxedo, which has been so popular of late, still seems to retain its popularity. However, for fall the tuxedo is designed in convertible manner so that it may be buttoned up if desired. The wide collar is often finished with a one-button fastening, while variations of the roll collar show how effective it is when draped about the neck.

In other realms of dress there is much of interest at this time. Perhaps the blouse is especially worthy of mention, as it is a leading factor in present-day attire. While the fabrics from which the new blouses are made do not differ greatly from those that have of late been in vogue, yet undoubtedly the most noticeable feature of the new models is the variety in the sleeves.

It seems as though there are endless ways in which they may be slashed, for of course such sleeves can still be worn with comfort beneath the jacket. Indeed, this tendency is to be preferred to those models that demonstrate great width of material. In the majority of slashed types you will find that at the wrist the fabric is caught together again by a narrow band which not infrequently boasts a ribbon-tie or other interesting decoration.

Beads are lavishly used to decorate the new blouses, while one of the smartest colors is known as antelope. As the brown shades anticipate great popularity this season such a charming color will harmonize well with the brown suit.

Necklines, too, are decidedly varied in the new modes for fall. The bateau and round necklines are still in vogue. Long rever collars are also affected and there are turnover styles which may be worn high or low.

## THE FASHION FORECAST

Little, low Spanish heels will be the striking feature of the shoes and slippers for fall.

10 West Fifty-Sixth Street,  
New York City.

Frances