

### To Everyman

THE first and most important aim of Everyman who desires to succeed should be the same as that of successful business and financial houses—the formation of a Reserve Fund.

A reserve is not only invaluable when reverses or emergencies arise, but it is a guarantee of strength and promotes self-confidence.

Let us guard your reserve and pay you interest on it.

## THE STANDARD BANK OF CANADA

TOTAL ASSETS OVER NINETY MILLIONS

Kingston Branch: J. F. Rowland, Manager.

### War Bond Coupons Cashed Free

The Merchants Bank will cash all War Loan coupons or interest cheques when due, on presentation, without making any charge whatever for the service. If you have not a Savings Account, why not use your interest money to open one with this Bank?

## THE MERCHANTS BANK OF CANADA

Head Office: Montreal, OF CANADA, Established 1884.

KINGSTON BRANCH, FARHAM, VERONA AND ARDEN BRANCHES.

Sub-Agency at Mountain Grove open Fridays.

Safety Deposit Boxes to rent at Kingston Branch.

### VICTORY LOAN COUPONS

We will cash your Victory Loan Coupons or place them to your credit in our Savings Bank where they will draw interest at 3% per annum.

## THE CANADIAN BANK OF COMMERCE

PAID-UP CAPITAL \$15,000,000  
RESERVE FUND \$15,000,000

KINGSTON BRANCH—R. T. Brymer, Manager.

### Childrens' Savings Accounts

We suggest you start your children on the road to Thrift by opening Savings Accounts for them, and then encouraging them to increase their balances. A small sum will open the account, and by the time a boy or girl is of age there will be a substantial amount for a start in life.



The Manager of any Bank of Toronto Branch will gladly take the few minutes necessary for the pleasant duty of opening Savings Accounts for your children.

## THE BANK OF TORONTO

Safety Deposit Boxes to Rent

## STOCK ISSUE WANTED

A reliable brokerage house is in a position to underwrite an issue of from \$100,000 to \$1,000,000 of an established and growing Canadian Corporation.

Communicate with us by wire or phone, at our expense.

## Corporation & General Investments, Ltd.

INVESTMENT SECURITIES  
88 KING STREET EAST TORONTO  
Phone Ma inf 5016-7.

## Markets Reports

### GRAIN QUOTATIONS

Toronto, June 3.—Manitoba wheat—No. 1 northern, \$1.92 1/2; No. 2 do, \$1.89 1/2; No. 3 do, \$1.85 1/2; No. 4 do, \$1.74 1/2. Manitoba oats—No. 2 C.W., 48 1/2%; No. 3 C.W., 44 1/2%; extra No. 1 feed, 42 1/2%; No. 2 feed 41 1/2%. Manitoba barley—No. 2 C.W., 75c; No. 4 C.W., 75c; rejected, 65 1/2%; feed, 65 1/2%. American corn—No. 2 yellow, 73c; c.f.f., bay ports. Barley—Ontario malting, 65c to 70c, outside. Ontario wheat—No. 2, \$1.50 to \$1.60, f.o.b., shipping points, according to freight; No. 2 spring, \$1.40 to \$1.45; No. 2 goose wheat, nominal. Ontario oats—No. 2 white, nominal, 42c to 44c, according to freight outside. Peas—No. 2, \$1.30 to \$1.35, according to freights. Rye—No. 2, \$1.50, nominal. Ontario flour—90 per cent. patent, \$7.50, bulk, seaboard; 90 per cent. patent, nominal, in jute bags, Montreal and Toronto. Manitoba flour—Track, Toronto, cash prices: First patents, \$10.50; second patents, \$10.00. Milled—Carloads, delivered, Montreal freights, bag included; Bran, per ton, \$26 to \$29; shorts, per ton, \$26 to \$31; feed flour, \$1.70 to \$2.10. Hay, No. 1, per ton, baled, track, Toronto, \$18 to \$22; straw, \$12 per ton, car lots. Winnipeg, June 3.—Wheat—No. 1 Northern, \$1.89 3/8; No. 2, \$1.86 3/8; No. 3, \$1.82 3/8; No. 4, \$1.71 1/4; No. 5, \$1.54 1/4; No. 6, \$1.39 1/4; track, Manitoba, Saskatchewan and Alberta, \$1.74 1/4. Oats—No. 2 C.W., 48 1/2%; No. 3 C.W., 43 3/4%; extra No. 1 feed, 43 3/4%; No. 1 feed, 41 3/4%; No. 2 feed, 40 3/4%; track, 46 3/4%. Barley—No. 3, w., 77 3/8%; No. 4 c.w., 72 3/8%; rejected, 64 5/8%; feed, 64 5/8%; track, 76 5/8%. Flax—No. 1 N.W.C., \$1.73 1/2; No. 2 C.W., \$1.69 1/2; No. 3 C.W., \$1.41 1/2; condemned, \$1.38 1/2; track, \$1.73 1/2. Rye—No. 2 c.w., \$1.68. Montreal, June 3.—Oats, Canadian Western, No. 2, 60c; Canadian Western, No. 3, 55c. Flour, Manitoba spring wheat patents, firsts, \$10.50. Rolled oats, bag 90 lbs., \$3. Bran, \$22.25. Shorts, \$31.25. Cheese, finest westerns, 16c. Butter, choicest creamery, 29 1/4 to 29 1/2c. Eggs, selected, 33 to 34c. Minneapolis, June 3.—Flour, 29-30c lower; in carload lots, family patents quoted at \$9.15 to \$9.35 a barrel, in 98-pound cotton sacks, shipments, 44.315 bbls. Bran, \$16. Wheat, cash, No. 1 Northern, \$1.40 3/4 to \$1.50 3/4; May, \$1.30; July, \$1.25 3/4. Corn, No. 3 yellow, 54 to 55c. Oats, No. 3 white, 35 3/4 to 36 3/4c. Flax, No. 1, \$1.82 to \$1.84. New York, June 3.—Flour, spring patents, \$8.75 to \$9.25; spring clears, \$7.25 to \$7.75; soft-winter straights, \$7.25 to \$7.65; hard winter straights, \$8.60 to \$9. Rye Flour, fair to good, \$9 to \$9.50; choice to fancy, \$9.50 to \$10. White Corn Flour, \$1.85 to \$2. Cornmeal, fine white and yellow granulated, \$1.85 to \$1.95. Rye, No. 2 western \$1.69 1/2 f.o.b. and \$1.66 1/2 c.f.f. New York. Barley, feeding 71 to 76c and malting \$1 to \$6 c.f.f. New York. Wheat, No. 2 red, \$1.78 1/2; No. 2 hard \$1.79 1/2 and No. 2 mixed durum \$1.74 1/2 c.f.f. track New York first half June shipment. Chicago, June 3.—Wheat—No. 2 red, \$1.69 to \$1.78; No. 2 hard, \$1.69 to \$1.77. Corn—No. 2 mixed, 64 3/4c to 65 1/2c; No. 2 yellow, 65 to 66c. Oats—No. 2 white, 40 1/2 to 41 1/2c; No. 3 white, 39 1/4 to 41c. Rye—No. 2 \$1.60 to \$1.67. Barley—66 to 70c. Timothy seed—\$4.50 to \$6. Clover seed—\$13.00 to \$18. Pork—Market nominal. Lard—\$9.20. Ribs—\$9 to \$10. LIVE STOCK MARKETS Montreal, June 3.—Cattle, butcher steers, choice, \$9.50 to \$10.50; good, \$9 to \$9.50; medium, \$8.50 to \$9; common, \$7 to \$8.25; butcher heifers, choice, \$9 to \$9.50; medium do., \$7.50 to \$8.50; common, \$6 to \$7; butcher cows, choice, \$7.25 to \$7.75; medium, \$5 to \$7; canners, \$2.50 to \$3; cutters, \$3.50 to \$4.50; butcher bulls, good, \$7 to \$7.50; common, \$5.50 to \$6.50. Good veal, \$7.50 to \$8.50; medium, \$5.25 to \$7. Ewes, \$4 to \$7; lambs, good, \$18 to \$16.50. Hogs, off car weights, select, \$10.50; heavies, \$8.50; sows, \$6.50. Toronto, June 3.—Good, heavy steers, \$9.25 to \$9.50; baby heaves, \$9 to \$9.50; butcher steers, choice, \$8.25 to \$8.75; do good, \$7.25 to \$7.75; do common, \$5.25 to \$6.75; butcher heifers, choice, \$7.25 to \$8; do medium, \$6.50 to \$6.75; butcher cows, choice, \$6.75 to \$7; do common, \$5.25 to \$5.75; do medium, \$6.50 to \$6.75; canners and cutters, \$1.75 to \$3; butcher bulls, good, \$4.75 to \$6.25; do fair, \$4.25 to \$4.75; do common, \$2.75 to \$3.75; feeders, good, 90 lbs., \$8 to \$8.50; do short keep, 1,100 lbs., \$8.75 to \$9; stockers, 700 to 800 lbs., \$6.50 to \$7; milkers and springers, choice, \$8.50 to \$10; do common, \$5 to \$7.5; calves, choice, \$10; do good, \$8 and \$9; do common, \$4 and \$7; lambs, \$11 to \$11.75; do culls, \$5 to \$8; spring lambs, per lb., 15c to 18c; sheep, choice, \$7.50 to \$8; do heavy and bucks, \$4 to \$6; do yearlings, \$10 to \$11; do culls, \$2 to \$4; hogs, fed and watered, \$8; do off cars, \$9.25; do f.o.b., \$8.25; do to farmer, \$8. Buffalo, East Buffalo, N.Y., June 3.—Cattle—Shipping steers, \$8 to \$8.75; butchers, \$8 to \$8.50; yearlings, \$8.25 to \$9; heifers, \$5.25 to \$8; cows, \$2.25 to \$6.25; bulls, \$4.25 to \$6; stockers and feeders, \$5 to \$7.25; fresh cows and springers, \$50 to \$120. Hogs—Heavy, \$8 to \$8.25; mixed, \$8.50 to \$8.65; yorkers, \$8.50 to \$8.75; light do. and pigs, \$8.75 to \$9; roughs, \$6 to \$6.25; stags, \$4 to \$5. Chicago, June 3.—Cattle—Top, \$9.25; bulk beef steers, \$8 to \$8.75; fat cows and heifers, mostly \$5.25 to \$6.75; bulls, calves, stockers and feeders steady to 25c higher; bulk bulls, \$4.50 to \$5.75; veal calves, mostly \$8 to \$8.50. Hogs—Top, \$8.20; practically limit, \$8.15; bulk, \$7.80 to \$8.10; pigs, mostly \$5 to 50c higher; bulk, desirable, \$8. Sheep—\$1 higher; prime shorn lambs to city-butchers, \$12.25; bulk, \$10 to \$12; California spring to shippers, \$13.40; packers, \$13.15; native springers, mostly \$12 to \$12.50; bulk fat ewes, \$8.50 to \$3.75; top, \$4.00. GENERAL TRADE Butcher Belleville, 32c to 34c; Brantford, 28c to 32c; Hamilton and St. Thomas, 33c to 35c; Cobourg, 30c; and Woodstock, 30c to 35c per pound. Eggs Belleville, 23c to 27c per doz.; Brantford, 21c to 29c; Cobourg, 25c; Hamilton, 35c; Owen Sound, 22c to 26c; St. Thomas, 25c, and Woodstock, 23c to 25c per doz. Chickens Belleville, St. Thomas and Woodstock, 35c to 40c; Cobourg, 40c; Hamilton, 45c; and Owen Sound, 30c to 35c per pound. Potatoes Belleville, 50c to 65c; Cobourg, 50c; Hamilton, \$1; Owen Sound, 40c to 50c; St. Thomas, 60c to 80c; and Woodstock, 75c to \$1 per bag. Wheat Belleville, \$1.65; Brantford, \$1.55; Cobourg, \$1.25 to \$1.35; Hamilton, \$1.60; Owen Sound, \$1.45 to \$1.50; St. Thomas, \$1.50; and Woodstock, \$1.50 per bushel. Oats Belleville, Cobourg and Woodstock, 50c; Brantford, 45c; Hamilton, 48c to 50c; Owen Sound, 40c to 45c, and St. Thomas, 60c to 70c per bushel. Barley Belleville, 80c; Brantford, 60c; Cobourg, 85c; Hamilton, 70c to 75c; Owen Sound, 60c to 70c; St. Thomas, 75c to 85c; and Woodstock, 90c per bushel. Hay Belleville, baled \$25, loose \$26 to \$27; Brantford, baled \$20 to \$22, loose \$18 to \$20; Cobourg, baled and loose \$25; Hamilton, baled and loose, \$22 to \$25; Owen Sound, baled \$17 to \$18, loose \$15 to \$16; St. Thomas, baled \$20 to \$22, loose \$16 to \$20; and Woodstock, loose \$20 per ton.

### THE KINGSTON MARKET

Kingston, June 3

Dairy Products. Creamery butter, lb., 22 to 30. Dairy butter, 23 to 28. Whey butter, 23 to 25. Eggs, fresh, doz., 25 to 28. Oleomargarine, 25 to 28. Cheese, 25 to 28. Vegetables. Beets, 2 bunches, 10. Cabbage, head, 5 to 8. Celery, bunch, 15 to 18. Lettuce, bunch, 10 to 15. Carrots, 2 bunches, 15. Potatoes, bag, 75. Sweet potatoes, 2 lbs., 25. Meats. Beef. Porterhouse steak, lb., 35 to 40. Round steak, lb., 30 to 35. Boiling cuts, lb., 15. Western carcass, cwt., 18. Pork. Loin roasts, lb., 35. Rib roasts, lb., 35. Pork chops, lb., 35 to 38. Hogs, live weight, cwt., \$11. Bacon, dressed, cwt., \$17. Lamb. Fronts, lb., 30. Hinds, lb., 35. Leg, lb., 35. Loins, lb., 30. Chops, lb., 35. Mutton, lb., 18. Sausage meat lb., 30. Fish. Cod, lb., 15 to 12 1/2. Haddock, lb., 22. Finnan haddock, lb., 18. Haddock, fresh, lb., 13 1/2. Halibut, lb., 25 to 30. Kippers, pair, 18. Perch, lb., 12 1/2. Pike, lb., 15. Salmon, lb., 30 to 40. Steak, cod, lb., 12 1/2 to 15. Trout, salmon, lb., 25. White fish, 25. Herring, fresh, lb., 12 1/2. Poultry. Hens, dressed, lb., 30. Grain. Barley, 1.00. Bran, 29.00. Shorts, ton, 30.00. Buckwheat, bush, 95. Hay, baled, ton, \$18 to \$20. Hay, loose, ton, \$16.00. Corn, yellow feed, bush, 90. Flour, standard (Gov't) cwt., \$5.10 to \$5.35. Oats, local, 55. Straw, baled, ton, \$8 to \$12. Straw, loose, ton, \$8.00. Wheat, local, \$1.80. Hides and Wool. Beef Hides, No. 1, 5c per lb. Lambs, 25. Veals, 14. Kips, 3c. Deacons, 75c to \$1. Horse hides, up to \$1.75. Tallow, No. 1, 5c per lb. Wool, per lb., unwashed, \$8 to 10c. Fruit. Bananas, doz., 30 to 50. Grape fruit, 12 to 15. Lemons, doz., 30 to 40. Oranges, doz., 30 to 60. Women mountain climbers in Switzerland, if they value their complexions, smear their faces with goat to protect them from the rays of the sun. In Japan straw is converted into bags for grain, shoes for the feet, raincoats for the body, roofs for houses, paper mats, screens, beds and numerous other articles.

### MAY MAKE WORLD TOUR

Manager Plunkett Considering Offer to "Dumbells" New York, June 2.—The "Dumbells," the organization of former Canadian soldiers, which is presenting "Bliff! Bing! Bang!" at the Ambassador Theatre, on Broadway, has met with such success that the engagement has been made indefinite, the Shuberts, under whose direction they are playing, announced recently. The original agreement was for a limited engagement of four weeks only. Captain Plunkett has announced that an offer for a world tour, to begin at the conclusion of the United States engagement, has been received. Under the proposed arrangement the tour would begin next winter. The company would sail from Vancouver and the first engagement would be played in Honolulu. Later they would appear in Manila, Yokohama, Nagasaki, Kobe, Shanghai, Melbourne, Sydney, Queenstown, Wellington, Bombay, Calcutta, Calcutta, Port Said, and then in Europe, where they would travel through Spain, Portugal, Italy, France and Belgium. On the return trip they would appear in London, England. Captain Plunkett, who manages the company, said the offer was under consideration.



### Prince George Hotel

TORONTO  
In Centre of Shopping  
and Business District  
250 ROOMS  
100 with Private Bath  
EUROPEAN PLAN  
E. WINKETT THOMPSON, GEN. MGR.



### ORINOCO

Cut Coarse, for Pipe Use  
Cut Fine, for Cigarettes

## G. Hunter Ogilvie

### INSURANCE AND GENERAL BROKER

In daily communication with Montreal and Toronto Stock Exchanges. Dominion, Provincial and Municipal Bonds for sale.

281 KING STREET

Phones 568j & 1087

## City of Edmonton

7% - 20 Year Bonds

Interest June and December

Price 99, to yield 7.10

## Bongard, Ryerson & Co.

"The Home of Good Investments."

237 BAGOT STREET. PHONE 1728.  
85 Bay Street, Toronto.

### Re-Invest Your June Interest and Dividends

Issue	Dec.	Yield
Province of Ontario	6%	1936 6.05
Province of Alberta	6%	1936 6.25
Province of Saskatchewan	6%	1936 6.25
Greater Winnipeg Water District	6%	1951 6.30
Man. .....	6%	1925 6.30
City of Toronto, Ontario	6%	1937 6.25
City of Toronto, Ontario	6%	1940 6.50
City of Saskatoon, Sask.	6 1/2%	1928 7.00
City of Fort William, Ont.	5%	1928-35 6.57
Town of Walkerville	6%	1928-35 6.57
East Kildonan S. D., Man.	6%	1933 7.25

Wire or telephone your orders at our expense.

## W. A. Mackenzie & Co., Limited

Government and Municipal Bonds—Corporation Securities  
42 KING STREET WEST TORONTO, CANADA

### FOR SALE

DR. GOODWIN'S RESIDENCE, NO. 1, ALICE STREET — Also 10 ft. lot east of this house. For particulars apply:—

## KINGSTON AGENCIES, Limited

J. O. HUTTON. B. G. ROBERTSON  
Phone 703 67 Clarence Street.

## Farmers Attention

The Ontario Implement Dealers' Repair Week  
February 21st to 26th

Save time and worry by looking over your machinery NOW, and ordering repairs needed from Deering, McCormick, Peter Hamilton, Bissell and De Laval.

## F. M. CLOW

Phones 1015w and 1436.



VICTOR RIDDER  
Commissioner of the state board of charities for New York and field commissioner of the National Welfare Council, who is a visitor in Canada.

Paid-up Capital \$ 7,000,000  
Reserve \$ 15,000,000  
Resources \$ 220,000,000

### Form a Good Connection

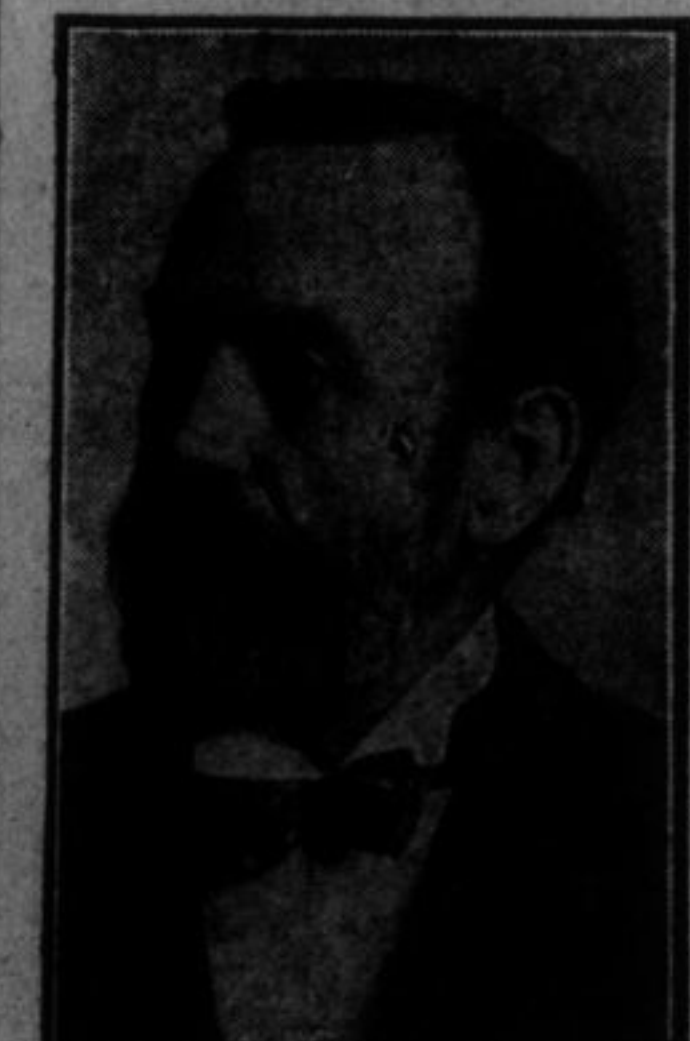
A savings account in The Bank of Nova Scotia gives the depositor a business connection with one of Canada's leading financial institutions.

Such a connection in years to come may be of great value and assistance in business.

Why not form the connection today by opening your savings account?

## THE BANK OF NOVA SCOTIA

A. N. Lyster,  
Manager, KINGSTON



LATE E. H. BIGGAR  
Widely-known publisher and writer, of Toronto, who passed away suddenly on Wednesday from hemorrhage of the lungs.

Glass was used by the Romans in Pompeii show windows of glass used the time of Tiberius, and the ruins of before the year 79.