

# In the Automobile World

## EXCEPTIONAL ADVICE FOR THE MOTOR USER

### Hints Tell of Many Little Car Requirements.

A little inspection to see that everything is O.K. before cranking your motor saves time.

Don't use the same can or bucket for water and gas. A particle of water or dirt in the gasoline often causes a peck of trouble.

Don't use the choke except when necessary. It is better to have a few carburetor "pops" than too rich a mixture.

Use all the air in the mixture you can.

Never leave a car with the shift lever in gear, and always examine this lever before starting the engine.

Safe driving demands a full and undivided attention. "Don't talk to the motorman" is just another way of saying "Don't fool or flirt with the driver."

Don't follow a street car or any motor vehicle too closely. A safe distance means you have stopping space, no matter how quickly a stop is made ahead of you. Keep a safe distance from street cars when they turn a corner.

Don't turn corners rapidly. Don't release your clutch to turn a corner. You can better control your vehicle with clutch in and you are less liable to skid.

Don't try to pass another vehicle on a hill or a curve. Be far enough back to get a view of the road ahead before getting into the path of opposite traffic.

Don't take a chance at railroad crossings. One railway company had over 500 safety gates broken last year. Make the grade crossing in intermediate or low gear.

Don't pass the rear of a train or car until you can get a view of the traffic or train that may move in the opposite direction.

In case of accidents, get the information necessary and give information desired, but keep your comments to yourself. Give assistance to injured people or disabled vehicles.

Do not go down a hill faster than you would go up the hill in the same gear. Use your motor to assist the brakes. Don't coast with the clutch out, set your hand brake, but if likely to get hot, alternate with foot brake. Better not turn off the spark or much gas may work by the pistons. Do not close the throttle or the suction may draw oil. Idle the motor so that it does not pull. The advanced spark gives you the greatest power, so don't retard it on a pull to prevent a spark knock. Shift to a lower gear.

Start your vehicle in low and let your clutch in easily. You put unnecessary strain on the clutch by starting in a higher gear. Better shift gears at the foot of a hill than on the hill.

Spinning wheels in a hole dig the hole deeper. Don't throw stones and sticks in front of the wheels. Jack up and put some solid base under them.

Don't use chains unless necessary; they destroy tires and streets. Use chains on both wheels or none at all. On large trucks use enough chains to have one under the wheels at all times.

Tire mileage depends on care or abuse. Riding car tracks bumping curbs and going rapidly over rough roads cut down the mileage. Proper inflation is most important for pneumatics. Use a gauge.

Governors on motor truck engines are set at a speed that develops the greatest pulling power. A driver who tampers with a governor or opens it for speed not only violates the traffic laws, but raises operating expenses above profits.

Don't try to operate your engine when it lacks compression. Valve setting and clearance should be checked at least monthly.

Keep your vehicle clean. It adds to its usefulness and gives others a good impression. If you enter a service station with a dirty, greasy and mud-covered engine, the mechanic gets the idea you don't care how the job is done.

Never permit the clutch pedal to strike the under part of the floor board when you let it come up. This partly holds out your clutch and ruins the plates.

Loose steering connections are dangerous not only to a driver but to the public.

Jack up the front and rear axles and test the wheels for side play. Adjust the wheel bearings or you will have to replace them. Line up the front wheels so that they toe in slightly in front or you will not get half your tire mileage.

Keep springs tight at the axles; looseness here causes most spring breaks. Springs seldom break under weight; it is the rebound force. A loose bolt or a lost oil cup may cause a breakdown. Don't neglect the little items.

Check your engine oil level daily, your transmission and rear axle levels weekly. Keep them up to level, but not above.

Don't try to get too many miles out of your oil. The second 500 miles may cost you far more than a change of oil would.

Don't forget that the radiator water should be changed. Clean water without acid or mineral gives best results. Never put any matter into the radiator to stop a leak. They stop the circulation.

Don't change your parts or construction from the manufacturer's standard; you may have trouble getting parts and service and throw the

### design out of balance.

Do not antagonize the public or destroy property. Motor vehicle transportation, either freight or passenger, must have a favorable public opinion or they are likely to legislate against the industry and levy increased taxes.

### A Temporary Fuse.

A burned out fuse on one's car in the country is very inconvenient if there are no spares with which to replace it but if the motorist will carry a little tin foil in his box of odds and ends he can make a serviceable temporary repair in a minute. As a matter of fact anyone who smokes cigarettes or chews gum or eats candy on the road usually has some tin foil on his person and so it is not necessary to make a special point of including it with the tools.

To rehabilitate the burned fuse it is wrapped with one or two layers of the foil and re-inserted in the fuse box. Care should be taken not to wrap the fuse too heavily, as if this is done damage is liable to result to the wiring if it is suddenly stressed with an overload.—Motor for January.

### Gear Ratio.

On the cars which were made several years ago the gear ratio between the engine and rear wheels averaged about three and one-half to one. On most of the cars at the present time the gear ratio is nearer four and one-half to one. This is made possible by the use of the present high speed engine. This means that it is comparatively easy to start most of the modern cars on second speed with no serious results. The only possible damage that could be done by starting on second or even on third would be either stalling the engine or causing excessive wear on the clutch, due to the unnecessary slippage required to get the car started. In starting up-grade or under favorable conditions it would be better to use first speed, but in starting on level roads or on down-grades your second speed should be entirely satisfactory.

### An admirable lifter for use in raising the battery out of the car may be made by having what are known as harness snaps riveted on the ends of a leather strap, perhaps an inch wide and a little longer than the battery. When this is snapped into place it makes a convenient handle for juggling the battery around.

### Watch out for steam at radiator vent, as it indicates that the engine is overheating, a condition which may result in serious damage to the engine if not taken care of in time. Overheating burns up the oil, causing friction, loss of power, and scoring cylinders.

# GRAY-DORT

## Watchful Eyes Guard Its Quality

THERE is much more than mere routine to the elaborate system of inspection which guards the supreme quality of the Gray-Dort car.

Built into every car is the pride of an organization over sixty years experienced in the production of satisfactory transportation.

—each skilled craftsman looks upon the Gray-Dort as his personal product, by which he will be judged in the eyes of the world.

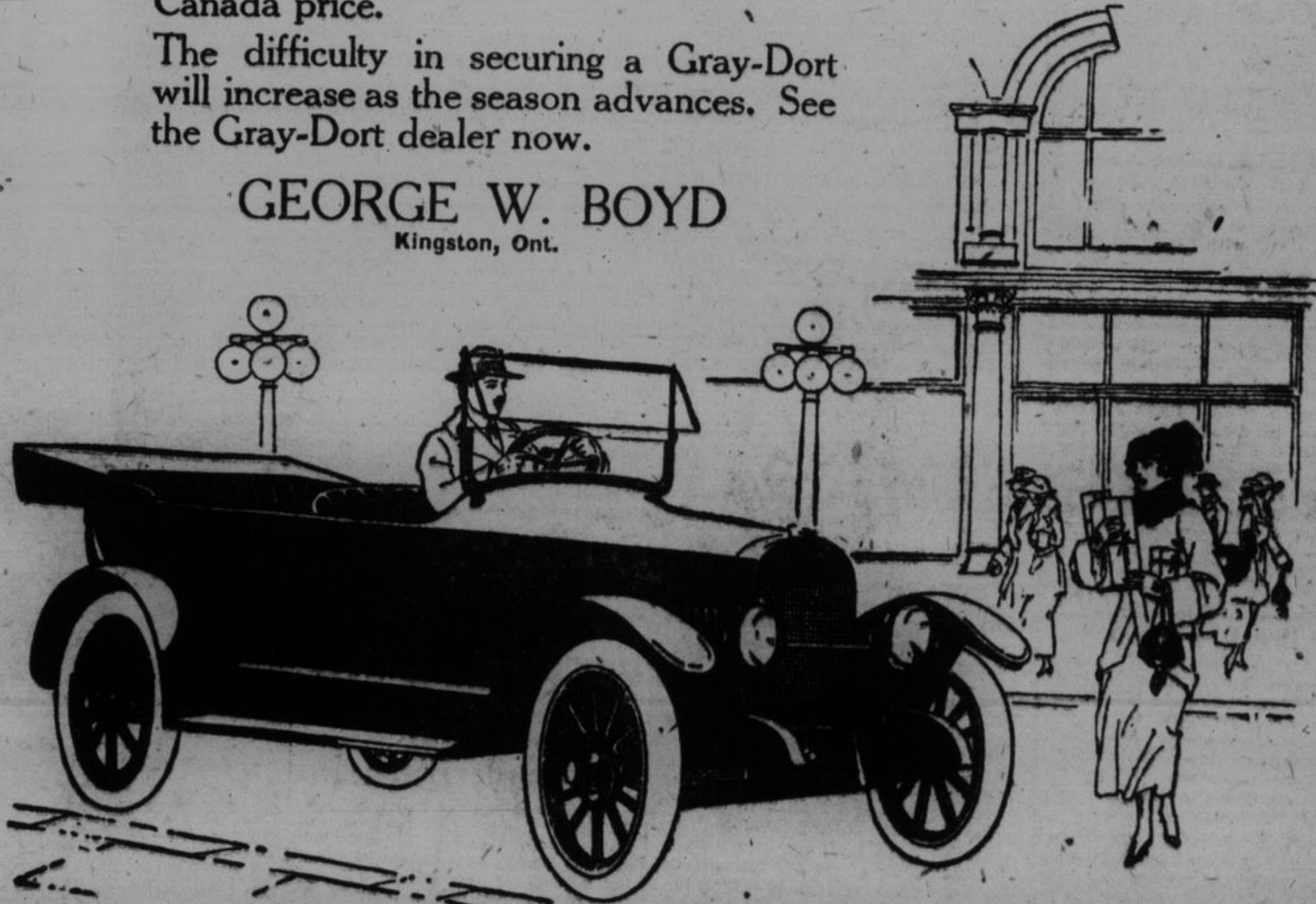
The result is a carefulness—a precision—of construction which is matched only by the fineness of the materials with which our men work.

The final result is freedom from ordinary motor car troubles and the long life which comes only with perfect harmony in every working part.

Compared with other cars, the Gray-Dort is worth much more than its fair made-in-Canada price.

The difficulty in securing a Gray-Dort will increase as the season advances. See the Gray-Dort dealer now.

GEORGE W. BOYD  
Kingston, Ont.



## GRAY-DORT MOTORS, LIMITED

## DODGE BROTHERS MOTOR CAR

It is owned by many who can afford to pay anything they wish for the things they use.

It is always bought because of its known value and its after economies.

The gasoline consumption is unusually low  
The tire mileage is unusually high

MARCUS OBERNDORFFER  
124 CLARENCE STREET, KINGSTON, ONT.  
PHONE 1984.



### Newest Notes Of Science

Apparatus to furnish warm dry and sterilized air to the lungs has been invented by an English doctor, who believes insomnia can be cured by lessening their moisture.

Private shipyards in the United States last year built 1,758 merchant vessels of 2,831,343 gross tons for American owners and 25 of 29,382 gross tons for foreign owners. Camels imported from Asia have been tried in Australia with fair success for hauling wagons in regions lacking railroads.

One of the Federated Malay states is planning to foster the production of the African oil palm by granting land to planters.

Beans planted in cornfields can be gathered with a new harvesting machine narrow enough to be driven between the rows of corn.

A fax harvesting machine of English invention seizes the grain in bunches, digs its roots from the soil and covers it to one side with a belt.

A woman is the patentee of a long handled implement for passing over wall paper a lump of material which removes all dust, and dirt from the paper.

In an English city street cars are being used as travelling kitchens in which meals are cooked en route and served to the public.

Alaska mineral production last year is officially estimated at \$22,070,000, making a total for the territory in excess of \$460,000,000.

Leather made in India from lizard skins is being used for women's and children's shoes and other articles formerly requiring calf skin or kid.

For motor truck owners there has been designed a compact device to record the cost of operating a truck in terms of material, time and distance.

Automatic signals of English in-

vention to be attached to the rear of an automobile to show that it is going to stop, reduce its speed or change its direction are equally noticeable day or night.

A rheostat to be mounted on an automobile steering column has been invented by a Pennsylvanian to regulate the current supplied to headlights and give them eight different degrees of brilliancy.

To enable the blind to read a Vienna scientist has invented a hand-driven phonograph on which records using a series of dots that reproduce buzzing sounds in an easily learned code are employed.

For threshing machines an automatic governor has been designed that prevents straw wrapping around the cylinder or entering the feeder until what already is there has been taken care of by the cylinder.

### INDIGESTION

"Pape's Diapepsin" makes Disordered Stomachs feel fine at once!

Lumps of indigested food causing pain. When your stomach is acid and is gassy, sour or you have heartburn, flatulence, headache or dyspepsia, here is speedy relief—no waiting.

Eat a tablet or two of Pape's Diapepsin and instantly your stomach feels fine. All the indigestion, pain, gas, acidity and misery in the stomach caused by acidity ends.

Pape's Diapepsin tablets cost little at any drug store, but there is no surer or quicker stomach antacid known.

# McLaughlin Motor Cars

When better cars are built, McLaughlin will build them, and a real Canadian product throughout.

### Prest-O-Lite Batteries

Built in Canada by Canadian workmen and with Canadian capital.

### Michelin Tires and Tubes

The world's best tire—built by one of the oldest tire manufacturers. Direct from Clermont, Ferrand, France. Real Egyptian Cotton used.

### Gabriel Snubbers

They do stop the shock when all other devices fail.

### Oils, Greases, Accessories

Real Bargains in Good Used Cars.

## Blue Garages, Limited

Phone 567 Corner of Queen and Bagot Sts. QUALITY OPEN ALWAYS SERVICE

Emergency Priming on the Road. When it is necessary to prime the engine on the road and no other means is at hand, a valve cap tied to a bit of string and lowered into

the gasoline tank will bring up enough gasoline to prime one cylinder. Obviously the operation need only be repeated as often as necessary to get a start.