

Studebaker

SPECIAL-SIX SEDAN

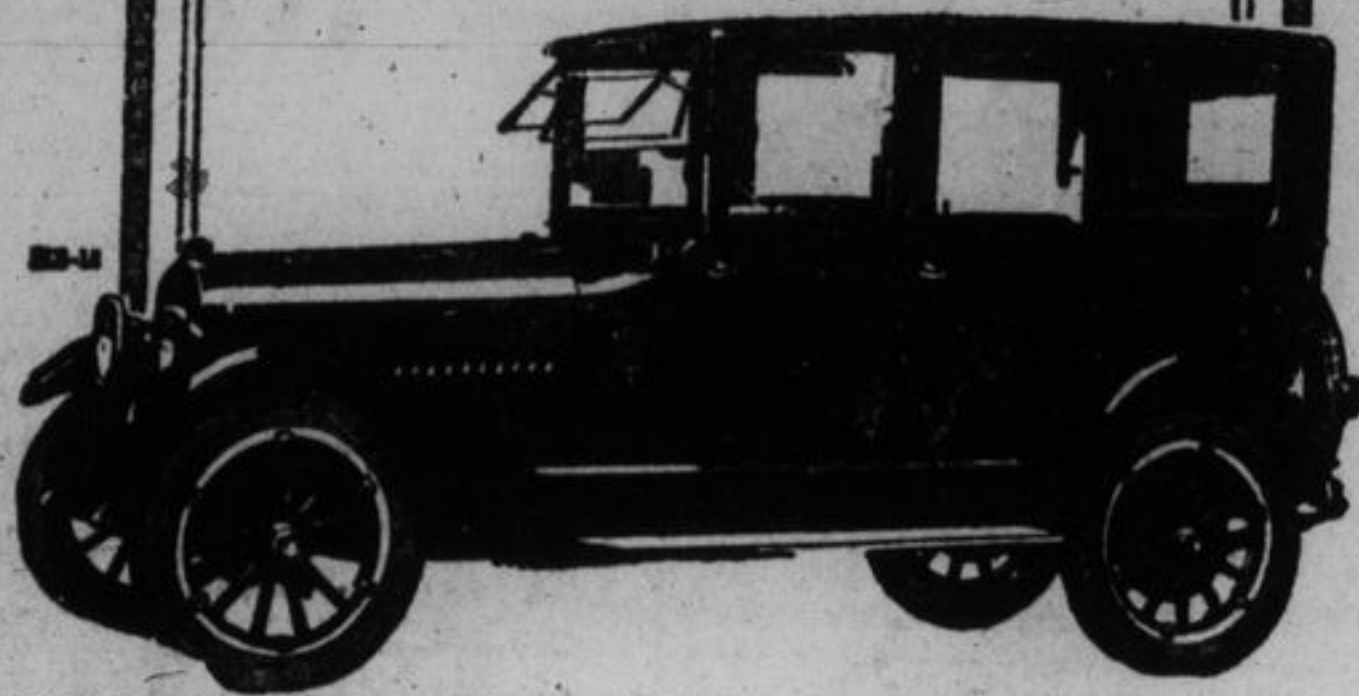
The SPECIAL-SIX Sedan makes an instant appeal to those who demand the utmost in closed car convenience, comfort and beauty—it is, indeed, a rare combination of elegance and practical utility.

50-H.P. detachable-head motor; 119-inch wheelbase, giving maximum comfort for five passengers.

All Studebaker Cars are equipped with Cord Tires—another Studebaker precedent.

Built in Canada.

KINGSTON AUTO SALES CO. LTD.
Cor. Brock and Montreal Sts.



REMOVAL NOTICE

Robinson & Wiltshire

Auto Repair Shop is now located at MARTIN'S GARAGE, 110 CLERGY STREET. All kinds of work promptly attended to. PHONE 1127.

SCOTT'S GARAGE

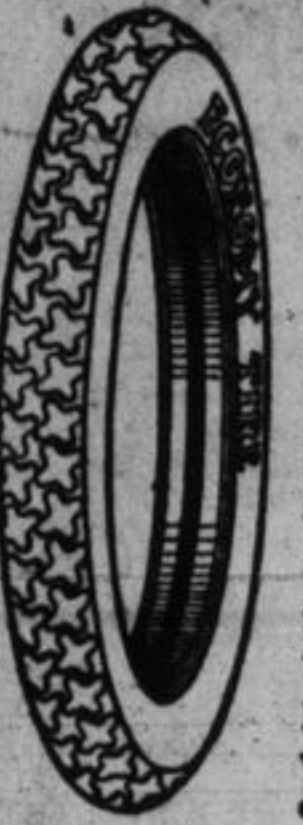
Repairs, Washing and Storage. One 1912 McLaughlin Touring car for sale cheap for a quick buyer. 225 BAGOT STREET Phone 1094.

ELLIOTT & WILLIAMSON

AUTOMOBILE REPAIRING Ford Cars a specialty. Test Service in connection. Phone Shop 1030. Res. 15872. 375 BROCK STREET

65% SAVING ON TIRES

Guaranteed 3500 miles



Economy Tires are reconstructed with three plys of additional fabric, which gives you the assurance of 3500 miles and more. Our adjustment guarantee of 3500 miles goes with every tire.

Size	Tires	Tubes	Size	Tires	Tubes	Size	Tires	Tubes
30x3 1/2	\$ 5.00	22.25	32x4	\$11.50	36.50	32x4 1/2	\$ 8.25	22.25
32x4	8.50	2.25	32x4 1/2	12.50	3.00	32x5	11.75	4.10
32x4 1/2	11.00	2.75	32x5	13.00	3.10	32x5 1/2	14.00	4.25
32x5	11.25	2.50	32x5 1/2	13.25	2.50	32x5 3/4	14.25	4.50
32x5 1/2	11.50	2.50	32x5 3/4	13.50	2.50			

Send \$2.00 deposit on each tire and \$1.00 on each tube—balance C.O.D. subject to your examination of goods. When ordering state whether straight-side or clincher. Non-skid or plain tires same price. A 6% discount is allowed when full amount accompanies order—you save collection charges. Refiner free with every tire.

ECONOMY TIRE CO. Dept. 211 11-13 Jarvis St., TORONTO

Tires Tires Tires

Try Our \$17.00 Tire at
W. H. COCKBURN & CO.

Corner Wellington and Princess Street. Phone 216.

FORDSON TRACTOR

WHEN you can't plow till it rains, and rain is late in coming— That's when a Farmer Needs a FORDSON

VanLuvén Bros.

Ford Sales and Service 34-38 Princess St. Phone 1609.

AUTO TALK

WEAK AMMONIA SOLUTION SAVES MOTORIST'S SUIT

Even the most careful motorist may spill a drop of the sulphuric acid solution—battery men call it electrolyte—on his clothes or on the running board of the car when testing its specific gravity with a hydrometer syringe.

The damage resulting from such an accident may be averted if a small bottle of ammonia is kept in the garage where it is handy. Promptly applied where the acid is spilled, the ammonia counteracts its effect and saves clothes, shoes or a bad spot on the running board.

Ammonia may also be used to clean corrosion from connections and terminals of the storage battery.

Are Motorists Selfish?

Does auto-owning and auto-driving tend to selfishness? The following from the Bowmanville Statesman would seem to prove the point: A minister visiting here told us that he was taken to Newcastle to see a friend and decided owing to the great number of autos passing all day long to chance a ride. He has a different opinion of humanity since that day, for many autos passed him with vacant seats, but not once was he asked to have a ride and he "footed" it the entire five miles. Commenting on a similar circumstance, the Orilla Packet suggests that this "demon of selfishness has infected the drivers of motor vehicles," and adds: In towns, of course, it is hardly practicable in general to stop and pick up anybody and not often necessary. But one might expect the practice to be general on country roads. It is not so, however. The Barrie Examiner, referring to the matter says: All owners of cars are not like this, but from the number of empty seats seen, it is a safe guess that many owners of automobiles are not concerned in giving a lift to less fortunate persons who have to use the "Shank's poodle."

Spark Plug Construction.

The purpose of the spark plug is to carry the spark to the tip of the cylinder and the construction of the plug in one or more pieces does not make any material difference so long as this is properly done. However, the plug which is so made that the porcelain may be removed has the advantage of being easier to clean, as the core may be readily taken out and wiped with a piece of waste. In doing this, however, it is important not to lose the little gaskets, because without them the plug will leak when replaced. It is also important to see that the points are properly spaced—three times as the thirty-second of an inch. The porcelain should not be permitted to come in contact with emery cloth or sandpaper, or the glaze will be taken off and the life of the plug will be shortened.

PROPER USE OF CHAINS DOES NOT INJURE TIRES

Speaking broadly, the proper use of tire chains under conditions when their use is highly desirable, does not injure the tire. To be more specific, it is not wise to keep chains on continuously when driving over brick or concrete roads. But when driving on dirt roads when they are muddy, or on pavements when they are coated with snow and slush, chains sink into the soft road surface and give positive traction without the slightest injury to the tires if they are loose enough to constantly change position. Chains clamped tightly to the tire so they continually press in one position soon will cut into the soft rubber of the tire, or at least will weaken the tire's structure materially. But there is no danger of this if the chains are correctly put on.

HOW FAR DOES CAR TRAVEL IN SECOND?

In one second a vehicle traveling 20 miles per hour will cover 29 feet; 25 miles per hour, 35 feet; 30 miles per hour, 44 feet. Take no chances.

Hood Dulls First.

Due to the various degrees of temperature undergone by the hood and machine, this part is first to lose its fine finish. Especially after rain, when the water is likely to dry on the hood, due to the warmth, more rapidly than on the rest of the car, the hood should be wiped dry as soon as the car is in the garage.

Waste Causes Trouble.

If cotton waste is used to clean the engine, often the lint from it sticks to the parts and when the hood is down, some of them enter the carburetor. This causes the fuel to flow irregularly and sometimes stops the flow altogether. Cotton cloth, therefore, is better for this purpose.

Tire Preservative.

Painting tires with liquid rubber, to which whitening has been added, gives them an attractive appearance and helps to preserve them. There are many tire-painting compounds on the market, some of them intended to fill small cuts and scratches as well as give the shoe a better appearance. When sealing over cuts and bruises these preparations also tend to keep moisture from working into the fabric.

An excellent compound for the purpose you mention is made by stirring five pounds of whitening into a quart of gasoline. After mixing thoroughly, add a quart of rubber cement. A cold patch cement will do. Then apply with a brush like any paint.

Tires That "Bloom."

"Blooming"—sometimes it's a slang term, sometimes it's a flowering plant, and again it may apply to tires. When the rubber tread on an auto casing changes color it is said to "bloom." This means that the rubber turns a grayish white with a slight yellowish cast. Although "bloom" is seldom noticed on a tire that is light in color, it sometimes shows on black treads, especially if the tires are allowed to remain in storage.

Cycle Prices Still Up.

Motorcycle prices will not wobble in the wake of the recent downward trend of automotive prices. This fact has been definitely stated by every manufacturer in the cycle industry, following a meeting of the Motorcycle and Allied Trades Association in Chicago.

One Cause of Backfire.

A backfire or "pop" back through the carburetor may indicate insufficient intake valve tappet clearance. If the intake valve does not close, the burning charge escapes through the valve and ignites the incoming charge in the manifold. The loss of compression thus causes loss of power, and the gas blows back through the carbureting system for the time being.

"Missing" Mystery Less!

A common yet at the same time mysterious cause of an engine missing explosions is water in the carburetor. When trying other causes of skipping, try draining the carburetor. Catch some of the fuel in the hand and note if globules form on top. They reveal the presence of water.

Dry Cells Connections.

The connections on dry cells should always be kept tight. Any one connection in a series which happens to be loose will cause difficulty starting. The vibration of the car is very apt to loosen these, and a frequent inspection will often times save a lot of delay in starting the engine.

Triggers.

Carry two good blocks of wood on the truck at all times, to be used when stopping on a hill. They may prevent a bad accident that would probably cost the driver his job and the owner untold expense.

"A careful man does not need to tell you he is sorry," says the Safety League.

ECZEMA

You are not alone in suffering from this skin disease. It is the most common skin ailment and is caused by an irritation of the skin. It is often accompanied by itching and burning. It is a disease that can be cured by the use of BEECHAM'S PILLS.

When your head feels like a basket of broken bottles—you need BEECHAM'S PILLS

Stomach or bowel disorder poisons the blood and thus irritates the rest of the body.

Largest Sale of Any Medicine in the World. Sold everywhere in Canada. In boxes, 75c.

Big Leaguers Use Absorbine

Many of the stars in the big leagues use and endorse "ABSORBINE" for the rub down after the game.

They know that "ABSORBINE" keeps their bodies strong and properly toned and prevents aches in joints and muscles.

"ABSORBINE" is the ideal skin-care preparation and is used by athletes, soldiers, sailors, and all who are on their feet.

Every traveler should make it a habit to carry "ABSORBINE" in a small bottle. It is sold in 15c and 25c bottles. W. F. YOUNG, Inc., Lyons Building, Montreal.

Painting and Varnishing

We can give your car anything from one coat of varnish to a real "Factory Finish," and can guarantee our work. Tops repaired and renewed, finished and waterproofed—in fact, we can do anything required of a real first class automotive garage.

Quick Service—Big, Clean, Accessible Shop — Largest stock of Parts and Accessories between Toronto and Montreal.

OPEN ALWAYS

Blue Garages, Limited

Phone 567.

H. M. FAIR, Manager.

Velie Model 48

Compare this car with any Light Six, similarly or more highly priced, and be convinced of the superior value of the VELIE.

- CONTINENTAL ENGINE.
- TIMKEN AXLES AND BEARINGS.
- FOUR-BEARING CRANK SHAFT.
- BLUR STARTING AND LIGHTING.
- BORG & BECK CLUTCH.

Other details to correspond.

KENDRICK & VANLUVEN

DISTRIBUTORS
Phones 1868 and 81.

Willard

Willard Attention Now

WILL SAVE YOU ANNOYANCE AND EXPENSE LATER ON OUR SERVICE AND ADVICE are the result of years of battery experience. We most strongly recommend great care in keeping your battery well charged while car is in use, and WINTER DRY STORAGE for it immediately when car is laid up.

Our workmen are experts—our charges most reasonable. Send them to us—Kingston's only Battery Specialists.

WILLARD SERVICE STATION

10 Brock Street Phone 1840. I. LESSES, Prop.

NOTICE

Cleveland, Hyslop and Humphrey Bicycles — At Reduced Prices —

Bicycle Tires and Auto Traction Tread Covers. Special prices. See window display. Carpet Cleaning and Laying.

H. MILNE

212 BAGOT STREET

1870 Our Golden Jubilee 1920

The High Cost of Luxuries

THE PEOPLE of this continent spent for life insurance premiums in 1919 about one billion dollars. At the same time they spent for tobacco over two billions of dollars, and for candy products fully one billion dollars.

We do not argue against the use of either of the luxuries referred to, or of others that might be mentioned. Our query is—does a fair proportion of the people's surplus earnings go into life insurance? Could we not "change the emphasis" and secure more protection while perhaps enjoying fewer luxuries.

The price of a "Standard" or a "Super" paid weekly until every \$1000 of Endowment Insurance.

A saving of only 75c. per day would assure to the wife of a man aged 35, she being the same age, a monthly income for life of \$50. Every month throughout her life the remittance would continue and in the event of her death within 30 years, the monthly payments would be continued to the wife's estate—that is \$40 monthly payments would be guaranteed.

Write for our booklet: "A Guaranteed Monthly Income"

The Mutual Life Assurance Company of Canada

Waterloo, Ontario
S. Roughton, District Agent
Kingston, Ontario.

Maxim Batteries

give Maxim Service and are Made-in-Canada. They are guaranteed. Also all our repairs. Try our Free Testing Service

Kingston Battery Service Co.

Cor. Queen and Bagot Streets.

GRAND TRUNK RAILWAY SYSTEM

AGENCY FOR ALL STEAMSHIP LINES

Special attention given your family or friends going to or returning from the Old Country. For information and rates apply to J. F. HANLEY, C.P. and T. A. G.T. Ry., Kingston, Ontario. Open day and night. Phone 92.

CUNARD ANCHOR DONALDSON

REGULAR SERVICES

MONTREAL—GLASGOW
Nov. 20 Cassandra
Dec. 2—(Christmas Service) Cassandra
Dec. 30/Jan. 13/Jan. 20 Saturnia
Jan. 18/Mar. 11/Apr. 20 Saturnia
N. Y., GLASGOW, (via Moville)
Nov. 13/Dec. 11/Jan. 15 Columbia

NEW YORK—LIVERPOOL
Nov. 15/Dec. 13/Jan. 16 K. Aug. Vict.
Nov. 29 Vassari
Nov. 20/Dec. 25/Jan. 22 Carmanis

N. Y., PLY., and CHER.
Nov. 25/Jan. 4/Jan. 11 Caronia
N. Y., CHERBOURG and SOUHEAMPTON
Nov. 23/Dec. 14/Jan. 25 Imperator
N. Y., PLY., CHER., HAMBURG
Dec. 9/Jan. 13/Mar. 1 Saxonia

N. Y., NAPLES, PATRAS, DUBROVNIK AND TRIESTE
Nov. 19 Pannonia
Nov. 17 Italia

For rates of passage, freight and further particulars apply to local agents or THE ROBERT REFORM CO., LTD. General Agents

CROS

TO EUROPE

QUEBEC TO LIVERPOOL
Nov. 19/Dec. 13 Emp. of Britain
Nov. 25 Victorian
Nov. 27/Dec. 30 Emp. of France

MONTREAL—LIVERPOOL
Nov. 20/Dec. 24 Minedoob
Nov. 24/Jan. 7 Metagama
Dec. 10/Jan. 15 Melita

MONTREAL—GLASGOW
Nov. 25/Jan. 6 Pretoriana

MONTREAL—HAVRE—LONDON
Nov. 19 Grandiad
Dec. 11/Jan. 21 Cornicob

Montreal—Southampton—Antwerp
Nov. 19/Dec. 21 Scandinavian
Nov. 24 Sicilian
From St. John N. S.
Apply local S. S. or Railway Agents
1 KING STREET EAST
TORONTO, ONT.

ORDER YOUR FALL SUIT NOW

Call and pick out the cloth now for your new suit. We make both Ladies' and Men's Suits. Prices reasonable. You can also bring in the cloth and we will make it up for you.

M. YAMPOLSKY

323 PRINCESS STREET Phone 2119.

A great victory has been won for ourselves when selfishness has been defeated. Love is sunshine, hate is shadow, therefore let us dwell in love.