

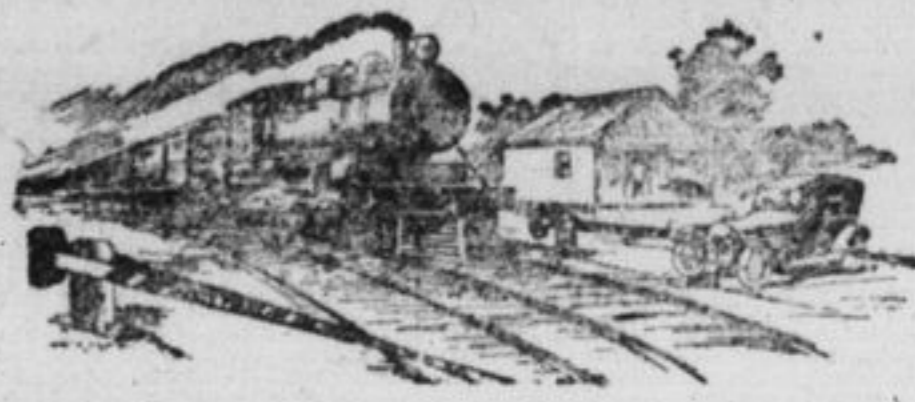
# CROWN LIFE

## BETTER THAN A BANK

Invest your savings in a Crown Life Policy. It is worth far more than a Bank Deposit to You and Your Family. Our Company pays 90% of Profit Earnings to our Participating Policyholders.

Crown Life Insurance Co., Toronto  
W. H. Penwarden, Kingston District Manager.

1870 Our Golden Jubilee 1920



## Safety First

Life Insurance means safety for the Home. Too often the home circle is broken up when the head of the household dies, but if there is adequate insurance the means will be available to "carry on" until the members of the household are self-supporting.

Life Insurance means safety for the children. Many ambitious boys and girls are deprived of their rightful chance in life owing to the premature death of the father or mother or both parents. They are at work when they should be at school. Life Insurance would have given them their golden opportunity.

Life Insurance means safety for the widow. Where the husband dies unexpectedly, in a multitude of cases, the widow is compelled to support herself and children by hard and unaccustomed toil. Life insurance would render this unnecessary.

Adopt the policy of "Safety First" for the sake of the children, the wife and the old home.

The Mutual Life of Canada  
S. Roughton, District Agent  
Kingston, Ontario.

## THE MARKET REPORTS

### GRAIN QUOTATIONS.

**Toronto.**  
Toronto, Oct. 8.—Grain dealers on the Toronto Board of Trade were making the following quotations: Manitoba wheat—No. 1 Northern \$2.42 1/2; No. 2 Northern, \$2.39; No. 2 Northern, \$2.34; No. 4 wheat, \$2.13. In store Fort William: Manitoba oats—No. 2 C.W., 72c; No. 3 C.W., 69 1/2c; extra No. 1 feed, 68 1/2c; No. 1 feed, 68 1/2c; No. 2 feed, 64 1/2c. In store Fort William: Manitoba barley—No. 3 C.W., \$1.09 1/2; No. 4 C.W., \$1.04 1/2; rejected, 95 1/2c; feed, 93 1/2c. In store Fort William: American corn—No. 3 yellow, \$1.55; nominal track, Toronto; prompt shipment.  
Ontario oats—No. 2 white, 66 to 70.  
Ontario wheat—No. 2 winter, \$2.20 to \$2.30; No. 2 spring, \$2.15 to \$2.25, shipping points, according to freights.  
Peas—No. 2, nominal.  
Barley—\$1.12 to \$1.17, according to freights outside.  
Buckwheat—No. 2, nominal.  
Rye—No. 3, \$1.65, nominal, according to freights outside.  
Manitoba flour—\$13.20, new crop.  
Ontario flour—\$10.30 to \$10.40, bulk sea-board.  
Milled—Far lots—Delivered Montreal freights, bag included—Bran, per ton, \$47.50; shorts, per ton, \$54.50; good feed flour, \$3.50 to \$3.60.

**Winnipeg.**  
Winnipeg, Oct. 8.—Wheat—No. 1, Northern, \$2.38; No. 2, \$2.35; No. 3, \$2.27; No. 4, \$2.20; No. 5, \$2.10; track, Manitoba, \$2.35; track, Saskatchewan, \$2.34; track, Alberta, \$2.32.  
Oats—No. 2 C.W., 71c; No. 3 C.W., 68c; extra No. 1 feed, 67 1/2c; No. 1 feed 65 1/2c; No. 2 feed, 63c; track, 68 1/2c.  
Barley, No. 3 C.W., \$1.09; No. 4 C.W., \$1.03; rejected, 94c; feed, 92c; track, \$1.04.  
Rye—No. 2 C.W., \$1.71 1/2.  
Flax—No. 1 N.W.C., \$2.17; No. 2 C.W., \$3.18; No. 3 C.W., \$2.77; condensed, \$2.67; track, \$3.16.

**Chicago.**  
Chicago, Oct. 8.—Wheat—No. 2, red, No. 1 red, \$2.25 1/2; Corn—No. 2 mixed, 91 1/2c to \$1.05; No. 3 yellow, \$1 to \$1.05. Oats—No. 2 white, 56 1/2c to 58 1/2c; No. 3 white, 53 1/2c to 54 1/2c. Rye—No. 2, \$1.75 to \$1.75 1/2. Barley, 97c. Timothy seed, \$18 to \$25. Pork, nominal. Lard, \$19.15. Hogs, \$16 to \$17.50.

**Minneapolis.**  
Minneapolis, Oct. 8.—Flour unchanged to 5c lower. In carload lots, family patents quoted at \$11.40 to \$12.15 a barrel in 98-pound cotton sacks. Shipments, 55,218 barrels. Bran, \$34 to \$35.  
Wheat, cash, No. 1 Northern, \$2.16 1/2 to \$2.21 1/2; December, \$2.11 1/2. March, \$2.07. Corn, No. 3 yellow, 97 to 98c. Oats, No. 1, \$3.07 to \$3.09.

**Montreal.**  
Montreal, Oct. 8.—Oats—Canadian Western, No. 2, 94c; No. 3, 92c. Flour—New standard grade, \$13. Rolled oats—Bags, 90 lbs., \$4.35. Bran, \$49.25. Shorts, \$54.25. Hay—No. 2, per ton, car lots, \$33.

**New York.**  
New York, Oct. 8.—Flour—Market easy; spring patents, \$11 to \$12; spring clears, \$9 to \$10.25; winter straights, \$10 to \$10.50; Kansas do., \$11 to \$12.  
Rye Flour—Market easy; fair to good, \$9.50 to \$10; choice to fancy, \$10.00 to \$10.50.  
White Corn Flour—Market easy; \$3.75 to \$3.85.  
Cornmeal—Market easy; yellow and white granulated, \$3.60 to \$3.70.  
Rye—Market weak; No. 2 western \$1.95 1/2 f.o.b. New York and \$1.87 1/2 c.i.f. domestic.  
Barley—Market easy; feeding \$1.02 to \$1.03 and malting \$1.12 to \$1.13 c.i.f. New York.  
Buckwheat—Market quiet, milling, \$3.50 per 100 lbs.  
Wheat—Spot market weak; No. 2 red and No. 2 hard \$2.28 spot c.i.f. track New York and No. 2 mixed durum \$2.19 c.i.f. to arrive.  
Corn—Spot market weak; No. 2 yellow \$1.20 and No. 2 mixed \$1.19 c.i.f. New York, 10-day shipment.  
Oats—Spot market easy; No. 1 white, 67c.

**East Buffalo.**  
East Buffalo, Oct. 8.—Cattle—Shipping steers, \$15 to \$17; butchers, \$9 to \$14; yearlings, \$5 to \$7; heifers, \$6 to \$11; cows, \$7.50 to \$10; bulls, \$5.50 to \$9.50; stockers and feeders, \$5.50 to \$8.50; fresh cows and springers, \$65 to \$130. Calves—\$6 to \$20. Hogs—Heavy, \$17.50 to \$17; mixed, \$16.75 to \$16.90; Yorkers, \$16.75; light do., \$15.50 to \$16; pigs, \$15.50; roughs, \$12.50; stags, \$8 to \$10. Sheep and lambs—Ewes 50c lower; lambs, \$7 to \$14.25; yearlings, \$6 to \$10; wethers, \$7.75 to \$8; ewes, \$3 to \$6.50; mixed sheep, \$7 to \$7.50.

**Chicago.**  
Chicago, Oct. 8.—Cattle—Top, \$18.25; bulk dry fed, \$15.50 to \$17.90; common and medium steers slow steady; butcher cows draggy, \$5.25 to \$9; canners, \$3.75 to \$4.25; bologna bulls, \$5.75 to \$6.50; choice veals shade easier, \$16.73 to \$17.50; grassy kinds strong, \$6.50 to \$11; stockers and feeders steady; western \$14.25 upward, strong to 25c higher; common kinds, \$7.50 to \$9.25, slow, steady.  
Hogs—Top nearly \$16.10; practical top late \$16; bulk light and butchers, \$15.35 to \$16; bulk packing sows, \$14.25 to \$14.50; pigs steady to 25c lower; bulk desirable kinds, \$13.50 to \$14.  
Sheep and Lambs—Top western, \$13; top natives, \$12; bulk natives, \$11 to \$11.75; sheep steady; top western ewes, \$5.75; bulk fat native ewes, \$5 to \$5.50; feeders slow with bids lower; top feeder lambs, \$12.25.

**LIVE STOCK MARKETS.**  
Toronto, Oct. 8.—Heavy steers, \$14.25 upward, strong to 25c higher; common kinds, \$7.50 to \$9.25, slow, steady.

**Is Your Tongue Furred? Have You Headache?**  
How few feel well this time of the year? The whole system needs house cleaning; the blood is impure; it needs enriching. Nothing will do the work more effectively than Dr. Hamilton's Pills. Take them at night and you feel better next morning. They work wonders in the body while you sleep. Being composed of pure vegetable extracts and juices, Dr. Hamilton's Pills are safe for the young and old alike. Try this wonderful family medicine to-day, it will do you a world of good. Whether for biliousness, headache, lack of appetite or constipation, Dr. Hamilton's Pills will quickly cure, 25c per box at all dealers.



Prince George Hotel  
TORONTO  
In Centre of Shopping and Business District  
250 ROOMS  
With Private Bath  
EUROPEAN PLAN  
Solely for the convenience of our guests.

## A Savings Account for Your Child

The habit of saving develops a child's character, strengthens his will power and provides him with the determination to succeed. Teach your child to save regularly instead of spending thoughtlessly. Open a savings account for him to-day where his money will grow. By the time he reaches maturity he will be equipped with the capital as well as the will power to win his own way in the world.

Paid-up Capital \$ 9,700,000  
Reserve " 18,000,000  
Resources " 230,000,000

## THE BANK OF NOVA SCOTIA

A. N. Lytster, Manager, KINGSTON



choice, \$12 to \$12.50; choice butcher, \$11.50 to \$12; medium butcher, \$10 to \$11.50; light, common, \$8 to \$7; heifers, good to choice, \$8.50 to \$10.50; do., medium, \$8.50 to \$9; stockers, 700 to 800 lbs., \$9.50 to \$10; feeders, 900 lbs., \$10 to \$10.50; heavy sheep, \$5 to \$6; do., yearlings, \$9.50 to \$10; butchers cows, choice, \$8.50 to \$10; do., medium, \$6.50 to \$7.50; do., good, \$8 to \$8.50; do., light, \$6.50 to \$7.50; canners and cutters, \$4 to \$6; bulls, choice, heavy, \$8 to \$10; spring lambs, \$13.50 to \$13.75; calves, \$18 to \$19; do., medium, \$13 to \$15; hogs, fed and watered, \$21.25 to \$21.50; do., off cars, \$21.50 to \$21.75; do., f.o.b., \$20.25 to \$20.50; do., to farmer, \$20 to \$20.25; do., sows, \$5 off.

**Montreal.**  
Montreal, Oct. 8.—Cattle—Butcher steers, good, \$8 to \$11; medium, \$8 to \$9; common, \$7 to \$8; butcher heifer, choice, \$9 to \$10.50; medium, \$7.50 to \$9; common, \$5.50 to \$7; butchers cows, choice, \$7.50 to \$8.50; medium, \$5 to \$7.50; canners, \$3.50 to \$4; hogs, \$4 to \$5; butchers bulls, common, \$5.25 to \$6.50. Good veal, \$13 to \$15; medium, \$10 to \$13; grass, \$5.50 to \$6.50. Good lambs sold for \$12.50 to \$13 to local butchers. Packers are offering \$12.25 for very thin lambs down to \$8. Quotations: Ewes, \$5.50 to \$7; Hogs \$20.25 off cars; sows \$4 less than selects.

**East Buffalo.**  
East Buffalo, Oct. 8.—Cattle—Shipping steers, \$15 to \$17; butchers, \$9 to \$14; yearlings, \$5 to \$7; heifers, \$6 to \$11; cows, \$7.50 to \$10; bulls, \$5.50 to \$9.50; stockers and feeders, \$5.50 to \$8.50; fresh cows and springers, \$65 to \$130. Calves—\$6 to \$20. Hogs—Heavy, \$17.50 to \$17; mixed, \$16.75 to \$16.90; Yorkers, \$16.75; light do., \$15.50 to \$16; pigs, \$15.50; roughs, \$12.50; stags, \$8 to \$10. Sheep and lambs—Ewes 50c lower; lambs, \$7 to \$14.25; yearlings, \$6 to \$10; wethers, \$7.75 to \$8; ewes, \$3 to \$6.50; mixed sheep, \$7 to \$7.50.

**New York.**  
New York, Oct. 8.—Cattle—Steers, \$6.50 to \$15.75; bulls, \$5 to \$7.50; cows, \$2 to \$7. Calves—\$6 to \$20. Hogs—Heavy, \$17.50 to \$17; mixed, \$16.75 to \$16.90; Yorkers, \$16.75; light do., \$15.50 to \$16; pigs, \$15.50; roughs, \$12.50; stags, \$8 to \$10. Sheep and lambs—Ewes 50c lower; lambs, \$7 to \$14.25; yearlings, \$6 to \$10; wethers, \$7.75 to \$8; ewes, \$3 to \$6.50; mixed sheep, \$7 to \$7.50.

**Chicago.**  
Chicago, Oct. 8.—Cattle—Top, \$18.25; bulk dry fed, \$15.50 to \$17.90; common and medium steers slow steady; butcher cows draggy, \$5.25 to \$9; canners, \$3.75 to \$4.25; bologna bulls, \$5.75 to \$6.50; choice veals shade easier, \$16.73 to \$17.50; grassy kinds strong, \$6.50 to \$11; stockers and feeders steady; western \$14.25 upward, strong to 25c higher; common kinds, \$7.50 to \$9.25, slow, steady.

**GENERAL TRADE.**  
Butter.  
Belleville, 75c; Brantford, 65 to 67c; Cobourg, 63 to 67c; Chatham, 65 to 70c; Hamilton, 70c; Kitchener, 65c; Owen Sound, 63 to 66c; Port Hope, 58c; Sarnia, 70c; St. Thomas, 63 to 65c; and Woodstock, 65 to 70c per pound.

**Eggs.**  
Belleville, 64 to 65c; Brantford, 67 to 68c; Cobourg, 62 to 65c; Chatham, 66c; Hamilton, 70 to 75c; Kitchener, 65 to 68c; Owen Sound, 57 to 59c; Port Hope, 58c; Sarnia, 65c; St. Thomas, 63 to 65c; Woodstock, 62 to 68c per dozen.

**Chickens.**  
Belleville, 30 to 35c; Cobourg and Port Hope, 35c; Hamilton, 45 to 50c; Kitchener and St. Thomas, 35 to 38c; Owen Sound, 25 to 35c; Sarnia, 48c; and Woodstock, 30 to 40c per pound.

**Potatoes.**  
Belleville, \$1.50 to \$1.75; Brantford, \$2.25; Cobourg, \$2 to \$2.50; Chatham, \$2.25; Hamilton, \$2.50 to \$2.75; Kitchener, \$1.50 to \$1.80; Owen Sound, \$1.15 to \$1.25; St.

Thomas, \$2.25 to \$2.35; and Woodstock, \$1 to \$2 per bag.

**Wheat.**  
Belleville, Chatham and Port Hope, \$2.25; Brantford, \$2.35; Cobourg, \$2.15; Hamilton, \$2.40 to \$2.45; Kitchener, \$2.20 to \$2.25; Owen Sound, \$2.30 to \$2.35; St. Thomas, \$2.40 to \$2.50; and Woodstock, \$2.35 per bushel.

**Barley.**  
Belleville and Owen Sound, \$1.15 to \$1.20; Brantford and Port Hope, \$1.10; Cobourg, \$1; Chatham, \$1.08; Hamilton and Kitchener, \$1.30; St. Thomas, \$1.20 to \$1.25, and Woodstock, \$1.20 per bushel.

**Oats.**  
Belleville, 63 to 65c; Cobourg, 70 to 75c; Chatham and Sarnia, 60c; Hamilton, 72 to 75c; Kitchener, 59 to 61c; Owen Sound, 65 to 70c; Port Hope, 65c; St. Thomas, 70 to 80c, and Woodstock, 70c per bushel.

**Hay.**  
Belleville, baled \$25 to \$26, loose \$26 to \$27; Cobourg, baled \$27 to \$28, loose \$25 to \$27; Chatham, loose \$35; Hamilton, baled and loose \$32 to \$35; Kitchener, baled \$30 to \$32; loose \$28 to \$30; Owen Sound, baled \$21 to \$22, loose \$19 to \$20; Port Hope, baled \$24 to \$25, loose \$30; St. Thomas, baled \$30 to \$32, loose \$28 to \$30, and Woodstock, loose \$27 per ton.

## THE KINGSTON MARKET

Kingston, Oct. 8.

**Dairy Products.**  
Creamery butter, lb. 65 to 67  
Dairy butter, lb. 55 to 60  
Whip butter, lb. 55 to 60  
Butter, rolls, lb. 55  
Eggs, fresh, doz. 65  
Oleomargarine, lb. 36 to 45  
Cheese, lb. 35 to 40

**Poultry.**  
Chickens, dressed, lb. 38 to 45  
Hens, dressed, lb. 25 to 30

**Meats.**  
Beef:  
Porterhouse steak, lb. 40 to 45  
Round steak, lb. 30 to 35  
Rib roast, lb. 25 to 28  
Boiling cuts, lb. 15 to 20  
Western carcass, cwt. \$20 to 22  
Western hinds, cwt. \$23 to 27  
Pork:  
Loin roasts, lb. 30 to 35  
Rib roasts, lb. 20 to 25  
Pork chops, lb. 40 to 45  
Hogs, live weight, \$19 to 20  
Hogs, dressed, cwt. \$27 to 28  
Lamb:  
Fronts, lb. 25  
Hinds, lb. 30  
Legs, lb. 30  
Loin, lb. 35 to 40  
Chops, lb. 35 to 40  
Mutton, lb. 25

**Vegetables.**  
Beets, bunch 5  
Cabbage, head 5  
Celery, bunch 5 to 12 1/2  
Lettuce, bunch 5  
New potatoes, peck 20  
Carrots, bunch 5

**Fruit.**  
Bananas, doz. 30 to 50  
Grape fruit, doz. 12 to 15  
Lemons, doz. 30 to 40  
Oranges, doz. 65 to 75  
Peaches, basket 75 to 1.00  
Tomatoes, bus. 1.25

**Fish.**  
Cod, lb. 10 to 15  
Hels, lb. 10  
Pike, lb. 25  
Finnan haddie, lb. 15  
Haddock, fresh, lb. 12 1/2  
Halibut, lb. 35  
Herring, fresh, lb. 10 to 12 1/2  
Kippers, pair 18  
Perch, lb. 13 1/2  
Pike, lb. 12 1/2 to 16  
Rockfish, lb. 15  
Salmon, lb. 30 to 40  
Steak, cod, lb. 12 1/2 to 15  
Trout, salmon, lb. 20 to 22  
Whitefish, fresh, lb. 20 to 22

**Hides and Wool.**  
Beef Hides, No. 1 10c per lb.  
Lambs, No. 1 35c each  
Veals 12  
Kips 10  
Deacons 50c up to 90  
Sheep skins up to \$1.00  
Horse Hides, course, price per lb. up to \$6.00  
Tallow, No. 1 16 to 23  
Unwashed Wool, course, price per lb. 16 to 23  
Washed wapl, coarse, lb. 20 to 30  
Shearings 35

**Grain.**  
Barley, \$1.15  
Bran, ton 53.00  
Shorts, ton \$54 to \$58  
Buckwheat, bush. 1.25  
Hay, baled, ton \$25 to \$28  
Hay, loose, ton \$25  
Corn, yellow feed, 2.00  
bush. 6.75 to 7.00  
Oats, local 70  
Straw, baled, ton 12.00 to 12.00  
Straw, loose, ton 10.00  
Wheat, local 2.10 to 2.20

**A Slip of the Tongue.**  
Last winter, writes a contractor, there occurred in southern California a very amusing case of lapsus linguae.

At the Sunday morning service of a large down town church the pastor recognized among the congregation a well-known writer for the denomination weekly who had recently arrived from the east. At the close of the service the pastor mentioned the presence of this brother and invited him to come forward and say a few words of greeting. This the writer was pleased to do, and he began to relate the thrilling tale of blizzards, zero weather and snow that he had encountered on his trip.

Reaching a climax he said, "Only those who come, like myself, from the bitter cold of midwinter in the east, through the awful storms of the middle west, can really appreciate what a great privilege it is to be in this wonderful sin-cursed country of California."  
Not until the phrase was completed did he notice his shocking error, and then, red-faced and stammering, he repeated the last sentence, substituting the well-known word, "sun-kissed."  
Some men stay away from church because they are not interested in military displays.

## Storm Sash

Don't wait until January, give us your measurements now.

# Allan Lumber Co.

Phone 1042. : : : Victoria Street

## WHEAT PARTICIPATION CERTIFICATES

Leave your certificates with this Bank and we will collect for you the final payment which will probably be authorized by the Wheat Board about the end of October.

# THE CANADIAN BANK OF COMMERCE

PAID-UP CAPITAL : : \$15,000,000  
RESERVE FUND : : \$15,000,000  
KINGSTON BRANCH—R. T. Brymner, Manager.



## The Relation of a Bank to its Customer

"The Bank of Toronto is a business bank. We have been financing commercial operations, developing and advising as to business policies, and facilitating the legitimate growth of Canadian business for 65 years."

"Our services to business men are intimate and personal. We have not grown away from a knowledge of the individual needs of every customer."

Bank of Toronto information and experience may be helpful. Consult us.

# THE BANK OF TORONTO

Capital \$5,000,000 Reserve \$5,750,000  
Safety Deposit Boxes to Rent

## Capitalize This Asset

Time flies like the Weaver's shuttle. The boys and girls of to-day are the men and women of to-morrow. No doubt you have often pondered how best to systematically save a little each year, in order to ensure a college education for a son or marriage dowry for a daughter. Our Child's Endowment is what you want. It can be written on a child at any age. Let us tell you more about it.

# The Manufacturers Life Insurance Company

HEAD OFFICE - TORONTO, CANADA  
M. G. JOHNSTONE, Branch Manager Kingston.

Please fill in and forward to the above address.

Without obligation, please furnish me with particulars of your Endowment Policy for a child \_\_\_\_\_ years of age. I would like to see \_\_\_\_\_ policy.

Name \_\_\_\_\_ Address \_\_\_\_\_

# DE LAVAL ALPHA

THE EASIEST GAS ENGINE TO OPERATE AND CARE FOR

The farmer wants an engine that is simple and reliable, that will do what he wants it to do without constant tinkering and adjustment.

He gets such an engine when he buys an Alpha. The Alpha is a thoroughly practical engine. It is designed and built to do its work day in and day out under the varying conditions it is called to meet on the farm. It is dependable at all times.

One big feature of the Alpha is its low fuel consumption, whether you are using gasoline, alcohol or kerosene, the Alpha is a fuel saver.

DE LAVAL SEPARATORS

# F. M. CLOW

471 Princess Street Phone 1015w.

## HORSE SENSE in horse feeding.

It is shrewd common sense to feed a horse a balanced food, which will develop every part of its body. Analysis of Purina O-Molene Feed shows that it contains in proper proportion all the elements for muscle, blood, hair and hide making, as well as a large percentage of Nitrogen free extract, which supplies heat and energy. There is no loss to 15 to 18 percent waste as in feeding the whole oats, due to swallowing whole.

Purina O-Molene Feed is highly digestible.

Wholesale and Retail Distributors,  

# W. P. PETERS

Wholesale ..... Foot of Princess Street  
Retail ..... 117 Brock Street