

Velie Model 48

By all means see the new VELIE SIX. Ride in it, or, better yet, drive it. We are well satisfied to abide by your decision. Comparisons with other cars similarly priced can only better testify in favor of the VELIE SIX.

KENDRICK & VANLUVEN

(Local Distributors)
Phones 1888 and 81.
EXPERT SERVICE AT 378 BROOK STREET.



Champion Heavy Duty JAS-43, 3/4-in. Price \$2.00
For use in heavy service motor cars, trucks, tractors and engines

"3450" Insulators Resist Knocks, Shocks, Heat and Expansion to a Wonderful Degree

They are so hard and tough that they stand up under treatment that is never experienced even in emergency use in a motor or engine.

You can heat them white hot, then douse them in water—knock them with a wrench—drive them through a cake of lead—drop them on the floor—and you won't find even a chip or crack in the glaze.



Dependable Spark Plugs

all have "3450" insulators.

Any dealer in motor supplies can supply you with the correct plug for your engine—insist that "Champion" appear on the insulator as well as on the box.

Champion Spark Plug Co. of Canada, Limited
Windsor, Ontario

Largest Factory in Canada making Spark Plugs exclusively

In the Automobile World

AUTO TALK

Good-Bye To Horses.
The Pennsylvania state constabulary are coming off their horses and will hereafter police the state on motorcycles. This became known when a contract was recently awarded to a motorcycle manufacturer for 70 of his latest model machines.

To Repair Radiator
In case of a leak in a honeycomb radiator, get a bolt longer than the depth of the radiator and fine enough to go through the hole in the honeycomb. Put it where the leak is, place a rubber washer on each end and a steel washer over these, and then tighten the nut on the bolt tight enough to stop the leak.

Test Is Strict.
Fully 25 per cent of those applying for licenses as automobile operators in New York are being rejected by the examiners. The examination is considered one of the strictest in the States.

Keep Clips Tight
If any of your springs give way at the centre bolt hole, it is because the spring clips were not tight. Dealers and manufacturers will not replace springs broken at this point for this reason. The safe way is to draw the nuts up as close as possible with a wrench big enough to make certain of their being tight. The clips should be watched and tightened often.

Overloads Are Fined.
New Jersey motorists have gained a point against the overloaded truck that is an extra burden on the roads. The highway commission has decided to place a fine on all trucks passing through the state overloaded. Seals will be ready on the different highways and when a passing truck is believed to be carrying more weight than allowed by license, it will be weighed. If overweighted, a fine will be imposed.

Getting Out of Rut.
When a rear wheel is in a mud-hole so that it spins, apply the emergency brake gently. This will give enough resistance to the spinning wheel to let the other wheel pull the car out. The decrease in engine speed because of the brake pressure can be made up by opening the throttle a little.

Appropriate Memorial
A Roosevelt road, lined with memorial trees, is the latest plan for the perpetuation of the former president's memory. It has been proposed by Charles L. Pack, president of the American Forestry Association, who has also sought the co-operation of automobile associations.

"The Ladies"
"The incentive behind the sales of 90 per cent of the automobiles is a woman. This is my firm conviction after years of observation of sales psychology in this field," says a spokesman of an Ottawa automobile dealer. "Europeans say that American men pamper their women, and to a certain extent this is true. The husband who buys a car may buy from motives of personal pride, yet back in his mind is the knowledge that his wife will derive pleasure from it. This close contact with everyday life is what makes automobile selling a real pleasure to the men in it. They know that every man who comes in to buy and does so, though he may not reveal his real motives, is a woman in judgment, by a woman who is dear to him."

A Prediction.
"Long years hence, when the historian sits down to write about the years between 1900 and 1920, will the Great War occupy most of his space? No. It was by no means the most important thing. He will write about the triumph of the gas engine applied to vehicles."—Colliers.

A Use For Movies
Slow motion pictures of the type that have amused movie devotees by slowing down swiftly-moving bodies to the point where every action may be analyzed, have been utilized by the United States Tire Company for a scientific study of just what happens when a heavily loaded motor truck climbs a curb, drops off an elevation or bumps over a railroad track.

Keep Heads Tight.
The holding-down nuts of the cylinder head should be tightened periodically. If the gaskets are taken off for any reason, in replacing the part should be tightened up again by screwing down opposite nuts. Each nut should be turned a little; then its opposite should be screwed down somewhat and so on, working around the cylinder head. If one nut is tightened all the way, there is danger of springing the part.

Closed Car Argument
After analyzing the weather reports, a Detroit automobile salesman states that the averages over a period of years show that 129 days in every 12 months are lost to the owner of the average open motor car because rain and snow make driving inconvenient. Naturally he puts this forward as one of the arguments brought out in favor of the general adoption of closed cars and particularly sedans for all-year round use.

Behind the Scenes.
The average car owner may only be interested in the fact that his car does run, but those who make a further study of the modern automobile find it a fascinating subject, and one of the most interesting phases is the testing laboratory which some of the bigger manufacturers maintain. In addition to the laboratory, the microscope is used a great deal for determining whether the high duty parts of the car have been properly heat treated. By examining a section of a piece of steel under the microscope, it is possible to determine how the part will stand up in service, or whether the crystalline structure of the steel is such that there is a likelihood

of trouble. The microscope is used in such laboratory is so arranged with various eye pieces and lenses that magnifications ranging from 32 times to 1,000 times may be obtained.

Good Advice
"Every motorist should set aside a regular time for looking over his car, and once a week is not too frequent," says a local dealer. While the fool-proof design and sturdy construction of the modern car permits of a lot of neglect, there is a limit to all good things and generally it is costly. The motorist should regard his car as an investment, and take care of it as he does other things he owns, and not let it take care of itself and run down at the heels, so to speak. That this practice is becoming more a habit with owners is shown by the falling off in calls for service in relation to the number of cars in commission."

A Good Stunt.
The Lexington Motor Car Co. has worked out a unique plan for showing visitors through its factory. An elevated runway, or bridge, is being constructed 15 feet above the working floor, for the use of visitors making tours of the plant. In addition to doing away with distracting the attention of the workmen, it also will eliminate the risk of injury to visitors.

Big Cole Shipment
One of the largest shipments of cars ever made by an Indianapolis manufacturer to any foreign distributor took place the week of May 3. It comprised 25 carloads of Aero eights, and was sent to the Cole distributors in London, England, William Cole and Sons, Ltd., 235 Hammersmith road. Through a curious coincidence, the dealer's name is the same as that of the car. William Cole and Sons were carriage builders in the early Victorian days. They have now turned to the more modern field of selling motor cars, numbering among their clients many of England's notables.

Pointer on Batteries
There are two safe rules in the purchase of a storage battery, according to the local electric field of selling motor cars, numbering among their clients many of England's notables.

Circus Featured Auto.
In 1898 a circus was announcing the exhibit of a "horseless carriage" under the "big top." Today, the world's largest circuses are using an automobile as one of its foremost attractions. The car, an Essex finished in silver and white, is used to convey the stars of the sawdust circle into the arena. As its appearance is after an act filled with hair-raising circus stunts, it serves to emphasize the dignity, comfort and beauty of the automobile and provides a graphic illustration of the giant strides made by this industry in the past two decades.

WILL HYPHENATE LICENSE NUMBER
The contract for the motor vehicle license makers for 1921 has been let by the Hon. P. C. Biggs, Minister of Public Work and Highways. The numbers will be hyphenated in groups of two—for instance, 18-82-73. The Canadian-born Secretary of State for New York State, Hon. Francis M. Hugo, originated this plate hyphenation scheme. It was found, after exhaustive test, that numbers so broken in to groups of two were much more readily and accurately seen and remembered.

A new broom is good for three days.—Italian Proverb.
If the cap fits you, wear it.

Truck Cushions

These Cushions are made of heavy Pantasote. Springs 4 1/2" high and the most easy riding and durable Cushion made. Send the size of your seat and we will make it to fit.

Price: \$8.00
JUDSON'S Auto Tops
Brockville - Ont.

Huge Gasoline Consumption

American automobile manufacturers are preparing to put 2,675,000 cars, including 425,000 commercial cars on the market this year, allowing for 20 per cent. replacements, this would make the number in use in 1920 about 8,675,000. The average car consumes about 500 gallons, or 12.3 barrels, of gasoline a year. This would mean that during 1920 at least 100,000,000 barrels of gasoline must be produced by refiners for domestic consumption. Add to this 10,000,000 barrels which will be needed for exports, tractors, and other uses, and a total of 110,000,000 barrels will be needed. This is an increase of 17,000,000 barrels over 1919. Exports were about 8,900,000 barrels last year, or about nine per cent. of the total.

Stocks of gasoline on hand September 30, 1919, were 8,300,000 barrels, a gain of 2,400,000 barrels over those of December 31, 1918. The number of motor cars registered in 1900 was 10,000 compared with 6,146,000 in 1918. In 1914 there were 1,700,000 cars and a gasoline production of 92,700,000 barrels, a gain of 341 per cent, and 166 per cent, respectively. Lubricating oil production will be in proportionately increased demand. In 1919, 19,685,667 barrels were manufactured and about 12,369,414 barrels were consumed in the United States. In 1918 output was 20,000,000 barrels with a consumption of 19,748,331. Exports were proportionately higher, being about 6,667,000 barrels last year.

Activity of refining companies and producing companies in enlarging output indicates that they are preparing to take care of increased demand. Advances in the price of retail and wholesale gasoline and lubricating oil are expected to take place through out the country.

MOTOR EXPRESSES IN MANY STATES.
Motorized express companies at the beginning of this year totaled 1,956, and the average round trip per company was 121 miles. New York has 268 such lines, the largest number of any State. Pennsylvania is second with 267. Such lines are in operation in 42 States. It is difficult to determine the amount of freight which makes up the annual haulage of these lines, estimates varying quite largely, but it is evident that it must be of large proportions. This, of course, is exclusive of trucks operated by manufacturing companies themselves.

A Little Child.
Asked to write an essay on "How Children May Help to Avoid Motor Accidents," Beulah Garland, 11-year-old school girl, of Cobourg, Ont., wrote the following, which is well worth the consideration of older folk:

1. Thou shalt not play upon the street.
2. Thou shalt not cross the street, only at crossings, as there thou hast the right of way.
3. Thou shalt look before crossing the street.
4. Remember, after getting out of a car, thou shalt not cross the street behind a car.
5. Thou shalt not get in or out of a car when it is moving.
6. Thou shalt not interfere with cars, as thou mayst put them out of order and cause accidents.
7. Thou shalt not drop hats, glass or pins upon the road and cause motorists to have blowouts and perhaps accidents.
8. Thou shalt not fight matches near gasoline.
9. Thou shalt keep the motor rules when riding on a bicycle.
10. Thou shalt help old people across the street.

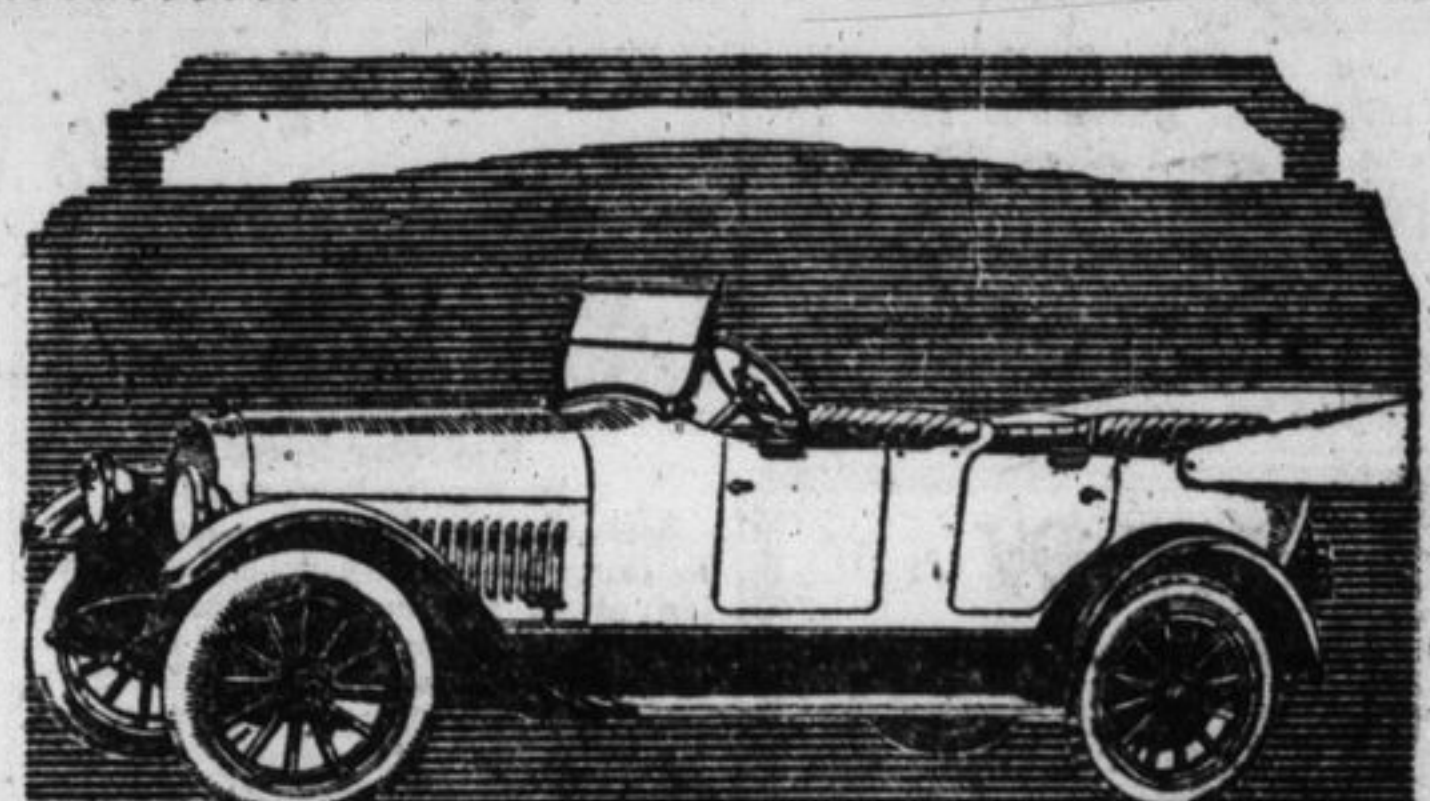
Robinson & Wiltshire
Automobile Repair Shop
All Kinds of Cars Repaired Promptly.
Also do Motor Boat Repairing
405 Princess St.

We can make almost immediately delivery of any of the McLaughlin models, and would invite you to telephone for a demonstration of the famous and best Canadian product in Motor Cars.

The following reliable used cars can be seen at our garage on the corner of Queen and Bagot streets at any time of the day or night and for quick buyers we have the best bargains in Kingston.



Give miles and miles of pleasant riding, and lend dignity to the appearance of your car. Absolutely dependable and the most durable. Your dealer or garage will equip your car with V. D. L. tires and tubes. Every size a Superize. VAN DER LINDE RUBBER CO. Limited TORONTO CANADA



Studebaker
SERIES 20 SPECIAL-SIX
Women drivers can handle the SPECIAL-SIX with ease because of the elimination of frequent gear shifting, the accessibility of all control devices and the way the car holds to the road.

Ask us what gasoline and tire mileage SPECIAL-SIX owners are getting.
50 H.P. detachable hood motor; 119-inch wheelbase gives maximum comfort for five passengers. All Studebaker cars are equipped with Cord Tires—another Studebaker precedent.
"This is a Studebaker Year"
\$1875
KINGSTON AUTO SALES CO., LTD.
Corner Brock and Montreal Streets.

Phone 1988
Tires SPECIALS Tubes
We have some exceptional values in 30x3 1/2 Red Tubes, as well as in 30x3 1/2 Casings.
We do all kinds of Vulcanizing and Repairing on Tires and Tubes.
We can give you Service on your hard rubber Truck Tires.
SUDDABY'S TIRE SERVICE
CORNER QUEEN AND WELLINGTON STREETS

We can make almost immediately delivery of any of the McLaughlin models, and would invite you to telephone for a demonstration of the famous and best Canadian product in Motor Cars.

The following reliable used cars can be seen at our garage on the corner of Queen and Bagot streets at any time of the day or night and for quick buyers we have the best bargains in Kingston.

Ford Roadster	McLaughlin D45.
Ford Touring.	McLaughlin E63.
Chevrolet 490, 1918.	McLaughlin E35.
Chevrolet 490, 1919.	Two McLaughlin Roadsters.

Blue Garages, Limited
Phone 567. H. M. FAIR, Manager.