



Mayme Gehrue and a few of the stunning bathing costumes worn in John Cort's sensational musical comedy, "Listen Lester," at the Grand Opera House, Thursday, March 18th.

Markets Reports

GRAIN QUOTATIONS

Toronto, March 16.—Manitoba Wheat—No. 1 Northern, \$2.80; No. 2, \$2.77; No. 3, \$2.73; in store, Fort William.

Manitoba Oats—No. 2, C.W., 99c; No. 3, C.W., 96c; No. 1 feed, 95c; No. 2, feed, 93c; extra No. 1 feed, 96c; Fort William, in store.

American Corn—No. 3 yellow, nominal, \$1.94; No. 4, nominal, \$1.91; track, Toronto, prompt shipment.

Canadian Corn—Feed, nominal.

Manitoba Barley, in store, Fort William—No. 3, C.W., \$1.73; No. 4, C.D., \$1.54; rejects, \$1.40; feed, \$1.40.

Ontario Wheat—No. 1, \$2 to \$2.01; No. 2, \$1.98 to \$2.01; L.O.B. shipping points, according to freight; No. 3, \$1.92 to \$1.82; No. 1 Spring, \$2.02 to \$2.03; No. 2, \$1.98 to \$2.01; No. 3, \$1.95 to \$2.01.

Ontario Oats—No. 3, \$1 to \$1.02; Barley—Malt, \$1.80 to \$1.82; Buckwheat—\$1.65 to \$1.70.

Eye—No. 3, \$1.85 to \$1.88.

Peas—No. 2, \$3, according to freight outside.

Ontario Flour—Government standard, Montreal, in jute bags, \$10.80 to \$11; Toronto, \$11.

LIVE STOCK MARKETS.

Toronto, March 16.—Heavy steers, choice, \$12.25 to \$12.50; choice butcher, \$12 to \$12.50; medium butcher, \$10.50 to \$11; common butcher, \$8 to \$9.50; light, common, \$6.50 to \$7; heifers, good to choice, \$11 to \$11.50; butcher cows, choice, \$10 to \$11; bulls, choice, heavy, \$19 to \$22.50; do., good, \$9 to \$9.75; do., light, \$7 to \$8; canners and cutters, \$5.25 to \$6.50; stockers, 800 to 900 lbs., \$9 to \$10; feeders, 950 to 1,000 lbs., \$10 to \$11; spring lambs, \$20 to \$21; sheep, \$13 to \$14; heavy sheep and bucks, \$7 to \$8; calves, \$19 to \$22.50; do., medium, \$18 to \$19; hogs, fed and watered, \$19.50 to \$19.75; do., off cars, \$19.75 to \$20; do., f.o.b., \$18.80 to \$18.75; do., to the farmer, \$18.25 to \$18.50.

Chicago, March 16.—Hogs—Bulk, \$14.10 to \$15.00; top, \$15.00; heavy, \$13.75 to \$14.85; medium, \$14.50 to \$14.75; light, \$13.25 to \$15.50; light lights, \$14.25 to \$16.75; 500 heavy packing sows, smooth, \$14.00 to \$13.15; packing sows, rough, \$12.00 to \$12.60; pigs, \$13 to \$14.50. Cattle—17,000 head; market weak; beef steers, medium and heavy weight, choice and prime, \$13.50 to \$15.50; medium and good, \$12.50 to \$13.50; common, \$9.75 to \$11.50; light, good and choice, \$12.25; butcher cattle, heifers, \$7.25 to \$13.25; cows, \$7.10 to \$12.25; canners and cutters, \$4.90 to \$7.00; veal calves, \$15.00 to \$17.00; feeder steers, \$8.75 to \$12.00; stocker steers, \$7.50 to \$11. Lamb, \$4 lbs. down, \$17.00 to \$19.25; culls and common, \$14.00 to \$16.75; ewes, medium, good and choice, \$11.00 to \$14.25; culls and common, \$6.00 to \$10.75.

NEW YORK, March 16.—Bees, steers, \$9 to \$12.35; no real prime offered; culls, \$7 to \$10.50; cows, \$8.75 to \$10; calves, veals, \$17 to \$24; culls, \$12 to \$16; little calves, \$12 to \$14; baryards, \$8 to \$10; yearlings, \$5 to \$7; sheep, ewes, \$8 to \$12; culls, \$5 to \$7; lambs, \$17 to \$20.50; culls, \$14 to \$16; hogs, market firm at \$15.75 to \$16.75; pigs, \$15 to \$15.50; rough, \$13.50.

Buffalo, March 16.—Cattle—Receipts, 3,000 head; heavy, market slow and 25c to 50c lower; shipping steers, \$13 to \$14.50; butchers, \$9 to \$13; yearlings, \$12.50 to \$14; bulls, \$7 to \$10.50; stockers and feeders, \$6 to \$10; fresh cows and springers, \$7 to \$17.50.

Calves—Receipts, 2,100 head; market 50c higher at \$6 to \$23.50.

Hogs—Receipts, 12,800 head; market slow and 5c to 25c lower; heavy, 115 to \$16.10; mixed, \$16.60 to \$16.75; Yorkers, \$16.75 to \$16.85; light do., \$16.50 to \$16.75; pigs, \$15 to \$16.50; roughs, \$13 to \$13.50; stags, \$8 to \$10.

Sheep and Lambs—Receipts, 7,000 head; market steady; lambs, \$13 to \$20.50; yearlings, \$12 to \$18.50; wethers, \$15.50 to \$16; ewes, \$6 to \$14.50; mixed sheep, \$14.50 to \$15.

NOTICE RE TIRES

All persons who have placed their orders for Tires with us are hereby notified that they may get these at any time between March 15th and May 1st.

Tires have advanced 20 per cent. and a greater advance of 25 per cent. is predicted. Let us take your order now for future delivery, and we can save you dollars such as before.

We are also prepared to take orders for high-grade Polarine Oils at old prices, thus saving you 35 per cent. of present prices.

VanLuvenBros.

Phone 1609

Your RIGHT Arm of Power the LONDON ENGINE

An Engine You'll be Glad You Bought!

HERE is an engine sincerely built for service—perfected in design and workmanship—of A.I. materials and unconditionally guaranteed.

The "LONDON" has no tank, no fan—it is a water-cooled engine that is frostproof. Speed may be changed while running. No packed joints. Governor cut-out to save battery. Drivers fall rated load and has power to spare. Vertical type, as used in high grade autos, proven best design. All parts standard and interchangeable. Let us send you the complete facts.

Write for gasoline engine guide
LONDON GAS POWER CO., LTD.
15 York Street, London, Canada



Former German Colony Mandates, London, March 17.—Premier Lloyd George, in the House of Commons, announced that the following mandates had been allocated: German East Africa to Great Britain and Belgium; German Southwest Africa to the Union of South Africa; German possessions in the Pacific Ocean south of the equator, other than Samoa, to the Commonwealth of Australia; Samoa to New Zealand; and the German islands north of the equator to Japan.

GRAND TRUNK RAILWAY SYSTEM

AGENCY FOR ALL STEAMSHIP LINES

For information and rates apply to J. P. Hanley, C. P. & T. A., G. T. Ry., Kingston, Ont.

CP TO OS EUROPE

From West St. John To
Mar. 15—Miramichi, Liverp
Mar. 22—Montreal, Liverp
Mar. 29—Coralton, Liverp
Mar. 30—Sullivan, Antwerp
Mar. 31—Sullivan, Liverp
Apr. 3—Sullivan, Liverp
Apr. 7—Coralton
April 10—Emp. of France
Liverpool

Steamers sail on arrival of C.P.R. trains leaving Montreal 12:10 p.m. and 7 p.m. day previous.

Apply to local agents or: **CANADIAN PACIFIC OCEAN SERVICES**, 1 King Street, East, Toronto

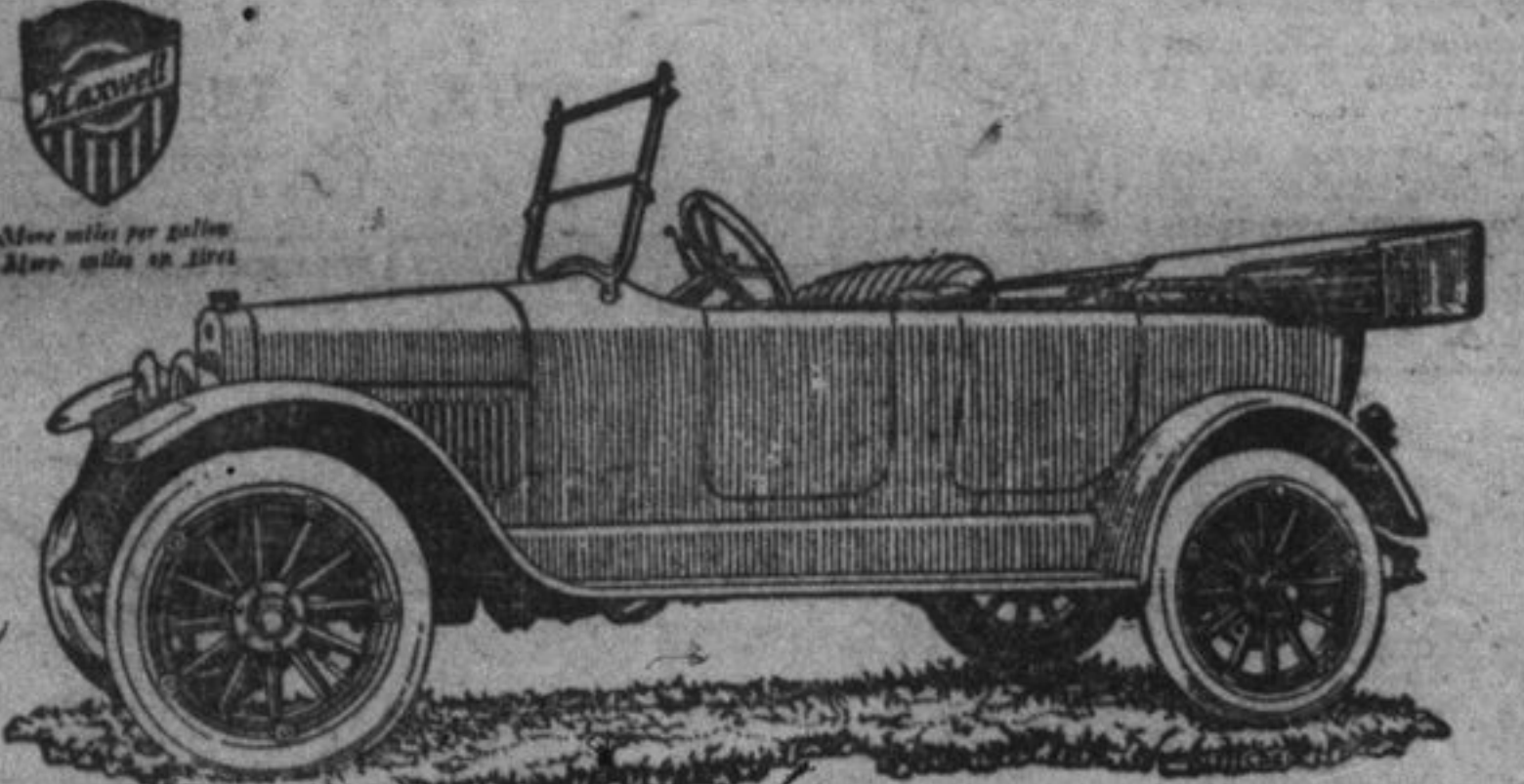
Cook's Cotton Root Compound

A safe, reliable, regulating medicine, sold in three degrees of strength—No. 1, \$1.00; No. 2, \$1.50; No. 3, \$2.00 per bottle. Sold by all druggists, or sent by mail on receipt of price. Free pamphlet. Address: **THE COOK MEDICINE CO., TORONTO, ONT.** (Family Medicine)

"Say—It With Flowers"

BROCK STREET FLOWER SHOP

Under new management
Give us a call.



MAXWELL Has Won Its Following Through Its Quality

THE metals used in the Maxwell chassis compare favorably pound for pound with those in the best cars that the world has produced, according to metallurgists.

There is a real reason for this quality in a Maxwell.

The fundamental purpose of the Maxwell is to carry the same passenger load over the same roads and at the same speeds as larger and more expensive cars.

But it must perform this mission in an extremely economical way.

Therefore the Maxwell has to be light. But to make it strong as well as light only the very best of materials can be employed.

Hence, the quality metals.

And it is through the quality of its metals that Maxwell has developed its following.

This is a following that began five years ago with a foundation of 5,000 and now reaches a mark of 100,000 new Maxwell enthusiasts in 1920.

300,000 Maxwells now on the highways of two continents are a daily endorsement of the merit of this great car.

MAXWELL MOTOR CO., of Canada, Limited, Windsor, Ont.

M. Oberndorffer
124 Clarence Street, KINGSTON

GENERAL TRADE

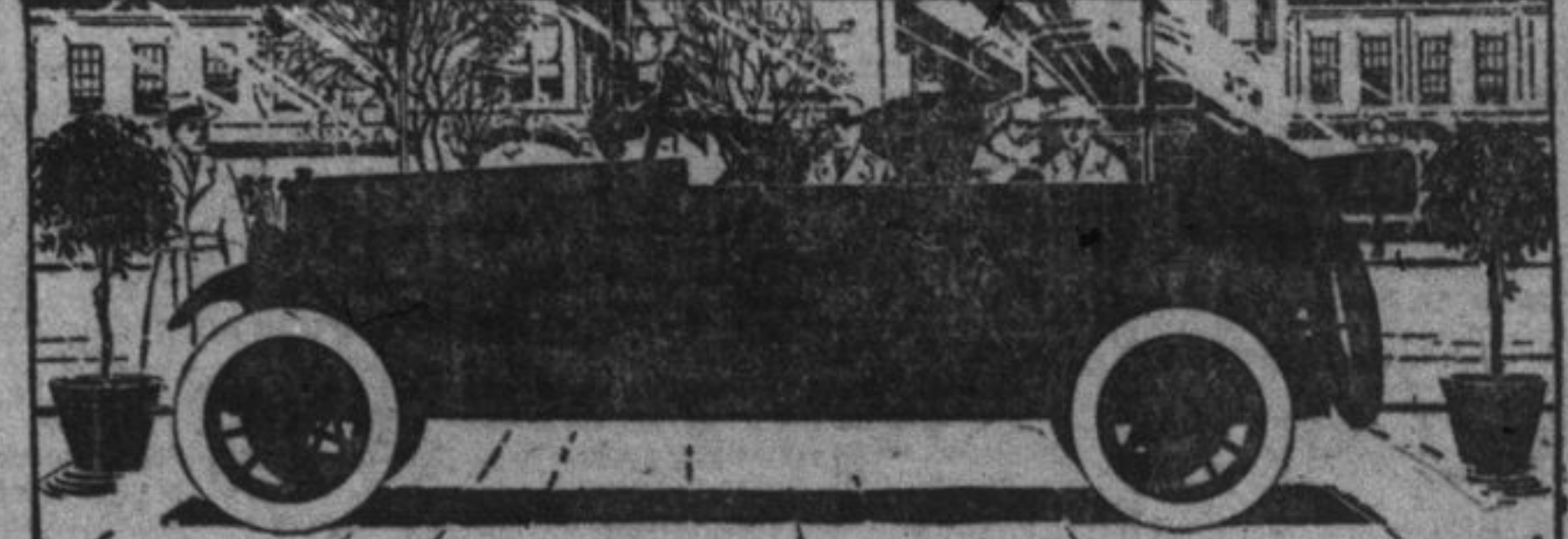
Montreal, March 16.—Cheese, finest easterns, 26 1/2 to 27c. Butter, choicest creamery, 65 to 66c; seconds, 62 to 64c; eggs, fresh, selected, 54c; Potatoes, per bag, car lots, \$3.50 to \$3.55. Lard, pure, wood-pails, 20 lbs net, 31 to 31 1/2c.

Toronto, March 16.—Butter, choice dairy, 62 to 68c; do., creamery, 70 to 80c; margarine, lb, 37 to 40c; eggs, new laid, doz, 70 to 80c; cheese, lb, 35 to 40c; Fowl, lb., 40 to 45c; chickens, roasting, 40 to 48; turkeys, lb., 55 to 60; apples, bkt, 50 to \$1; do., bbl., \$5 to \$8; cranberries, 2 quarts, 25c; oranges, doz., 50 to 61; lemons, doz., 25 to 35; grapefruit, each, 5 to 10c; rhubarb, bunch, 10 to 15c; beets, bag, \$2.25 to \$2.50; carrots, bag, \$2 to \$2.25; cabbage, each, 15 to 40c; cauliflower, each, 25 to 50c; celery, head, 10 to 25c; leeks, bunch, 10 to 30c; lettuce leaf, 3 for 10; lettuce, medium and good, 10 to 15c; onions, bkt., 55 to \$1.25; do., green, bch, 5 to 10c; peppers, doz, 50 to 75c; potatoes, bag, \$4.50 to \$4.75; parsley, bunch 10c; parsnips, bag, \$2.50 to \$2.75; turnips, bag, \$1.25.

New York, March 16.—Butter barely steady; receipts, 2,488 tubs; creamery, higher than extras, 63 to 64 1/2c; extra (92 score), 67 to 67 1/2c; firsts, 58 to 61c; packing stock, current make, No. 2, 29 to 33 1/2c. Eggs firmer; receipts, 14,049 cases. Eggs firmer; receipts, 049 cases. Fresh gathered, extra first, 46c; do., first, 44 1/2 to 45c; State, Pennsylvania and nearby western hennessy, white, first to extra, 50 to 54c; do., brown, extra, 49 to 50c; do., gathered brown, extra, 49 to 50c; do., gathered, brown and mixed colors, first to extra, 45 to 48c. Cheese firm; receipts, 2,950 boxes. State, whole milk flags, held specials, 23 1/2 to 24c; do., average run, 23 to 24c; State, whole milk twins, held specials, 29 to 30c; do., average run, 27 1/2 to 28 1/2c.

What May Happen.
Winnipeg, March 17.—An early spring is likely to precipitate a serious shortage in farm machinery and tillage implements generally, dealers declare. The demand is active now and is likely to be abnormally large by the time spring opens up. Farm implement factories both in Canada and the United States have been held up in their production through shortage of materials and difficulty of obtaining delivery. As a result goods which have been ordered months ago by local firms have not been delivered yet.

CHANDLER SIX Famous For Its Marvelous Motor



Chandler Leads Because of Its Real Worth

IT is easy to boast and make claims and to so magnify mere incidents that they may appear as mighty events. It is easy to paint in the colors of exaggeration.

Chandler advertising has never carried boasts or unfounded assertions to the public. It has never extolled some single performance as final evidence of superiority.

The Chandler Six is so distinctly the leader among medium-priced high-grade cars because of its own worthiness, which for sales purposes does not need the support of exaggeration.

Chandler worthiness comes primarily, of course, from its great chassis, light, strong and enduring, featured by the famous Chandler motor developed throughout seven years of constant manufacture with no change of type of design, but with refinements and developments which have kept it long strides ahead of any other six.

This isn't a claim. It's a fact, and over sixty thousand Chandler owners would tell you so if you could ask them.

Six handsome bodies, splendidly built and finished, are mounted on the one standard Chandler chassis.

Other cars of some similarity are listed at hundreds of dollars more

SIX HANDSOME BODY TYPES

Seven-Passenger Touring Car, \$3,500 Four-Passenger Roadster \$3,500
Four-Passenger Dispatch Car, \$3,000

Seven-Passenger Sedan, \$5,000 Four-Passenger Coupe, \$4,950
Limousine, \$5,750

All prices f.o.b. Kingston and include Spare Tire, Dumper and Chains

H. F. LEBERT

Local Distributor 207 PRINCESS STREET
CHANDLER MOTOR CAR COMPANY, CLEVELAND, OHIO