



The Canadian Pacific Railway has had a closer and more intimate connection with the progress of the Dominion of Canada than perhaps any other single agency except the federal government. One of the fundamental conditions of Confederation was, in fact, the construction of a transcontinental railway to link up the new provinces with the old; this condition was achieved with the completion of the main line of the Canadian Pacific in 1885. Since that time the railway has developed proportionately with the Dominion of Canada, so that it is now not only one of the most important industrial organizations in the British Empire, but also the greatest transportation system in the world.

In railway operation alone, the Canadian Pacific owns or controls over 18,600 miles of track, serving all the important cities of Canada and many, with direct communication, in the United States. The chief industrial, commercial and agricultural sections of Canada are situated along its system, with 2,400 stations.

Branch lines radiate in all directions, providing the most direct route to all points. Fourteen and a half million passengers used the Canadian Pacific last year. Most of the Canadian Pacific rolling stock (cars and locomotives) is manufactured in Canada in its own shops, providing employment for thousands of workmen. All its sleeping, parlor, dining and other services are operated by the company itself.

There is no other organization which links and serves all parts of Canada as does the Canadian Pacific. By its system the Atlantic Ocean meets the Pacific, the Maritime Provinces encounter British Columbia in everyday commerce, the busy manufacturing centres of Ontario and Quebec exchange their products for the foodstuffs of the rich prairies.

Along the line of the Canadian Pacific is found the most beautiful scenery in Canada. For example, the Canadian Pacific Rockies, which have been compared to "fifty or sixty Switzerlands rolled into one," are reached only by this line, and then there are the numerous and highly popular Quebec, Ontario, and the Atlantic Coast pleasure resorts. Vancouver and Victoria on the Pacific Coast are equally delightful. No holiday should be planned without the Canadian Pacific.

The passenger service of the Canadian Pacific is famous as amongst the best of the world. Its features are speed, safety and the fullest possible luxuries of travel. The main line is served by three transcontinental trains a day in each direction, one of which, the Trans-Canada Limited, is the fastest transcontinental train of this continent (Montreal to Vancouver in 93 hours, Toronto to Vancouver in 89 hours).

The Canadian Pacific provides a fast and highly efficient freight service for the commercial needs of the country, with excellent terminal facilities at all important points. It has 87,500 freight cars which are continuously in motion carrying Canadian products from one end of the country to the other or to seaports for export. For example, an average of fifty-nine per cent. of Canada's vast grain crop is every year carried in Canadian Pacific freight cars.

Canadian Pacific steamers on the Great Lakes, from St. John to Digby, N.S., from Vancouver to Victoria and other Vancouver Island points, from Vancouver to Alaska, and on the inland British Columbia Lakes, supplement rail services.

The Canadian Pacific Telegraph system reaches from Atlantic to Pacific, with its own lines into every important point in Canada. This is the ideal route for commercial and private business, with quick connections with the United States and cable connections with Europe, Africa, Australia, New Zealand, China, Japan, the West Indies, etc.

The fleets of the Canadian Pacific Ocean Services provide fast passenger and freight services from Canadian ports to Liverpool, Glasgow, London, Bristol, and Antwerp, and to Japan, China, the Philippines, Hong Kong, and Singapore. The steamers of the Canadian-Australian line ply from Vancouver to Hawaii, Fiji, New Zealand and Australia.

The Canadian Pacific has for many years conducted a widespread campaign for the settlement and development of Canada, and has attracted highly desirable immigrants from Great Britain, the continent of Europe, the United States, etc. It has for sale large acres of choice agricultural farm lands in Manitoba, Saskatchewan and Alberta, and to actual settlers who will occupy and improve the land, it sells on generous terms with payments extending over twenty years.

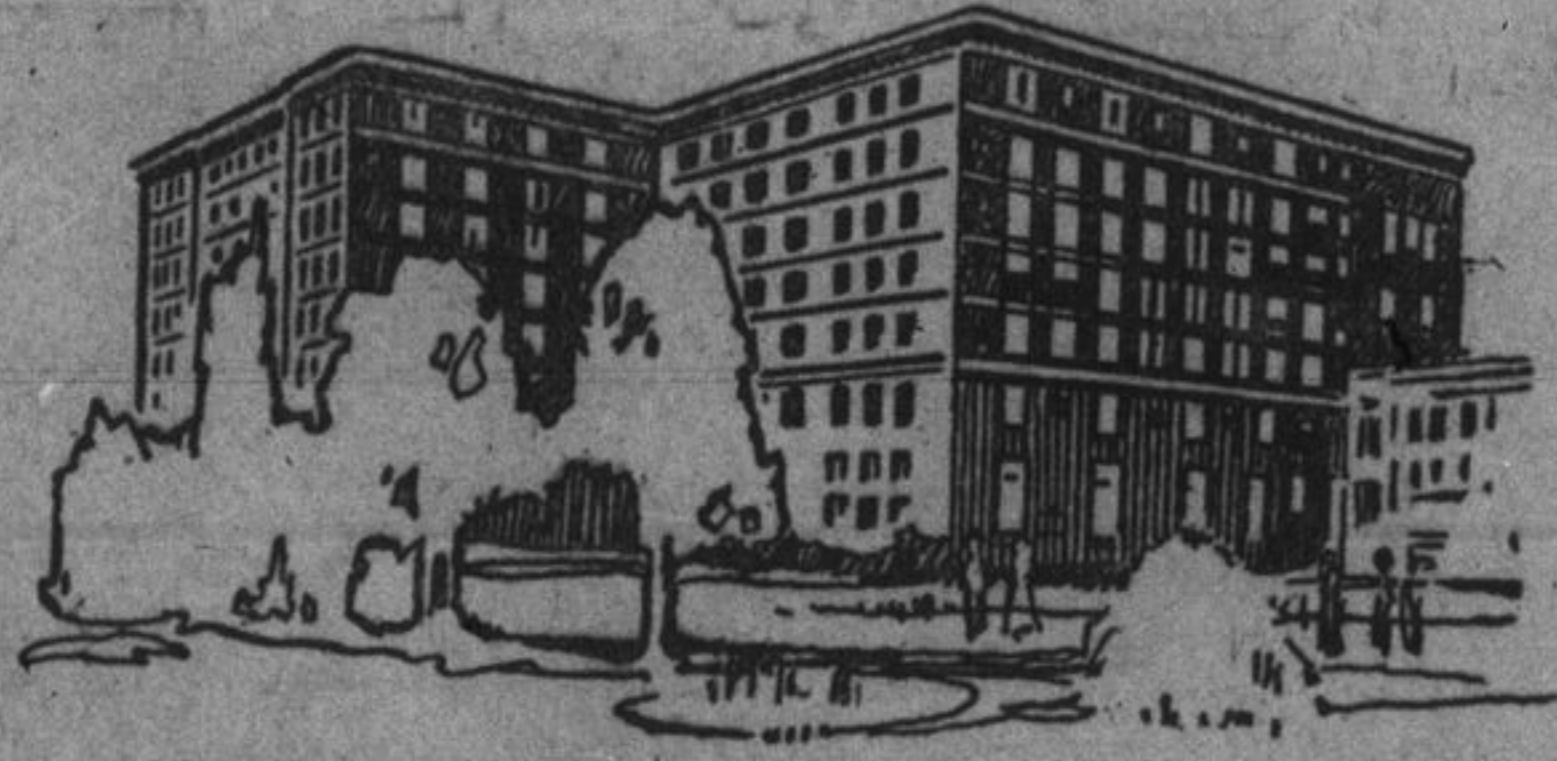
The Dominion Express Company, operating on all lines of the Canadian Pacific Railway, Canadian Pacific Ocean Services, and other railway and steamship services, forwards merchandise, money, valuables, etc., to all parts of the world, promptly, carefully and at reasonable rates. Money orders, foreign cheques and travellers cheques issued.



CHATEAU FRONTENAC - QUEBEC



PLACE VIGER - MONTREAL



ROYAL ALEXANDRA - WINNIPEG

CANADIAN PACIFIC RAILWAY HOTEL SYSTEM

Canadian Pacific Hotels from the Atlantic to the Pacific set the standard for hotel accommodation in Canada. Each is distinctive in appointment and style; each has the same superb Canadian Pacific service.

THE CHATEAU FRONTENAC, Quebec, is a famous hotel in the most distinctive city of North America. Standing on Dufferin Terrace, it commands magnificent views of the St. Lawrence.

THE PLACE VIGER, Montreal, is an idea hotel for those who prefer quietness and yet wish to be within easy reach of the business centre. It is Montreal's favorite headquarters for reunions.

THE ROYAL ALEXANDRA, Winnipeg, so well known and so popular with travellers and it has been enlarged to twice its original size.

THE PALLISER, Calgary, a handsome new model of metropolitan standard, from the roof of which the snow-capped Canadian Pacific Rockies are visible.

THE HOTEL VANCOUVER, a spacious hostelry that overlooks the Strait of Georgia and contains 635 rooms.

THE EMPRESS, Victoria, a luxurious hotel that appeals to the artistic sense, in a city of picturesque homes and Old Country atmosphere.

The above hotels and others similarly situated at strategic points on the main transcontinental line of the Canadian Pacific Railway at McAdam, N.B., Sicamous, B.

C., and Penticton, B.C., are open all the year round. Six others—at St. Andrews, N.B., (The Algonquin), four famous Rocky Mountain resorts—Banff (Banff Springs Hotel), Lake Louise (Chateau Lake Louise), Emerald Lake, near Field, B.C., and Glacier, B.C.—and Cameron Lake Chalet, on Vancouver Island—are open in summer only.

Any C. P. R. Passenger Agent will furnish particulars, or write:
F. L. HUTCHINSON, Manager-in-Chief, Hotel Department.
C. E. E. USSHER, Passenger Traffic Manager.

CANADIAN PACIFIC RAILWAY, MONTREAL



PALLISER - CALGARY



HOTEL VANCOUVER



EMPRESS HOTEL