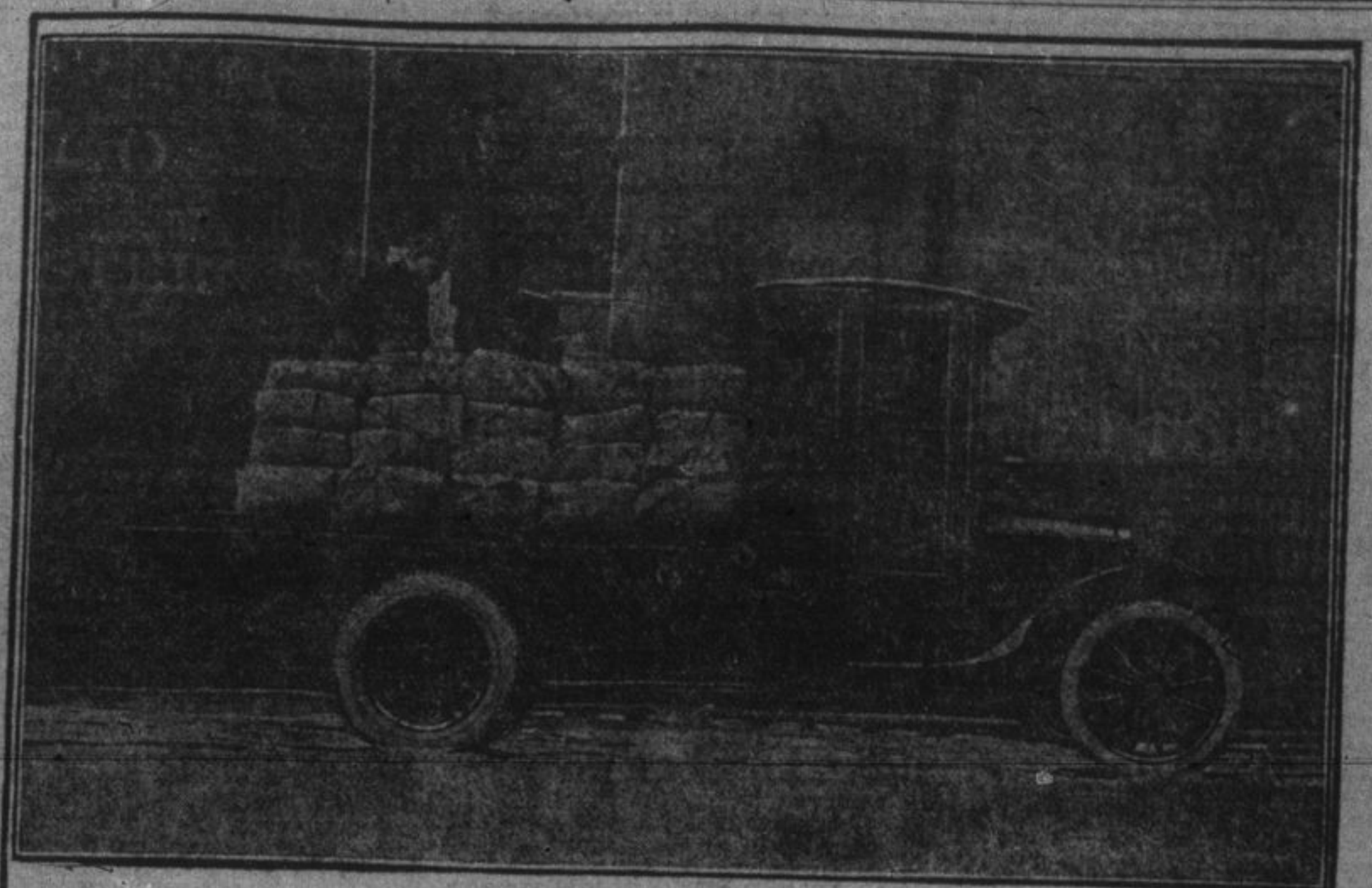


Market Reports

LIVE STOCK MARKETS. Toronto, Nov. 21.—Heavy steers, choice, \$11 to \$12.50; medium butch...

GRAIN QUOTATIONS. Toronto, Nov. 21.—Manitoba wheat—No. 1 northern, \$2.30; No. 2, \$2.27; in store, Fort...



J. Thompson & Son WHOLESALE FRUIT, PROVISION, AND COMMISSION MERCHANTS

Dear Sirs—Please look our order for another load truck for delivery on the earliest possible date.

The Ford One-Ton Truck is an invaluable asset for country or city use, both winter and summer. VanLoven Bros., Dealers, Kingston



The Will to Save

Saving is a prosperity promoting habit and is easily acquired. Every person can save if they WILL—all that is necessary is to make a start.

THE STANDARD BANK OF CANADA

Head Office in TORONTO KINGSTON BRANCH, J. F. ROWLAND, Manager.

SAVE AND PROSPER

The companions of Victory are Work and Thrift. If the people of Canada practise these essentials, our great problems of reconstruction can be settled to the mutual benefit of all.

THE CANADIAN BANK OF COMMERCE

PAID-UP CAPITAL \$15,000,000 RESERVE FUND \$15,000,000 KINGSTON BRANCH, F. M. Gibson, Manager.

Upon Your "To-day" Depends Your "To-morrow"

WHAT you can save to-day is the foundation upon which you will lay your life-work. The man with capital, even be it small, is the man who is ready when opportunity arises.

G. B. McKAY, Manager

THE BANK OF TORONTO

Capital \$5,000,000 Reserves \$6,625,623

Winnipeg, Nov. 21.—Oats—No. 2 C.W., 56¢; No. 3 C.W., 54½¢; extra No. 1 feed, 84¢; No. 1 feed, 81½¢; No. 2 feed, 75¢; rejected, 1.33 1/2.

Chicago, Nov. 21.—Corn—No. 2 mixed, \$1.52 to \$1.53 1/2; No. 3 yellow, \$1.53 to \$1.54 1/2.

New York, Nov. 21.—Flour unsettled. Spring patents, \$12.50 to \$13. Spring clears, \$9 to \$10; winter straight, \$10 to \$10.30.

GENERAL TRADE. Duluth, Nov. 21.—Lansed, spot, \$4.77 to \$4.80; arrive \$4.75; November, \$4.75 bid; December, \$4.85 bid; May, \$4.61 bid.

Butter. Belleville, 57 to 60¢ per pound; Brantford, 55 to 67¢; Cobourg, 60¢; Chatham, 75¢; Guelph, Hamilton and Stratford, 60 to 65¢; Kitchener, 58 to 60¢; Port Hope, 55¢; London, 55 to 58¢; St. Thomas and Woodstock, 65¢ per pound.

Eggs. Belleville, 70 to 80¢ per dozen; Brantford, Cobourg, Chatham, 80 to 75¢; Guelph, 81 to 90¢; Hamilton, 90¢ to \$1; Kingston and Woodstock, 75 to 80¢; Kitchener, 85 to 70¢; Port Hope, 68 to 73¢; London, 65¢; St. Thomas, 75¢; and Brantford, 74 to 75¢ per dozen.

Potatoes. Belleville, Hamilton and St. Thomas, \$2.25 to \$2.50 per bag; Brantford, \$2; Cobourg and Port...

Meats. Porthouse steak, lb., 27 to 30; Sirloin steak, lb., 27 to 20; Round steak, lb., 25 to 30; Rib roast, lb., 25 to 30; Shoulder roast, lb., 20 to 25; Boiling carcass, cwt., 15 to 17; West'n hnds, cwt., 15.00; Local carcass, cwt., 15.00; Local hnds, cwt., 18.00 to 19.00.

Pork. Loin roasts, lb., 40; Leg roasts, lb., 40; Chops, lb., 45; Hogs, live, cwt., 27.00; Hogs, dressed, cwt., 25.00; Lamb—Fronks, 25; Legs, 30; Leg, 35; Loins, 30 to 35; Chops, 40; Mutton, lb., 25 to 30.

Fish. Cliscos, 22; Cod, lb., 10 to 12 1/2; Eels, lb., 12 1/2; Flounders, lb., 10 to 12 1/2; Fillets, lb., 25; Finnan haddie, lb., 20; Haddock, fresh, lb., 12 1/2; Halibut, lb., 10; Herrings, fresh, lb., 12 1/2; Kippers, pr., 15; Oysters, 80 to 1.00; Mackerel, lb., 15; Fresh, lb., 13 1/2; Pike, lb., 13 1/2 to 15; Rockfish, lb., 25 to 35; Salmon, lb., 25 to 35; Smelts, lb., 25 to 35; Soles, lb., 12 1/2; Trout, salmon, lb., 20 to 25; Tom eels, 12 1/2; Whitefish, fresh, lb., 15 to 20; Whitefish, lb., 12 1/2.

Fruit. Apples, pack, 40 to 50; Bananas, doz, 40 to 50; Coconuts, each, 15 to 20; Grape fruit, 10 to 15; Grapes, lb., 40 to 45; Lemons, doz, 40 to 45; Oranges, doz, 40 to 75; Pears, doz, 50 to 80.

SOME MECHANICAL HINTS

Removing Hub Washer. The job of removing the wheel hub washer of the front wheel is often the almost impossible job, but it can be made easy by the use of a simple tool that can be made by any car owner. Take a pair of round-jawed pliers five or six inches long. File a notch on the inside of each jaw near the end and then reduce the diameter of the jaws until they just slip into the holes in the ends of the split washer. With this weapon it is easy to remove the washer. Simply hook the ends of the pliers into the holes, close the pliers to contract the washer so that it may be drawn out of the groove, when it is easy to slip it out by running a screwdriver point around the edge.