

Lake Ontario Trout and Whitefish, Fresh Sea Salmon, Haddock, Halibut and Cod.

DOMINION-FISH CO., Canada Food Board License No. 9-3244

G. WASHINGTON PREPARED COFFEE

made in the cup at the table. All size cans in stock. Prompt Delivery.

D. COUPER 241-3 Princess street. Phone 74

EARLY CLOSING

For the benefit of our employees our store will close at 5 o'clock every evening except Saturday.

A. GLOVER License No. 6-4824

Quality counts when you are buying food supplies more than any other article. Our stores are stocked with the best that can be bought. Call and see or

Phone 530

The Unique Grocery and Meat Market

490 to 492 Princess Street C. H. PICKERING, Prop.

EMPIRE GROCERY

High Grade Groceries, Fruits and Vegetables, Cooked and Uncooked Meats.

LEWIS ORR

820 King St. Phone 340 License No. 8-27446

Do It Now

Send us your hair or felt mattress to be renovated and recovered.

Feather beds and pillows thoroughly sterilized and made into mattresses at modern cost. Call or phone.

Kingston Mattress Company

558 Princess street. Phone 627.

BUTTER WRAPPING PAPER

Stock Printing, "Choice Dairy Butter," 1,000, \$2.85; 5,000, \$13.00; 10,000, \$23.00. Specially printed with your own copy, 1,000, \$3.97; 5,000, \$15.00; 10,000, \$25.00. Special prices on larger quantities. Shipping charges paid on 5,000 and over. BRITISH WHIG PUBLISHING CO. KINGSTON

NO MORE KIDNEY TROUBLE

Since He Commenced to Take "Fruit-a-lives"

"Three years ago, I began to feel run-down and tired, and suffered very much from Liver and Kidney Trouble. Having read of 'Fruit-a-lives', I thought I would try them. The result was surprising. I have not had an hour's sickness since I commenced using 'Fruit-a-lives', and I know now what I have not known for a good many years—that is, the blessing of a healthy body and clear thinking brain." WALTER J. MARRIOTT, 60c. a box, 6 for \$2.50, trial size 25c. at all dealers or sent postpaid on receipt of price by Fruit-a-lives Limited, Ottawa.

We have a supply of cut hard wood and kindling.

J. Sowards Coal Co.

Prince George Hotel TORONTO In Centre of Shopping and Business District 250 ROOMS with Private Bath EUROPEAN PLAN

Get Your Digestion in Shape

Many ailments are caused by stomach weakness. Faulty digestion leads to biliousness, sick headache, dizziness, sallow skin and eruptions. Maintain a healthy condition of the stomach and you will get rid of the chief cause of your sufferings. Do not neglect the laws of health. Keep stomach, liver and bowels in order by timely use of

BEECHAM'S PILLS

Largest Sale of any Medicine in the World. Sold everywhere, in boxes, 25c. The reparative you think of when it is everlastingly too late to work off may save you a friend. The sneer of the jealous fool is apt to proclaim the wise man's merit.

THE MARKET REPORTS

LIVE STOCK MARKETS

Toronto. Toronto, Sept. 3.—Choice heavy steers, \$13.75 to \$14.50; good heavy steers, \$12 to \$12.25; butchers' cattle, choice, \$12.50 to \$13; do, good, \$11.50 to \$12; do, common, \$7 to \$8; bulls, choice, \$10 to \$10.50; do, medium, \$9.50 to \$9.75; do, rough, \$8 to \$8.25; butcher cows, choice, \$10.25 to \$10.75; do, good, \$9 to \$9.25; do, medium, \$7 to \$8; stockers, \$10 to \$11.25; canners and cutters, \$4.75 to \$5.75; milkers, good to choice \$11 to \$14; do, com. and med., \$6 to \$7.5; springers, \$9 to \$10; light ewes, \$8 to \$8.50; yearlings, \$10.25 to \$11; sprigs lambs, per and heavy weight choice and prime, \$15.75 to \$18; medium and good, \$11.50 to \$15.75; common, \$9.50 to \$11.50; light weight, good and choice, \$13.50 to \$17.50; common and medium, \$9.25 to \$13.50. Butcher—cattle, heifers, \$6.75 to \$14.50; veal calves and cutters, \$6.50 to \$6.50. Veal calves, \$20 to \$20.50; feeder steers, \$7.25 to \$12.75; stocker steers, \$6.75 to \$10.25. Lambs, 84 lbs. down, \$12 to \$15.25; culs and common, \$7.75 to \$11.50; yearling wethers, \$10 to \$11.25; ewes, medium and good, \$7.25 to \$8.50; culs and common \$2.50 to \$6.50.

Chicago. Chicago, Sept. 3.—Hogs, top, \$20.85; heavy, \$17.50 to \$19.50; medium, \$18 to \$20.85; light, \$19.50 to \$20.50; light lights, \$19 to \$20; heavy packing sows, smooth, \$16.25 to \$17; packing sows, rough, \$15.50 to \$17.25; pigs, \$15.50 to \$19.25. Beef steers, \$10.50 to \$11.25; choice and prime, \$15.75 to \$18; medium and good, \$11.50 to \$15.75; common, \$9.50 to \$11.50; light weight, good and choice, \$13.50 to \$17.50; common and medium, \$9.25 to \$13.50. Butcher—cattle, heifers, \$6.75 to \$14.50; veal calves and cutters, \$6.50 to \$6.50. Veal calves, \$20 to \$20.50; feeder steers, \$7.25 to \$12.75; stocker steers, \$6.75 to \$10.25. Lambs, 84 lbs. down, \$12 to \$15.25; culs and common, \$7.75 to \$11.50; yearling wethers, \$10 to \$11.25; ewes, medium and good, \$7.25 to \$8.50; culs and common \$2.50 to \$6.50.

New York. New York, Sept. 3.—Beeves, steers, \$9.50 to \$10.75; bulls, \$7 to \$10; cows, \$4 to \$10. Calves, veals, \$18 to \$24; culs, \$4 to \$17; wethers, \$10 to \$14. Sheep, \$4.50 to \$8.50; culs, \$2 to \$4; lambs, \$9 to \$16.75; culs, \$6 to \$8; hogs, market wethers, at \$20 to \$41; pigs, \$13.50; rough, \$17.50.

Buffalo. Buffalo, Sept. 3.—Hogs, heavy, \$20.85 to \$21; mixed, \$20.85 to \$21; Yorkers, \$21 to \$21.25; light Yorkers, \$19.25 to \$19.50; pigs, \$19 to \$19.50; roughs, \$16.50 to \$17; stags, \$12 to \$14.50. Lambs, \$8 to \$15.75; yearlings, \$7 to \$12; wethers, \$10 to \$10.50; ewes, \$5 to \$9.50; mixed sheep, \$9.50 to \$10.

Montreal. Montreal, Sept. 3.—Steers per 100 lbs.: choice, \$13 to \$13.50; good \$12 to \$12.50; fairly good, \$11 to \$11.50; fair, \$10 to \$10.50; medium, \$9 to \$9.50; light steers, \$8 to \$8.50; common, \$7 to \$7.50. Cows: choice, \$9.75 to \$10; good, \$9 to \$9.50; fair, \$8.50 to \$8.75; medium, \$8 to \$8.25; common, \$6 to \$6.50; canners, \$4.50 to \$5. Butcher choice, \$8.75 to \$9; good, \$8 to \$8.50; fair, \$7.50 to \$7.75; medium, \$6.25 to \$6.75; common, \$5.50 to \$6. Sheep and lambs: Ontario lambs, \$13.50 to \$14; Quebec lambs, \$12.50 to \$13.00; Ontario sheep, \$7.50 to \$8; Quebec sheep, \$6.50 to \$7; Hogs, Selects, \$12.50 to

SAVINGS, Thrift, Independence—all these are the outcome of the same impulse and attain the same objective—PROSPERITY. The Standard Bank of Canada can help you to attain it.

THE STANDARD BANK OF CANADA KINGSTON BRANCH J. F. ROWLAND, MANAGER

GRAIN QUOTATIONS. Toronto. Toronto, Sept. 3.—Manitoba wheat No. 1 Northern \$2.30; No. 2 Northern, \$2.27; No. 3 Northern, \$2.23. In store Port William.

Manitoba oats—No. 2 C. W., \$9 3/4; No. 3 C. W., \$8 3/4; extra No. 1 feed, \$8 3/4; No. 1 feed, \$7 3/4; No. 2 feed, \$4 1/2 c. in store Port William. Manitoba barley—No. 3 C. W., \$1.34 1/2; No. 4 C. W., \$1.30; rejected, \$1.23 1/2; feed, \$1.23 1/2. In store Port William.

American corn—No. 3 yellow, nominal; No. 4 yellow, nominal. Ontario oats—No. 3 white, 88 to 90c, according to freights outside. Ontario wheat—No. 1 Winter, per car lot \$2.00 to \$2.06; No. 2, do., \$1.97 to \$2.03; No. 3, do., \$1.93 to \$1.99. I.o.b. shipping points, according to freights.

Ontario wheat—No. 1 Spring, \$2.02 to \$2.08; No. 2 Spring, \$1.99 to \$2.05; No. 3 Spring, \$1.95 to \$2.01. Barley—Malting, \$1.31 to \$1.35, according to freights outside. Buckwheat—Nominal. Rye—Nominal. Manitoba flour—Government standard, \$11. Toronto.

Ontario flour—Government standard, Montreal and Toronto, \$10.20, in jute bags, Prompt shipment. Millfeed—Car lots—Delivered Montreal freights, bags included—Bran, per ton, \$45; shorts, per ton, \$55; good feed flour, per bag, \$8.50. Hay—No. 1 per ton, \$23 to \$25; mixed, per ton, \$19 to \$21, track, Toronto.

Straw—Car lots—Per ton, \$10 to \$11, track Toronto. GENERAL TRADE Montreal. Montreal, Sept. 3.—Butter, per pound—Finest creamery, 57c; solids,

50c; dairy butter, 49c. Eggs, per dozen, strictly new laid, 64c; selected 60c; No. 1, 5c; No. 2, 4c. Cheese, per pound, new 28c; old 32c. Lard, per lb., 38c. Shortening, per lb., 31c. Hams, per pound, large 42c small, 45c; cooked ham, per lb., 65c. Bacon, per lb., Windsor boneless 52c; breakfast, 56c to 59c. Dressed poultry, per lb.—Milk fed chickens, 45c; fowls, 33c to 35c; geese, 30c; turkeys, 50c. Honey, per lb.—White clover, combs, 26c, bulk, 25c; buckwheat, 20c. Maple Syrup, Imperial gallon \$2.60 to \$2.75; standard, lb. 26c to 28c. Beans, per bushel, Canadian hand-picked, \$5.50; peas, \$3.50. Potatoes, per 90 lb. bag, \$2.25 to \$2.75. Dressed hogs, per 100 lbs., fresh killed about \$27 to \$33. Flour, per bushel, all lots, Government standard, \$11; smaller quantities, delivered to the trade, \$11.75; winter wheat per bbl \$10 to \$10.30; in second-hand bags, \$10.

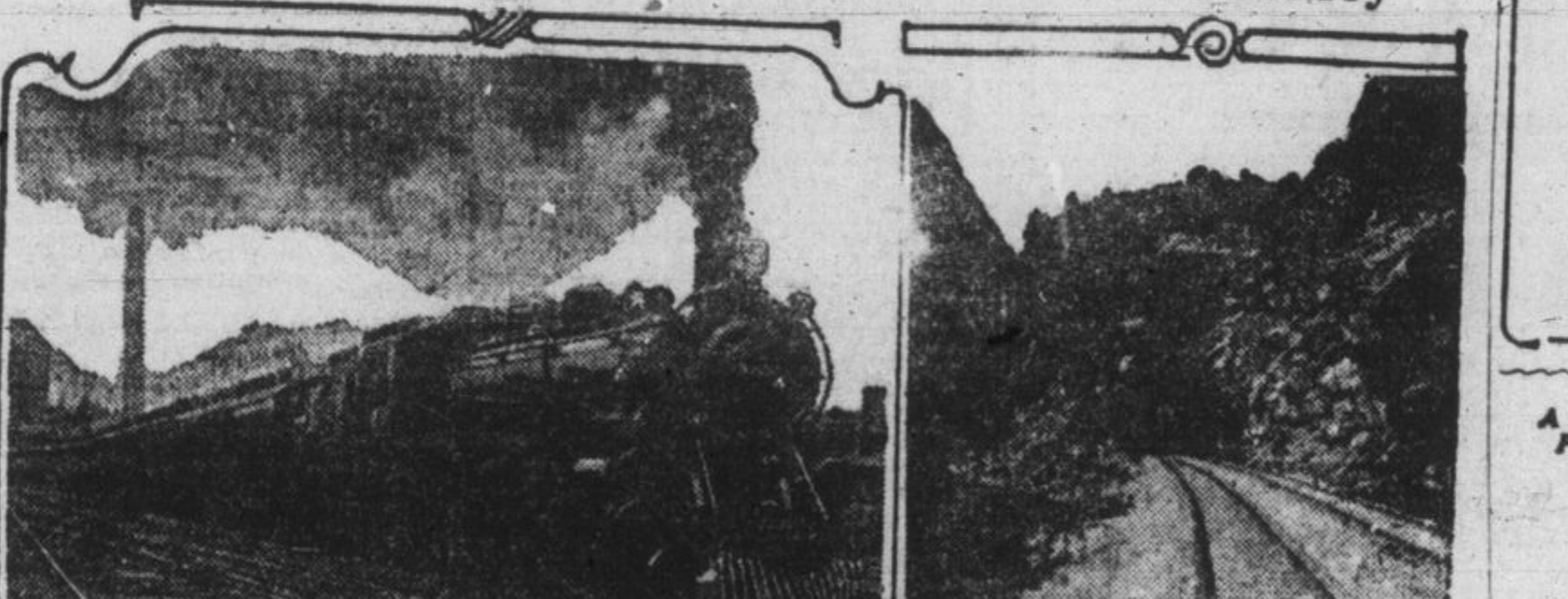
MURVALE SUFFERS LOSS Through the Death of the Late Nelson Boyce. Murvale, Sept. 1.—The late Nelson Boyce will be greatly missed in Sunday school work. Until a year ago he was prominent in all church work. He was loved and honored by all who knew him. The funeral service was held at his late residence by Rev. Mr. Stewart, Rev. Mr. Waddell and Rev. Mr. Kelly.

C. P. R. have their boarding car here with the men who are repairing culverts and platforms. Visitors: Mr. and Mrs. Vanliven at Max Purdy's; Miss Milnap, Odessa, at Mr. Murtion's; Mrs. Robt. Miller and Miss Franke Lake, Wilton, at Mrs. B. Purdy's; Francis Shellington at Mr. C. Kennedy's; Stanley Bottling at H. Sturdevant's; Mr. Robert Woolley and son Russell at her father's, S. Roblin's; David Taggart at Max Purdy's; R. Davis and family, city, at his father's; Wm. Davis, Mr. and Mrs. Thomas Swerbrick, at J. Shellington's. A number of the young people attended the garden party at Sydenham last week.

DOGS KILLING SHEEP. Claims Are Filed Against the Township of Kingston. Dogs are committing ravages among the sheep of the country. The latest claim filed against the township of Kingston is one for \$300 made by Oliver Gravelle. Last week fifteen fine breeding ewes and six lambs were killed. The dogs are believed to be the same that visited R. Polk's place and killed sheep valued at \$150. McAdoo & Patterson about the same time last winter lost sheep valued at \$200. The dogs were not identified, because the mischief was done at night while the owners slept. In such cases the township must pay the claim and owing to the large sums involved this year this season, it is possible that drastic regulations regarding dogs will be demanded.

Dollar Day, Thursday, Sept. 4th. Allan M. Reid Shoe Store. See windows for bargains. What a change a woman makes in a man's life—and what a lot of change she requires while making it. Boarding houses are probably so called because a man is expected to plank down in advance.

Fastest Transcontinental Train in the World for the Business Man in a Hurry



Trans-Canada Express leaving Windsor St. Station, Montreal

Taken from Observation Car in Canadian Pacific Rockies



The Gap—Entering Canadian Pacific Rockies

Now that the era of reconstruction is here, the business man, who has been taxed to the limit, bought bonds to his capacity and given until it hurts to be considered again. He is to be permitted to get from place to place quickly and he is to be given every assistance to revitalize the business of America. The railways are the veins and arteries upon which a healthy business body must depend, therefore normally much of his help must come from them. The Canadian Pacific, a privately run road is the first of the railroads to help the business man. On June 1st, the first "Trans-

Canada"—the new transcontinental express of the C. P. R.—pulled out of the Windsor St. Station in Montreal filled to capacity on its three thousand mile run to Vancouver. This is the fastest transcontinental train in the world, making the trip from Montreal to Vancouver in less than four days, to be exact, 83 hours and 30 minutes, and from Vancouver to Montreal in 52 hours 15 minutes, the run being made without change of cars. A whole business day is thus saved for the Business-Man-in-a-Hurry. An interesting point in connection with this train is the fact that more than half of the passengers are gen-

erally registered from New York, Philadelphia, Boston and other American cities, a considerable number being booked for Banff, Lake Louise and points west. One thinks of a transcontinental train as a single unit, but in reality it is made up of a number of complete units. A daily service, the trip being four days, requires four trains running each way simultaneously. The equipment of the new de luxe train has an estimated value of \$3,000,000, using for the daily run seatbound and westbound, 5 sleeping cars, 5 compartment cars, 15 diners and 24 locomotives.

87 Years of Service The foundation stone of any Bank's success must be service to the public. The 87 years of steady growth of this Bank, its steady increase in assets and resources, are a measure of the sound, consistent, friendly service it extends to its customers. May we not serve you, too? THE Bank of Nova Scotia

Draw on Your Customers through the Merchants Bank. With Branches in all parts of Canada, and correspondents abroad, this Bank is in a position to present Drafts promptly, have them accepted, and collect payment, with the least possible trouble and cost to you. The Manager will be glad to take up this matter with you. THE MERCHANTS BANK OF CANADA Established 1864. Head Office: Montreal. Kingston Branch, H. A. TOFTBLD, Manager. Yvona Branch, J. W. McCLEMMONT, Manager. Safety Deposit Boxes to Rent at Kingston Branch.

All classes of high yield investments—Corporation, Government and Municipal. Private wires—New York, Chicago, Montreal, Toronto. STOCKS—GRAIN—COTTON BONGARD, RYERSON & CO. 587 Bagot St. Phone 1738. E. J. Bongard, Manager

NEW YORK FRUIT STORE CHOICE CALIFORNIA FRUIT BARTLETT PEARS 40c to 60c a doz. PEACHES 30c to 50c a doz. PLUMS 25c to 40c a doz. ORANGES 30c to 50c a doz. BANANAS 30c to 50c a doz. Goods delivered to all parts of the city. 314 Princess St. Phone 1405

Why Corns Hurt Note this diagram picture of a corn. Note its conical shape. The cause of the corn is pressure. And pressure makes it hurt. The point of the corn is pushed into the nerves. Applying a Blue-jay plaster instantly removes the pressure. Note the felt ring (A) in the picture below. The ring gives barefoot comfort in the tightest shoes. But that is temporary. One should not continue a ring. The corn should be quickly ended. The bit of B&B wax in the center of the ring does that (marked B in illustration below). In two days, usually, the whole corn disappears. It stops the pain, then ends the corn. And it wraps the corn so the action is undisturbed. Then the action of the B&B wax is centered on the corn. Held there by the rubber coated adhesive tape (C) which wraps comfortably around the toe. Healthy tissue is not affected. These are the reasons why millions of people have adopted the Blue-jay method. Keeping corns is folly when this easy way can end them. Treating them in cruder ways is inexcusable. For your own sake, convince yourself by applying Blue-jay to one corn.

REO RELIABILITY. On schedule to the minute, on the job all the time and at a low cost of operation. EVER HEAR OF A REO stopping save on the initiative of the driver? The Reo is as reliable as the sun in its orbit. OVER SIZE BEARINGS. Which means being capable on occasion, of carrying twice, yes, three times its rated load, without danger of a breakdown. Boyd's Garage, 129 Brock Street Phone 201