

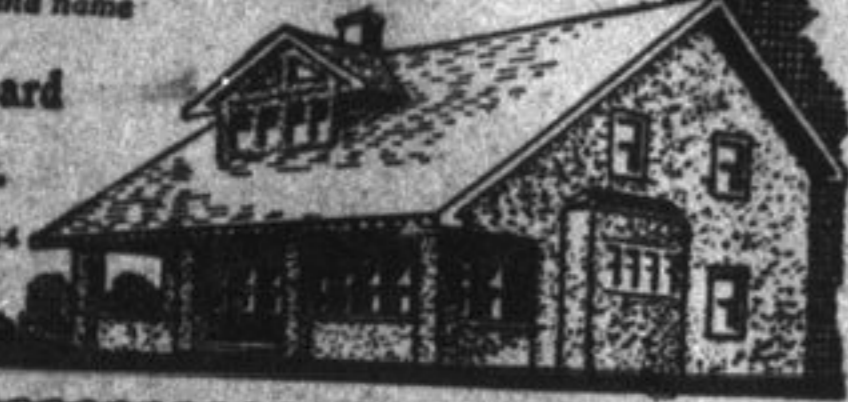
### For Cottage or Mansion

Whether for small or large buildings, the usefulness and economy of

### STUCCO BOARD

Is just as great. Makes substantial, artistic houses, proof against heat and cold, wind, weather, fire and vermin. With it you can build now at the price you would have paid for brick in 1914. Saves 25% of labor, 25% of cost of material. No sheathing boards, building paper, furring strips needed. Made of kiln-dried Pine Laths dovetailed to hold the stucco firmly, set by immense pressure in Asphalt Mastic, on sized Sulphite-Board. Perfectly rigid, cannot warp, shrink, or swell.

Write for samples, booklets and name of our nearest dealer. Bishopric Wall Board Co. Limited OTTAWA, ONT.



### Drink Charm Black Tea

Sold in Packages Only

GEO. ROBERTSON & SON, Limited

Established 1870

### TWEDDELL'S

For all new style, good wearing

Suits \$20 up to \$45

All Prices Between

### PURE ICE CREAM

SERVE IT FOR LUNCHEONS, DINNERS AND SUPPERS. Most modern machinery used in making our Ice Cream—the ingredients are the best—nothing but pure cream used. Prompt delivery to all parts of the city.

### Superior Ice Cream Parlor

204 Princess St. Phone 648  
McLaughlin's Old Stand

### Purina Chicken Chowder Helps Hens Moul

Few hens can produce feathers and eggs at the same time. Feathers are mostly protein. Purina Chicken Chowder helps hens moult because it runs high in protein. It is not a tonic, but a wholesome, scientific, balanced feed, to be fed with Purina Scratch Feed. These two form a perfect ration for moulting and laying hens. Grain feeds are not suitable for moulting, and unless Purina Chicken Chowder is fed, moulting will be slow, recovery slow, and the chances of winter egg laying considerably reduced. Feed Purina Chicken Chowder NOW!



### You want Eggs next Winter

Ask your dealer for Purina Chicken Chowder and Purina Scratch Feed, guaranteed to make hens lay more eggs. Sold in Chequerboard Bags only at all Feed Stores.

The Chisholm Milling Co., Ltd., Jarvis St., Toronto

Get a copy of our Monthly Investment Review. Issued about 15th of each month. It will be of interest to you. Covers just what you wish to know.

You may have same by calling at our office or sending us your name and address. August now ready.

### BONGARD, RYERSON & CO.

287 Baggot St. Phone 1728. H. J. Bongard, Manager

### SANITARY GARBAGE RECIPTACLE

This consists of a galvanized Garbage Pail, set in a steel retainer, which is buried in the ground. The cover is of heavy cast iron. You merely have to put your foot on a lever and the cover opens. Dogs or flies cannot get at your garbage. Call and see them.

Lemmon & Sons 187 PRINCESS STREET

## Market Reports

### LIVE STOCK MARKETS.

**Toronto.** Toronto, Aug. 22.—Export cattle, choice, \$13.50 to \$14.50; export cattle medium, \$12.25 to \$13.50; export bulls, \$10 to \$11.50; butcher cattle, choice \$12.25 to \$13.50; do., medium, \$11 to \$12; do., common, \$8 to \$9.25; butcher cows, choice, \$10.50 to \$11.50; do., medium, \$9.50 to \$10.50; do., canners, \$8.50 to \$9.50; butcher bulls, \$7.50 to \$8.50; feeding steers, \$10 to \$11.50; stockers, choice, \$8.50 to \$9.50; milkers, choice, \$7.50 to \$8.20; milkers, choice, \$5 to \$7.50; springers, choice, \$90 to \$135; sheep, ewes, \$8 to \$10; bucks and culls, \$5 to \$8; lambs, \$16.50 to \$17.75; hogs, fed and watered, \$23.25 for hogs, L.O.B., \$22.25; calves, \$18 to \$21.

**Montreal.** Montreal, Aug. 22.—The best select of culls sold at \$22.50 per 100 pounds. Choice steers are from \$12.50 to \$13.25; good steers, \$11 to \$12.50, the medium, down to \$9 per 100 pounds. In the butchers' cattle section there was a good demand for cows at from \$9 to \$11 for the better grades per 100 pounds. Common stock was down to \$6 per 100 pounds. Bulls were selling at \$10 to \$10.50 for the best per 100 pounds, while other grades were down to \$6 to \$7 per 100 pounds. The small meat section, aside from hogs, was very steady, and prices did not show much change. Sheep and lambs are a trifle on the easy side, but milk fed calves are in strong demand and prices are keeping high.

**Winnipeg.** Winnipeg, Aug. 22.—Butchers' steers, \$6.50 to \$12.50; heifers, \$6.50 to \$11; cows, \$4 to \$10.50; bulls, \$5.50 to \$7.75; oxen, \$5 to \$6; stockers, \$6 to \$9.25; feeders, \$7 to \$11.10; calves, \$6 to \$9.25; sheep, \$11 to \$13; hams, \$15.50 to \$15.50; hogs, select, \$20 to \$20.50; heavies, \$16.50 to \$17.50; sows, \$14.50 to \$16.50; lights, \$17.50 to \$19; stags, \$8 to \$8.50.

**Chicago.** Chicago, Aug. 22.—Corn—No. 2 mixed, \$1.90 to \$1.95; No. 2 yellow, \$1.95 to \$1.98. Oats—No. 2 white, 72 3/4 to 75c; No. 2 white, 70 1/2 to 75c. Rye—No. 2, \$1.53 1/2 to \$1.54 1/2. Barley—No. 2, \$1.35 to \$1.43. Timothy, \$2 to \$11.75. Clover—Nominal. Pork—Nominal. Lard—\$28.30. Ribs—\$22.50 to \$24.

**GRAIN QUOTATIONS.** Toronto, Aug. 22.—Manitoba Wheat—No. 1 Northern, \$2.24 1/2; No. 2 Northern, \$2.21 1/2; No. 3 Northern, \$2.17 1/2; No. 4 wheat, \$2.11. Manitoba Oats—No. 2 C.W., \$9 1/2; No. 3 C.W., \$8 1/2; extra No. 1 feed, \$8 1/2; No. 1 feed, \$7 1/2; No. 2 feed, \$5 1/2. Manitoba Barley—No. 3 C.W., \$1.36 5/8; No. 4 C.W., \$1.31 5/8; rejected, \$1.23 1/8; feed, \$1.23 1/8. All of the above in store Fort William. American Corn—Track Toronto, No. 3 nominal; No. 4 nominal. Ontario Oats—According to freights outside. No. 3 white, \$7c to 9c. Ontario Wheat—F.O.B., shipping points, according to freights. No. 1 winter, per car lot, nominal; No. 2 winter, \$2.03 to \$2.08; No. 3 winter, nominal. No. 1 spring, No. 2 spring, No. 3 spring, nominal. Barley—According to freights outside. Malt, \$1.35 to \$1.38. Buckwheat—According to freights outside. No. 2 nominal.

### THE KINGSTON MARKET

Kingston Aug. 22nd.

<b>Dairy Produce.</b>	
Creamery butter, lb.	60
Butter, rolls	50 to 55
Whsey butter, car lot, nominal	
Eggs, fresh, doz.	55 to 60
Oleomargarine	25 to 40
Cheese	30 to 35
<b>Poultry.</b>	
Chickens, dressed, lb.	25
Chickens, live, lb.	20 to 22
Hens, dressed, lb.	30 to 32
Hens, live, lb.	20
Turkeys, dressed, lb.	35
<b>Meats.</b>	
Porterhouse steak	20 to 25
Sirloin steak, lb.	20 to 25
Round steak, lb.	20
Rib roast, lb.	25 to 30
Shoulder roast, lb.	25
Boiling cuts	20
West'n carcass, cwt.	21.00
Local hinds, cwt.	20.00
Local fronts, cwt.	18.00 to 20.00
Local hinds, cwt.	22.00 to 24.00
<b>Pork.</b>	
Loin, round, lb.	45 to 50
Leg, round, lb.	45 to 50
Chops, lb.	40 to 45
Hogs, live, cwt.	20.00 to 22.00
Hogs, dressed, cwt.	30.00 to 32.00
<b>Lamb.</b>	
Fronts	30
Hinds	35 to 40
Leg	35
Loin	50 to 40
Chops	40
Mutton, lb.	28 to 35
<b>Flax.</b>	
Ciscoes	22
Cod, lb.	10 to 12 1/2
<b>Bells, lb.</b>	12 1/2
Flour, lb.	10 to 12 1/2
Flour, lb.	10 to 12 1/2
Finnan haddie, lb.	20
Haddock, fresh, lb.	12 1/2
Halibut, lb.	30
Herring, fresh, lb.	12 1/2
Kippers, pr.	15
Oysters, pr.	80 to 1.00
Maokel, lb.	15
Perch, lb.	12 1/2
Pike, lb.	12 1/2 to 15
Rockfish, lb.	10
Salmon, lb.	25 to 35
Smelts, lb.	25 to 30
Sole, lb.	12 1/2
Steak, cod, lb.	15 to 20
Trout, salmon, lb.	20 to 25
Tom cods	10
Whitfish, fresh, lb.	15 to 20
Whittings, lb.	12 1/2
<b>Fruit.</b>	
Apples, doz.	140 to 60
Bananas, doz.	30 to 50
Coconuts, each	15 to 20
Cantaloupes, each	15 to 25
Cherries, basket	1.25
Grape fruit	\$ 1-3 to 15
Grapes, lb.	25
Lemons, doz.	30 to 40
Watermelons, each	1.50 to 1.00
Oranges, doz.	40 to 1.00
Plums	30 to 50
Peaches, doz.	50 to 75
Raspberries	25 to 35
Pineapples, each	25 to 45
<b>Vegetables.</b>	
Beets, peck	25
Cabbage, head	10
Celery, bunch	10 to 25
Cucumbers, each	5 to 10
Lettuce, bunch	5 to 10
Onions, bunch	5
Potatoes, new, bush.	3.00
Tomatoes, lb.	25
<b>Grain.</b>	
Barley, bush.	1.00 to 1.50
Bran, ton	44.00 to 45.00
Buckwheat, bush.	1.40 to 2.25

Cornmeal, cwt. . . . . 5.50 to 6.00  
Corn, yellow feed, bush . . . . . 1.90 to 2.20  
Flour, standard (Gov't) cwt. . . . . 5.75 to 5.90  
Hay, baled, ton . . . . . 26.00 to 28.00  
Hay, loose, ton . . . . . 20.00 to 22.00  
Oats, local, bush. . . . . 1.00 to 1.10  
Oats, local, bush. . . . . 1.00 to 1.10  
Shorts, ton . . . . . 48.00 to 50.00  
Straw, baled, ton . . . . . 12.00 to 14.00  
Straw, loose, ton . . . . . 8.00 to 10.00  
Wheat, local, bush. . . . . 2.25 to 2.65

**Hides, Furs, Etc.**  
Hides, beef, lb. . . . . 15 to 21  
Lamb skins, fresh, up to . . . . . 1.00  
Veal skins, lb. . . . . 53 to 77  
Doeon skins, No. 1, . . . . . up to \$3.50  
Horse skins, No. 1, . . . . . 10.00  
Large, up to . . . . . 10.00  
Tallow cakes . . . . . 10.00  
Wool, washed, lb. . . . . 50 to 65  
Wool, unwashed, lb. . . . . 35 to 50  
Beeswax, lb, up to . . . . . 30  
Shearling, wild, dry, lb. . . . . 50 to 75  
Kips, lb. . . . . 20

Believing that cattle will not break through even a light fence if a single strand of barbed wire be extended in front of it, an inventor has patented a bracket to hold the latter and swing it to either side of the fence desired. Norwegian builders have developed a method of construction for temporary structures in which netting made of wooden rods is fastened to the uprights, bound together with wire and covered with plaster.

**THRIFT Stamps.**  
We strongly recommend the purchase of Thrift Stamps and War Savings Certificates. In this way you not only are aiding your country's finances, but are forming the Savings habit. The Stamps may be purchased at any branch of—  
**THE STANDARD BANK OF CANADA**  
KINGSTON BRANCH  
J. F. ROWLAND - MANAGER

Lake Ontario Trout and Whitefish, Fresh Sea Salmon, Haddock, Halibut and Cod.  
**DOMINION FISH CO.,**  
Canada Food Board License No. 5-2528

**G. WASHINGTON**  
PREPARED COFFEE  
made in the cup at the table. All size cans in stock.  
Prompt Delivery.  
**D. COUPER**  
241-2 Princess street. Phone 78

**GRAND TRUNK RAILWAY SYSTEM**  
AGENCY FOR ALL STEAMSHIP LINES  
For information and rates apply to J. F. Hanley, C.P. & T.A., G.T. Ry, Kingston, Ont.

*The* **MANUFACTURER**  
The strength and organization of this Bank enable it to offer unexcelled facilities to manufacturers doing either a domestic or foreign trade. Manufacturers will find it to their advantage to consult with us regarding their banking requirements.  
**THE CANADIAN BANK OF COMMERCE**  
Kingston Branch, F. M. Gibson, Manager

**CP&OS**  
SAILINGS-RATES  
EMPEROR OF FRANCE  
15,500 Tons.  
Fast, luxurious, 6-day Steamship. Less than 4 days at sea. Sails from  
**QUEBEC-LIVERPOOL**  
4 p.m. October 9th.  
Special train leaves Windsor at Station 5.45 a.m. direct to ship.  
1st, \$170 2nd, \$100, 3rd \$62.75  
War Tax \$5 95 \$3.00  
Special suites and rooms with baths.  
Apply Local Agents  
W. H. MacCallum, Genl. Agt., Toronto.  
**CANADIAN PACIFIC OCEAN SERVICES**

**Why the "Mutual Life of Canada" is so Popular**  
The Mutual placed upon its books in the first five months of 1919 100% more business than in the corresponding months of 1918. The wonderful war-record of the Mutual Life and the prompt payment of the many unexpected claims during the recent epidemic—these have proved the value of the institution. The Mutual, moreover, is in a peculiar sense a people's Company, being in its control democratic, in its economy strictly co-operative. This means that the system is in line with the "spirit of the age" and so the people naturally turn to the Mutual.  
The record of the company for nearly half a century has been one of increasing beneficence, and an ever-growing number of gratified policyholders help on the good work of the agents. As a result there probably is not a more prosperous group of workers in Canada to-day than the representatives of our Company.  
"Be a Mutualist!"  
**The Mutual Life of Canada** WATERLOO ONTARIO  
S. Roughton, District Agent, Kingston, Ont.

**CUNARD ANCHOR-DONALDSON**  
Regular Passenger Services  
**ANCHOR-DONALDSON**  
MONTREAL TO GLASGOW  
Cassandra Aug. 24 Saturday Sept. 17  
Cassandra Sept. 24 Saturday Oct. 14  
Cassandra . . . . . October 30  
**OUNARD LINE**  
NEW YORK TO LIVERPOOL  
Carmania Aug. 30 Orinda Sept. 23  
Carmania Oct. 7 Orinda Oct. 22  
NEW YORK TO PLYMOUTH, CHERBOURG  
Caronia Sept. 24 Caronia Oct. 29  
NEW YORK-PLYMOUTH, HAVRE, SOUTHAMPTON  
Royal George Aug 30 R1 George Oct. 4  
NEW YORK-CHERBOURG, SOUTHAMPTON  
Mauretania Sept 17 Mauretania Oct. 13  
W. 1-PLYMOUTH, HAVRE, LONDON  
Saxonia . . . . . August 30  
NEW YORK TO PIRAEUS, GREECE  
Pannonia . . . . . August 30  
**ANCHOR LINE**  
BOSTON TO GLASGOW  
Elvina . . . . . September 16  
NEW YORK TO GLASGOW VIA  
MOVILLE  
Columbia . . . . . September 6  
For rates of passage and further particulars apply to all ticket agents, or to  
**THE ROBERT BORD COMPANY, Limited.**  
60 King Street East  
TORONTO, ONT.  
In 1916 there were in India 9,400,000 girls under the age of sixteen years who were actually married.

**A Suggestion for Saving**  
CASH in the pocket encourages careless spending. You will find it a much easier task to save if you keep your "Spending" money in a Savings Account with The Bank of Toronto. There it is safe and can be drawn upon when really needed.  
A reluctance to draw from that account will grow upon you, and protect you from many needless expenditures.  
Once the saving habit is acquired, the account, with its earnings of interest, will steadily grow to a substantial amount.  
Many young men and women are working out this scheme with us to advantage.  
It is a plan worthy of a trial.  
**G. B. McKAY, Manager**  
**THE BANK OF TORONTO**  
Capital \$5,000,000 Reserves \$6,625,623