

In the Automobile World

Truck Economy By Using a Starter.

Truck economy should be the object of every driver. The tendency in the past has been to let the engine run and so have the trouble of cranking. Some drivers are willing to shut off their engine at every stop, and to crank it up again for each start. One who did this in a recent competition found that the gasoline economy was increased three and one-half miles per gallon, which indicates the saving

made by stopping the motor each time. The transportation cost was cut five cents per ton mile, or a saving of \$68.95 per month, or \$823 per year. This is a commendation for a starting system which is now fitted to new models, showing the enormous saving yearly through the use of a starter. The gain of \$323 per year effected by stopping the motor and re-starting is an immense proportion in reality of the original cost of the truck, for it not only saves operating costs, but also a vast amount in the wear and tear placed upon a truck by the continual operation of the motor. Drivers naturally do not like to crank up their trucks at each stop,

and will, therefore, allow the motor to run hour after hour, thus entailing the added expense for gasoline.

BATTERY FORMS MIDDLE LINK OF THE IGNITION

A Few Troubles Which Are Due to a Weak Battery Explained.

The storage battery plays an important part in the electrical system of the modern automobile, but it is only a part of the system and is dependent upon the satisfactory operation of other units to do its work properly.

How the battery is affected by irregularities in other parts of the system is explained by Ken Wilson, of the Wilson Tire Company, tire and battery experts.

The electrical system of an automobile might be compared to a chain in which the storage battery is the middle link. Satisfactory operation of the battery is very necessary to the strength of the chain, but, like a chain link, the battery's usefulness is dependent on the satisfactory operation of other units.

"First, the upkeep of the battery's energy is dependent on the generator. The best of generators are not immune from occasional irregularities due to natural wear and tear of adjustment, and should be inspected occasionally for the purpose of checking up their work. If the generator is not working properly, the effect will first be shown in a gradually weakening battery.

"Too often the battery is blamed for lack of power, when, as a matter of fact, it is literally starving because the generator is not delivering the proper charge or none at all.

Failure of the starter or lights to work properly is not always due to a weak battery. It is possible for starters to get out of order, for wires to become short-circuited, and for contacts and switches to wear out. Often the apparent failure of a battery to hold its own is due entirely to a short-circuit in the electrical system which causes a constant drain on the battery's vitality.

"Irregularities in the operation of the electrical equipment should be attended to at once, as almost invariably they affect the battery in one way or another. Our battery man can usually locate the trouble very readily, and advise the motorist as to what is necessary in the way of adjustment."

SAFETY RULES

Produce Best Results When Few and Specific.

Electric Railway Journal.

The very excellent efforts of the advocates of accident reduction may partly defeat their ends by too great wideness of scope. In the desire to promote general safety the propaganda may be spread out too thin. It is usually better to concentrate attention upon a few definite and considerable dangers which exist on a given property, dangers which are readily recognized by the men who have it in their power to reduce them. A good example of this is the recent poster on "wyeing" put out by the Ontario Safety League, Toronto. It says: "Mr. Motorman, when you throw in the reverse to 'Y' you cannot see plainly where your car is going. Make sure the conductor is on the job on the back platform. Mr. Conductor, when your car is backing at a 'Y' your place is on the back platform ready to give the motorman the bell. You are then the eyes of the car." This is concrete; it is simple; it has evidently been called for by some conspicuous hazards. The important thing about all safety suggestions or rules is to aim them first at the most prolific sources of accident. The emphasis can easily be shifted from time to time, and from the place to place, as indeed it should be if for no other reason than that variety is the spice of safety interest as well as of life generally.

ROBINSON & WILTSHIRE GARAGE

All kinds of cars repaired promptly; cars washed; gasoline, oil, tires and automobile accessories.

1 Motorcycle and Sidecar. For Sale. 239 1/2 Bagot St. Phone No. 177

FORD CARS FOR SALE

We have a few used Ford Cars which we can sell reasonably. All automobile repairs work guaranteed.

Central Garage 285 King St. Phone 2188

CARS FOR SALE OR TRADE

One 1918 Ford Sedan. 1—1917 Chevrolet Roadster, all new tires. One 1917 Overland Roadster. All kinds of cars bought, sold or exchanged.

Bert Stansbury, 180 Regan Road, Phone 1674w

Newest Notes Of Science

Friction of small steel balls polishes silverware in a new machine.

Chili has national forests that cover about 7,000,000 acres of land.

Exposure to ozone for five minutes increases the fermenting power of brewers' yeast.

An English inventor has mounted a tiny electric lamp in the handle of a safety razor.

The temperature of a new electric flatiron can be regulated to four different degrees.

A Japanese chemist has invented an incombustible celluloid that is made from soya bean cake.

Small pockets for valuable, intended to be fastened to linings of shoes, have been patented.

The government of Venezuela is planning to build a highway 653 miles long across that country.

A clip has been invented for holding a spoon on the edge of a cooking pot or medicine glass.

Italy is enforcing a series of regulations governing the width of wheel rims allowed on highways.

Electrical apparatus for sorting leaves of tobacco by length is the idea of a New York inventor.

A recently patented diaphan sprays its contents with mountains of boiling water from its perforated rim.

The Spanish government has assumed full control of important deposits of platinum discovered in that country.

At least thirteen different processes and much intricate machinery are involved in the manufacture of a common match.

An illuminating gas said to be superior to coal gas is being made in some parts of India from castor oil beans.

An inventor has patented a shield for horses' nose bags that is claimed to prevent any loss of grain by spilling.

The Cuban government has established nine wireless stations on the island of Cuba and one on the Isle of Pines.

Reinforced concrete instead of steel is used in a new gas producer, being more resistant to wet ashes than metal.

England and Wales are said to have a rat for every acre of land, causing an annual loss to farmers of \$75,000,000.

Because of the many positions in which they must work, tractor motors are tested at angles varying up to 45 degrees.

The Chinese government has sent students to the Philippines to study scientific forestry as conducted by Americans.

An inventor has patented a fly trap made of paper and cotton, which is intended to be buried when filled with insects.

A German scientist has invented a preparation of solidified glue that can be substituted for rubber for many purposes.

Stepping on the running board automatically opens a new sliding automobile door and another step inside the car closes it.

A Minnesota inventor's blizzard fence to protect railroads has panels which are slid up posts to keep pace with the increasing depth of snow by the force of storms or the jarring of passing trains.

For removing feathers from poultry an electrically operated machine has been invented that pulls them out between rollers, vacuum apparatus gathering them into a receptacle.

How to Store the Storage Batteries.

There are two methods of storing storage batteries, wet and dry. The wet storage consists in recharging the battery and adding water when required to keep the battery from deteriorating. Every battery that is not used for a month or more should be put in the hands of a competent garage man and given this treatment. The dry method of storage cannot be done by a garage man but requires a battery expert. It has the advantage, however, that the battery does not age, no matter how long it is kept out of service. In the dry method the battery is completely dismantled and the plates stored dry.

Even the man who never fails to keep his appointments is apt to fall down when it comes to answering friendship letters.

Dominant Value

The Gray Dort is the dominant value-car for 1919.

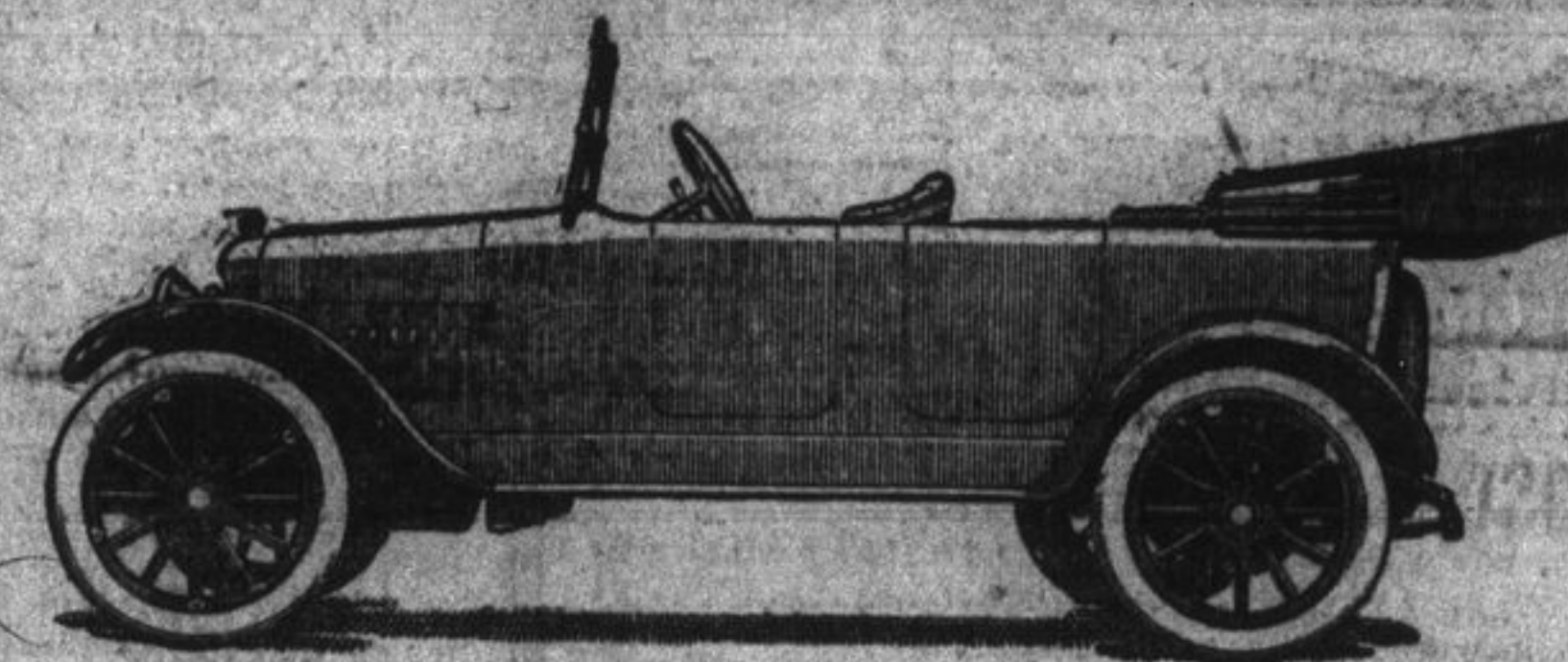
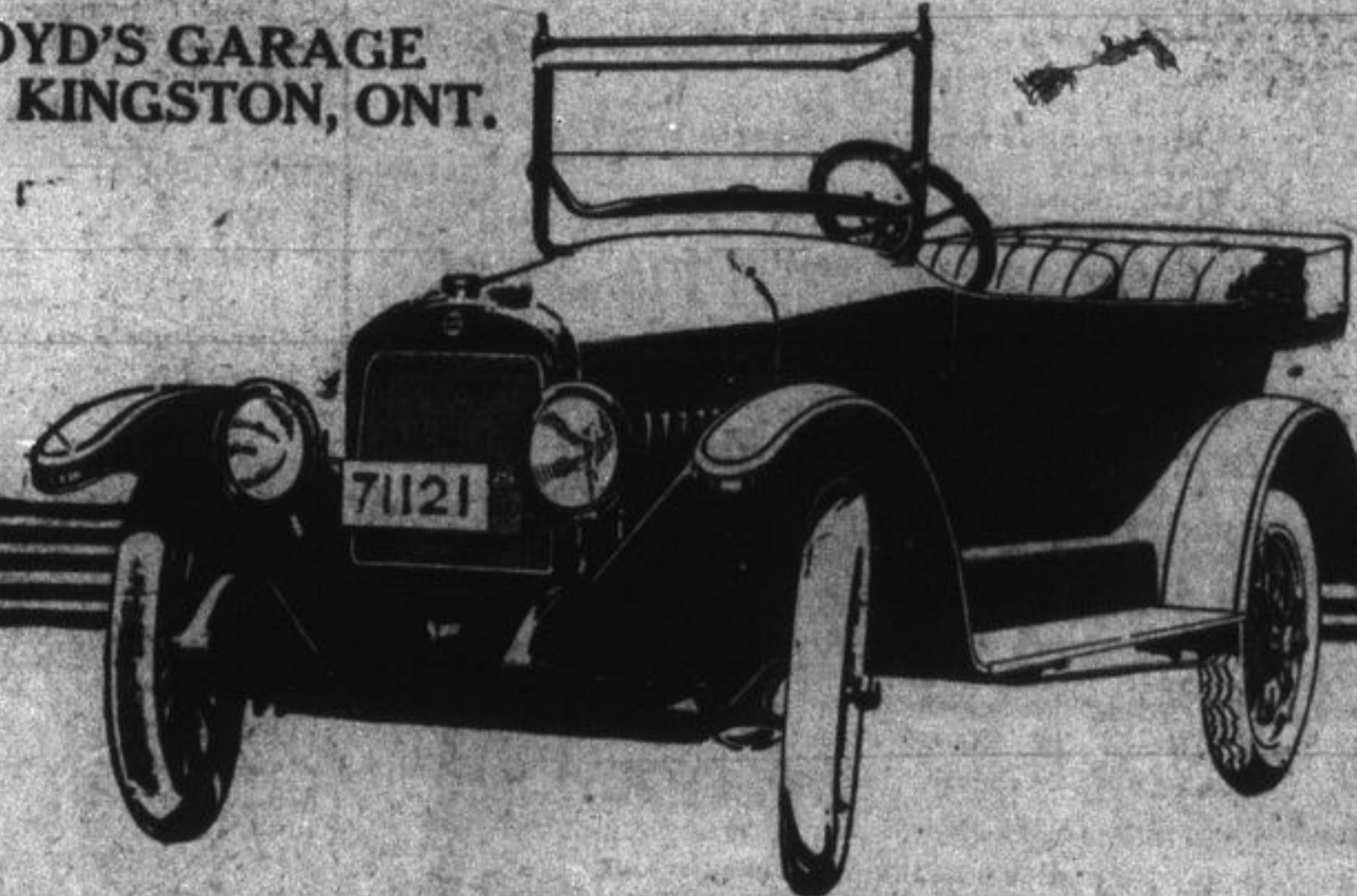
There are other cars bigger and heavier. There are cars lower in price. You do not need the costly weight and size and you will not sacrifice Gray Dort refinements to save a few dollars. What you want and need is the *balanced value* of the Gray Dort. Sufficient power and speed from a wonderful motor; ample room and supreme comfort in riding and driving; standard equipment; beauty of line and finish; a real car, sturdy and long-lasting; and all this at a low price.

The touring car is \$1245; the Gray Dort Special—the car with added refinements and extra equipment, is \$135 extra; there are also a coupe, and a sedan. All prices f.o.b. Chatham and are subject to change without notice.

GRAY DORT MOTORS, Limited - Chatham, Ont.
In the U.S.—Dort Motor Car Co., Flint, Mich.

GRAY DORT

BOYD'S GARAGE
KINGSTON, ONT.



Maxwell

—a car having every luxury except one

THAT luxury is brutish bigness, which means weight, which means a large gasoline tank and filled often, and large tires, and several sets a year.

Maxwell is neither a big car nor a small car. The biggest car made is less than 4 feet longer, and costs around \$15,000 to buy and \$7,000 a year to run.

Most cars are just a foot or a few inches longer.

And others are some smaller—shorter, lighter, less roomy, and hence lack the luxury of a Maxwell.

Nor do they cost, on the average, less to run.

Gas mileage is very nearly the same. Tire mileage is very nearly the same.

But where Maxwell earned its crowning reputation has been its ability to run and run and never quit.

That means repair bills are amazingly low.

You therefore never get mad at a Maxwell—it's the best friend your pocketbook has. And when you stop to think of all those little points of luxury in a Maxwell you're almost sure to whip out your check book and write a check for one.

The 300,000-all-alike idea behind the Maxwell thus, you see, is sound.

MAXWELL MOTOR CO. OF CANADA, Limited, WINDSOR, ONT.

Prices f.o.b. Windsor
Touring - - \$1,275
Roadster - - \$1,275

M. OBERNDORFFER

124 Clarence St.

Kingston



THE UNIVERSAL CAR

There is a limit to the performance of all motor cars.

But, the Ford goes on when other cars are mired; the Ford travels roads that other cars cannot travel.

The Ford turns in and out and around where other cars are blocked.

The owner of a Ford gets a motorizing service that is possible only with a Ford.

Coupe \$975; Sedan \$1175. (Closed models have Electric Starting and Lighting). Runabout \$669; Runabout with Electric Starting and Lighting \$750. Touring \$890. Touring with Electric Starting and Lighting \$790. Standard Chassis \$825. One-ton Truck Chassis \$750. These prices are F.O.B. Ford, Ontario. All prices subject to war tax charges except Truck and Chassis.

VAN LUVEN BROS.

34 Princess Street

Phone 1609

LOST!

A PARTRIDGE NON-SKID TIRE

Description

Had travelled 7,000 miles yet was practically good as new. Only slightly worn in centre of tread.

Valued by its owner for its wear-resisting qualities.

If you judge a tire by the mileage it gives, equip your car to-day with Partridge Tires. —They are gone as their name.

Made by The F.L. Partridge Rubber Company Limited, Guelph, Ont.

EDWIN CHOWN & Son, Kingston, Ont., Distributors

Stop! Look! Listen!

Is the new international signal board for railway crossings. But, do you ever Stop, Look and Think of what is best to do when you have a breakdown either with your Automobile, Motorboat or other machinery.

We can help you if you will consult with us.

If satisfactory repairs can be made we shall be pleased to do them for you.

If new parts are required we shall be only too glad to procure and fit them for you.

We do all kinds of OXY-ACETYLENE WELDING, OXY-CUTTING, etc., and can guarantee our work.

Gasoline engines, Propeller wheels, Spark coils, Plugs, Batteries, etc. Give us a call.

Davis Dry Dock Company

East End of Wellington St., Kingston

It is almost as easy to pick the wrong woman for a wife as it is to pick the wrong horse in a race.

To a youth in love whose salary is \$9 a week an ice cream sign looks like a nightmare.

Some men worry because they have no work and some others worry because they have.