

# In the Automobile World

## IT IS A FARM NECESSITY

### FARMERS OF THE DISTRICT USING MANY TRACTORS.

#### Show Enterprise and Appreciation of Modern Farm Work-Horse.

The Whig is pleased with the way that the farmers of this conservative old district are taking to farm tractors. The Ontario Government Agricultural Department has done much to make them popular but they would never have "taken" were it not for the enterprise of the individual farmers themselves. A number of farmers, particularly those living close to the city are using them, one of the dairymen on the Gananoque road have two.

A tractor is a more satisfactory source of power than the horse because as a rule it delivers its power at a much lower cost while doing work and when not at work does not cost a cent. Furthermore, because it combines a greater amount of power into a single compact unit in the control of one man, it solves to a great extent the hired help problem. It combines of farm machines are made to utilize this power to the best advantage.

A tractor will do practically anything on a farm that horses can do, and in addition is adaptable to belt work. There are some few exceptions, such as planting corn, which can best be done with horses; also cultivating, except where a motor cultivator is used. All operations on a grain farm, however, from plowing to hauling the crop to market, all operations in corn growing with the exception of those mentioned above, all work in haymaking with the exception of operating sweep rakes and stackers can profitably be handled with a tractor. It also gives excellent service on

many out of the ordinary jobs, loading lumber and on road building. Every belt-driven machine within the capacity of the tractor can be driven by it—the feed grinder, pump jack, circular saw, silo filler, thrasher, husker and shredder, hay press and many other machines. The tractor is more conveniently handled on belt work than a portable engine, for the reason that it propels itself from one place to another and is more easily lined up with the machine to be driven than an engine mounted on trucks or skids. It gets no spruce shoulders, its efforts need only be limited by your requirements; as long as it gets fuel oil and water it gives power. At the height of a busy season you know what it means to you to have plenty of power so that you can take advantage of every favorable hour. In the morning full power is available in a moment—no feeding, watering and harnessing to be done. One man can handle a greater amount of power in a tractor than with horses. It is about all the average man wants to do to handle four horses when plowing or enough power to pull one or two plows. One man on a tractor can easily handle enough for three or four plows.

Because of the large diameter and wide face of the average drive wheel of a tractor the pressure is about 11 pounds per square inch on the soil. As compared with this, a 170-pound man wearing a No. 8 shoe creates a pressure of 14 pounds per square inch, while a 1,400 pound-horse pulling a load creates a pressure varying from 18 to 33 pounds per square inch. Of 119 owners of tractors in the northwest 101 say the tractor does not pack the soil. Twenty-two of this number claim that it is beneficial; only nine claim to have noticed any injury to the crop, resulting supposedly from packing of the soil. This proves that in the large majority of soils that are in

condition to be worked with horses, the tractor causes no injury.

The number of years a tractor will last depends upon the number of hours it works each year and the care that is given it. The life of a tractor properly handled and cared for, should be sufficient to more than pay for itself and leave its owner a good profit in time saved.

## ENGLAND HAS NEW AIR-COOLED CAR

### 'Tis a Fussy "Two-Lunger" Weighing About a Third as Much as a Ford.

Among the new automobile models which are being prepared for early appearance in England is a new air-cooled, two-seated car, whose weight, it is said, will not exceed 600 pounds. It will be known as the A B C light car. The engine rating will be from 15 to 28 horse-power, the latter being the estimated rating at 3,000 revolutions. It is for the twin-cylinder horizontal opposed type, depending on its crank-shaft speed for its relatively large power output. It is said the price will be just under \$1,000.

"It will be a fascinating little affair," remarks the *Field* of London, "for those who like a fussy, fast and lively miniature car, limited in its load capacity, depending on its engine efficiency for its performance, and dwindling rapidly in its effort if that efficiency be impaired by any cause. It will be a very welcome addition to our list of British cars, but still it will leave a very wide margin unoccupied between it and the orthodox fifteen-horse-power model now listed at or about 500 pounds."

## HOTSPOT ENABLES CHALMERS.

To Go Twenty-three Miles On Gallon Of Gas. Over twenty-three miles to the gallon is the remarkable gasoline record made by a Chalmers in Ohio according to information received yesterday by Metropolitan Motor's Limited, Chalmers dealer in Toronto.

"This is perhaps a little higher than the average Chalmers consumption," remarked Mr. Campbell, "but is all the more sensational when it is known the record was made with three passengers and over dirt roads near Bellevue, Ohio, where great quantities of sand make auto touring very hard at places."

"The famous Chalmers Hot-spot has much to do with this record of economy. We have owners right in this section, who are getting maximum mileage in their Chalmers. It is not a question of going farther on a gallon of gasoline but of extracting more power and allowing less wastage on every gallon that passes through the manifold. It is this great function of conserving gasoline that has made the Hot-Spot famous."

Dollar Gasoline in Paris. The present price of gasoline in the neighborhood of Paris is \$1.25 a gallon, running to \$1.25 in out-of-the-way districts. For truck work in particular it is believed that the national fuel will be a mixture of 50 per cent. of alcohol, 25 per cent. benzol and 2 per cent. gasoline. An important group of truck owners, among which is the Paris General Omnibus Company, has announced its intention of absorbing as much of this fuel as can be produced in France during the next four or five years.

## Henry Ford's War Output

For the first time since the armistice was signed, official information has been given out by the Ford Motor Company as to its war work. The products it turned out for the government during the period of hostilities are listed as follows: 2,000,000 steel helmets, more than 8,000 trucks; over 6,000 ambulances; 25,000 standard Ford motor cars; 400,000 Liberty engine cylinders; 8,000 calissons, mainly for 155 mm. guns; 25 Eagles delivered and 27 more to be completed by August; 400,000 bearings for Liberty motor cylinders and 1,500 Liberty motors. The statement also reveals that the war department had placed orders for 150,000 of the small two-man military tanks, and 3,000 six-ton military tanks. Not more than a dozen or so of these were delivered, in connection with this order it is stated that the foundation had been laid and the superstructure almost completed for an enormous building at the Ford works, which the company intended to devote exclusively to tank manufacture.

In addition, Ford's plant was used for considerable experimental work. More than one million dollars' worth of work was done in the production of special devices for the British Navy, motion picture reels in behalf of Liberty loans, Red Cross and Patriotic Fund work were made and supplied to the government in sufficient quantities to serve the entire United States; also motion picture reels in volumes sufficient to serve the armies of the United States in France, Italy and Palestine.

During the war the Henry Ford enterprises had an average of 34,000 men employed at the Ford Motor Company plant in Detroit; 6,800 at the shipyards at River Rouge; 4,000 at the blast furnaces in course of construction in the River Rouge district, and 250 at the carburetor plant, making a total average of 45,000 men, practically all on one hundred per cent. government work.

## MERITS OF MAXWELL.

### After 6000 Miles Trial Owner Wants No Other.

"As a booster for the Maxwell car I can give you some varied experiences as I am now driving my second Maxwell and will say that I have tried practically all makes of cars in business ways and know of none under \$1,200 that I would trade for a Maxwell. The only advantage would be in room and weight, which of course increases your upkeep and general expenses which the average man wants to keep away from."

"My first car was used one entire season in taking an appraisal of two entire county systems of telephone exchanges."

"The first year I took a tour through the eastern states, a distance of 1,525 miles, using 59 gallons of gasoline which is a trifle over 22 miles per gallon. I hardly know what oil is, for it seems as if there is never any need to put any in. In the three years past this car has gone about 5,800 miles in which time I have used 325 gallons of gas, 20 gallons of oil, and run the first tires until last fall when I changed as I am a crank on having tires in flat class shape, so though 5,500 miles was enough for one set of tires to go."

"The service given by your station is second to none in community, for while I did not buy my car off you, I have ever received the best of attention, advice and courtesy, often to the discommoding of your interests, for which I am very grateful. The ability and willingness of your station make it a pleasure to ask for assistance and I assure you I shall continue to avail myself of the same as long as I need them."

"I have had no need to buy repairs as there has been nothing broken on my car, but from experiences I know of, I realize you are able to take care of this important feature, rapidly and efficiently."

"I trust this will give you roughly the satisfaction I feel with the Maxwell and I assure you that you will not see me driving a larger car which means double the expense of carrying."

Yours respectfully,  
Fred A. Young,  
Dowagiac, Mich."

## RECENT TESTS MADE

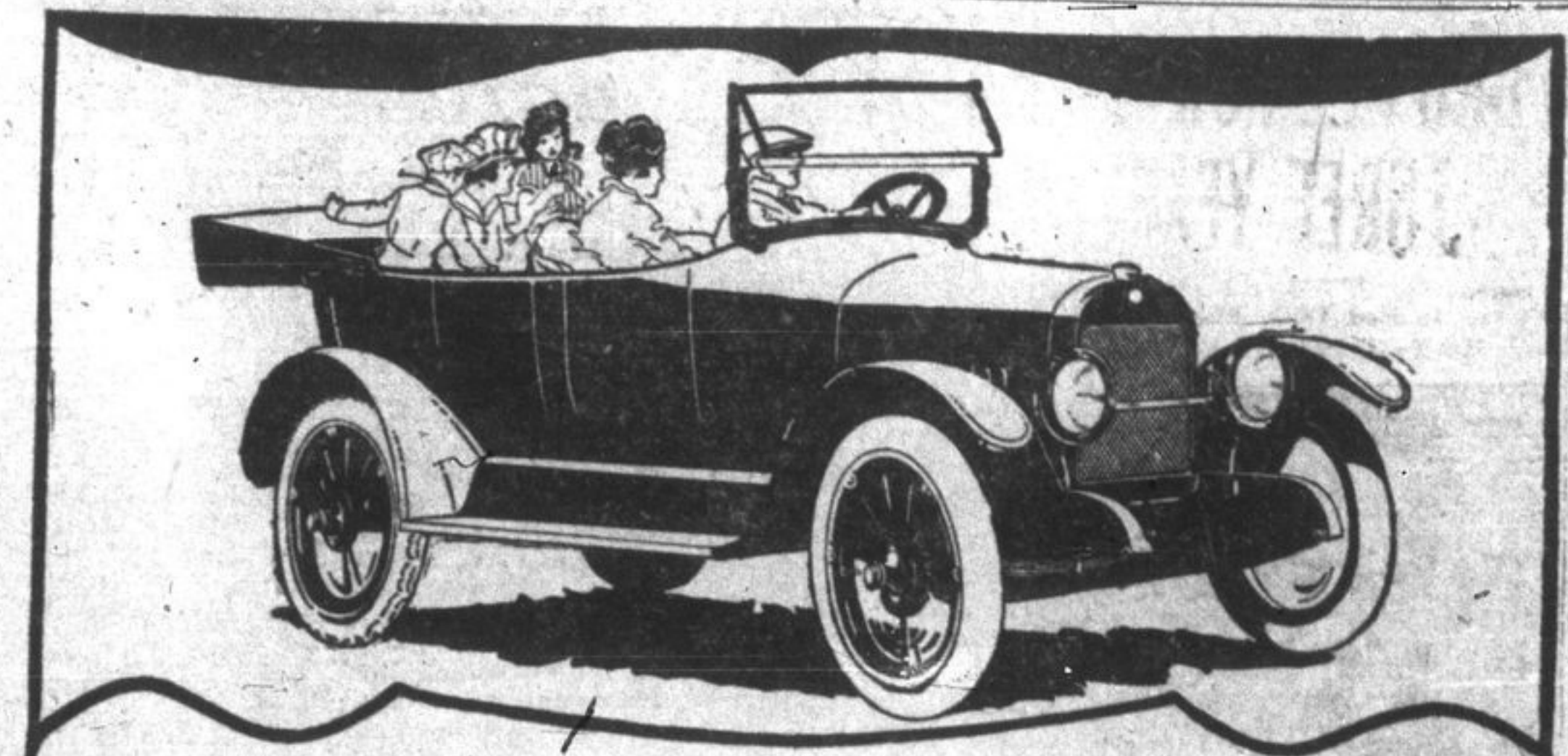
### Of the Economy of Gasoline Used by Motorcycle.

The Honda Manufacturing Company is furnishing the Italian Government with Indian motorcycles for army use and some recent tests on these machines picked at random from one shipment of 125 give a comprehensive view of the average economy of gasoline and oil consumption of the motorcycle.

The test is compulsory that out of 125 machines ready to be shipped, five shall be picked promiscuously for trials under the direct supervision of inspectors representing the Italian government.

A few days ago, five machines with side-cars were selected and given a distance of 60 miles over State roads. One machine covered the distance on a pint less than one gallon, another used an even gallon and the other three used a gallon and a pint each. The oil consumption in each case was exactly one pint. The showing in this test was remarkably good in that the machines were driven at a steady speed of 35 miles an hour throughout, which is too fast to obtain the best results from an economy standpoint. The cold weather also detracted from the efficiency of the machines.

A French summer resort is planning to establish a school for both theoretical and practical instruction in all trades connected with the hotel business.



## What Is Real Value

You can buy a four-cylinder, 5-passenger motor car at a lower price than the Gray Dort.

You cannot afford a car less good than the Gray Dort. You do not want service less complete.

Measure the service and satisfaction it gives you. Judge the power and quietness of its motor; the size and comfort of its body; its equipment; and the years of service you get from it.

All these things the Gray Dort gives you abundantly. And for heaping value adds economy of operation.

The touring car is \$1245; the Gray Dort Special—the car with added refinements and extra equipment, is \$135 extra; there are also a coupe, and a sedan. All prices f.o.b. Chatham and are subject to change without notice.

GRAY DORT MOTORS, LIMITED,  
Chatham, Ont.  
In the U.S.—Dort Motor Car Co., Flint, Mich.

# GRAY DORT

BOYD'S GARAGE

Kingston, Ont.

## Partridge Tires

Dependable Travellers

Tire troubles are the chief source of worry to every motorist.

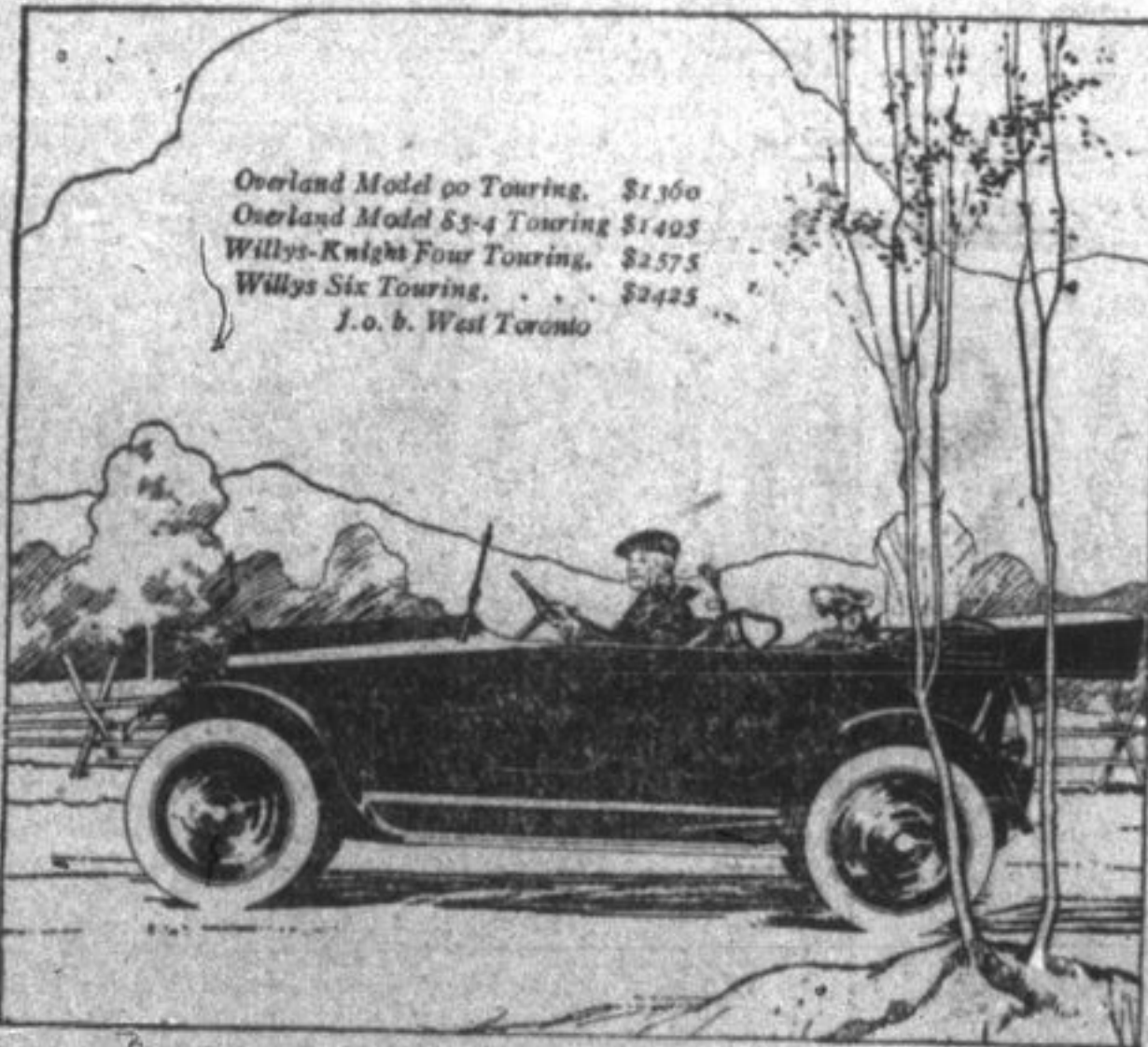
Motorists who equip their cars with Partridge Tires eliminate the risks of tire mishaps and obtain the greatest security and satisfaction they have yet known.



Made by The F. E. Partridge Rubber Company, Limited, Guelph, Ont.

EDWIN CHOWN & SON  
Kingston, Ont., Distributors

## Overland



Overland Model 90 Touring, \$1,500  
Overland Model 85-4 Touring, \$1,405  
Willys-Knight Four Touring, \$2,575  
Willys Six Touring, \$2,425  
J. O. B. West Toronto

### Oh Boy!

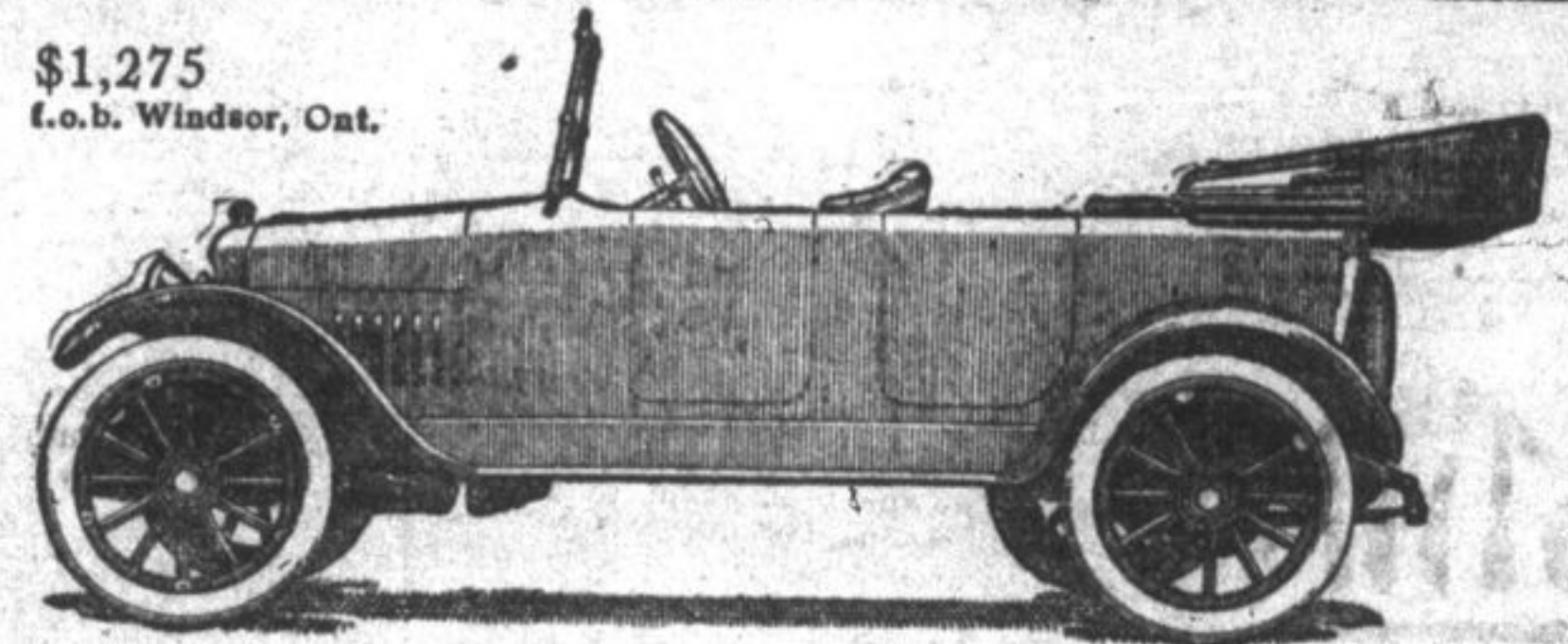
The owner of an Overland owns all out of doors. In his Model 90 he goes in comfort and with an enjoyment possible only because of the high quality, fine appearance and unflinching performance of his car.

Last month in Oklahoma, U. S. A., a stock Model 90 Overland car broke the world's non-stop high gear record, 4,370 miles in 7 days and nights in high gear, over bad roads with a gas record of 20.66 miles per gallon.

This durability and economy is an every-day advantage for Model 90 owners—order yours now.

OVERLAND SALES ROOMS  
Arthur W. H. Callaghan, Dist.,  
210-214 Wellington Street, Phone 1410

Willys-Overland, Limited, Head Office and Works, West Toronto.  
Branches: Montreal, Windsor, Regina



\$1,275  
f.o.b. Windsor, Ont.

## Maxwell—

### A Car of Assured Reliability

THE reliability of every Maxwell is assured by the volume produced. One model quantity production involves the investment of millions of dollars in special machinery, plants, laboratories, etc., before a single car is produced.

Therefore, the basic design must be right—right beyond any question—before this special equipment is installed.

And after production starts absolute accuracy in every part must be assured to prevent delays, wastage, hand-labor—things we can't afford.

No tools are too expensive—no precautions too elaborate—to assure this result.

This was our original plan and it has been consistently followed in producing the 300,000 Maxwells now on the roads of the world.

It is the reason why of Maxwell reliability—economy—uniformity.

A car made right to begin with saves you many a dollar even after you buy it.

MAXWELL MOTOR CO. OF CANADA, Limited, WINDSOR, Ont.



More miles per gallon  
More miles on tires

M. OBERNDORFFER,  
Kingston, Ont.

For professional entertainers a portable dressing-room made of fabric stretched over a folding frame has been patented.

Large fields of iron ore, similar to that of Cuba and the Philippines, have been discovered in the Dutch East Indies.

Current from a light socket will operate a saw machine for hotel kitchens which pares 40 pounds of potatoes in three or four minutes.