

# In the Automobile World

## Practical Points

### Stop Thief!

No method has yet been discovered of fooling the resourceful automobile thief if he is given time in which to work. However, by removing the timer cap from the magnets of the car so equipped the owner will give the thief something to think about. In most cars this is easily done, and it will take the most expert thief some time to get around the obstruction.

### Poor Valve Suction.

Misfiring is just as frequently caused by trouble in the valve gear as by poor carburetion or bad ignition. Owners should remember this in searching for the cause of persistent misfiring.

### Oil On Magneto.

Rubber is very quickly disintegrated by oil and at the same time it has a most unfortunate capillary affinity for the oil. For this reason it is very important to keep oil away from the rubber insulators that are used in connection with the conductors and

wires of all the circuits of the magneto.

### Priming Emergency.

When an emergency arises and it is necessary to prime the engine on the road, and no gasoline is available, a valve cap tied to the end of a piece of string and lowered into the gas tank will bring up enough of the liquid to prime one cylinder.

### Clean Your Spark Plugs.

Spark plugs require cleaning occasionally, especially since our motor fuel became the detested liquid it now is. The proper way is to take the plug apart and get all the black, carbonized oil and dirt away from the junction of metal and porcelain. The porcelain must not be roughened with sandpaper or a file, as this makes it more likely than before to accumulate carbon. The points should be brightened with fine emery cloth and the rest of the plug be treated with gasoline and a brush.

### Felt Washers.

Most car owners know that the use of felt washers under the iron washers in certain instances is a useful idea. The felt washer gives an elastic hold, allowing for expansion

or contraction, and may keep the threads or an over-tight bolt from stripping. However, most of them do not know that the ordinary corn and bunion plasters make very acceptable felt washers, and are always easily obtained.

### To Avoid Scoring.

When an engine has been standing idle for several days, so that it is reasonably sure that the cylinder walls are dry, it is a very sensible precaution to inject a couple of teaspoonfuls of cylinder oil into each cylinder by way of the petcocks and then turn the engine over a few times. This oil prevents any danger of scoring and also assists in getting good compression.

### To Dry Cooling Systems.

After the water has been drained out of the cooling system the engine should be run for a minute or two to evaporate all moisture remaining. This is practically true in cold weather, as a little water left in the system is very likely to freeze and cause trouble, in fact, locking the impeller if a water pump is used.

### Drain Cock Leak.

When a slight leak develops in a drain cock, such as the one that is located at the bottom of the radiator, a gentle tapping of the control with a hammer very often cures the trouble. Be careful, however, to make the taps gentle or some damage may result.

### Connecting Rod Bearing.

The owner is sometimes puzzled to know just how tight to make the connecting rod bearing. In general it may be said that if this bearing is tightened so that the connecting rod by reason of the piston weight will barely fall over from the vertical position when the bolts are fully tightened up it is correctly adjusted.

### Clear Vision.

Strong soapsuds made from automobile soap and rubbed on the glass of the windshield and allowed to dry will prevent fog or rain from obscuring the vision through the glass. Kerosene is sometimes used for this purpose, but it does not last as long as the above, and glycerine is also recommended.

### Watch Your Pedals.

The pads of the various pedals on the car inevitably become smooth from the constant pressure of the shoes. When an emergency arises and the foot is pushed down on this smooth surface a slip results that may spell disaster. To prevent this the pedals may be removed, placed in a vise and roughened with a diamond-nosed chisel and hammer.

### Loose Strips.

The metal strips that are used to bind the running board frequently

become loose because they have been fastened by round-headed nails instead of flat.

### Clear the Cooling System.

This is a good time of year to clean out the passages of the cooling system. After the year's service the walls of coils, tubes, the jackets and other parts of the system are probably covered with a deposit of scale, which prevents the passage of heat. This induces over-heating. Also the rubber tubing from the radiator to the engine often has an interior that collapses and blocks the passage of water.

### Removing Dust From Motor.

A painter's brush that is thick and soft will be found better than waste for removing dust from the motor. There are so many small projections that waste is generally a case of bad language and little else.

### Few Motor Trucks in Holland.

There are very few motor trucks in use in Holland. The greatest use of such vehicles is made by the War Office. Private industry and commerce possess only a small number of trucks, and these cannot be used at present. Most of them are about two-ton capacity.

### Riding the Tracks.

It is a common failing of motor car drivers to "ride the car tracks." As a matter of fact, however, the practice is dangerous and in addition wears ridges on the sides of the tire tread. The best advice that can be given is to avoid the car tracks, this applies also to ruts in the road.

### Thickness Gauge.

One of the most useful little weapons of the car owner is a thickness gauge. This consists of a number of blades hinged so that they can be opened like a pocket-knife. Each blade has a different thickness, and they can be used singly or in combination to determine whether various parts which should have certain clearances are properly adjusted.

### Rough Roads Are Most Disastrous.

Driving over rough roads at high speed is not only disastrous to the fabric of the tires on the car, but grinds down the tread of the rear casings to the fabric in a very short time. For this reason the motorist should never drive over rough roads at high speed unless absolutely necessary.

### In Striking a Rough Projection or Depression in the Road the Car Rebounds so that the wheels leave the ground entirely at times. This rebounding of the wheels permits the motor to spin the wheels faster. On striking the ground again the tires are spinning faster than the speed of the car calls for, so that a grinding movement is set up. By travelling slower the tires will not leave the ground, and therefore the tread will wear almost as long as on smooth road surfaces.

### Use Black Enamel to Prevent Rust.

In order to do away with rusting of parts beneath the hood, black enamelling may be resorted to with good effect. It is possible to get black enamel to-day which, when properly applied, looks little inferior to the baked on variety. Ordinary enamels which dry quickly are of little use, as they chip and flake off quickly. Parts to be enamelled should, if possible, be taken off and cleaned with a stiff wire brush. The enamel should be applied with a stiff varnish brush.

The enamel may take as long as a week to dry, and care must be used to have an atmosphere free from excessive dust; that means not to try it in the upper storey of a hay barn. Parts that may be enamelled to advantage include steel fan blades, pulley arms, brackets and elbows, nuts that are not often disturbed, exposed pieces of shafting, pinion wheel centres, operating rods, collars, etc. Even a cylinder casting may be so treated, as a good enamel will stand heat without blistering.

### SECOND-HAND CARS

They Are the Subject of Comment and Study.

The second-hand car question is a very live one to a great many people in the city and district, and the fluctuations of the market show its close connection with that of the retail trade in new cars.

This year there are more second-hand offered than ever before. This certainly cannot be any indication of pessimistic conditions, but is rather taken to mean that the buying of new models this year will be more lively than ever.

The price of second-hand cars has been the subject of much comment and study, but so far no one seems to have been able to correctly estimate just what effect a certain amount of depreciation will have on the price. One resident purchased a second-hand car last fall to sell in the spring. He put on a new top, new paint and generally put the car in order. He was offered \$425 for it in February. He decided to hold it. Another offer came a few weeks later, which raised the previous price \$25. To-day the price has slumped until the owner intends to retain the car for personal use. He would part with his bus for \$400.

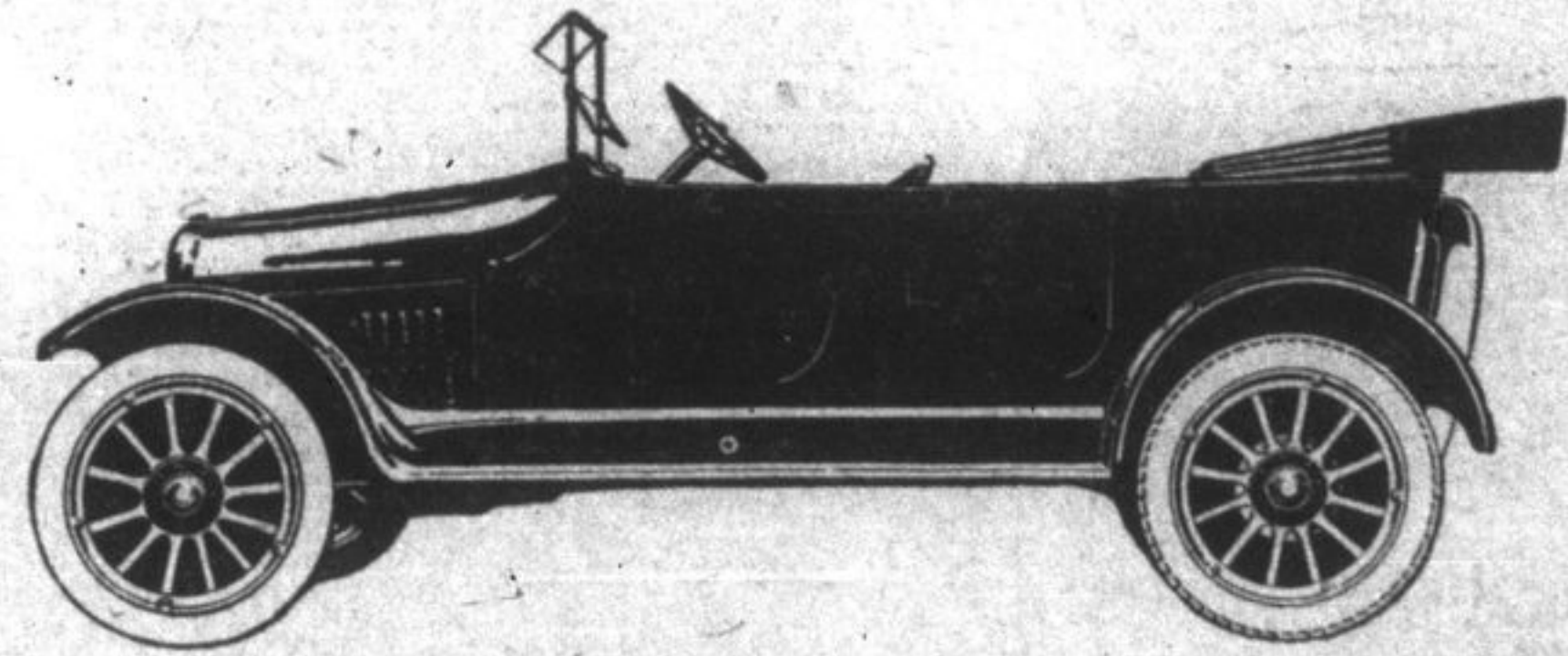
### What'll Pull a Ton?

The number of pounds of tractive force necessary to pull a ton over different surfaces clearly shows the ease against the earth road, even when kept free from ruts.

Force required.	To Pull Ton.
Quality of Road.	
Street railway track	20 lbs.
Asphalt pavement	25 lbs.
Stone or wood pavement	30 lbs.
Macadam (good)	35 lbs.
Macadam (poor)	50 lbs.
Gravel, good hard road	75 lbs.
Clay, good hard road	100 lbs.
Earth, loose	300 lbs.

From the above it will be seen

# GRAY DORT



## For Many Reasons

ONE owner praises the economy of the Gray-Dort. The low consumption of fuel. The long mileage from tires.

Another finds in this car the power and speed he needs without costly weight.

A third talks constantly of value. A staunch, handsome, roomy five-passenger car is unusual value at the Gray-Dort price.

Women, particularly, appreciate the easy driving and comfortable riding of the Gray-

Dort. Its beauty, too, attracts their admiration.

You have already heard much of the Gray-Dort. Go now and ride in one. Ask the Gray-Dort dealer for a demonstration. He will gladly give it.

The touring car is \$1245; the Gray-Dort Special—the car with added refinements and extra equipment, is \$135 extra; there are also a coupe, and a sedan. All prices f.o.b. Chatham and are subject to change without notice.

GRAY-DORT MOTORS, LIMITED  
Chatham, Ont.  
In the U.S.—DORT MOTOR CAR CO., Flint, Mich.

BOYD'S GARAGE

Kingston, Ont.

# Partridge Tires

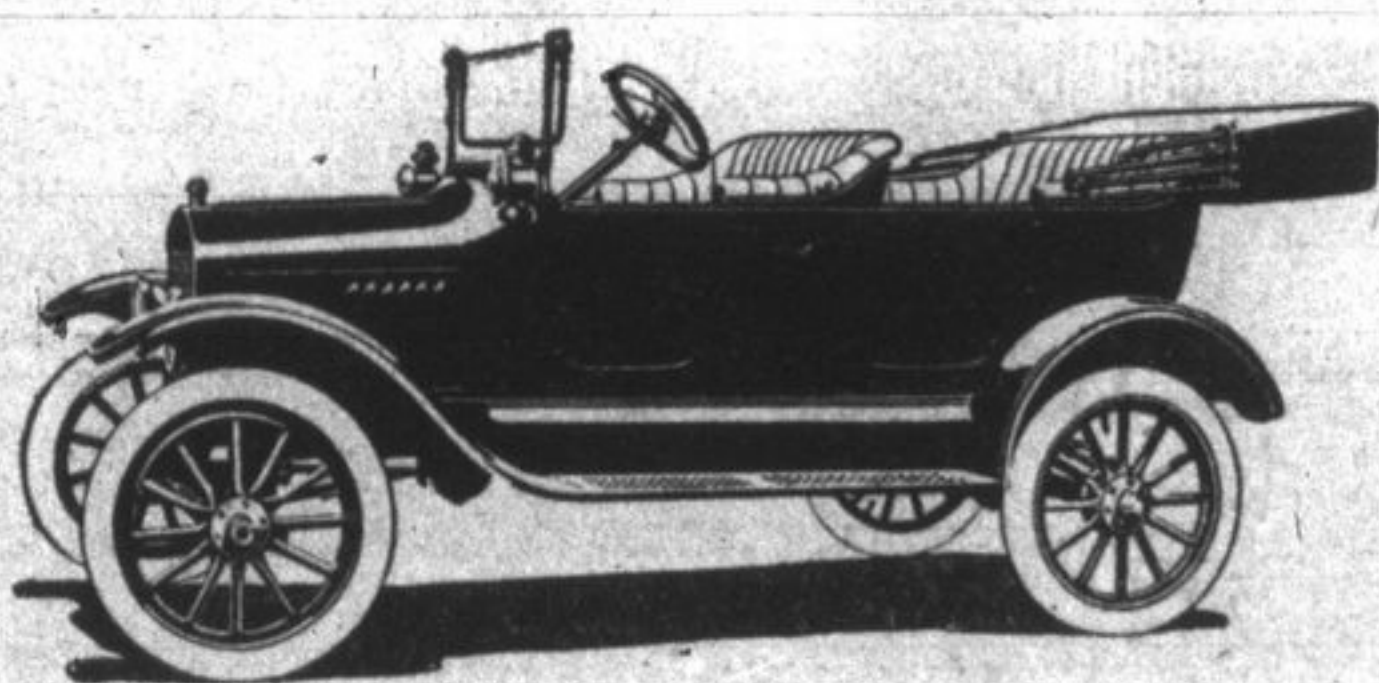


## THE MOTORISTS' VICTORY BONDS

Made by The F.E. Partridge Rubber Company, Limited, Canada, Ont.

EDWIN CHOWN & SON  
Kingston, Ont., Distributors

# FORD Cars



The car that does the work for the least upkeep.

First, in gasoline consumption.

Second, in oil consumption.

Third, but not least by any means, tire consumption.

A fact you never thought about perhaps, but the Ford car has more rubber on it in tires than any other car made in accordance to weight.

### PRICES:—

Touring	\$690.00
Sedan	\$1175.00
Roadster	\$660.00
Coupe	\$975.00

F.O.B. FORD  
Before Purchasing a Car, See

# VanLuvén Bros.

We have several second hand cars of different makes

## Maxwell—a car improved each day



More miles per gallon  
More miles on tires

THERE is nothing like doing one thing year after year because it always results in doing the thing well.

This is the underlying thought in every Maxwell.

It is why 300,000 Maxwells have been built on the original chassis plan. Each day this car grows better. Each day it is improved somewhere.

There never has been a radical change in design. There never has been a departure from the original idea.

Still there have been more than 1000 improvements made in this car since the first one was built.

Every time a chance was seen to make it better the improvement was made.

That's why a Maxwell runs on and on in almost endless mileage; why it grows better as it grows older; why it stands the moods of the careless driver.

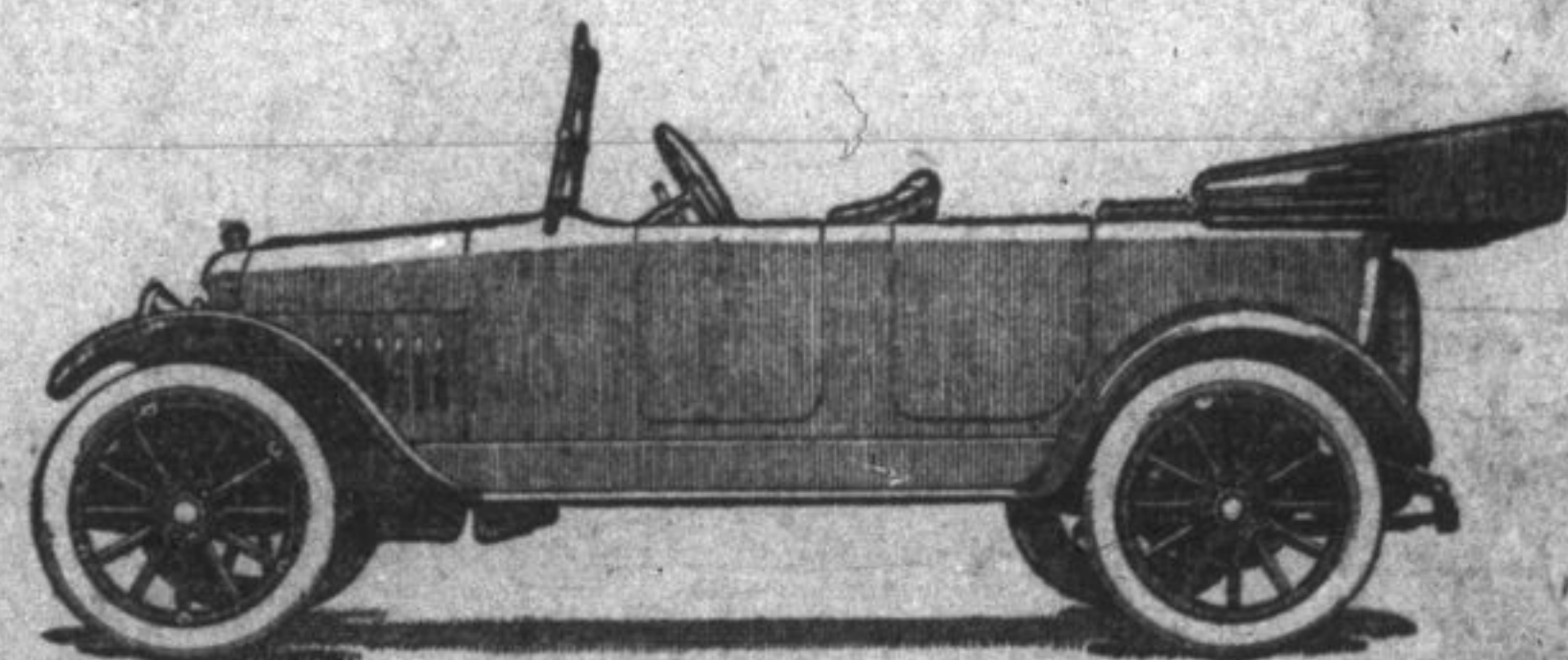
No one has ever criticized the Maxwell on the grounds of reliability.

No one can criticize it on the grounds of good looks.

For there have been 24 recent improvements in its appearance.

See the Maxwell today and then get your check book ready.

THE MAXWELL MOTOR CO. OF CANADA, Limited, WINDSOR, Ont.



M. OBERNDORFFER

124 Clarence St.

Kingston

that a horse or truck can draw on a common macadam road more than three times as much as on a gravel or earth road.

South Australia, with an area of more than 240,000,000 acres, has only slightly more than 5,000,000 under cultivation.

Electricity is the only agent that will thaw frozen water pipes without disturbing the ground in which they are buried.