

Partridge Tires
Sentenced to do 10,000 miles
They will long outlive their term
Made by The F.E. Partridge Rubber Company Limited, Guelph, Ont.
EDWIN CHOWN & SON
Kingston, Ont., Distributors

A HIGHER SPEED LIMIT

LEGISLATION BROUGHT IN TO RAISE MAXIMUM IN PROVINCES.

To Make 20 Miles Per Hour On Cities and 25 Miles An Hour In the Country the Limit.

Again the speed question is up for discussion in Parliament but, as it has passed in committee it looks as if the proposed amendment will be passed in the House and the speed limit raised to 20 miles an hour in cities and 25 miles an hour in the country.

This matter is a most serious one and the way it is popularly discussed clearly indicates that some experienced motorists do not understand the law. The limit is simply a maximum. A person under certain circumstances could be arrested for exceeding the speed limit by running down Princess street at ten miles an hour. This fact is too often lost sight of.

The Motor Vehicle Act was passed with a view to restricting the speed of automobiles within limits of safety to themselves and pedestrians. It was decided at the time that no car could run over 15 miles an hour in the cities and 20 miles an hour in the country and the driver have full control of the car and be able to stop in a short enough time to avoid accidents. Better braking equipment and a realization that the limits set were too low, caused the present agitation for an increase. The maximum will probably be increased but the law reads the same.

The law distinctly points out that a motor vehicle must be driven at a speed which is consistent with absolute control of the car and safety to others using the highway. This speed is not to be more than the maximum set. Therefore a person who drives unreasonably fast through dense traffic, even though his speedometer does not touch the maximum allowed is guilty of a breach of the law.

The new regulations read: "No motor vehicle shall be driven upon a city, town, village or police village at a greater rate of speed than 20 miles per hour; nor upon any highway outside of a city, town, village or police village at a greater speed than 25 miles per hour, not at a street intersection or curve where the driver of the vehicle has not a clear view of approaching traffic at a greater speed than 10 miles in a city, town, village or police village, or 12 1/2 miles outside a city, town, village or police village, but the council of a city, town, or village, may, by by-law, set apart any highway or any part thereof on which motor vehicles may be driven at a greater rate of speed for the purpose of testing same, and may pass by-laws for regulating and governing the use of any such highway or part thereof for such purposes.

Before Starting.

Don't attempt to start a motor with any of the transmission gears in mesh. Have gear shift lever in neutral.

Don't tamper with your carburetor unless you know it is out of adjustment and not even then unless you know just what you are doing.

Barriers extending along the ground from one or both sides of a recently patented roadway gate enable an automobilist to open or close the gate merely by running his car over them.

PUT ON A MIRROR.

Law Will Probably Make It Compulsory to Equip With a Mirror.

In a bunch of amendments to the Motor Vehicle Act which are being considered in Toronto with a view to their adoption throughout the province comes one which reads: "Every motor vehicle shall be equipped with a mirror securely attached to it and placed in such a position as to afford the driver of such motor vehicle, while driving or operating the vehicle, a clear view of the roadway in the rear or of any vehicle approaching from the rear."

There can be no question as to the practical value of these mirrors and while no person desires to be forced into doing an act, the law should be of value in forcing more owners to properly equip their cars.

FAST DRIVING OUT OF STYLE

Local dealers are convinced that the speedsters are giving way to sane drivers in the purchasing of new cars. A few years ago the question about a car was, "How fast will she go?" Now such a question is never heard and beyond some intimation that there is an abundance of power for hills and heavy roads, the power of the machine is not considered as much as comfort, reliability, maintenance, etc.

MAY PAY A REWARD.

By-Law Can Be Passed to Help Fight Automobile Stealing.

The fight against automobile thieves has never been taken up in Kingston or this district, probably because few cars have been stolen. The lesson of other places should be learned, however, and motorists should take every precaution to prevent anyone taking away their car for a joy-ride or a deliberate attempt to purloin it with a view to its sale either as a car or in pieces in some other part of the country.

The situation is serious as even to Kingston several thousands of dollars worth of automobiles are taken illegally every year and when returned—if ever found again—are more or less damaged. The case of R. J. Reid's splendid big McLaughlin last year is typical of the possible loss which can be caused by a motor thief.

Locks of all descriptions are being invented. There are dozens offered for sale for every make of car. Some are good and will protect your car, but a great number are of little value.

The provincial government's attention has been drawn to the matter and it is probable that at the present session authority will be granted for by-laws to be passed by the councils of all municipalities in the province to pay rewards on the conviction of persons stealing motor vehicles. The proposed amendment reads:

"By-laws may be passed by the councils of all municipalities for paying, on the conviction of the offender and on the order of the judge or police magistrate, before whom the conviction is made, a reward of not less than \$20 to any person who pursues and apprehends any person stealing a motor vehicle within the municipality. The amount payable shall be in the discretion of the judge or police magistrate but shall not exceed the amount fixed by the by-law.

Insurance companies which are now issuing policies which protect the car owners from theft as well as other trouble give a lower rate to owners whose cars are equipped with a locking device. It should be remembered, however, that such locks are up to the standard approved by the insurance companies, as the companies demand a lock which can not be rendered useless in slightly under thirty minutes.

Increase Is Indicated

The automobile trade goes ahead by leaps and bounds and already thousands of licenses have been issued in Ontario for the coming year. With so many farmers buying motors 1919 is expected to be a record in the trade and eclipse all previous records by many thousands.

The growth each year in Canada is indicated by the following table:

1903	220
1904	555
1905	553
1906	1,178
1907	1,500
1908	1,700
1909	2,400
1910	4,200
1911	11,339
1912	16,266
1913	23,700
1914	31,724
1915	42,340
1916	54,375
1917	84,353
1918	109,400

1918 MARKERS NOW ILLEGAL

Last year motor vehicle license markers are now illegal. Motorists driving cars without the new yellow and black 1919 license plates are violating the law and due to receive one of those little notices to appear before Magistrate Farrell and explain the cause of the delay in contributing to the government for the privilege of using the roads. The police are now on a still hunt for you if you take a chance with a last year's license number.

THE Gray Dort is a different light car. Different in the important things—in the power and quietness of its motor, in the size and comfort of its body, in its economy. Different in all the important little things too—in its equipment, beauty of line and finish, freedom from trouble, ease of handling. Yet the price is less than that of most light cars—and little more than those that offer so much less.

The touring car is \$1245; the Gray Dort Special—the car with added refinements and extra equipment, is \$135 extra; there are also a coupe, and a sedan. All prices f.o.b. Chatham and are subject to change without notice.

GRAY DORT MOTORS, Limited, Chatham, Ont.
In the U.S.—Dort Motor Car Co., Flint, Mich.

GRAY DORT

BOYD'S GARAGE :: Kingston, Ont.

Oxy-Acetylene Welding
Oxy-Acetylene Cutting
Oxygen Decarbonizing Automobile and Gas Engine Cylinders

Why send your work out of Kingston when you can get it done right here at

Davis Dry Dock Company

Who have an excellent plant for such work.

Bring your work along and be convinced.

All kinds of machine, automobile, boat work and engine repairs

Ford
Announcement

Electric Starting and Lighting System

- Consisting of Generator, Starting Motor and Storage Battery.
- An electric system made for Ford cars by the Ford Motor Company of Canada in their own factory; built into the Ford motor which has been re-designed for the purpose.
- Controlled from a complete instrument board on the cowl.

Standard Equipment on Sedans and Coupes

All closed models now have electric starting and lighting system as Standard Equipment.

Ford Sedan \$1175 Ford Coupe \$975
(Including Ford Starter and Lighting System)
Prices are f.o.b. Ford, Ont., and are subject to War Tax.

Ford Closed Models will, for a time, take the entire production of Starting and Lighting Systems.

By June 1st, however, Ford Touring Cars and Roadsters will be supplied with Starting and Lighting as *Optional Equipment* at an extra charge.

Samples of the Ford Starting and Lighting System are now on exhibit at all Ford Branches. In the near future we also expect to be able to show a complete sample outfit. You are invited to call and inspect it.

Van Luven Bros, Dealers, Kingston
G. H. RICHARDSON TAMWORTH
J. A. GOODFELLOW PARHAM

A Maxwell Grows Better the More You Drive It

THAT is the test of anything good. The more you use a good watch the better it runs. The older your friends grow the better you like them.

And nothing is more pat on a Maxwell than this.

Hardly a day goes by that some Maxwell owner doesn't take his pen in hand and write that he is now passing a mark of 30,000 miles or 20,000, or 50,000.

To purchase such a man's Maxwell from him would be like trying to buy an heirloom from a rich man.

But these Maxwells of today are far better cars than those of yesterday.

For it is the policy of the Maxwell Motor Company to keep on building and building on the original chassis plan set down 5 years ago.

300,000 Maxwells have been built on this program.

1000 refinements have been made since the first car was built.

Each new Maxwell is better than yesterday's.

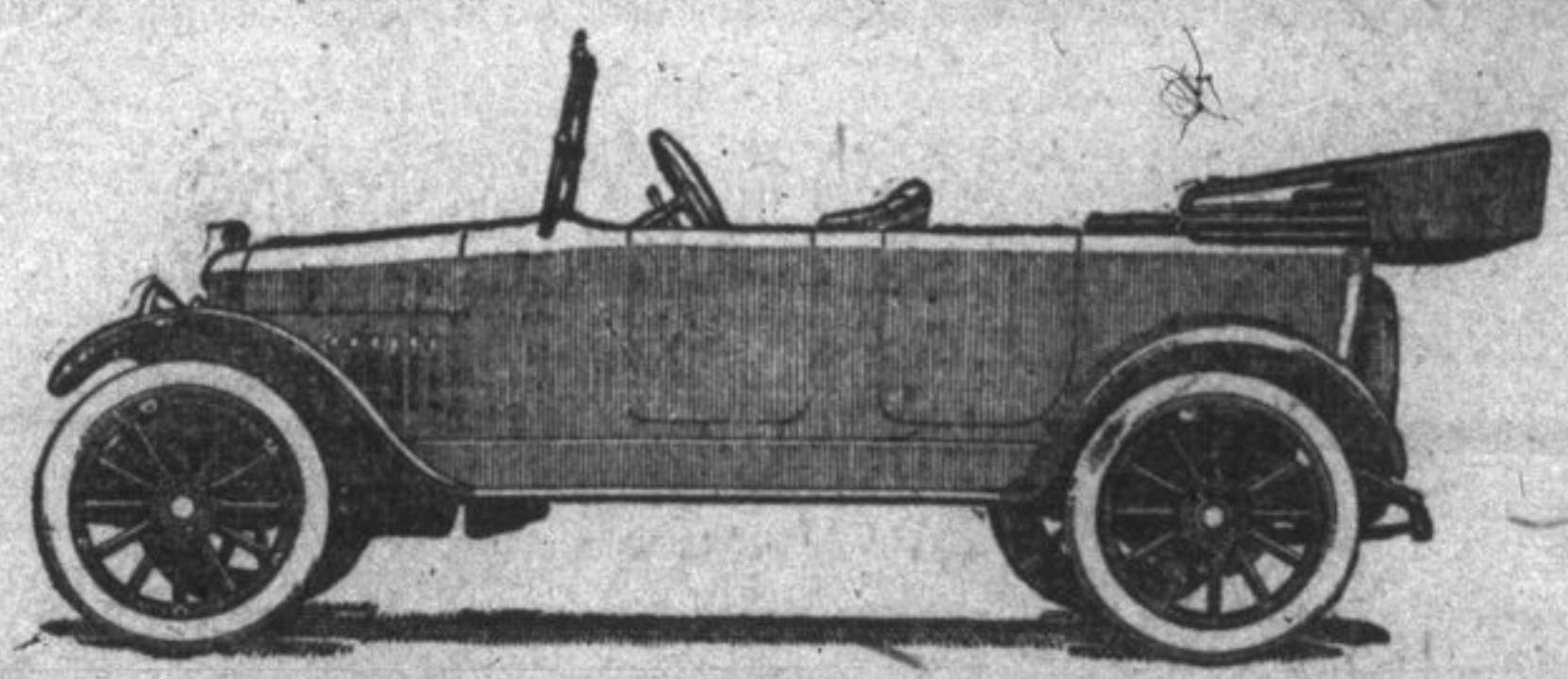
For doing one thing always results in doing it well.

This Maxwell you see today is so vastly improved in appearance that you may think it a new model.

But it isn't. Just a better looking Maxwell. And a better car.

THE MAXWELL MOTOR CO. OF CANADA, Limited, WINDSOR, Ont.

M. OBERNDORFFER
124 Clarence St. Kingston



A lighthouse in England has been given a lamp that can be lowered almost to sea level for use in foggy weather that would make it invisible in its regular position.

A Swiss inventor has brought out an aluminum pencil for writing on glass or porcelain, producing marks that can be etched with acid or hardened to resemble inlaid silver.

High speed is the claim of its inventor for a new sled for coasting, consisting of two runners, a narrow board across them and a handle to help support a standing rider.