

**Beauty Hides
a Multitude of Virtues
in the Maxwell**

THIS time beauty conceals the virtues—not the “sins.” For the new “garments” of the April Maxwell are severely pretty, simple, modern, and the kind that make you want to possess one.

But underneath this “robe of beauty” you’ll find a sound, rugged, compact, everlastingly-on-the-job chassis that now has a record manufacturing run of 300,000—all alike.

For in 5 years that number of chasses have come out of the 8 great Maxwell plants—each built on the same pattern; each one better than the last.

To date more than 1000 refinements, big and little, have been made in the Maxwell. The plan is to improve and improve—but not to change in any radical way the original chassis.

Thus you’ll understand why a Maxwell never quits running; never grows wobbly and loose with age; never forces the garage man to send you a staggering bill for mechanical treatment.

Now you get a far better Maxwell than ever before. Which would be sufficient for the average buyer. But more than that you’re getting a Maxwell that the touch of artistic magic has made into a car of rare beauty.

It doesn’t take an art critic to pass judgment on the beauty of an April Maxwell. Anyone with fair eyesight gets it in a jiffy.

MAXWELL MOTOR COMPANY OF CANADA, Limited
WINDSOR, ONT.



More miles per gallon.
More miles on tires

M. OBERNDORFFER,
Kingston, Ont.

GRAY DORT

Ask—and be Convinced

FOR three years we have been telling the motorists of Canada what we *knew* about the Gray Dort—we who created and built it.

Thousands were convinced—and bought Gray Dorts as fast as they became available.

Thousands were sceptical—rode in Gray Dorts and are now our enthusiastic friends.

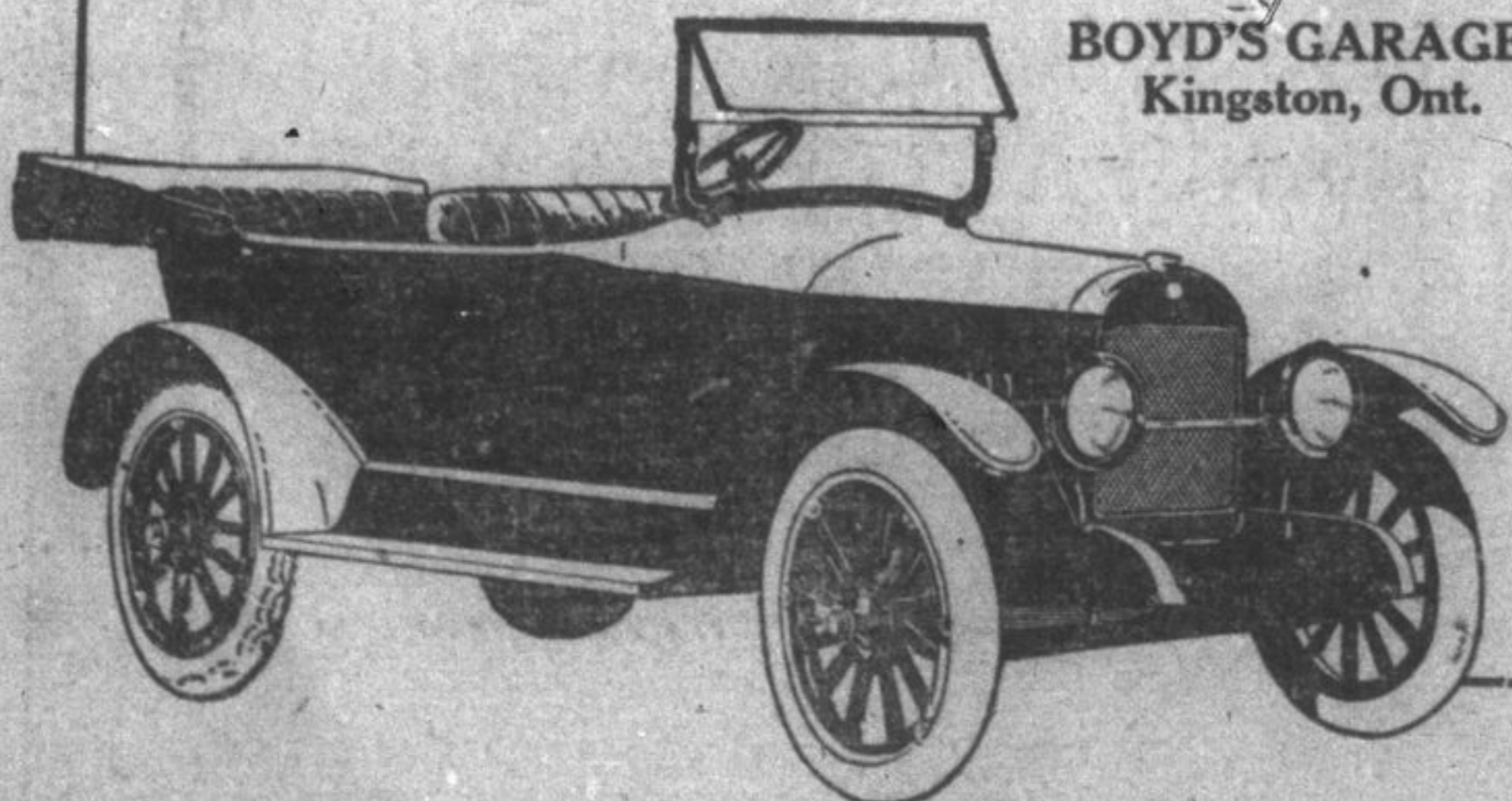
To those who still doubt, we say—take a Gray Dort owner and be convinced.

Ask him about the motor—that puts at your command a smooth, quiet flow of real power—Instantly. Ask him about the comfort of this generously-large light car. Ask him about equipment—about economy of tires, gasoline. And the longer he has had his Gray Dort, the more enthusiastic he will be.

The touring car is \$1245; the Gray Dort Special—the car with added refinements and extra equipment, is \$135 extra; there are also a coupe, and a sedan. All prices f.o.b. Chatham and are subject to change without notice.

GRAYDORT MOTORS, LIMITED
Chatham, Ont.
In the U.S.—Dort Motor Car Co., Flint, Mich.

BOYD’S GARAGE
Kingston, Ont.



How To Repair Minor Tread Troubles
When the rubber tread becomes separated from the fabric near a

cut the cavity surfaces should be so that cement can dry before all well cleaned with gasoline and re-lining the walls to come together. Give three consecutive coats of rub. Then a well vulcanized patch over the cement, propping the parts open cut will make a durable job.

Newest Notes Of Science

A patent has been granted for a table fountain from which the water is forced by the expansion of air heated by an incandescent lamp in a tight vessel.

Instead of a leather belt seven inches wide a steel band only three inches in width is being used to drive machinery in a large coal mine in Europe.

An inventor has brought out a long handled wrench that fits all sizes and types of grease cups found on motor vehicles and has several additional uses as well.

Japanese business interests are planning the extensive development of the now important port of Omiato, at the northern end of that country’s largest island.

An effective alarm to warn of the fall of rain or snow can be made by stretching silk between wires in an electric bell circuit as silk conducts electricity when wet.

To compress air an Italian has invented an engine without any fly wheel, a piston driven back and forth in a cylinder by oil fuel, pushing the air ahead of it at each end.

Experimenters at the Missouri College of Agriculture have succeeded in producing chickens with perfectly white shanks, heads and plumage, which yield eggs with white yolks.

To enable blind persons to tell temperature a Frenchman has invented a thermometer in which ascending mercury depresses a balanced tube along a scale carrying embossed marks.

Department of agriculture experts have been experimenting with the semiarid farms of mountainous regions of the Southern states to learn how to increase their productiveness.

Where high power electrical transmission lines cross roads in Norway networks of wire are erected to protect persons using the highways should heavily charged wires break and fall.

Attached to a recently patented mailing cover for catalogues, calendars and other advertising matter is a card with which a recipient can acknowledge receipt of the cover’s contents.

An English inventor’s safe is fastened with a wire stretched to respond to a musical tone produced by any instrument, its vibrations affecting electric mechanism that operates its lock.

For window apparatus has been invented by which dressed figures are made to travel from one side of a window to the other, at the same time turning around fully to exhibit their costumes.

According to a distinguished English scientist there is some form of radiation from chalk and granite cliffs, possibly electrical, that causes climatic differences in places in the same vicinity.

A recently patented face mask for protection against disease consists of a closely fitting wire gauze shield for the nose and mouth, suspended from spectacles with large lenses that cover the eyes.

Tests by a Swiss city of the relative efficiency of arc and metallic filament incandescent lamps for street lighting were decided in favor of the latter, chiefly because more agreeable to the eyes.

For lighting safety islands at street intersections the United States bureau of mines has recommended a heavy bell shaped iron casting with slotted sides, through which pass rays from an electric lamp.

The Norwegian inventor of the first reinforced concrete vessel to navigate the open sea has built a reinforced concrete floating dry-dock and has a contract for another with a lifting capacity of 7,000 tons.

An incandescent lamp that does not develop heat, for which a patent has been granted, has a number of filaments connected to a switch, so rotated by a motor that each is illuminated but a fraction of a second.

The available water power of European Russia, including Finland, the Urals and the Caucasus, has been estimated by government experts at 30,000,000 horsepower, of which scarcely 250,000 horsepower has been utilized.

ELECTRIC SYSTEM INSPECTED.

Ensure Season’s Driving by Making Sure It Is “Fit” Now.

Perhaps the most exasperating experience a motorist has is having his car tied up for repairs to the electrical system at the height of the driving season,” declared a well-known motorist a few days ago. “I should know, because that was my unhappy lot last July. Like many another motorist, I neglected to have the electric system of the car gone over in the spring—look a sporting chance—and lost. Believe me, no repeats of that kind for me. Yesterday I ran my bus up to a service station. A factory-trained expert went over the system in no time. At a nominal cost I learned that the car was electrically O.K. for the season—and so insured myself against a repetition of my mid-summer tie-up, to say nothing of the cost.”

The foregoing is quoted because it is typical of many motorist’s experience, and therefore as “a word to the wise.”

Lighting Units.

Do not mistake simply a burned out lamp filament for trouble in the lighting system. Two often the driver will examine the bulb that does not light, and, failing to notice the broken filament, will cause himself a great deal of trouble tracing the connection throughout the system, when in reality there is nothing but the lamp itself to blame. If you cannot see plainly whether the dark bulb is broken or not, try a known good one, and if that, too, fails to light it is time to delve deeper into the wiring intricacies.

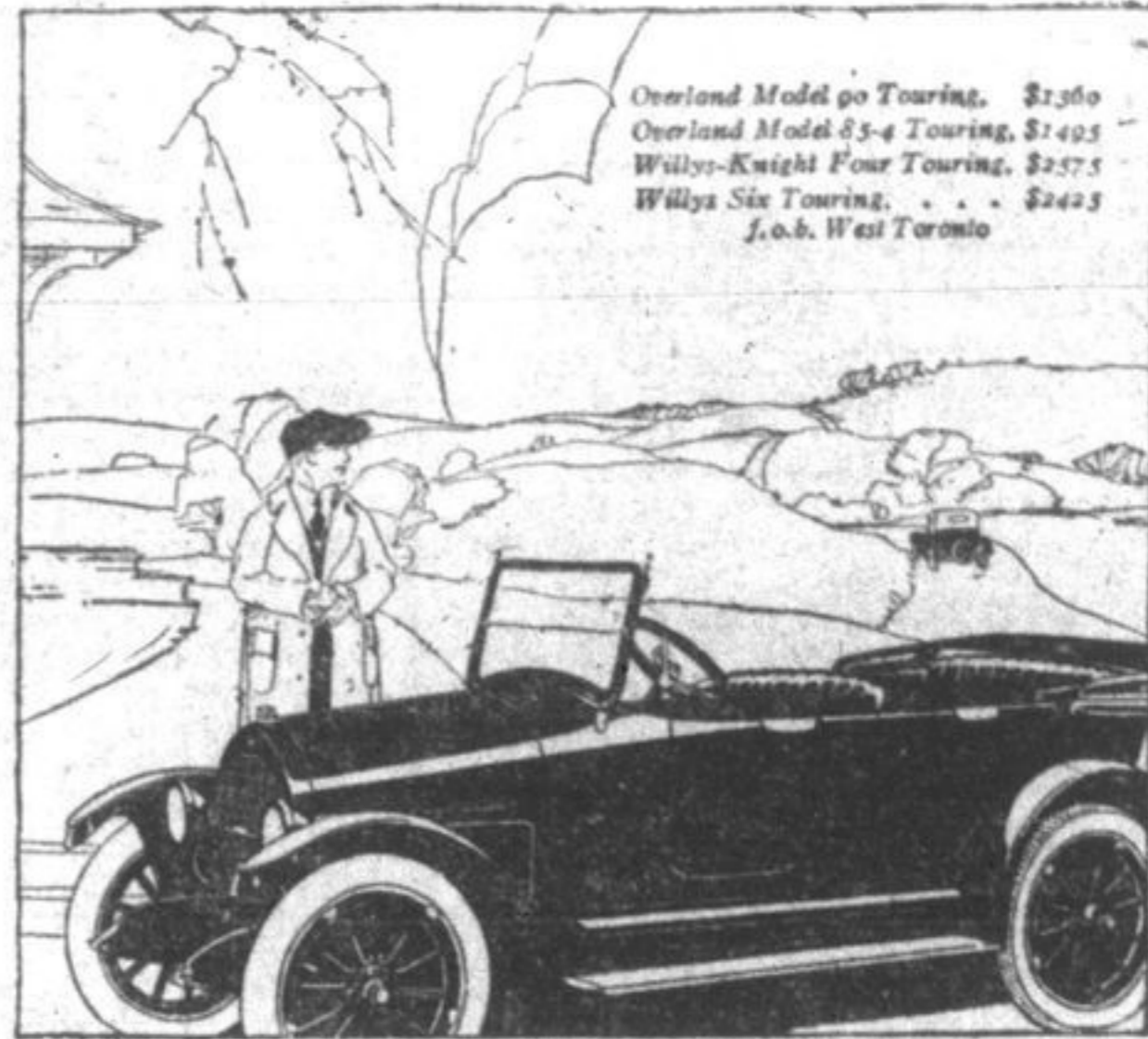
Use Chemical Carbon Removers With Care.

Great care should be taken when using liquid carbon removers that none of the liquid gets past the piston rings into the crankcase with the lubricating oil. It takes only a small amount to destroy the lubricating quality of cylinder oil.

Cheap Oil Is Expensive Eventually. Lubricating oil that is sold for a small price cannot have the quality that great care and laborious at-

tion affords. Cheap oil has not the resistance to chemical changes which produce sulphuric acid, that more carefully made oil possesses, with which it comes in contact.

Overland



Overland Model 90 Touring, \$2350
Overland Model 83-4 Touring, \$1425
Willys-Knight Four Touring, \$2275
Willys Six Touring, \$2425
J. & B. West Toronto

“The Call of the Road”

When you take the highway this spring you want a car that permits you to enjoy your outing. It must take the roads efficiently and with comfort, operate at low cost and inspire pride in its appearance. Model 90 is just such a car. The appreciation of Overland owners has built up manufacturing methods that make possible the unusual value of Model 90 at its economical cost. Get your Model 90 now.

OVERLAND SALES ROOMS
Arthur W. H. Callaghan, DIST.
210-214 Wellington Street Phone 1410

Willys-Overland, Limited, Head Office and Works, West Toronto, Ontario
Branches: Montreal, Winnipeg, Regina

A HOT SPOT Chalmers wrings the power from gas

AS any one knows there is just so much power in a gallon of gas; and the great trick in a gas engine is to get all the power out and convert it into mileage.

Yet do you know how little power actually is taken out of gas by the average car? And how much power goes out the exhaust?

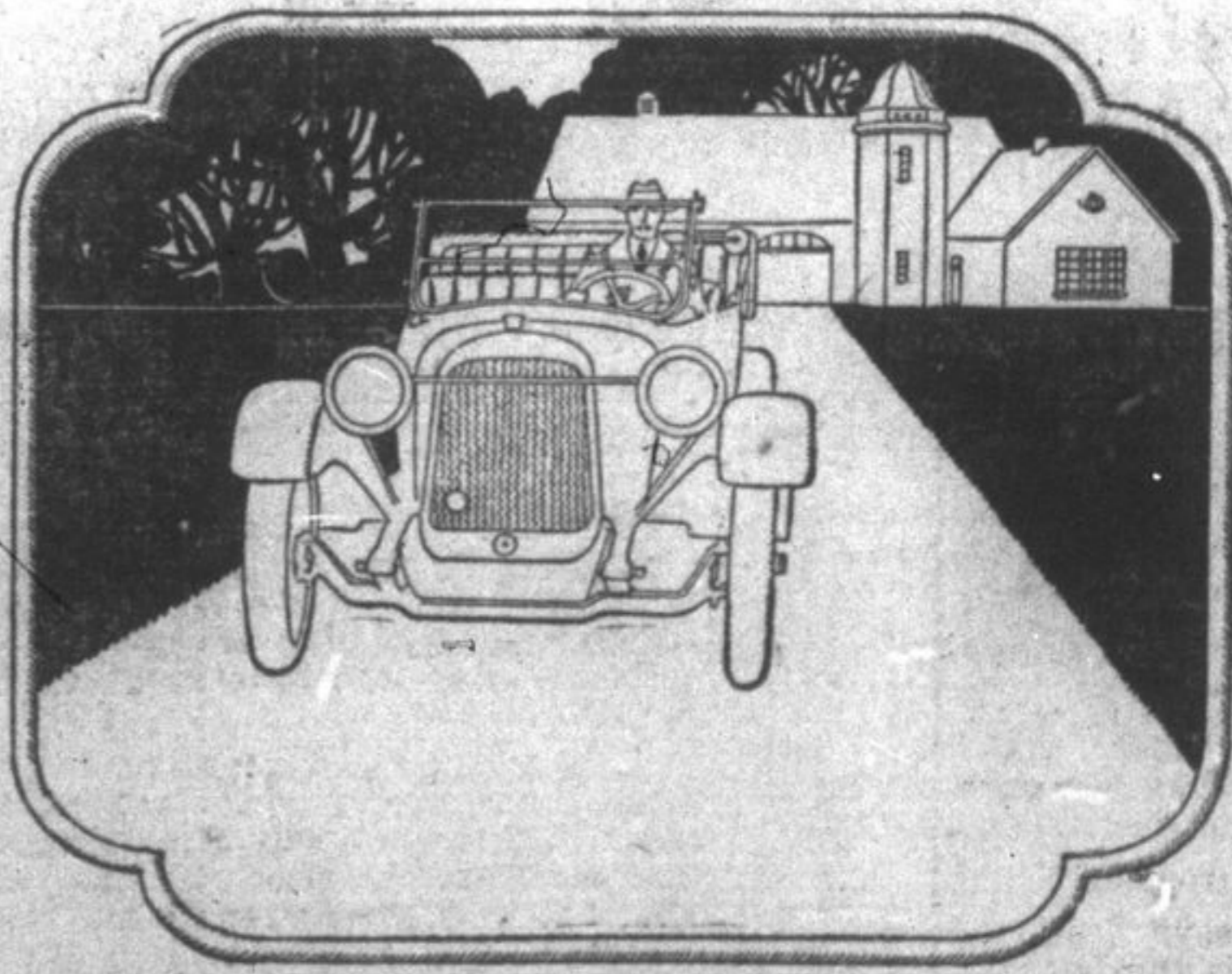
Ask any motor car engineer.

A Chalmers engine simply wrings power out of gas. Its famous Hot Spot “cracks up” the gas, just as constant chewing of food prepares it for good digestion before swallowing.

To get power out of gas the gas has got to be “cracked up.” Then it has to be placed into the cylinders in a “dry” condition. This the great Ram’s-horn does to a work of engineering art.

You can tell how true this is the minute your foot touches the accelerator button of a present day Chalmers and you get the feel of that throbless, frictionless power that means so much to your peace of mind, your tires, your bank balance and your self satisfaction.

CHALMERS MOTOR CO. OF CANADA, Limited
WINDSOR, ONT.



M. OBERNDORFFER
124 Clarence St. Kingston, Ont.