

Penetrating First Line Defences for Hints of Fall Fashions



By Maude Hall.

The chronicler of the doings of Dame Fashion must be a privileged character, for it is only by special favor that one is able to penetrate the great defences of secrecy with which famous designers surround their creations for an advancing season. To have their ideas discounted before they are expressed in actual models is something against which the makers of fashion must protect themselves, for in the world of dress, as in the world of finance, ideas are money.

It is no violation of confidence, however, to say that simplicity will be the keynote of the coming season's styles, for eternal simplicity is the price of unquestioned smartness. Many of the frocks for early fall wear will be a surprise because of their ma-

terial, for more than ever will the absence of wool be noted. Pure woolen fabrics are going to demand prices that are beyond the average pocket book.

In their place will be substituted charming silks and crepes, to say nothing of satins of sufficient weight to make them appropriate for wear very late in the autumn. Later the question of real winter materials will be solved, but there are many details yet under consideration.

Well-dressed women are sure to like the new georgette satins. They may be used in the development of one-piece dresses for all-day wear and semi-tailors. They are heavy but soft and are guaranteed not to roughen under continued usage. Quite a pretty model in Marie gray geor-

gette satin is made in overdress effect. The foundation is of satin figured tafeta, made with a plain skirt and waist. The overdress closes on the left shoulder, and has large armholes, the deep gorge being shipped under the back gore, leaving a panel effect. Fancy buttons trim the inserted pockets and the square neck has a collar of self-material. None of the advance fashions lend themselves to making-over so congenially as do the overdress and redingote effects, and this fact will add to the popularity of these models.

Exceedingly smart is a black and white broken check combined with black georgette satin. The overdress is fashioned of the check and has the panel front accentuated by the rows of buttons appearing on either side from neck to hip-line. A collar of

white organdy finishes the low neck and the long, close-fitting sleeves are trimmed with buttons. The fulness at the waistline is held in with a belt of the check fabric finished with bands of white silk and heavy fringe. The foundation consists of a front-closing underbody of lining with the georgette satin sleeves and a two-piece skirt of lining, with a front panel and deep hem of satin.

Certain of the great dressmakers are introducing bits of dazzling embroidery upon frocks of dark hued gabardine, tricolette, jersey, etc. A pretty model in very dark blue jersey has a plain two-piece skirt and a blouse with round neck, the adjustment being effected at the left side and on the left shoulder. Around the lower edge of the bodice is a border of self-color soutache braid, but on

the front of the blouse there is a bit of corbeau silk on which are superposed discs of bright red, orange yellow, grass green and sky blue, the whole being outlined by a raised stitch which is sometimes white, sometimes yellow, red or blue. To describe it properly would require the picturesque of an Oriental vocabulary or the brush of a Bakst.

It would seem that the designers are resorting to more unusual methods than ever to secure original ideas in trimming. For example, an afternoon frock in dark brown cloth depends largely for its individuality upon a collar, belt and deep cuffs of satin worked in the colors and patterns found in India rugs and shawls. The skirt has a tunic draped in square effect at the back and in points at the side.

Rows of chenille braid in imitation of French knot embroidery make most effective borders for the lower edges of long pelisms. A dark blue satin embellished in this way has the upper rows of the stitch punctuated with diamonds of bold embroidery with bright green fleur-de-lis in the centre of each diamond. The waist fastens at the back with velvet buttons and there is a girde of velvet ribbon finished at the back with an immense butterfly bow.

It is doubtful if voiles will be replaced, although there is a long list of new materials for fall use. They are seasonable all the year round, and the silk and wool mixtures make charming afternoon and dinner frocks. A dainty check has the front of the waist fastening down over the girde with buttons of fancy braid and there

are incisions at each side, supposedly for the purpose of introducing pipings of silk braid. The neck is in oval outline and the fastening over the shoulder is achieved by means of straps with round ends held over braid buttons. There is a short tunic, pointed at either side of the front, but the skirt is straight with gathers about the waist and a deep hem.

Fur trimmings are beginning to put in an appearance, being used to edge the fashionable new capes, pelisms, separate coats, etc. Women who are fortunate enough to possess scarf and muff sets which have rendered faithful service to be further impressed into use, may cut them into bands and use them as garnitures.

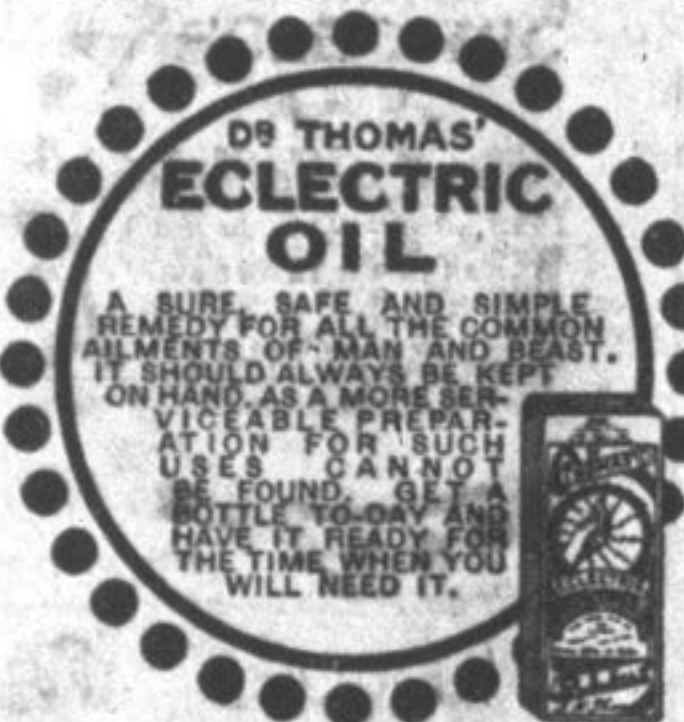
While serges are scarce, there are some unusually good models among the advance autumn offerings.

Feed Your Poultry
Purina Baby Chick Feed.
Purina Chickens Chowder.
Purina Scratch Feed.

More Eggs and Sturdy Chicks.
For Sale By

D. Couper

841-B Princess Street.
Phone 76.
Ontario Food Board License
No. 8-3546.



AT THE MAPLE LEAF CLUB IN LONDON



Sir Robert Borden on his recent trip to England visited the Maple Leaf Club. To his left may be seen Lady Paisley and Lady Drummond.



A scene in "A Daughter of the Sun," at the Grand Opera House on Saturday, Sept. 14th, matinee and night.

Drink Charm Tea

To Reduce the High Cost of Living try a package of Charm New Japan Tea at the low price of 28c a half pound package.

Canada Food Board License No. 8-264.

Our New Fall Designs in Furniture Are Arriving Daily

We invite everybody whether they wish to purchase or not, as it keeps prospective buyers posted in the latest designs.

R. J. Reid

THE LEADING UNDERTAKER; MOTOR AND HORSE EQUIPMENT.

280 PRINCESS STREET Phone 577

The SAFEST MATCHES in the WORLD Also the Cheapest! — are

EDDY'S "SILENT 500'S"

Safest because they are impregnated with a chemical solution which renders the stick "dead" immediately the match is extinguished—

Cheapest, because there are more perfect matches to the sized box than in any other box on the market. War time economy and your own good sense, will urge the necessity of buying none but EDDY'S MATCHES.

Good School Shoes For The Children

All lines on good fitting lasts and real serviceable leathers. In the larger sizes for misses and growing girls we have them both in high and low cut styles in Neolin and leather soles.

Sizes 4 to 7½ priced at . . . \$1.75 to \$4.00
Sizes 8 to 10½ priced at . . . \$2.50 to \$4.00
Sizes 11 to 2 priced at . . . \$3.00 to \$5.00
Sizes 2½ to 7 priced at . . . \$3.50 to \$10.00

J.H. Sutherland & Bro.

The Home of Good Shoes.