

The Market Reports

LIVE STOCK MARKETS.

Buffalo. East Buffalo, Aug. 6.—Cattle—Receipts, 750. Steady. Calves—Receipts, 100. Easier at \$7 to \$13.50, a few at \$19.

Winnipeg. Winnipeg, Aug. 6.—Butcher steers \$7.50 to \$14; heifers, \$6.75 to \$11.50; cows, \$6 to \$11; bulls, \$5.50 to \$8.25; oxen, \$5.50 to \$8.75; stockers and feeders, \$6.50 to \$10.75; weaners, \$6.50 to \$12. Sheep and lambs, \$9.75 to \$14. Hogs, select, \$19.50; heavies, \$16.50; sows and stags, \$14.50; lights, \$10.50.

Chicago. Chicago, Aug. 6.—Hogs—Butchers, \$19.10 to \$19.70; light, \$19.45 to \$19.80; packing, \$18 to \$18.95; rough, \$17.50 to \$17.90; bulk of sales, \$18.10 to \$19.65; pigs, good and choice, \$17.75 to \$18.50.

Montreal. Montreal, Aug. 6.—Choice steers, \$11 to \$12.50; good, \$10 to \$11; medium, \$8 to \$9.50. Choice butchers' bulls, \$9 to \$10. Choice butchers' cows, \$5.50 to \$10.50; good cows, \$9; medium, \$7 to \$8. Sheep, \$12 to \$13; lambs, \$17.50 to \$18.50; grass calves, \$7.50 to \$9; milked, \$12 to \$14. Choice select hogs, off cars, \$21. Sows, \$18.50 to \$19.

Toronto. Toronto, Aug. 6.—Choice heavy steers, \$14 to \$15.50; butchers' cattle, choice, \$12.50 to \$13.75; do. good, \$12 to \$12.50; do. medium, \$10.75 to \$11; do. common, \$9 to \$10; butchers' bulls, choice, \$11 to \$11.25; do. medium bulls, \$7.50 to \$8.50; butchers' cows, choice, \$10.75 to \$11; do. good, \$10.25 to \$10.50; do. medium, \$8.25 to \$8.75; do. common, \$7 to \$8.25; stockers, \$8 to \$10.50; feeders, \$10.50 to \$11; conners and cutters, \$6.50 to \$6.50; milkers, good to choice, \$9 to \$12.50; do. com. and med., \$6.50 to \$7.50; springs, \$6 to \$12.50; light ewes, \$13 to \$15; yearlings, \$15 to \$16.50; spring lambs, \$8 to \$19; calves, good, \$13.50; hogs, fed and watered, \$20; do. weighed off cars, \$20.25.

GRAIN QUOTATIONS.

New York. New York, Aug. 6.—Flour—Market barely steady; springs, \$11.30 to \$11.50; winters, \$10.90 to \$11.25; Kansas, \$11.25 to \$11.50. Rye Flour—Market quiet; fair to good, \$9.75 to \$10; choice to fancy, \$10.65 to \$11.25.

White Corn Flour—Market steady; \$6 to \$5.50. Barley Flour—Market dull; \$9.60 to \$10.25. Rye—Market steady; No. 2 western, \$1.72, cost and freight 'New York.

Wheat—Spot market steady; No. 3 red, \$2.34 1/2 track New York, export to arrive. Corn—Spot market easy; fresh shelled No. 2 yellow, \$2.00 3-4, and No. 3 yellow, \$1.90 3-4, cost and freight New York.

Chicago. Chicago, Aug. 6.—Corn—No. 2 yellow, nominal; No. 3 yellow, \$1.70 to \$1.72; No. 4 yellow, \$1.60 to \$1.62. Oats—No. 3 white, 68 1/2 to 70c; standard, 68 3/4 to 70 1-4c. Rye—No. 2, \$1.63. Barley—\$1.05 to \$1.06. Timothy—\$6 to \$8.50. Clover—Nominal. Pork—Nominal. Lard—\$26.60. Hides—\$24.12 to \$25.

Winnipeg. Winnipeg, Aug. 6.—Oats, No. 2 C.W., 89 1/2c; No. 3 C.W., 86 1/2c; extra No. 1 feed, 86 1/2c; No. 1 feed, 83 1/2c; No. 2 feed, 80 1/2c. Barley, No. 3 C.W., \$1.25; No. 4 C.W., \$1.20. Flax, No. 1 N.W.C., \$4.35.

Toronto. Toronto, Aug. 6.—Manitoba wheat—No. 1 northern, \$2.23 1/2; No. 2 northern, \$2.20 1/2; No. 3 northern, \$2.17 1/2; No. 4 wheat, \$2.10 1/2, in store Fort William, including 2 1/2c tax. Manitoba oats—No. 2 C.W., 89 1/2c; No. 3 C.W., 86 1/2c; extra No. 1 feed, 86 1/2c; No. 1 feed, 83 1/2c, in store Fort William.

American corn—No. 3 yellow, kiln dried nominal; No. 4 yellow, kiln dried, nominal. Ontario oats—No. 1 white, 85c to 86c, nominal; No. 3 white, 84c to 85c, nominal, according to freights outside. Ontario wheat—No. 2 winter, per car lot, \$2.22, basis in store Montreal. Barley—Malting, new crop, \$1.20 to \$1.22. Buckwheat—\$1.80. Rye—No. 2, \$1.90. Manitoba flour—War quality, \$10.95, Toronto. Ontario flour—War quality, \$10.85, in bags, Montreal and Toronto, prompt shipments.

Millfeed—Car lots, delivered Montreal freights, bags included: Bran, \$35 per ton; shorts, \$40 per ton. Hay—No. 1, \$16 to \$17 per ton, track Toronto; mixed, \$14 to \$15 per ton, track. Straw—Car lots, \$8 to \$8.50 per ton, track Toronto.

Montreal. Montreal, Aug. 6.—Oats, Canadian Western, No. 2, \$1.00 1/2; extra No. 1 feed, 97 1/2c. Flour, new standard grade, \$10.95 to \$11.05. Rolled oats, bags 90 lbs., \$5.20 to \$5.30. Bran, \$35. Shorts, \$46. Mouillie, \$67. Hay, No. 2, per ton, car lots, \$14.50 to \$15.

Minneapolis. Minneapolis, Aug. 6.—Flour unchanged. Cash wheat, No. 1 northern, old, \$2.24. Corn, No. 2 yellow, \$1.62 to \$1.66. Oats, No. 3 white, 69c to 70c. Flax, \$4.45 to \$4.49. Bran, \$29.31.

Duluth. Duluth, Minn., Aug. 6.—Lined, on track and to arrive, \$4.46; September, \$4.50 asked; October, \$4.45 asked; No. 4, \$4.43 asked.

New York. New York, Aug. 6.—Flour steady; springs, \$11.30 to \$11.80; winters, \$10.80 to \$11.25; Kansas, \$11.25 to \$11.40. Rye flour, quiet; fair to good, \$9.75 to \$10; choice to fancy, \$10.85 to \$11.25. White corn flour steady, \$5 to \$5.50. Barley flour steady, \$9.60 to \$10.25. Hay firm; No. 1, \$1.60 to \$1.65; No. 2, \$1.50 to \$1.55; No. 3, \$1.30 to \$1.40. Hops dull; standard, spring, \$17, 35c to 43c; 1916, nominal; Pacific coast, 1917, 20c to 23c; 1918, 14c to 16c.

GENERAL TRADE.

Montreal. Montreal, Aug. 6.—Eggs, new laid, per doz, 48c; No. 2, 42c to 43c; selected new laid, 52c. Butter, finest creamery, per lb., prints, 48c; blocks, 46c. Oleomargarine, per lb., 32c. Lard in tubs, per lb., 11 1/2c. Shortening, per lb., 31 1/2c. Honey, white clover, 20 lb. to 60 lb. tins, 20c; comb, 22c. Hams—Large, 34c per lb.; medium, 35c; small, 36c. Bacon, per lb.—Breakfast, 43c; Windsor, 46c; Windsor boneless, 46c.

Beans, per bushel—Japanese, white, \$8 to \$8.25. Potatoes—96 lb. bags, car lots, ex-track, new American, 1 star, \$7.25; No. 2, 6.50 per barrel. Flour—Standard, spring wheat, war flour, \$10.95 per bbl. in bags, f.o.b., to bakers at \$11.05; rye flour, per bbl. in bags, \$16; barley flour, \$13.50; graham flour, \$11; rice flour, \$9. Milked, per ton—Bran, \$35; shorts, \$48. Hay, car lots, per ton, ex-track—No. 1, \$17; No. 2, \$14.50 to \$15; clover mixed, \$12.

Toronto. Toronto, Aug. 6.—Butter, choice dairy, 46c to 48c; do. creamery, 48c to 52c; margarine, lb., 35c to 37c; eggs, new laid, doz., 52c to 55c; cheese, lb., 28c; do. 25c; curries, keys, lb., 30c to 33c; fowl, lb., 30c to 32c; spring chickens, 50c; roosters, lb., 23c; ducklings, lb., 35c; apples, basket, 75c to \$1; blueberries, basket, \$1.85 to \$2.50; do. box, 25c; gooseberries, basket, \$2 to \$2.50; do. box, 20c; currants, black, basket, \$1.50 to \$2.75; do. box, 30c; do. red, basket, \$1.65 to \$2; do. box, 20c; raspberries, box, 27c to 30c; cherries, sour, basket, \$1.50 to \$2; beans, small measure, 16c; beans, new, 34-doz., 10c; carrots, new, 48-doz., 10c; cucumbers, each, 5c to 10c; cabbage, each, 5c to 16c; cauliflower, each, 10c to 20c; celery, head, 5c to 10c; lettuce, head, bunch, 5c; onions, Bermuda, bag, 85c; do. green, bunch, 5c to 10c; peas, basket, 10c; peas, basket, 5c to 75c; potatoes, bag, 32-doz., new, bag, \$2.50; radishes, 3 bunches, 10c; rhubarb, 3 for 10c; sage, bunch, 5c; savory, bunch, 5c; spinach, peck, 25c; tomatoes, basket, 75c to \$1; do. 2 lbs., 25c.

A Parliament of Mayors. Rev. Salem F. Bland, of Winnipeg, is assisting in editing a Calgary newspaper. He was the author of the suggestion that the war-time management of Canada's affairs be entrusted to a Parliament to be composed of the mayors of all towns and cities in the Dominion of more than 10,000 population.

Good Growers. My radishes are doing well And make a fine display. I'll soon have early peas to sell And some to give away. You almost see the lettuce grow. And other garden truck. My vegetables all seem to know They're helping Jack Canuck.

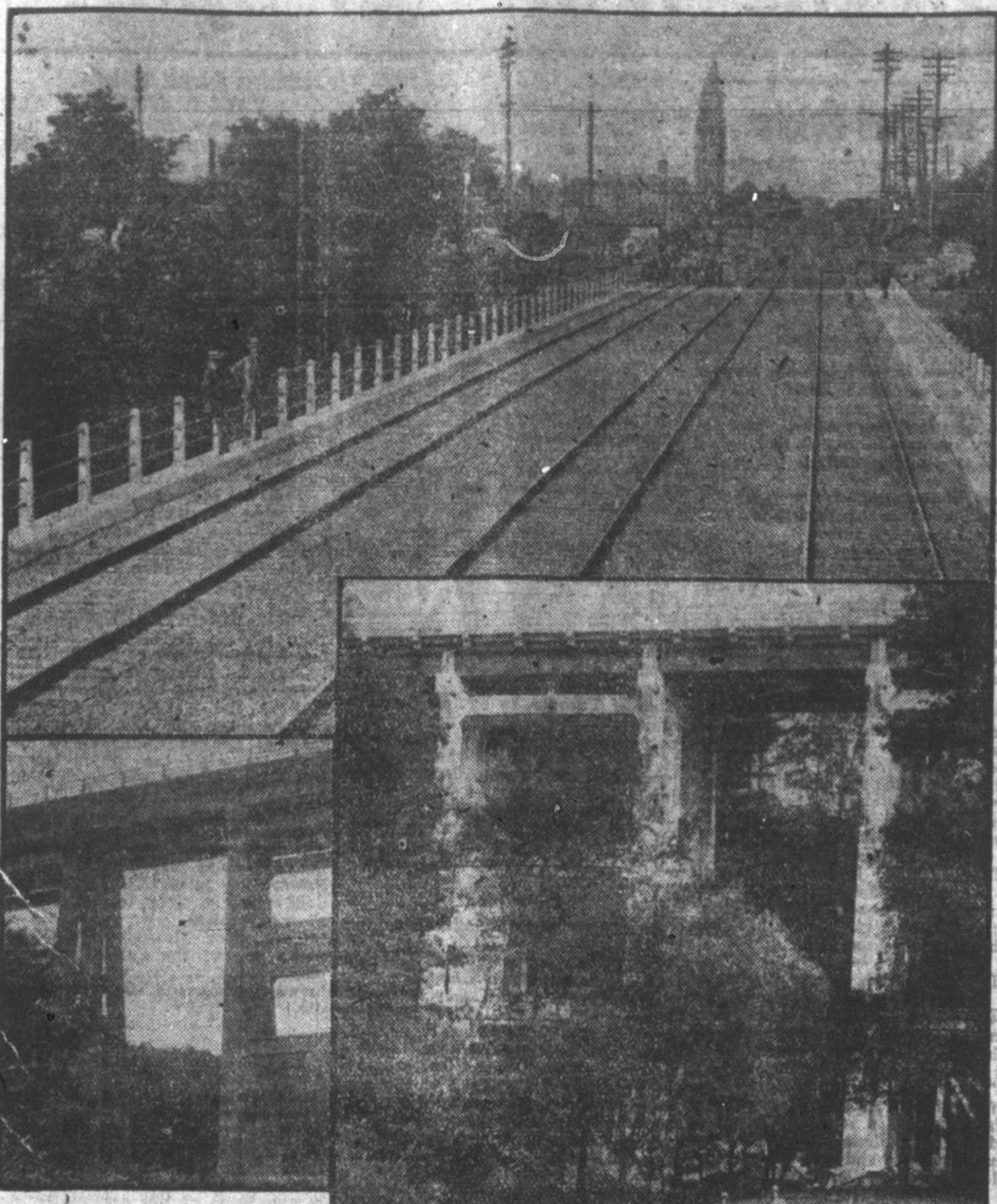
Parker so Retire. Sir Gilbert Parker, the novelist, will retire from the British Parliament at the next election. He has represented Gravesend, Kent, since 1900 as a Conservative. Sir Gilbert was born in Canada in 1862, a son of the late Capt. J. Parker, and was educated at Trinity College, Toronto.

Reflections at Forty. Age teaches many things, by Jink. 'Tis just immense. And every now and then I think I'm getting sense.

One Way. "So this is Sagebrush Centre? I don't see how a man makes a living in such a desolate place." "Well, there's politics everywhere, m' friend."

Auto Drivers Are Not Fit. New York Secretary of State Fugate claims that one out of every six would-be auto drivers are not fit to operate cars. Mrs. J. Lloyd Steele, Lethbridge, Man., died on Thursday, following child-birth. Her parents live at Carleton Place.

Record In Concrete Bridge-Building



THE double tracking of the North Toronto Sub-division of the Canadian Pacific Railway between Leaside and North Toronto is now nearing completion, and involved the replacement of bridges (known as 69 and 1.8) which heretofore had been trusses constructed of steel. Owing to the high price of steel and the difficulty of procuring it since the war began it was found that reinforced concrete competed successfully against steel.

The bridges were therefore constructed of this material and are a triumph of railway construction work. No. 99 being 236-feet long and 90 feet high carrying two tracks and No. 1.8 of similar dimensions but a three track structure. The length of the individual spans and the details of their construction are unprecedented in the engineering world. Previous to this no reinforced concrete beam with a length of more than about 25 feet had been attempted; the spans of these two C. P. R. structures are each from 35 to 37 feet long. These spans have been made possible by the employment of unit construction by which each span was designed as two T-beams which, after being manufactured near the work, were laid side by side on the previously built reinforced concrete towers. The towers themselves are really reinforced concrete buildings constructed in a similar manner by means of wooden forms built around a steel reinforcement which was previously assembled and securely wired together. When all was in readiness the concrete was poured by means of long spouts which led in several directions from the main mixing tower. The pouring of the concrete was maintained as continuously as possible until a work sower was completed. This work was done during the winter, at a time when the temperature was below freezing point; it was performed inside of what was virtually a building erected to maintain a suitable temperature around the newly deposited concrete until it was out of danger of being damaged by frost. These two structures are provided with narrow sidewalks and handrails, which enable trainmen to move conveniently along side-standing trains. The hand rails add considerably to the aesthetic appearance of the structures, which are extremely artistic in appearance and at the same time satisfactory from a general and utilitarian point of view, besides being absolutely permanent. Both are designed to carry the heaviest passenger and freight traffic on the C. P. R. main lines was continued without interruption during the progress of these interesting works.

WILTON RED CROSS WORK.

The Society Adjourns Until the 6th of September. Wilton, Aug. 6.—The hay crop in this district is very heavy. Harvey Mills met with a serious accident while driving a team with a load of hay. The team took fright and upset the load, throwing Mr. Mills off the load, and seriously injuring him. Mrs. John Carr also met with quite a serious accident while on a motor trip, spraining her ankle. Visitors: Mrs. Clement Booth, Miss Mary Booth, Miss Marjory Booth, Ruth Miller, Sandhurst, with Robert Miller; Miss Annie Thompson, Inverary, with Llori Storms. Mr. and Mrs. Boy Simmons and family took a motor trip to Picton, the Sand Bank and Mohawk Camp, Deseronto, on July 28th. Mr. and Mrs. Earl Perry, Mrs. O. Babcock, Miss Mildred Babcock and Oliver Henderson motored to Trenton on August 4th. The Wilton Red Cross Society packed the following goods for Queen's overseas military hospital in June and July: 51 pairs socks, 21 towels, 196 handkerchiefs, 20 pairs pyjamas, 2 quilts, 2 pillowcases, \$115. Owing to the warm weather the Red Cross Society has cancelled its weekly meetings until Sept. 6th.

GRAND TRUNK RAILWAY SYSTEM

LOCAL BRANCH TIME TABLE IN EFFECT JUNE 23RD, 1918. Trains will leave and arrive at City Station, Foot of Johnson Street. Going West: No. 19 Mail... 12:30 a.m. 12:57 a.m. No. 13 Express... 3:10 a.m. 3:52 a.m. No. 27 Local... 4:45 a.m. 10:17 a.m. No. 1 Intern'l. Ltd... 1:20 p.m. 1:59 p.m. No. 7 Mail... 3:00 p.m. 3:40 p.m. Going East: No. 18 Mail... 1:40 a.m. 2:17 a.m. No. 16 Express... 3:10 a.m. 3:52 a.m. No. 6 Mail... 12:20 p.m. 12:52 p.m. No. 14 Intern'l. Ltd... 1:20 p.m. 1:59 p.m. No. 28 Local... 6:45 p.m. 7:17 p.m. Nov. 1, 13, 14, 16, 18, 19 run daily. Other trains daily except Sunday. Direct route to Toronto, Peterboro, Hamilton, Buffalo, London, Detroit, Chicago, Bay City, Saginaw, Montreal, Ottawa, Quebec, Portland, St. John, Halifax, Boston and New York. For Pullman accommodation, tickets and all other information, apply to J. P. Hanley, Agent, Agency for all ocean steamship lines. Open day and night.

WESTERN PREMIER AT WESTERN FRONT



Hon. C. A. Stewart of Alberta, and a Canadian divisional general talking to a pipe-major at a sports meet behind the Canadian lines. Canadian War Records Official Photo. Copyright.

Conservation Biscuits. Rob Roy contains small percentage of finest selected prepared bran. Robin Hood... whole wheat. Scotch Perkins, Oatmeal Gems, big rich oats. Cornmeal Snaps, rich white kiln dried corn. Wholesome, Nourishing and Attractive. Crothers' Biscuit and Confectionery Manufacturers. Meadow Cream Sodas. Canada Food Board License Nos. 7-530 and 11-681.

WORTH WHILE! It will be worth the trouble to you to look at our midsummer sale prices on shoes, pumps, and white canvas lines. Lines at \$1.49, \$1.98, \$2.25, \$2.98 and \$3.49. SPECIAL—25 pair Men's Gun Metal Oxfords, fibre sole, rubber heels, smart shape. \$6.00 value. Sale price... \$3.59. J.H. Sutherland & Bro. The Home of Good Shoes. Henri Pauquette, the young employee of the British Chemical Company at Trenton, accused of negligence in connection with his duties at the plant, was acquitted of the charge before Magistrate O'Rourke at Trenton. THOMAS COPLEY Telephone 987. Wanting anything done in the carpentry line. Estimates given on all kinds of repairs and new work; also hardwood floors of all kinds. All orders will receive prompt attention. Shop 25 Queen street.

HELP SAVE WESTERN CROP 20,000 Farm Laborers Wanted \$12 to Winnipeg. Plus half a cent per mile beyond. Returning, half a cent per mile to Winnipeg, plus \$18.00. Comfortable Through Trains, Lunch Service at moderate prices, Special Accommodation for Women and a scenic Route by C.N.R. Excursion Dates from KINGSTON, AUG. 20 AND 29. Special Train Service: Use regular trains to connect with Harvesters' special from Toronto, 10 p.m. Through tickets by all lines. Further particulars from your nearest C.N.R. Agent, or write General Passenger Dept., 68 King St. E., Toronto, Ont. Ask for "Harvester Work and Wages" Leaflet. CANADIAN NORTHERN RAILWAY

Many Thousand Farm Laborers Wanted for Harvesting in Western Canada. "Going Trip West"—\$12 to WINNIPEG. "Return Trip East"—\$18 from WINNIPEG. GOING DATES August 20, and August 29. From stations in Ontario West of Smith's Falls to and including Toronto on Lake Ontario Shore Line and Hawke's Point-Perth Line. From stations Kingston to Renfrew Junction, inclusive. From stations Toronto-Sudbury direct line. From stations South St. Marie branch. From stations Meaf Lake, Deseronto to Franz, inclusive. From stations Barbary Junction to Port McNicoll and Burketon-Boboyron. SPECIAL THROUGH TRAINS FROM TORONTO. For particulars and information apply to F. Conway, C.P.A., City Ticket Office, Cor. Princess and Wellington streets. Phone 1197.

CASTORIA For Infants and Children In Use For Over 30 Years Always bears the Signature of J. C. Watson