

# In The Automobile World

## FACTS U AUTO KNOW

In the absence of a blowout patch, a motorist recently tore up an old skirt and cemented a flat portion around the tube at the place opposite the hole in the casing. Two wrappings were made, and the patch held for 60 miles.

Never attempt to force the upper half of the windshield up or down by pushing on one side, especially if the shield is an old one. If the framework is at all weak, this method of handling probably will break the pane.

In cars fitted with a piston type of oil in its proper channels may be remedied by disconnecting the line behind the gauge and forcing oil from a can through the pump lead while the engine is running slowly. When oil spurts back through the pipe it shows that the pump is working again.

A great deal of clutch trouble for which the owner can find no obvious cause is due to the fact that the clutch shaft is out of true with the centre of the fly wheel. This causes

one side of the cone clutch to bind while the other side is free; in the case of the disc clutch, the plates tend to hold only one side. The result is that the clutch grabs when engaged. If persistent treatment and adjustment does not help a clutch, it is safe to conclude that the condition mentioned is causing the trouble.

When lightning fuses blow out one after the other, it does not pay to keep replacing them; it is something more than coincidence. Try to find out the cause, and the first place to look is in the cutout. If this portion of the lighting system is of the type that has points which may become stuck, it is likely to cause continued fuse breakage.

The glossy finished leather substitute upholstery is better than the dull finished, the latter being prone to crack or lose its coloring material through friction. Use of the dull material brings a sort of half glossy finish and the cracking ceases, but it is better to get the bright finish in the first place.

Keep your eye on the road. Many operators are continually looking down at their feet, at the accelerator pedals, etc., while operating. This takes their attention away from the road, which is dangerous. With a little practice you can soon locate all the necessary pedals, etc., without looking for them. This is the only safe way to drive.

Along the same lines of safety is the practice of keeping your hand on the speed lever until you have finished with it. You must watch the road while you are changing from one speed to another, and you cannot do this if you have to look down and find the speed lever several times.

When halted by a traffic policeman or other obstruction, put gears in low speed and hold clutch out. As soon as you are signalled to go, let in clutch and are off with a touch on accelerated pedal.

### HINTS ON CARE OF TIRES.

Tells of Commonest Causes of Poor Service.

"Tire expense is one of the greatest bugbears of motoring," says William H. Stewart, Jr., president of the Stewart Automobile School. "Especially is this true with a heavy car, although the man who drives a light car has his share of trouble. One reason is because the average owner or driver does not give his tires the attention they require. Using proper care in this respect, the motorist may save many dollars in the course of a year."

"Of course, he knows that his tires should be kept inflated, but very few know the rule. The pressure in the front tire should be eighteen times the small diameter of the shoe. For a 4-inch tire this should be 4 x 18, or 72 pounds. The pressure in the rear tire should be twenty times the small diameter, or 80 pounds for a 4-inch tire. Some manufacturers reduce these figures slightly, but the above rule is a very good one to go by. No one can estimate the pressure in a tire by looking at it or by kicking it to note the rebound. A pressure gauge is absolutely essential, and a serviceable one can be had for 31¢. It will save its cost many times over. This is due to the fact that a tire is rarely pumped hard enough unless it is tested with a gauge, and if the tire is soft it bends too much as the weight of the car is supported on it, and when the car is running this bending action weakens the entire tire, heats it and so shortens its life.

"A fact frequently overlooked is that the tire must be re-inflated at least once a week. Although the inner tube holds air very well, it is porous and allows air to leak out in time. This is due to the small particles of sulphur working out and leaving holes through which the air can pass. So test the pressure occasionally and re-inflate when necessary.

"Keep off the car tracks. The tire is supposed to be supported on a flat surface. If it is supported on one side and not on the other, as is the case when running on car tracks, a terrific breaking strain is caused in the fabric, which weakens and finally breaks. This practice also cuts the tread badly. It is quite evident that the tire should not rub against the curb, as that tears away the side walls. Other causes of wear on the side are deep cuts and running through crushed stone.

"Make sure that your front wheels are in line. If they toe out or in they will wear away the tread in a short time. "By paying attention to these details you will find your tire expense reduced materially; you will get better adjustments, and you will be relieved of much of that haunting fear of trouble on the road."

**Government Auto Factory.**  
Uncle Sam plans a plant of his own for the building of special bodies for army motor trucks and the repair of trucks sent in from the field. An appropriation of \$100,000 has been asked of Congress by the war department for the erection of new buildings to the present motor repair plant at the quartermaster's depot at Jeffersonville, Ind. Machinery will be installed for the building of complete trucks, if this should be found to be necessary. There is ample government ground available for an even greater increase in the size of the plant than that now proposed.

**Reveals Weak Cylinder.**  
In turning up a six-cylinder motor one should be very careful to note that there is good compression in each cylinder. In a four-cylinder motor the sound of the exhaust will reveal a weak cylinder. From the exhaust of a six-cylinder motor, however, the condition of a particular cylinder is hard to detect on account of the stroke lapping. Very often a weak cylinder is not detected, and the carburetor adjustment is changed to eliminate the supposed thump in the motor. In reality the cause lies in a weak cylinder.

## NEWEST NOTES OF SCIENCE

A process has been patented by a Welsh inventor for removing solder, tin and chemicals from scrap and galvanized metals and utilizing the base metals.

Since the discovery of tin in Alaska in 1902 nearly 1,000 tons of the metal have been produced, and it is believed that this year's yield will be 300 tons.

To help a locomotive fireman with his work a New York inventor has patented a vibrating pusher that moves coal from the back of a tender toward the front.

European investigators have found that partridges eat the seeds of many noxious weeds and insects destructive to plant life, therefore, are deserving of protection.

The United States Geological Survey has estimated the amount of rock phosphate in the known deposits in Idaho, Utah, Wyoming and Montana at nearly 5,300,000,000 tons. Sections of an English inventor's double cooking boiler fit so tightly that their contents get the full benefit of the steam, explosions being prevented by a safety valve.

To make the spring and weight exercising machines more attractive to children a physical culturist has mounted them in a human figure, the handles being enclosed in the hands.

One Chinese province annually exports more than 150,000 tons of peanuts, all because an American missionary several years ago gave a native convert a quart of California seed.

A well-known motion picture actress has designed an automobile which serves her as a dressing room with almost as many conveniences as a dressing room in a theatre would provide.

From the speed at which earthquake waves travel through the earth an English scientist has constructed a theory that the world has a dense central core, which may be measured in time.

Concrete roads expand most in winter and contract most in summer, according to the United States Bureau of Standards, because of increases or decreases in the moisture they contain.

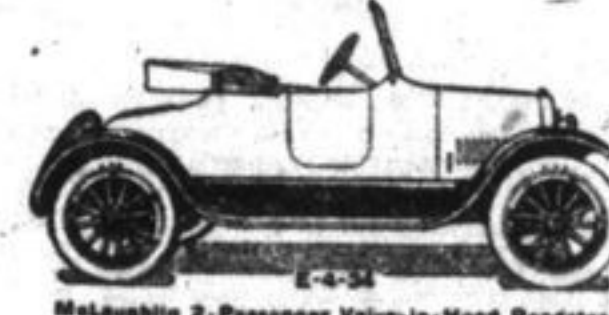
Lever overated clamps for the hands and feet have been invented in England to take the place of ankle spikes for pole climbers, with the added advantage that they can be used on metal poles.

Ventilation is provided a new stiff hat for men by perforating the body under the ribbon with a large number of holes and fluting the sweat band vertically to cause currents of air to circulate.

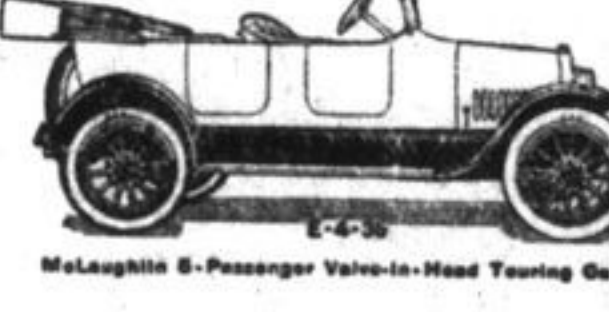
An artificial coffee is being made in Austria from figs, dried either in the sun or evaporating pans, ground into powder and then compressed into tablet, to be dissolved in hot water when desired.

A novel device to eliminate the glare of automobile headlights covers the front of the electric bulb and divers the rays of the lower half so they are added to the light thrown by the upper half of the reflector.

# Announcing New Series "E" McLaughlin Leaders in All Points of Merit



McLaughlin 2-Passenger Valve-in-Head Roadster



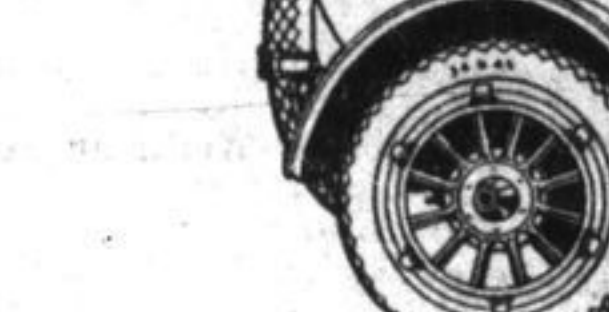
McLaughlin 5-Passenger Valve-in-Head Touring Car



McLaughlin 7-Passenger Valve-in-Head Touring Car



McLaughlin 3-Passenger Valve-in-Head Roadster



McLaughlin 4-Passenger Valve-in-Head Roadster

The New McLaughlin Models Eclipse all Previous Standards of Beauty and Value

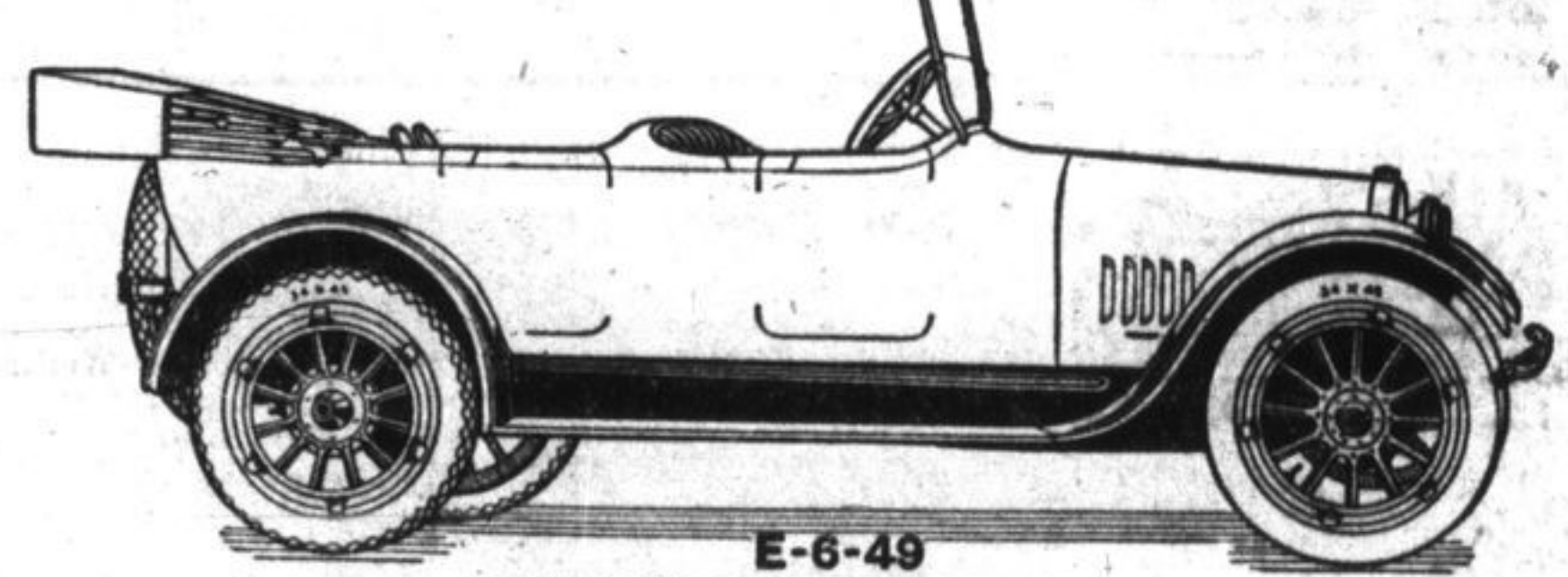
EVEN more graceful in design with greater power the new series "E" more than maintains the supremacy accorded "Canada's Standard Car" for eight successive seasons. The famous McLaughlin valve-in-head motor develops more power than any other type of motor of the same bore and stroke, and develops this reserve power with the minimum gasoline consumption. Every mechanical feature of McLaughlin cars has been perfected to the same high standard of efficiency as the motor.

McLaughlin designers and engineers have built 12 body styles of rare beauty—worthy masterpieces of our coach builders' art. This complete line of 12 new models built in one group of factories and distributed by 12 branches and over 300 dealers from coast to coast includes a car for every need. See the new series "E" before you buy your car.

SEND FOR NEW CATALOGUE  
"WHEN BETTER AUTOMOBILES ARE BUILT, McLAUGHLIN WILL BUILD THEM"

THE McLAUGHLIN MOTOR CAR CO. Limited

Oshawa, Ontario



McLaughlin E-6-49 7-Passenger Valve-in-Head Touring Car  
LOCAL SHOW ROOMS  
ANGROVE BROS., Queen and Bagot Streets.

## Stop!



### IS YOUR CAR INSURED?

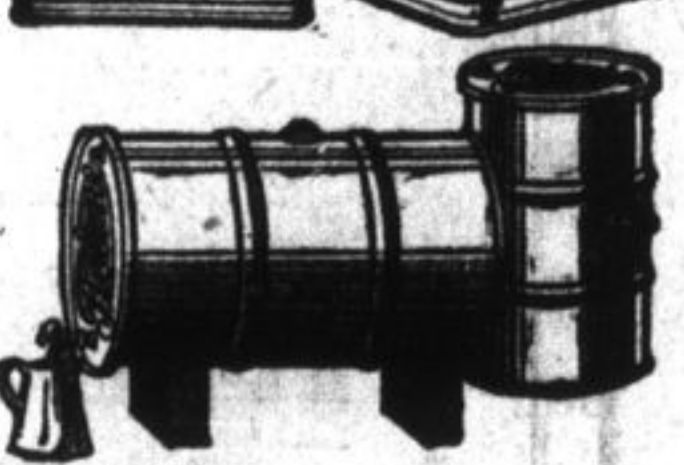
We have a very up-to-date policy which we would like to explain to you — it covers all hazards a car is insured against. Call, write or phone at our expense.

## J.K. Carroll Agency

Real Estate and Insurance. Phone 68. 46 Brock St.

## FOR YOUR CAR

"The Oil That's Clean"

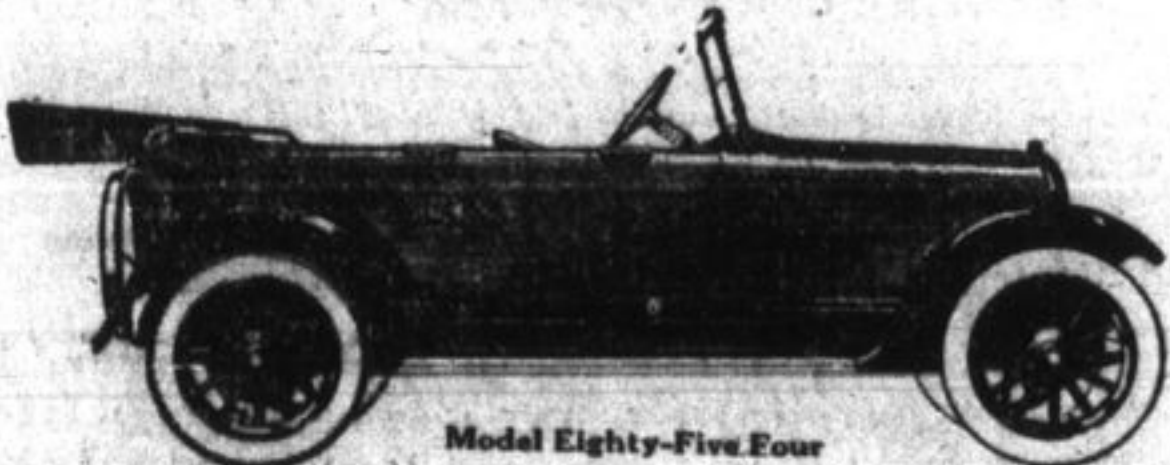


You more than pay for what you might save on lubricating oil in increased cost of overhauling and in the shortened service life of your motor.

**TIOLENE** is the most trustworthy and hence the most economical lubricant to use.

Harvey Milne  
272 Bagot St., Kingston. Phone 542.

## Overland



Model Eighty-Five-Four

## Big, Powerful Real Family Cars

We know through years of experience that a thirty-five horsepower motor placed in a car of proper weight, makes an ideal driving combination for all but the most radical speed demons.

Year after year for many years the demand for the thirty-five horsepower Overland models has increased in Canada and this year the sales of the Model Eighty-Five have eclipsed all previous records.

You can have your choice in this Eighty-Five Model of either a four or a six cylinder motor. The wheelbase of the Four is 112 inches—that of the Six 116 inches.

Both are comfortable easy riding cars. Each represents what we believe to be the best motor car value for the money in Canada.

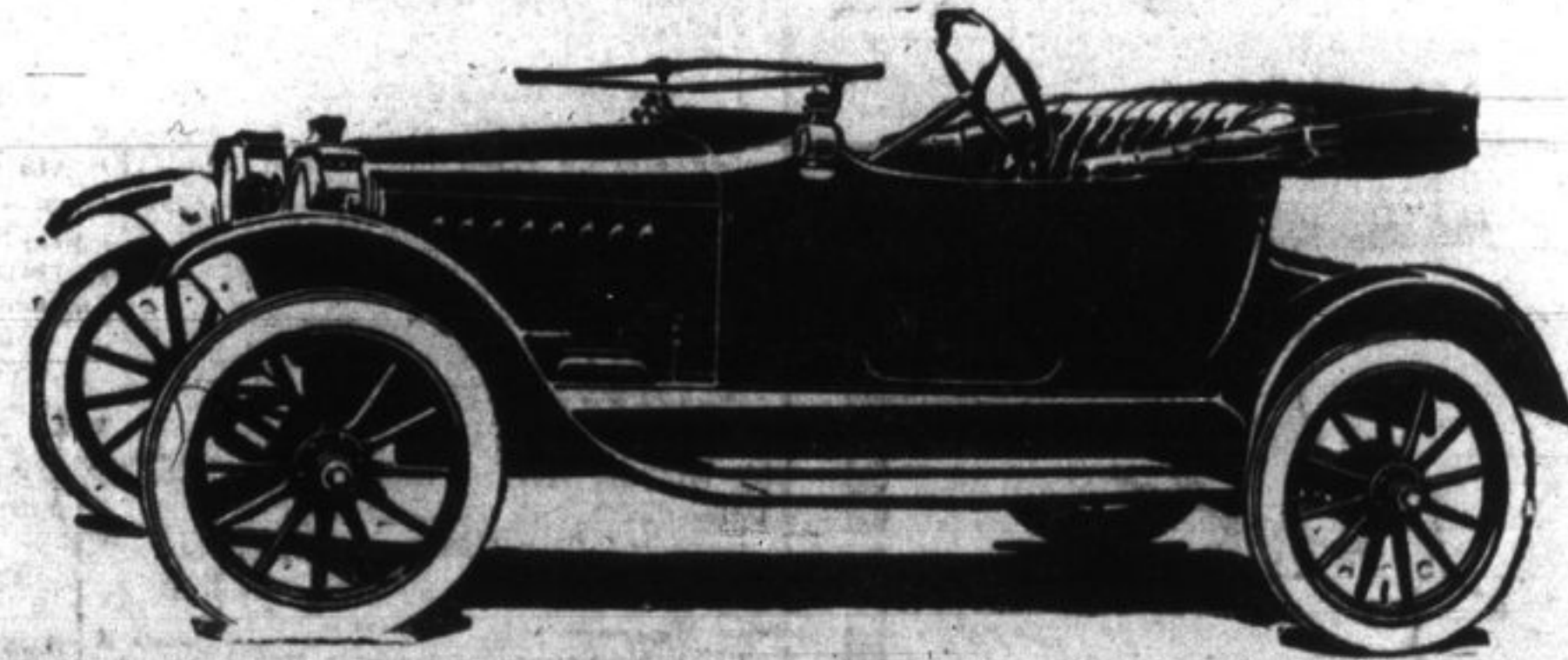
Come in and see them. Ask for a demonstration. We are at your service.

If you prefer a closed car, we have a wide variety of types to choose from in Light Fours, Model 85-Fours, Light Sixes, Willys Sixes and Willys-Knights

Overland Sales Rooms: Arthur W. H. Callaghan, Dist., 210-214 Wellington Street. Phone 1410.

Willys-Overland, Limited  
Willys-Knight and Overland Motor Cars and Light Commercial Wagons  
Head Office and Works, West Toronto, Ontario

# SAXON



## \$540.00 Buys a Saxon Roadster—Greatest Automobile Value Ever Offered—Special for Sept.

THE BIGGEST AND BEST PROPOSITION EVER OFFERED TO THE PEOPLE OF KINGSTON. A COMPLETE EQUIPPED ROADSTER, INCLUDING EVERYTHING, TOOLS, JACK, PUMP, AND OUTFIT AS PER SPECIFICATION, \$540 f.o.b. WINDSOR

### Look! We Give You For This Price

- Electric Starting and Lighting System, Wagnner 2 Unit Type.
- Demountable Rims.
- 30 in. x 3 in. tires.
- Hyatt Quiet Bearings.
- High Speed Saxon-Continental Motor.
- Schebler Model L. Carburetor.
- 3 Speed Transmission, dry plate clutch.
- Streamline Body.
- Fedders Honeycomb Radiator.
- Atwater-Kent Ignition.
- Extra long vanadium steel springs, cantilever type.

## 30 Miles Per Gallon of Gasoline

Never Before Has There Been any Automobile value that can compare with this — Just stop and figure it for yourself — ALL FOR \$540.00.

ORDER NOW AND ENJOY THE HUM OF THE SAXON.

J. H. DAVIS, Distributor

Kingston