

In The Automobile World

HANDLING STEERING WHEEL.

How do you hold your steering wheel? Is your "stance" patterned after that of any of the speed kings of the motor world, or do you just grab hold? The control a race driver has over his car often means the difference between life and death. Have you ever given this matter a thought?

Most of the drivers prefer the average-sized wheel, but Dario Resta's car, with which he took so many of America's races in 1915-1916 and won the championship, was equipped with a large wheel. Some of them hold the wheel with apparently a loose grasp, while others tightly clench the spokes. The majority grasp the wheel with their hands opposite almost in the centre. Several hold the wheel by the lower segment and some control their cars by gripping the upper half.

Eddie Rickenbacher has one of the most peculiar grips, taking hold of the wheel with a firm grasp of the upper half and extending his elbows to give more purchase on the rim. Louis Chevrolet, Ray Harroun, Ralph De Palma and Joe Dawson take hold of the wheel with apparently an easy grip and control the car by using the lower segment. Earl Cooper, Jan Chassagne, Arthur Dury and Joe Christians place their hands almost opposite on the wheel, but with one hand below and the other above a centre line through the wheel. Barney Dabrow, Gil Anderson and John Aitken employ a grip that places the hands on a centre line through the wheels.

NEWEST NOTES OF SCIENCE

So that a watch will be as accessible as if worn on a wrist an inventor has patented a pouch to be suspended from a belt.

To enable an automobile to pull itself out of a mud hole there has been invented a reel of broad tape which, when fastened to a mired wheel, is unwound by it to form a dry pathway.

By a Frenchman's invention as a language student hears a word spoken by a phonograph he also sees it appear on a printed roll in conjunction with its translation in his own tongue.

Almost automatic in operation is a new type of automobile signal that uses large dials with arrows to indicate the direction a car is taking, and a vibrating hand to show it will stop.

An English scientist believes that if the radium in the interior of the earth is equal in quantity to that in the surface rocks, the world will grow hotter in time instead of colder.

To utilize an automobile to drive farm machinery an inventor has patented a frame that jacks up the rear axle of a car takes power from the wheels and delivers it by pulleys and belts.

Apparatus has been invented by a Frenchman accurately to record all movements made by the feet of artificial legs in walking to enable a person to select the type of leg best suited to him.

The state of Pennsylvania will transplant about 3,800,000 forest tree seedlings in reforestation operations this year and will give away about 1,750,000 more to individuals and corporations for like use.

Patents have been granted to a Connecticut woman for a baking board consisting of a pad of waxed paper, from which single sheets can be removed when soiled and for a waxed paper rolling pin with a cardboard core.

A ventilated box to serve as a window refrigerator that recently was patented is so mounted that it can be swung outside or inside a window or entirely out of the way when the use of the full window is desired for other purposes.

Stop!



IS YOUR CAR INSURED?

We have a very up-to-date policy which we would like to explain to you — it covers all hazards a car is insured against. Call, write or phone at our expense.

J.K. Carroll Agency

Real Estate and Insurance. Phone 68. 56 Brock St.

Announcing New Series "E" McLaughlin Leaders in All Points of Merit

The New McLaughlin Models Eclipse all Previous Standards of Beauty and Value

EVEN more graceful in design with greater power the new series "E" more than maintains the supremacy accorded "Canada's Standard Car" for eight successive seasons.

The famous McLaughlin valve-in-head motor develops more power than any other type of motor of the same bore and stroke, and develops this reserve power with the minimum gasoline consumption. Every mechanical feature of McLaughlin cars has been perfected to the same high standard of efficiency as the motor.

McLaughlin designers and engineers have built 12 body styles of rare beauty—worthy masterpieces of our coach builders' art.

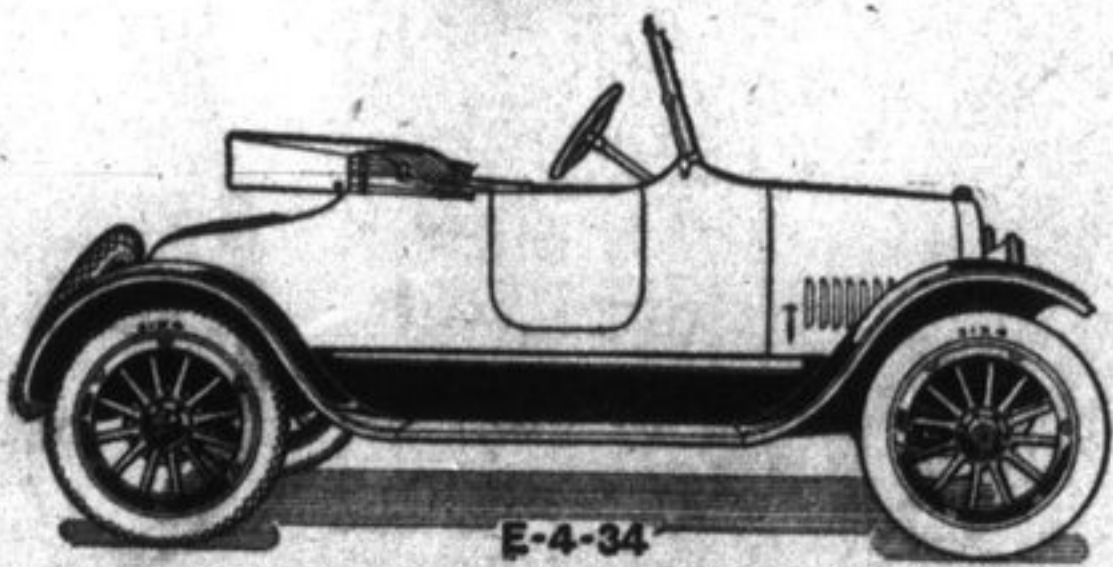
This complete line of 12 new models built in one group of factories and distributed by 12 branches and over 300 dealers from coast to coast includes a car for every need.

These designs anticipate the coming styles—pleasing, artistic, without a freakish line. See the new series "E" before you buy your car.

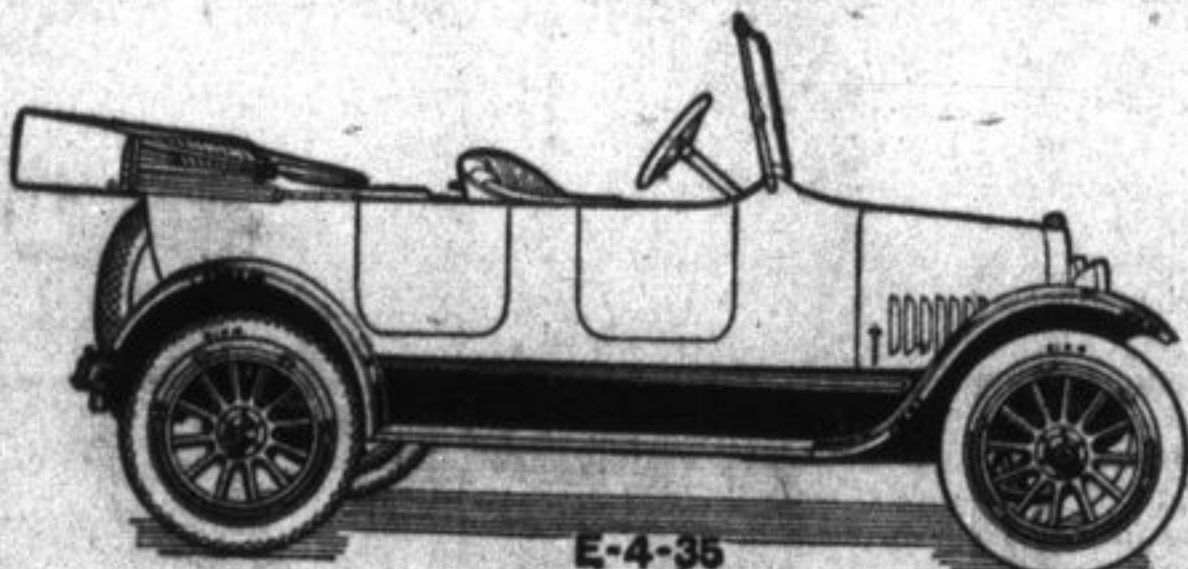
SEND FOR NEW CATALOGUE

"WHEN BETTER AUTOMOBILES ARE BUILT, McLAUGHLIN WILL BUILD THEM"

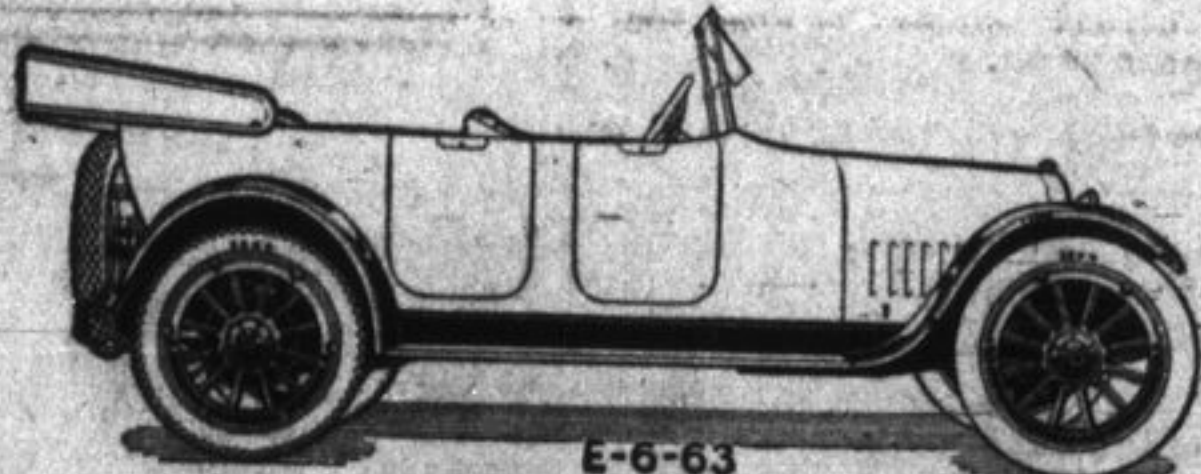
See this New Series at the Toronto Exhibition



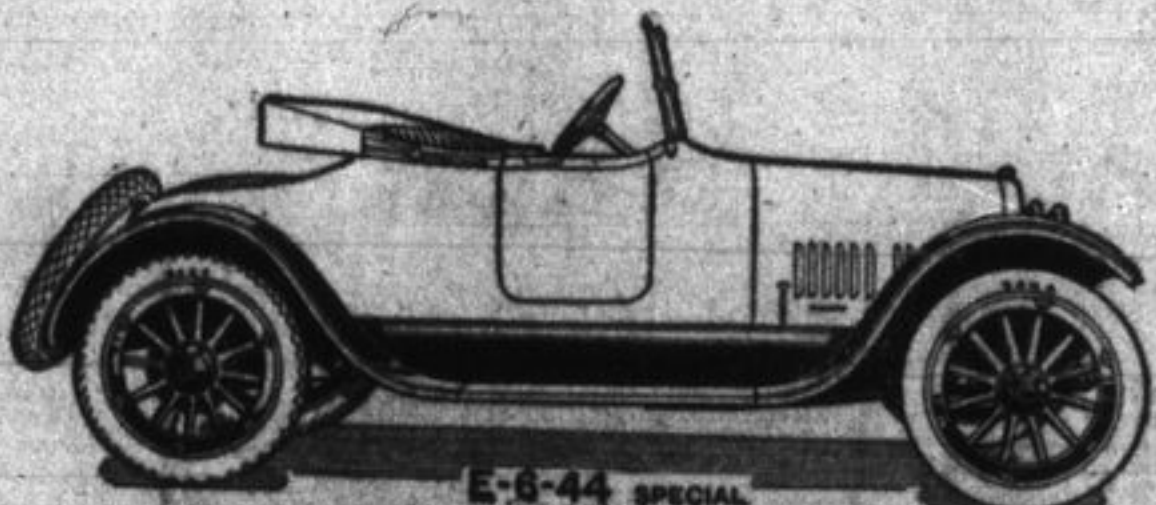
McLaughlin 2-Passenger Valve-in-Head Roadster



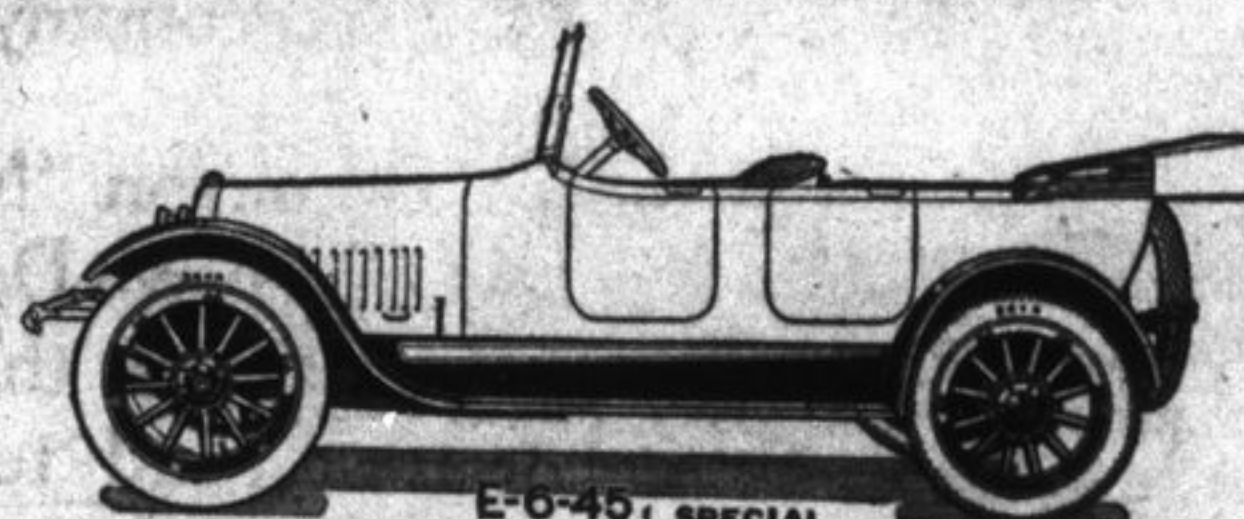
McLaughlin 5-Passenger Valve-in-Head Touring Car



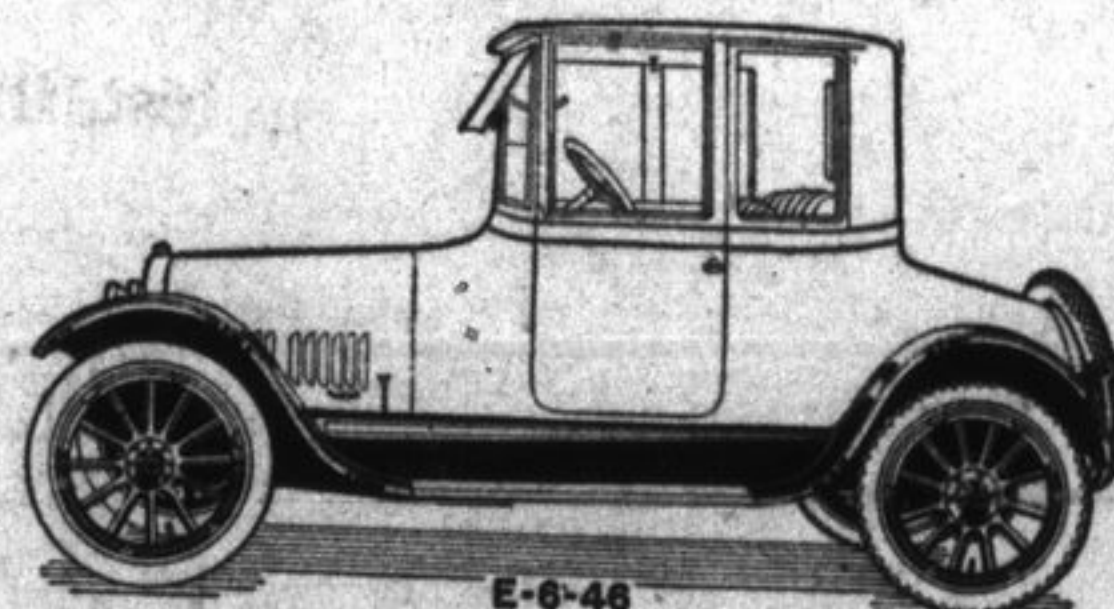
McLaughlin "Light Six" Valve-in-Head Touring Car E-6-63 is a Roomy Roadster Built on the Same Chassis



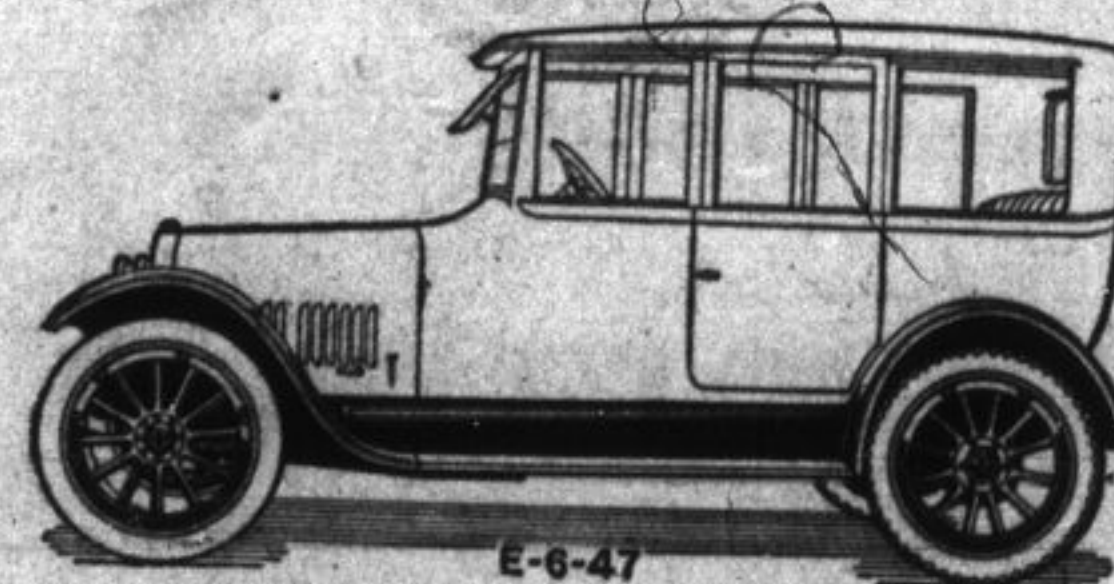
Gentleman's 3-Passenger Valve-in-Head Roadster E-6-44 Regular, Built on the Same Chassis



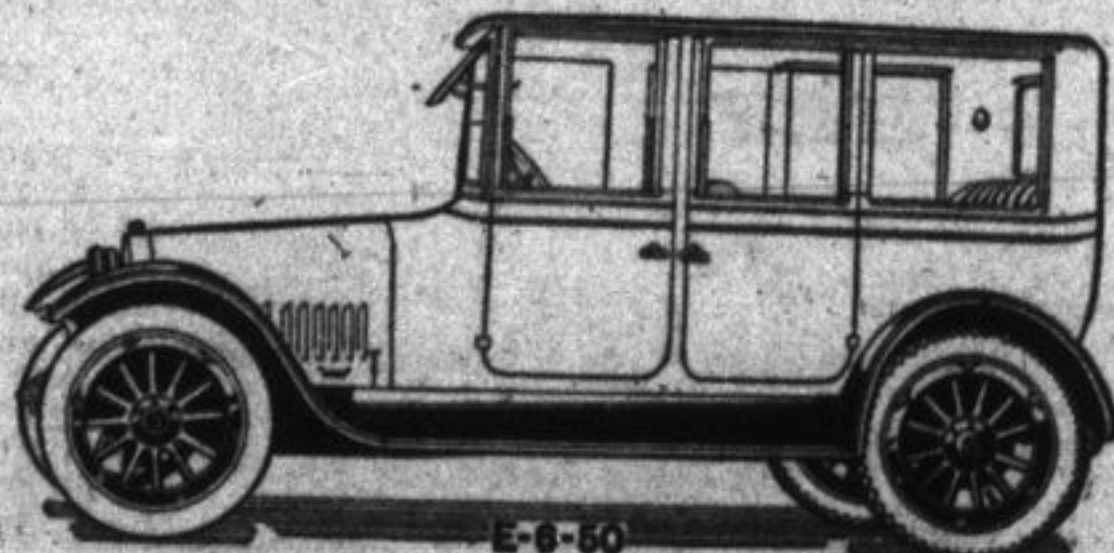
McLaughlin 5-Passenger Valve-in-Head Touring Car E-6-45 Regular, Built on the Same Chassis



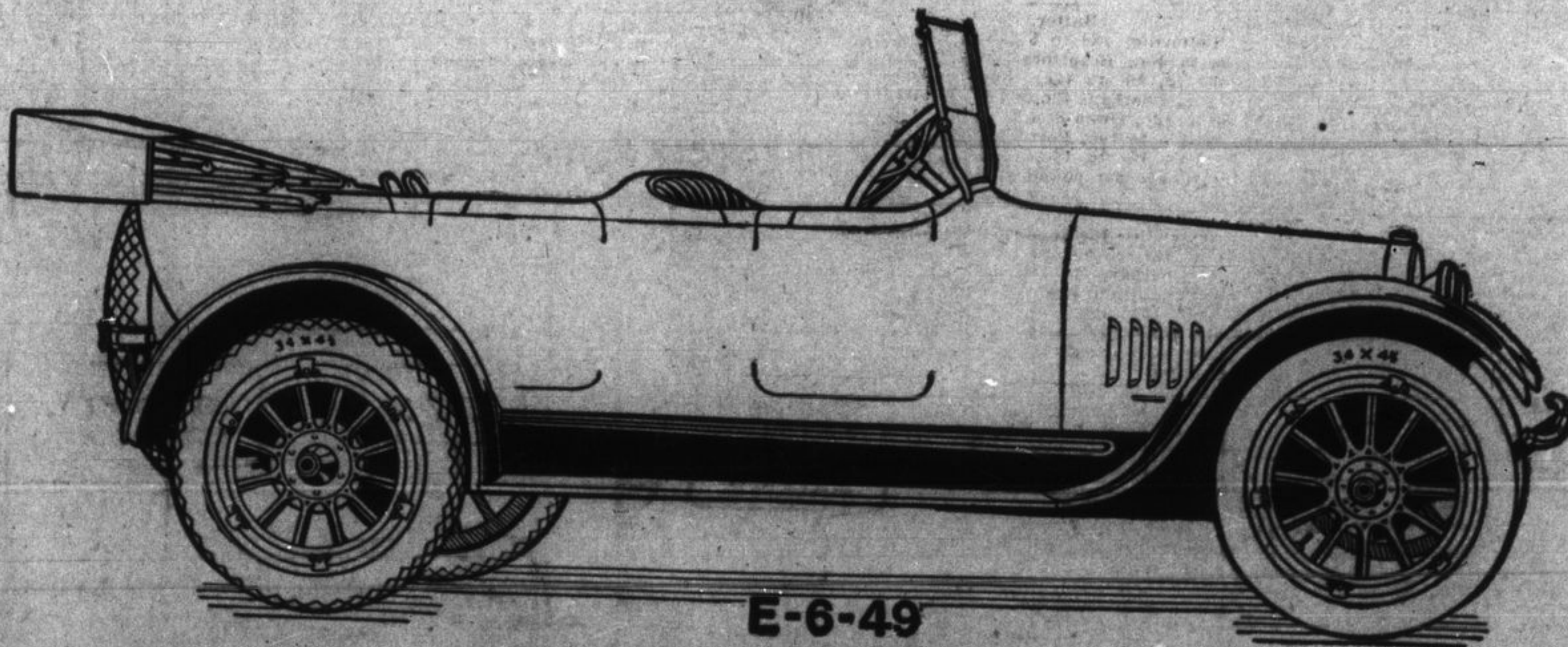
McLaughlin 4-Passenger Valve-in-Head Touring Coupe



McLaughlin 5-Passenger Convertible Sedan



McLaughlin 7-Passenger Convertible Touring Sedan



McLaughlin 7-Passenger Valve-in-Head Touring Car

The McLaughlin Motor Car Co. Limited, Oshawa, Ont.