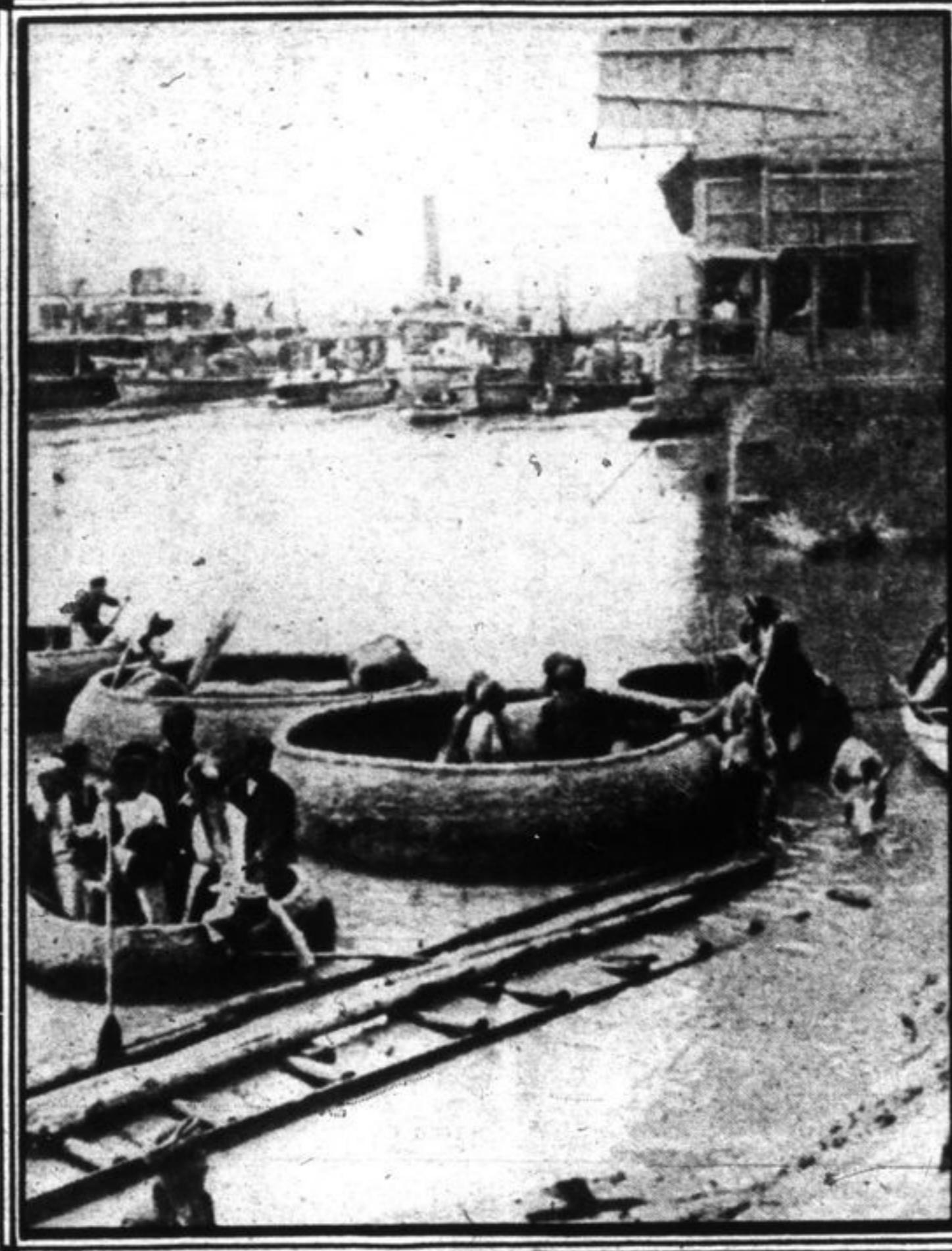
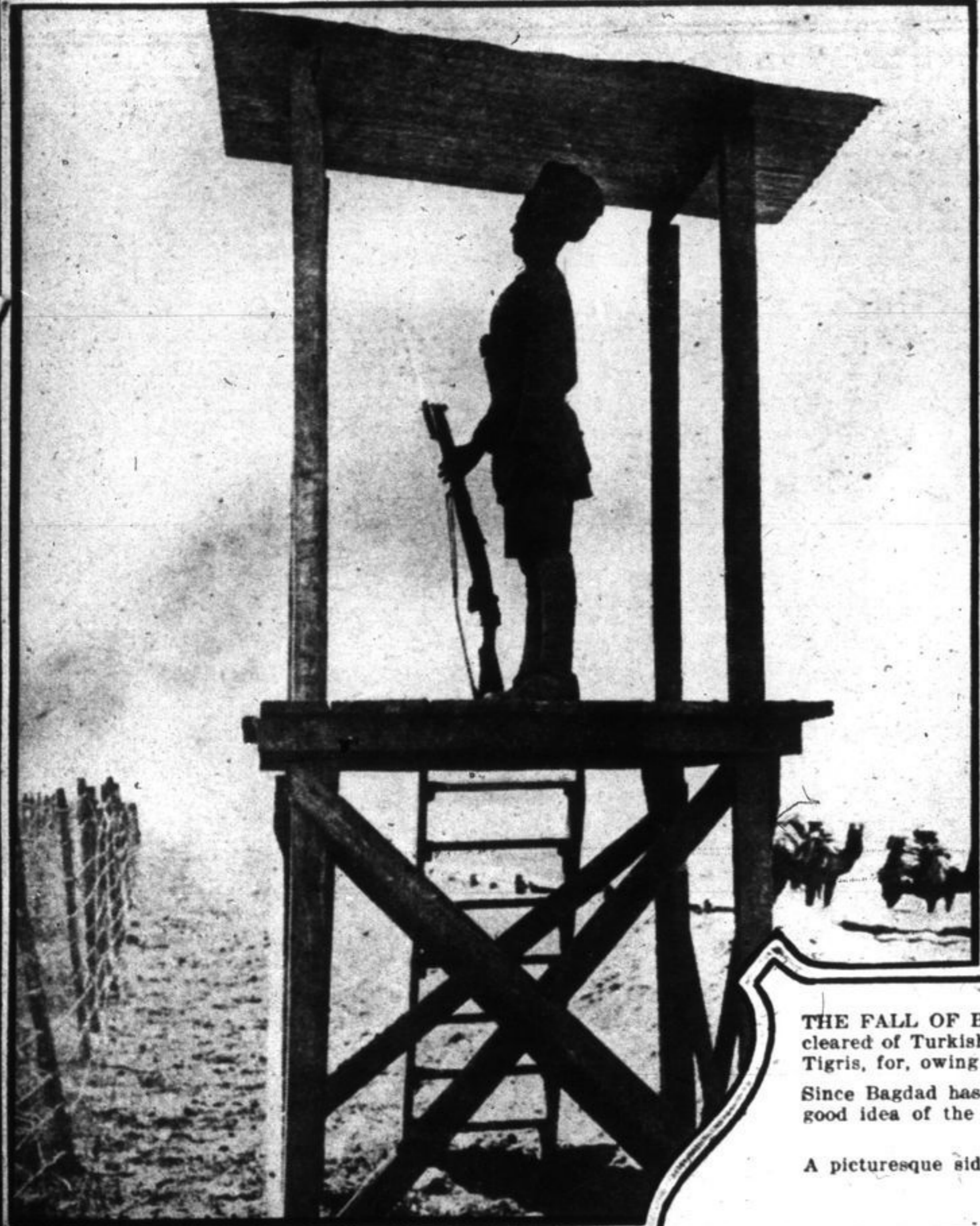
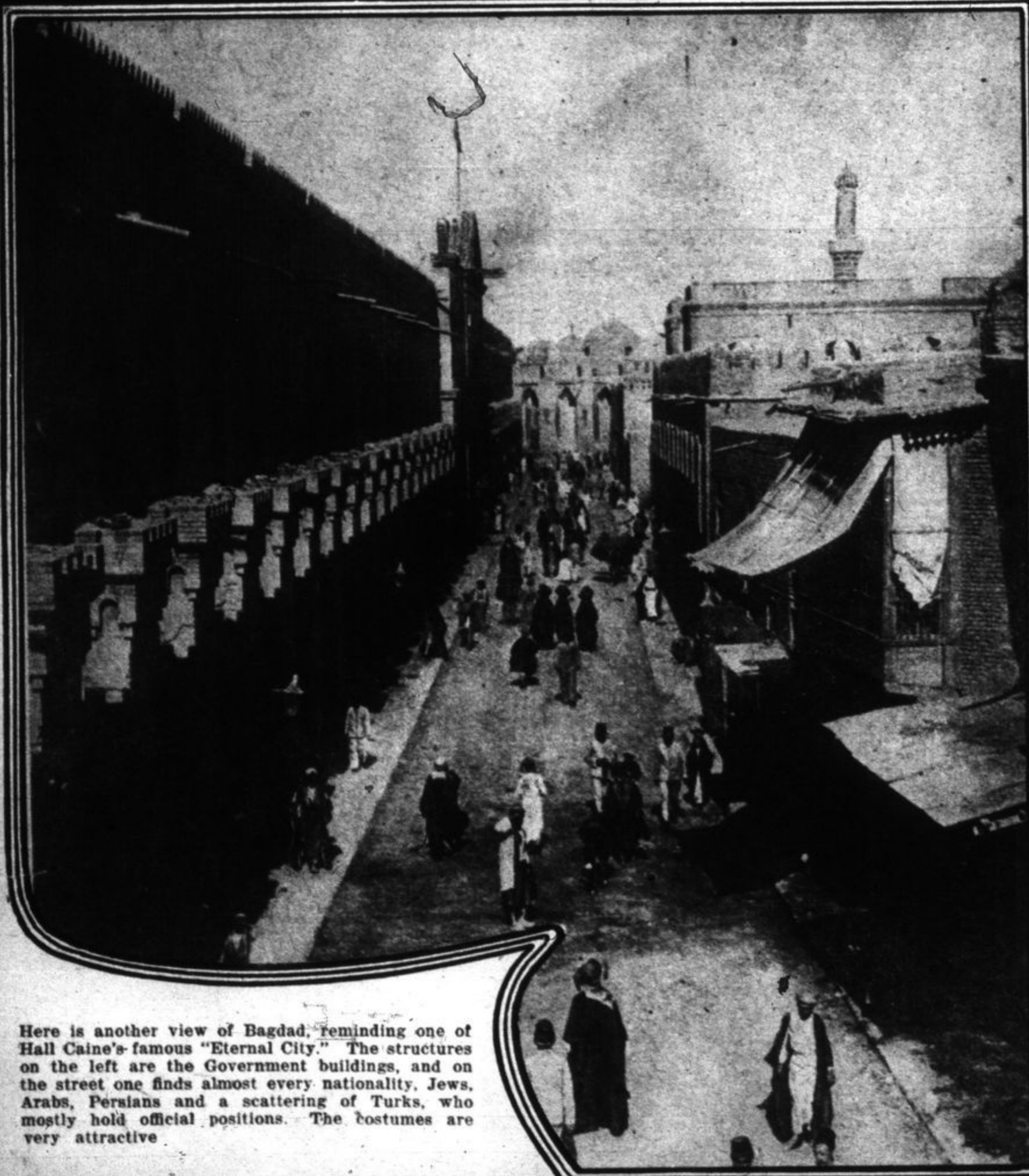


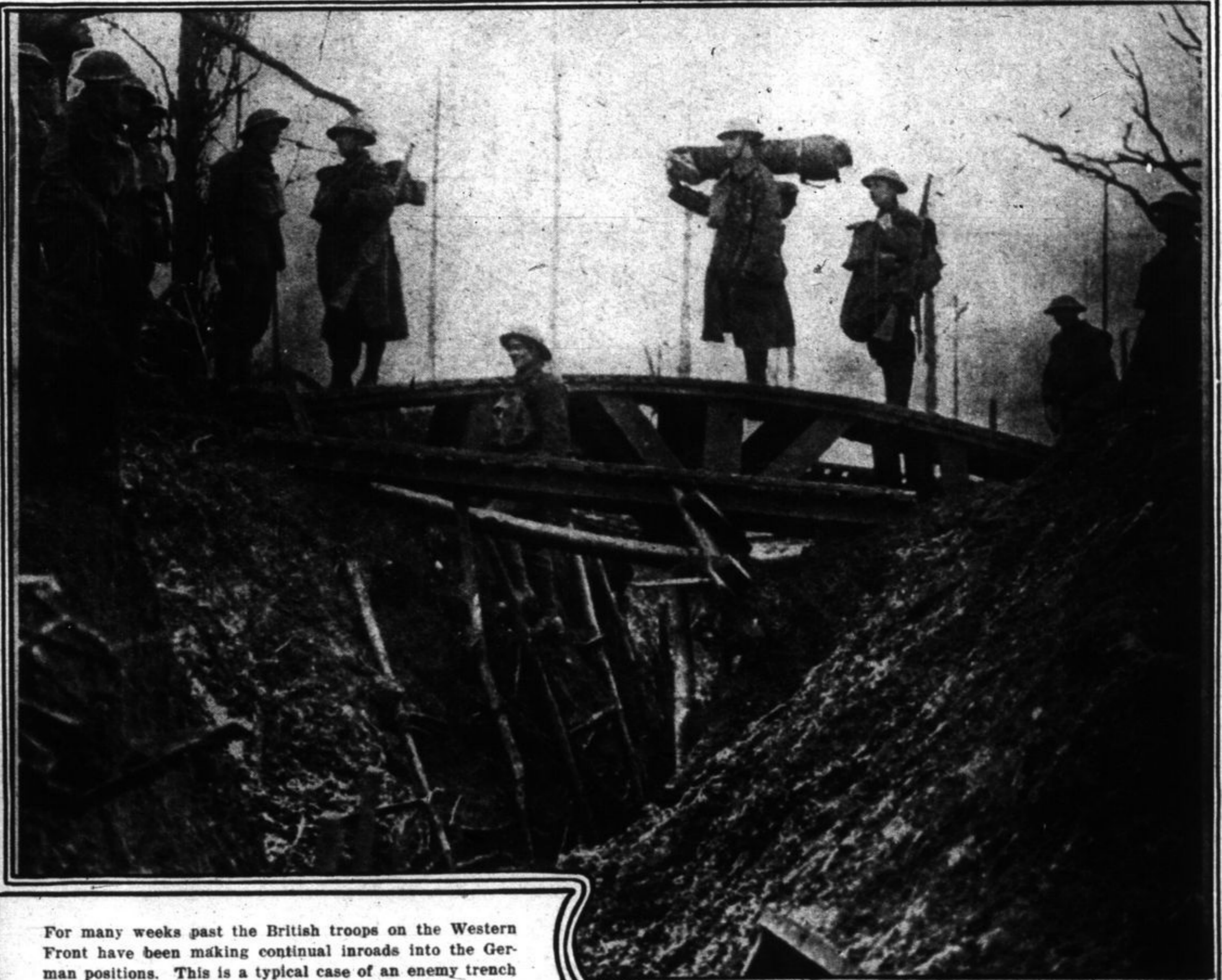
A Peep Into Bagdad - "The Enemy Trenches Were Entered by Our Patrols"



THE FALL OF BAGDAD—The country through which General Sir Stanley Maude has advanced has been cleared of Turkish troops and no trouble is expected with the Arabs. The sentry is guarding a point near the Tigris, for, owing to geographical reasons, the army must keep in touch with the great river. (To the left.) Since Bagdad has again come into the limelight a great many photographs are arriving from there giving one a good idea of the city. Here is one of the waterfront showing modern shipping in the background and very ancient craft in the front.
A picturesque side of a bombardment, showing through the destroyed masonry the beginning of a French trench at Pontavert. (To the right.)



Here is another view of Bagdad, reminding one of Hall Caine's famous "Eternal City." The structures on the left are the Government buildings, and on the street one finds almost every nationality, Jews, Arabs, Persians and a scattering of Turks, who mostly hold official positions. The costumes are very attractive.



For many weeks past the British troops on the Western Front have been making continual inroads into the German positions. This is a typical case of an enemy trench captured in a raid during the night, northeast of Bouchavesnes. A few prisoners were captured. The above photograph shows specially constructed bridges used for crossing trenches.



This is a picture from the front held by the Australians, depicting them showing an artillery wagon and stores on trolleys, using a front line light railway track.



The work of the Royal Flying Corps. An incident of "aerial activity" on the British front. Dismantling a German machine which was forced to land behind our lines.