



Oranges—eaten every day—will help you stay well. Order Sunkist now and keep a supply of these uniformly good oranges in the house always.

**Sunkist**  
Uniformly Good  
Oranges  
California Fruit Growers Exchange

Don't think because a girl loves you from the bottom of her heart that there isn't plenty of room at the top. He who has his eyes perpetually on the ground doesn't see the sun and the other beauties of the sky.

# CROWN LIFE

Our aim is to insure the Right People—in the Right Way—on the Right Policy. We do not "over-load" the Applicant. This is part of Crown Life Service and is one Factor in our rapidly growing business.

**CROWN LIFE INSURANCE CO., TORONTO**  
Agents wanted in unrepresented districts

## One Quart of Milk

is equal in food value to three-fourths of a pound of Beef Steak, eight eggs, fifteen pounds of oysters, two pounds of fish, six pounds of tomatoes. And the milk is more easily digested and far more economical than any of the other foods.

**Phone 845 - Price's**

## In time of need

Every woman should know the comfort, and experience the relief of a reliable remedy that can be depended upon to right conditions which cause headache, dizziness, languor, nausea and constipation. At such times, nothing is so safe, so sure and speedy as

# BEECHAM'S PILLS

During the past sixty years, millions of women have found them most helpful in toning and strengthening the system, and for regulating the stomach, liver and bowels. These famous pills are entirely vegetable and contain no harmful or habit-forming drugs. Use them with entire confidence for they cause no unpleasant after-effects, and

**will not fail you**

Worth a Guinea a Box  
Prepared only by Thomas Beecham, St. Helens, Lancashire, England.  
Sold everywhere in Canada and U. S. America. In boxes, 25 cents.

## The Latest Market Reports

### LIVE STOCK MARKETS.

**Toronto.**  
Toronto, April 17.—Heavy steers, \$11.25 to \$12.25; choice steers, \$11 to \$11.50; do good, \$10 to \$10.50; do, medium, \$9.50 to \$9.50; do, common, \$7 to \$9.50; heifers, good to choice, \$10 to \$10.50; do, medium, \$7 to \$7.50; butcher cows, choice, \$8 to \$10.50; do, medium, \$7 to \$7.50; butcher bulls, choice, \$8.25 to \$10.50; do, good, \$7 to \$7.25; do, medium, \$6 to \$6.50; feeders, 500 to 1,000 lbs., \$8.50 to \$9.50; do, bulls, \$6.25 to \$6.50; stockers, 700 to 800 lbs., \$8 to \$8.50; do, med., 650 to 750 lbs., \$7.25 to \$7.50; do, light, 600 to 650 lbs., \$7 to \$7.25; canners, \$5 to \$5.25; cutters, \$5.50 to \$7.75; sheep light, \$10.25 to \$11.25; do, heavy, \$8.50 to \$9.50; calves, \$8 to \$15.50; spring lambs, \$13 to \$15.50; cull lambs, 3 to 12; hogs, fed and watered, \$16.75; do, weighed off cars, \$10.90; do, f.o.b., \$15.90.

**Montreal.**  
Montreal, April 17.—Choice steers, \$12; good, \$11; medium, \$10 to \$10.50; choice cows, \$10.50; good, \$9.50 to \$10; medium, \$8.50 to \$9; choice bulls, \$11 to \$11.50; good, \$10 to \$10.50; medium, \$9 to \$10; canners, bulls, \$6.50; canners, cows

\$6; hogs, choicest, select, \$17.50; good select, \$16.75 to \$17.  
Offerings at the Canadian Pacific Cattle Market this morning were 275 cattle, 15 sheep and lambs, 302 hogs and 650 calves.

**Chicago.**  
Chicago, April 17.—Cattle—Receipts 19,000; market weak; native beef cattle, \$9.25 to \$13.25; stockers and feeders, \$7.25 to \$10; cows and heifers, \$5.70 to \$10.30; calves, \$9 to \$13.25.  
Hogs—Receipts 36,000; market slow; lower; light, \$15.30 to \$16.10; mixed, \$15.60 to \$16.30; heavy, \$15.55 to \$16.35; rough, \$15.15 to \$15.75; pigs, \$11.50 to \$14.50; bulk of sales, \$15.80 to \$16.20.  
Sheep and lambs—Receipts 19,000; market weak; wethers, \$10.65 to \$13; lambs, native, \$12.10 to \$15.90.

**Buffalo.**  
Buffalo, N.Y., April 17.—Cattle—Receipts, 3,200; slow to steady; shipping steers, \$9.50 to \$13.25; butchers, \$8 to \$11.75; heifers, \$7 to \$11; cows, \$5.75 to \$10; bulls, \$6 to \$10; stockers and feeders, \$7 to \$8.75; fresh cows and springers, steady, \$50 to \$115.  
Veals—Receipts, 2,200; active and lower, \$7 to \$14.50.  
Hogs—Receipts, 9,000; slow and lower; \$16.40 to \$16.50; mixed, \$16.35 to \$16.40; Yorkers, \$16.25 to \$16.35; light Yorkers, \$14.50 to \$16; pigs, \$13.50, to \$14.25; roughs, \$14.25 to \$14.50; stags, \$11.50 to \$12.50.  
Sheep and lambs—Receipts, 6,000; active, steady; lambs, \$13 to \$18.75; yearlings, \$9.50 to \$12.25; wethers, \$11.75 to \$12; ewes, \$5.50 to \$11.50; mixed sheep, \$11.50 to \$11.75; clipped lambs, \$10 to \$14.

**GRAIN QUOTATIONS**  
**Toronto**  
Toronto, April 17.—Manitoba wheat—No. 1 northern, \$2.59; No. 2, \$2.45 1/2; No. 4, \$2.30; track, bay ports.  
Manitoba oats—No. 2 C.W., \$2; No. 3, 80 3/4c; extra No. 1 feed, 80 3/4c; No. 1 feed, 79c; all rail delivered.  
American corn—\$1.53 1/2 nominal, subject to export.  
Ontario oats—No. 2, white, 74c to 76c; No. 3, white, 73c to 75c.  
Ontario wheat—No. 2 winter, per car lot, \$2.20 to \$2.22; No. 3, \$2.18 to \$2.20; according to freights outside.  
Peas—No. 2, nominal; car lots, nominal.  
Barley—Good malting, \$1.35 to \$1.37; feed barley, nominal.  
Buckwheat—Nominal.  
Rye—No. 2, \$1.78 to \$1.80.  
Manitoba flour—First patents, in jute bags, \$11.40; second patents, \$10.90; strong bakers, \$10.50.  
Ontario flour—Winter, according to sample, \$9.40 to \$9.50; track, Toronto, prompt shipments.  
Millfeed—Car lots, delivered.  
Montreal, shorts, \$40 to \$42; bran, \$38; feed flour, per bag, \$2.80; middlings, \$43 to \$45.  
Hay—Baled, track, Toronto, car lots, No. 2, \$11.50 to \$12.50; mixed, \$9 to \$11; straw, \$7 to \$7.50.

**Winnipeg.**  
Winnipeg, April 17.—Wheat—No. 1 Northern, \$2.29 1/2; No. 2 do., \$2.24 1/2; No. 3 do., \$2.19 1/2; No. 4, \$2.09 1/2; No. 5, \$1.90 1/2; No. 6, \$1.58 1/2; feed, \$1.16 1/2. Oats—No. 2, C.W., 71 1/2c; No. 3 do., 70 1/2c; extra No. 1 feed, 70 1/2c; No. 1 feed, 68 1/2c; No. 2 do., 67 1/2c. Barley—No. 3, \$1.71 1/2; No. 4, \$1.69; rejected, 95c; feed, 95c. Flax—No. 1 N.W.C., \$2.99; No. 2 C.W., \$2.95.

**Chicago.**  
Chicago, April 17.—Wheat—No. 2 red, No. 3 red and No. 2 hard, nominal; No. 3 hard, \$2.45. Corn—No. 2 yellow, \$1.48 1/2 to \$1.50 1/2; No. 4 yellow, \$1.47 1/2 to \$1.48 1/2. Oats—No. 3 white, 69 1/2c to 71c; standard, 70 1/2c to 71 1/2c. Rye—No. 2, \$1.91. Barley—\$1.20 to \$1.51. Timothy—\$4.75 to \$5.75.

**Minneapolis.**  
Minneapolis, April 17.—Wheat—May, \$2.28 1/2; July, \$2.19 1/2; cash No. 1 hard, \$2.50 1/2 to \$2.53 1/2; No. 1 Northern, \$2.44 1/2 to \$2.46 1/2; No. 2 Northern, \$2.38 1/2 to \$2.46 1/2. Corn—No. 2 yellow, \$1.44 1/2 to \$1.45 1/2. Oats—No. 3 white, 68 1/2c to 69 1/2c. Flour—Fancy patents, \$12.00; first clears, \$10.50. Bran, \$38.50 to \$39.00.

**GENERAL TRADE.**  
**Toronto.**  
Toronto, April 17.—Butter, choice, dairy, 42c to 45c; eggs, new-laid, doz., 40c to 45c; cheese, lb., 30c; do fancy, lb., 35c; turkeys, lb., 23c to 35c; fowl, lb., 23c to 27c; ducklings, lb., 20c to 25c; chickens, lb., 30c to 32c; apples, Baldwins, bbl., \$4 to \$6; do, Spies, bbl., \$3 to \$5; do, 6-c, Greenings, bbl., \$3 to \$5; do, 6-c, hkt., 50c to 75c; do, 11-qt. bkt., 50c to 75c; rhubarb, bunch, 10c to 12 1/2c; beets, per bag, \$2.50; do, per peck, 50c to 60c; carrots, per bag, \$2.25 to \$2.50; cauliflower, each, 20c to 25c; cabbages, each, 10c to 40c; onions, bundle, 5c to 10c; do, 11-qt. bkt., \$1.50; do, bag, \$3 to \$4; potatoes, per bag, \$3 to \$3.50; do, Irish cobbler, per bag, \$4; do, per peck, 60c to 75c; turnips, bag, 90c to \$1; do, per peck, 25c.

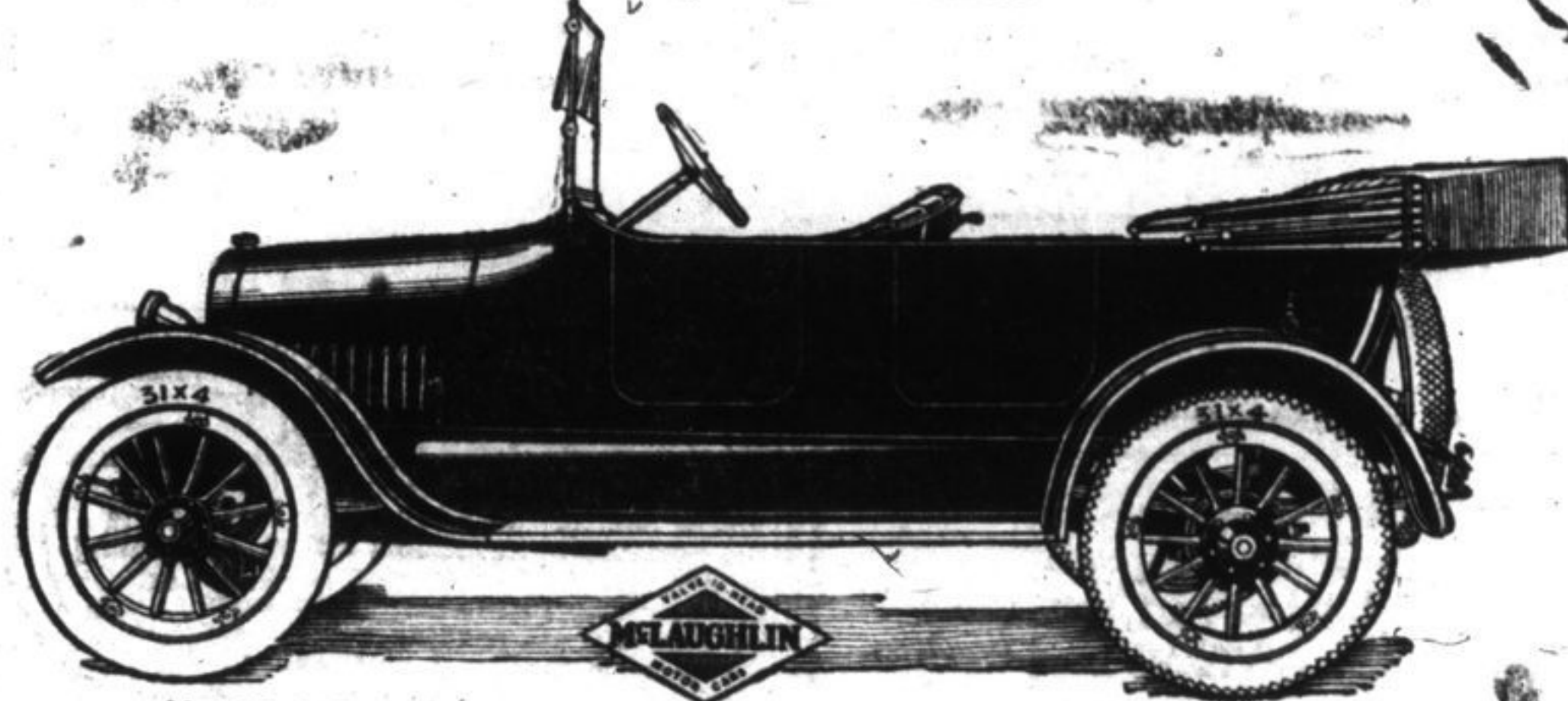
**Montreal.**  
Montreal, April 17.—Cheese—Finest western, 24 to 24 1/2c; do, cast-erna, 23 1/2 to 24c. Butter—Choicest creamery, 42 to 43c; seconds, 38 to 40c. Eggs—Fresh, 36c; selected, 35c. Potatoes, per bag, carrots, \$3.25 to \$3.50. Dressed hogs, abattoir, killed, \$23.50 to \$24. Pork—Heavy Canada, short mess, bbls., 56 to 45 pieces, \$45 to \$46; short cut back, bbls., 45 to 55 pieces, \$43 to \$44. Lard—Compound, wood pallets, 20 lbs. net, 22 1/2c; pure, wood pallets, 20 lbs. net, 24 1/2 to 25c.

# RESERVE POWER

THE McLaughlin valve-in-head motor actually develops from 15% to 20% more power with the same fuel consumption than any other type of motor of the same bore and stroke. This fact has been established by engineers, by block tests and tests in actual service. This means fuel economy and power.

Because this power is sometimes vital, it is found in abundance in McLaughlin Motor Cars, ready for instant application. It is "RESERVE POWER" and marks the dependable and efficient car.

Send for Catalogue "B," describing our complete line, to  
**The McLAUGHLIN MOTOR CAR CO., Limited,**  
OSHAWA, ONTARIO



Model D-4-35 is a new Four Cylinder Touring Car—the challenge in 1917 Motor Car values—106 in. wheelbase; 35 H. P. valve-in-head motor; Delco starting, lighting and ignition.

**\$910.00** f. o. b. Oshawa. Spare tire extra.  
The New Series McLaughlin cars include 4 and 6 cylinder models in Touring, Roadster and Sedan types, and at prices ranging from \$895 to \$2350, and a new 60 H. P. 6 cylinder, 7 passenger Touring car at \$1900.

See the McLaughlin Models at the nearest McLaughlin Show Rooms  
BRANCHES IN LEADING CITIES, DEALERS EVERYWHERE  
LOCAL SHOW ROOMS

**W. G. ROBINSON, KINGSTON.**

Canada's Standard Car

## "We Aim to Have the Best"

and generally "hit the mark." Season nearly over for cream goods. Will have this week: Charlotte Russe, 4 for 25c. 70c per dozen. Cream Puffs, 40c dozen. Large assortment of cakes, buns and etc. Expect to have Saturday: Sweet Potatoes, Asparagus and cucumbers.

**P. H. Baker & Co.**  
Phone 141 302 King St.

## City Dairy

Season nearly over for cream goods. Will have this week: Charlotte Russe, 4 for 25c. 70c per dozen. Cream Puffs, 40c dozen. Large assortment of cakes, buns and etc. Expect to have Saturday: Sweet Potatoes, Asparagus and cucumbers.

**P. H. Baker & Co.**  
Phone 141 302 King St.

PASTEURIZED MILK AND CREAM. Visit This Dairy and Decide for Yourself. — Satisfaction Guaranteed.  
**24 Johnson Street**  
Phone 2083

## GRAND TRUNK RAILWAY SYSTEM LOCAL BRANCH TIME TABLE

In effect Jan. 14th, 1917.  
Trains will leave and arrive at City Depot, foot of Johnson Street.  
GOING WEST  
No. 19 Mail ... 12:20 a.m. 12:57 a.m.  
No. 18 Express ... 1:25 a.m. 2:15 a.m.  
No. 27 Local ... 6:10 a.m. 7:15 a.m.  
No. 1 Intern'l. Ltd. ... 7:45 p.m. 8:12 p.m.  
No. 7 Mail ... 8:05 p.m. 8:40 p.m.  
GOING EAST  
No. 18 Mail ... 1:40 a.m. 2:15 a.m.  
No. 16 Express ... 2:58 a.m. 3:35 a.m.  
No. 4 Mail ... 12:30 p.m. 12:52 p.m.  
No. 14 Intern'l. Ltd. ... 1:05 p.m. 1:35 p.m.  
No. 28 Local ... 6:45 p.m. 7:25 p.m.  
Nov. 1, 4, 7, 10, 13, 16, 19 run daily.  
Other trains daily except Sunday.  
Direct route to Toronto, Peterboro, Hamilton, Buffalo, London, Detroit, Chicago, Bay City, Saginaw, Montreal, Ottawa, Quebec, Portland, St. John, Halifax, Boston and New York.  
For Pullman Accommodation Tickets and all other information apply to  
**J. P. HANLEY, AGENT,**  
Cor. Johnson and Ontario Streets, Kingston, Ont.  
AGENCY FOR ALL OCEAN STEAM-SHIP LINES.  
Open Day and Night Telephone 88

## Western Canada Needs

Thousands of Men for Spring Seeding. Low Fares in Effect. Steady Employment — Good Wages. For tickets and information apply to J. E. Ivey, station agent, or M. C. Dunn, city agent.  
**CANADIAN NORTHERN**

**CUNARD LINE**  
Passenger Service  
Montreal and London  
(Calling Plymouth to land passengers)  
For particulars of sailings and rates apply to local agents or to The Robert Redford Co., Limited, General Agents, 56 King Street East, Toronto.



**Low Fares and Through Tickets**  
To All Points In  
**Western Canada and the Pacific Coast**  
Electric Lighted and Comfortably Equipped Trains.  
To obtain the lowest fare and the most convenient routing apply to M. C. Dunn, City Agent, or J. E. Ivey, Station Agent, or write to R. L. Fairbairn, General Passenger Dept., 68 King St. E., Toronto.  
**VIA CANADIAN NORTHERN**

## WILL YOU SAVE THIS CHILD?



Your own meals will taste better when you know some Belgian babies are enjoying the food for which your contribution pays! Give freely and promptly to the

## BELGIAN RELIEF FUND

59 ST. PETER STREET, MONTREAL.